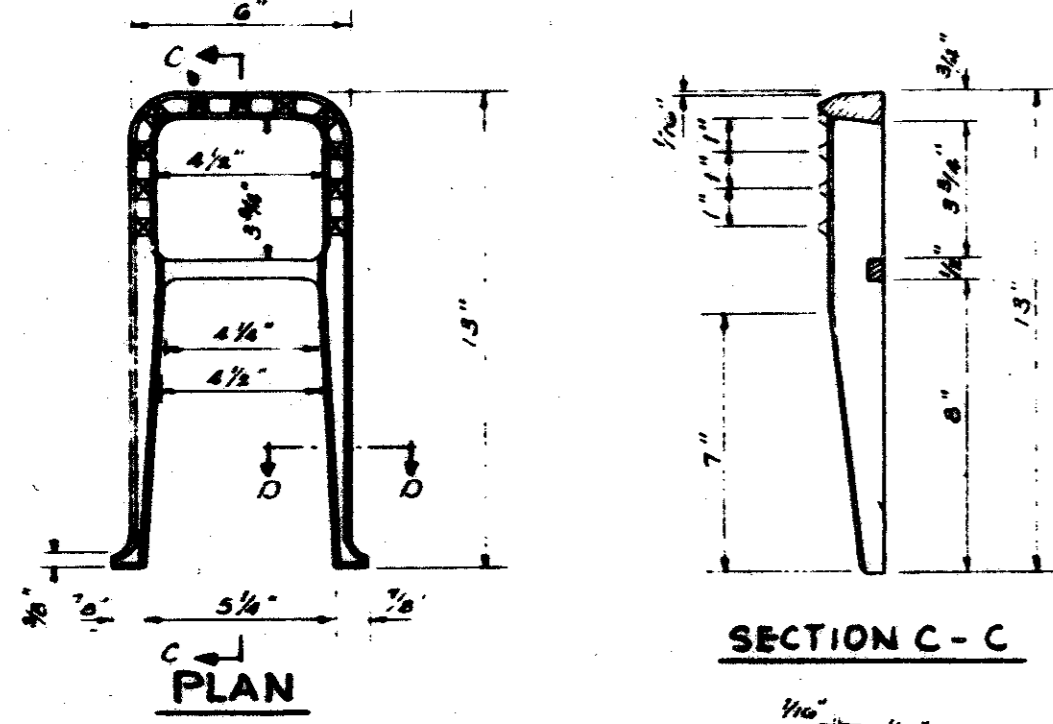
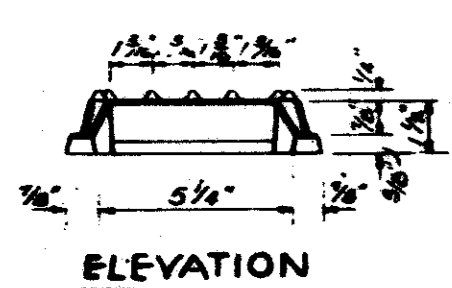


STANDARD WATER TIGHT - SOLID SEAL MANHOLE FRAME AND COVER
TO BE USED ON STANDARD MANHOLE
 As Manufactured by DALLAS FOUNDRY
 NO. 975-2 or approved equal.
 Wgt 410 pounds.



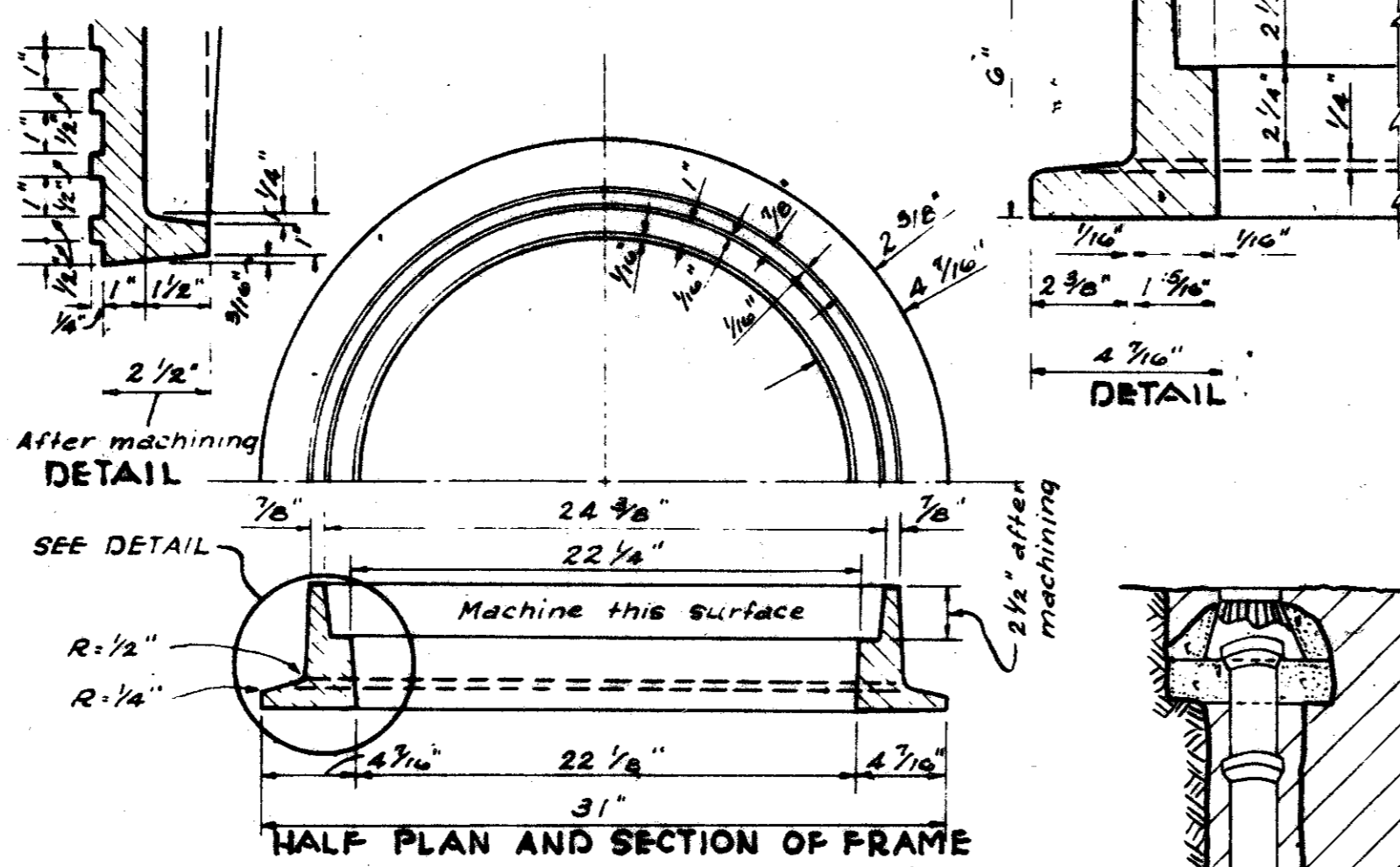
PLAN

SECTION C-C



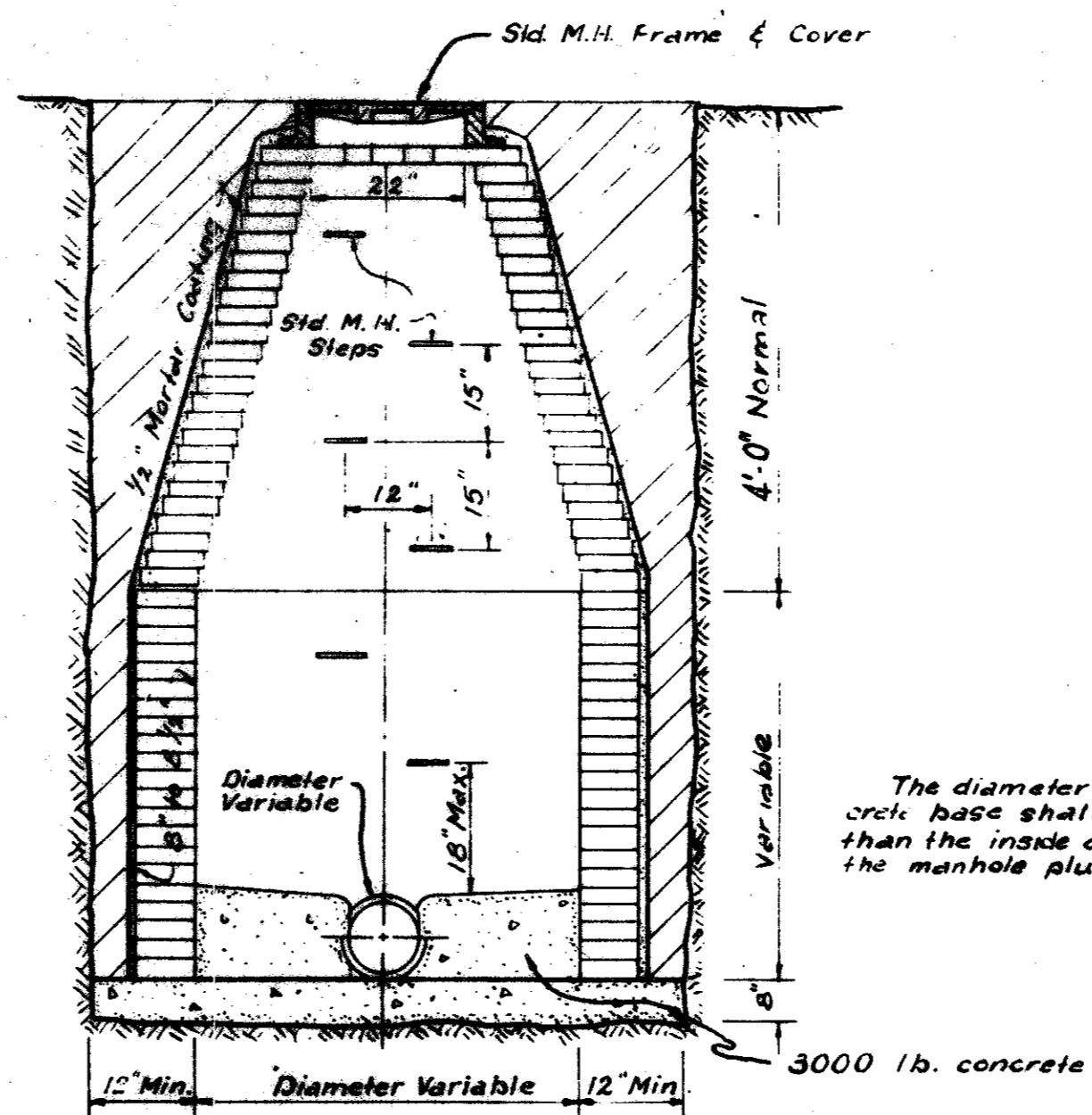
ELEVATION

STANDARD C.I. MANHOLE STEP
 STORM SEWER & SANITARY SEWER

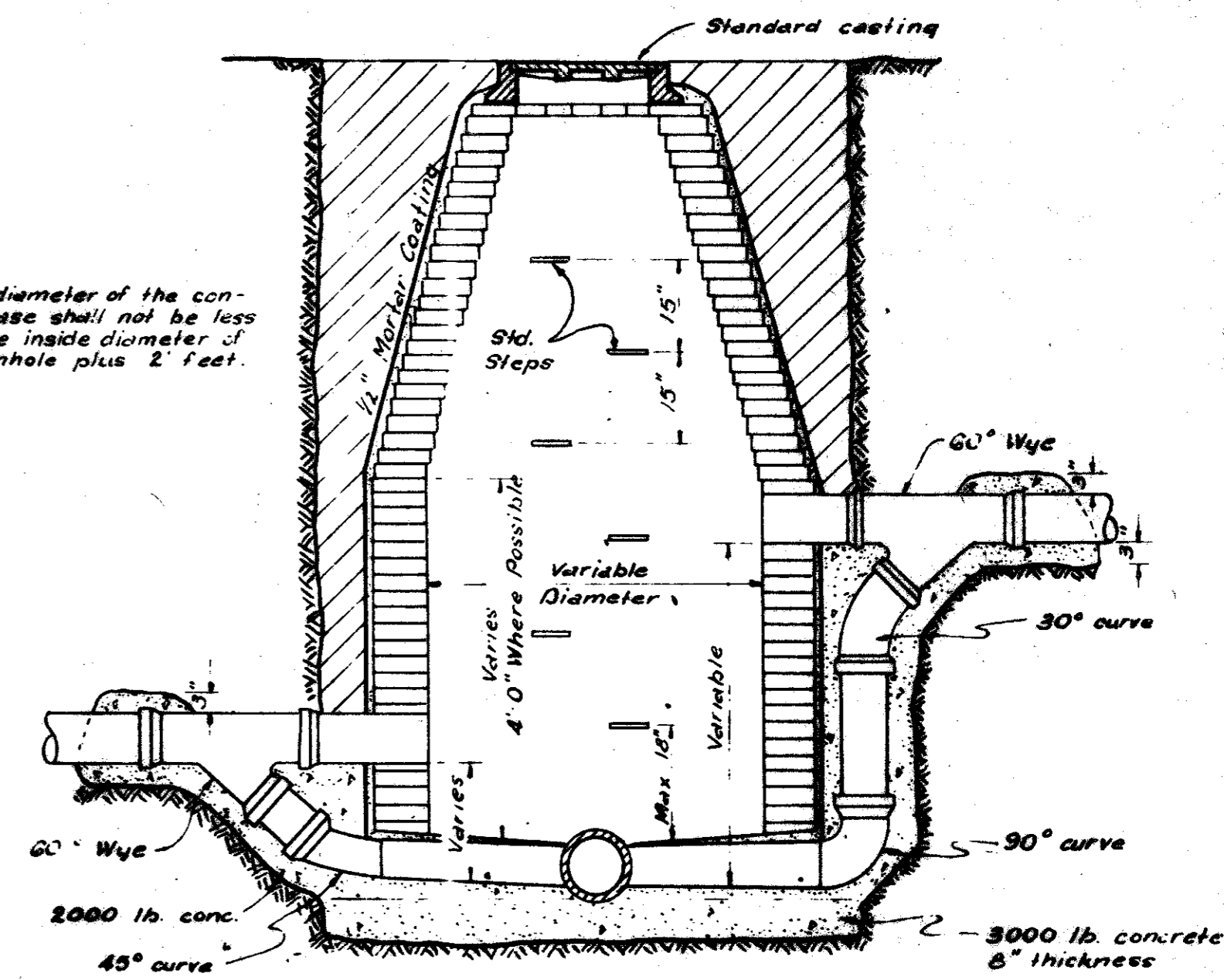


HALF PLAN AND SECTION OF FRAME

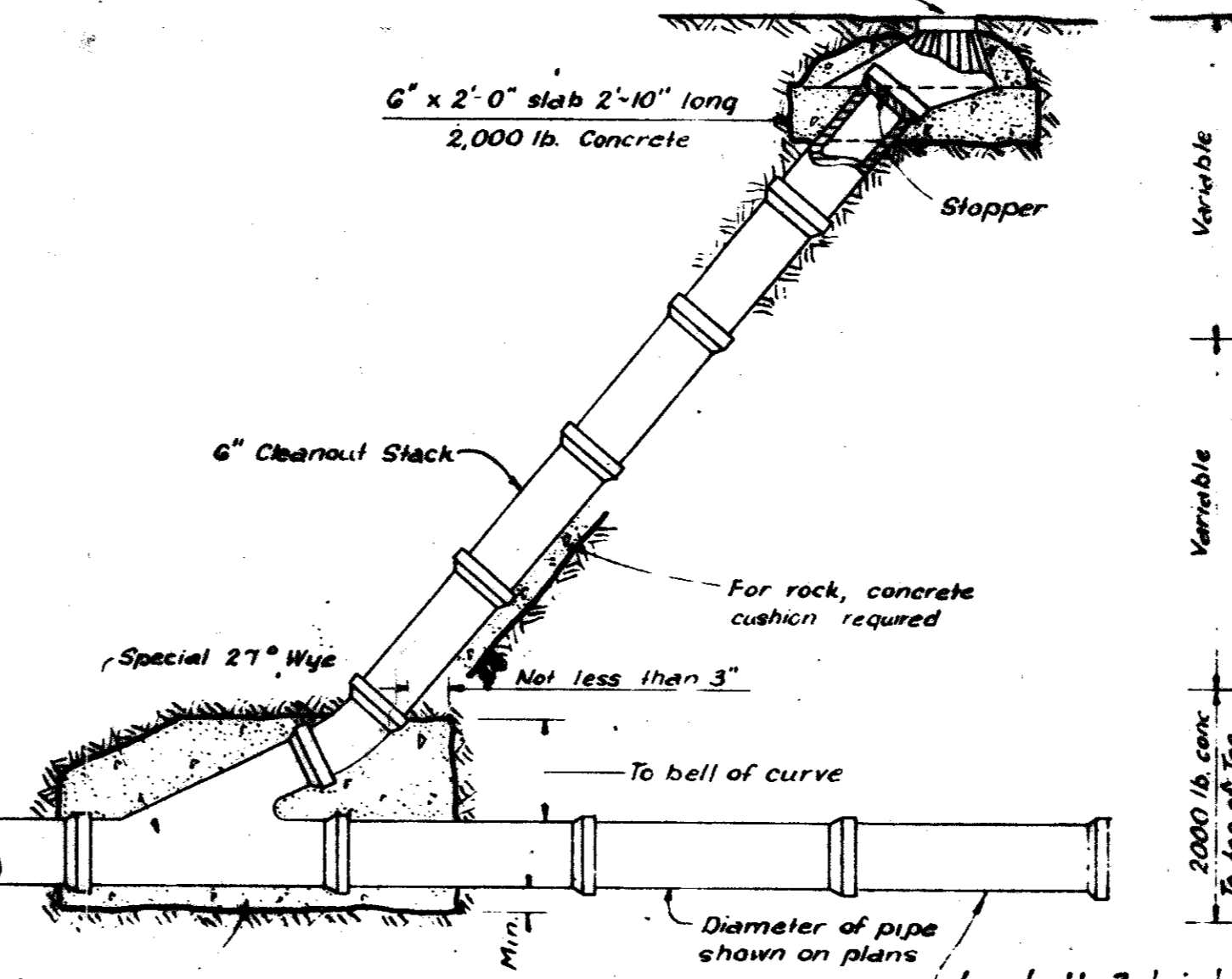
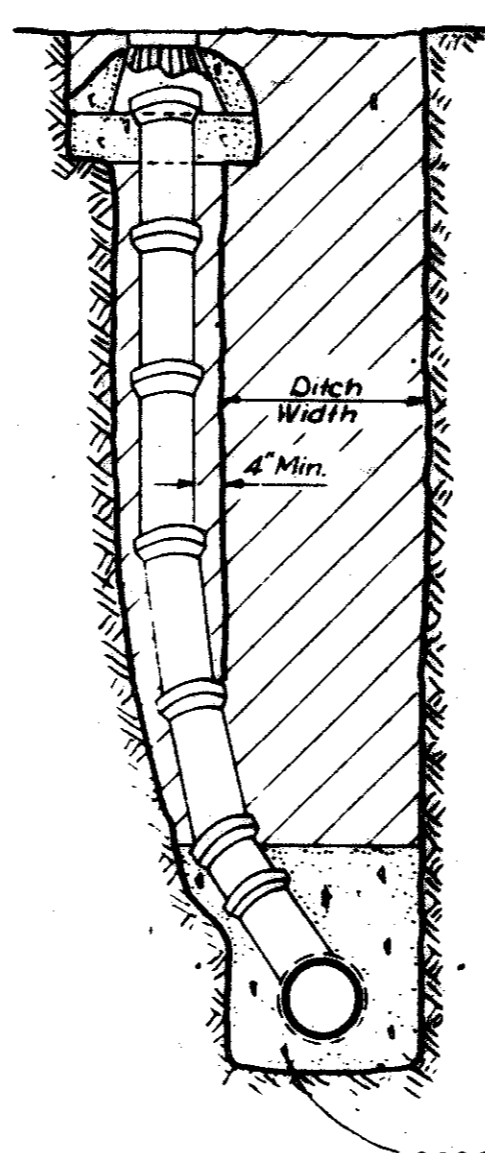
STANDARD C.I. MANHOLE FRAME & COVER
 As Manufactured by DALLAS FOUNDRY NO. 700-8 or
 approved equal. Wgt 400 pounds.



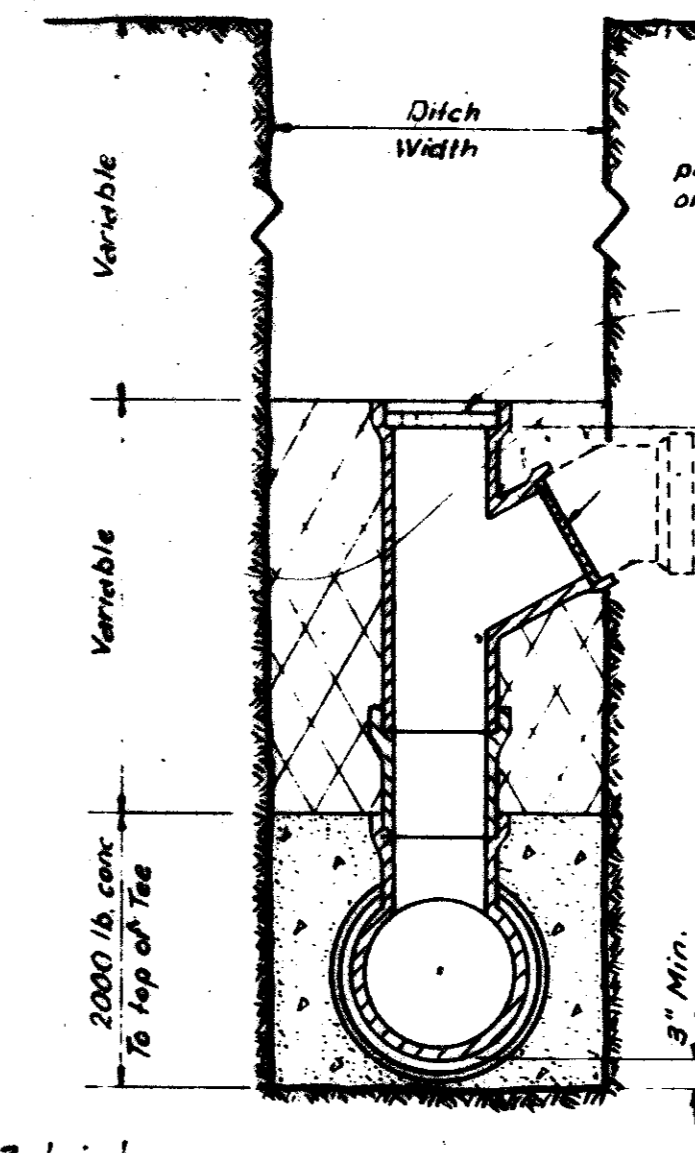
STANDARD MANHOLE



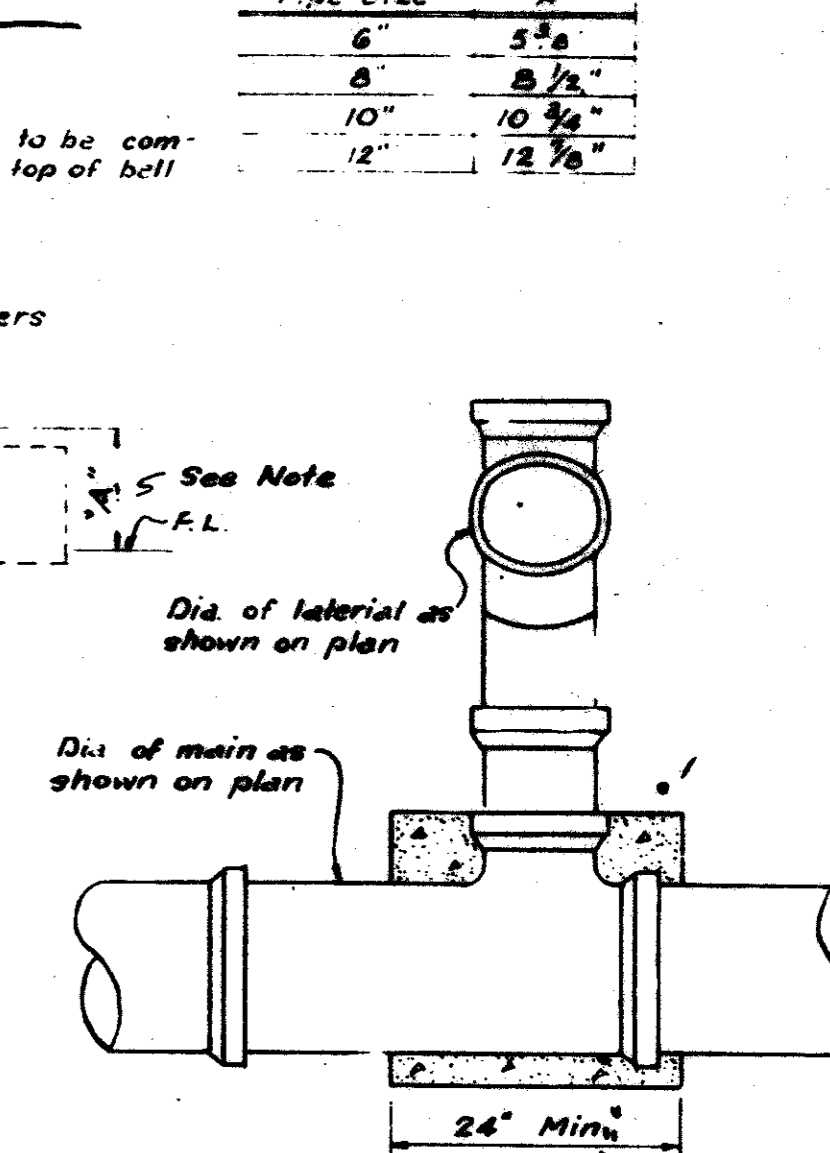
STANDARD DROP CONNECTION MANHOLE



STANDARD CLEANOUT

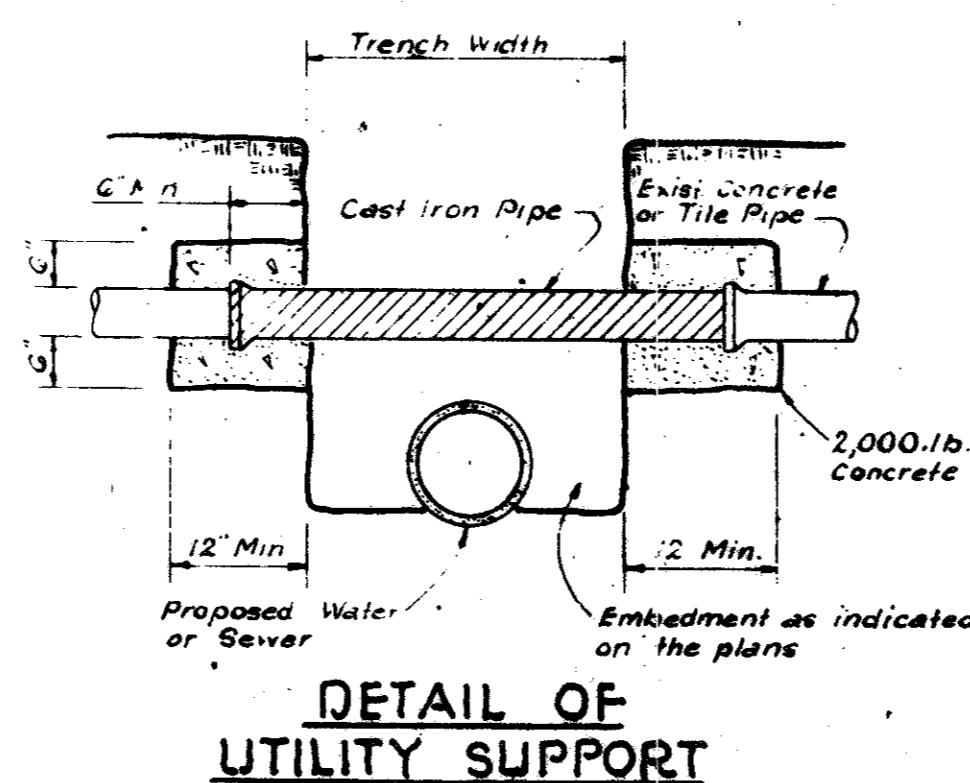


END ELEVATION

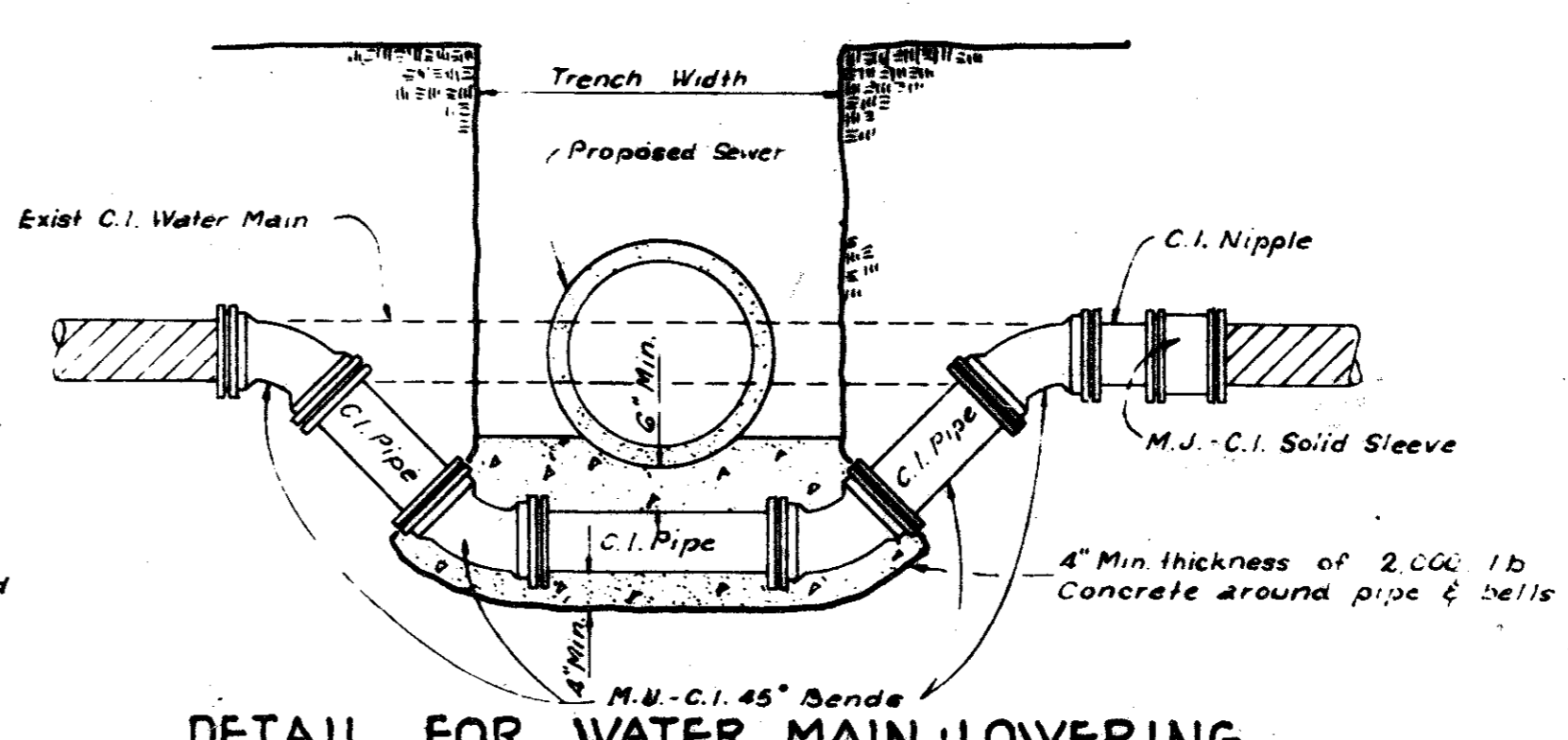


SIDE ELEVATION

DROP CONNECTION



DETAIL OF UTILITY SUPPORT



DETAIL FOR WATER MAIN LOWERING

NOTE

PIPE SIZE	"A"
6"	5 3/4"
8"	8 1/2"
10"	10 3/4"
12"	12 7/8"

REVISED MARCH, 1978 L.E.D.
 REVISED MARCH, 1975 J.H.D.

QUORUM
 SANITARY SEWER DETAILS

Graham Associates, Inc.
 CONSULTING ENGINEERS & PLANNERS

DESIGN	DRAWN	CHECKED	DATE	SCALE	SHEET NO.
REV	RLD	D.P.	3-1-79	NONE	8 OF 22