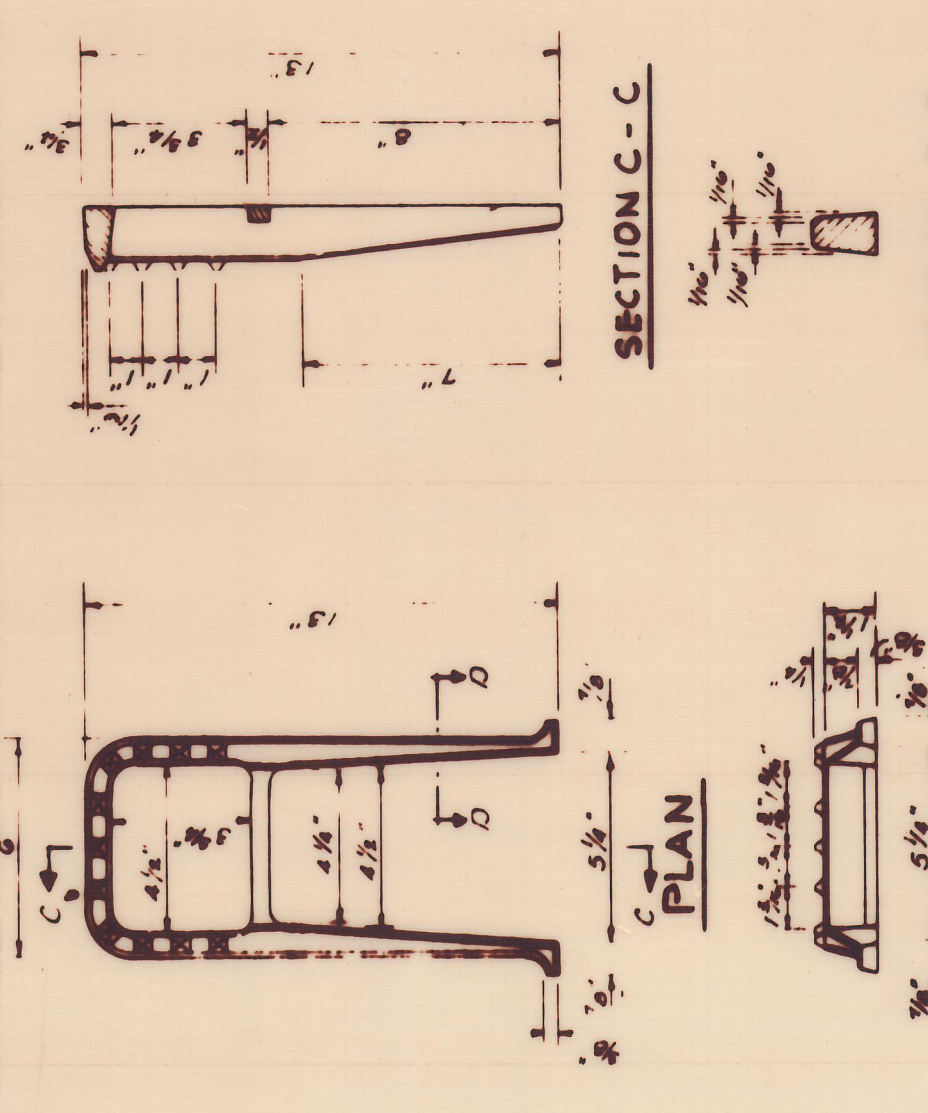
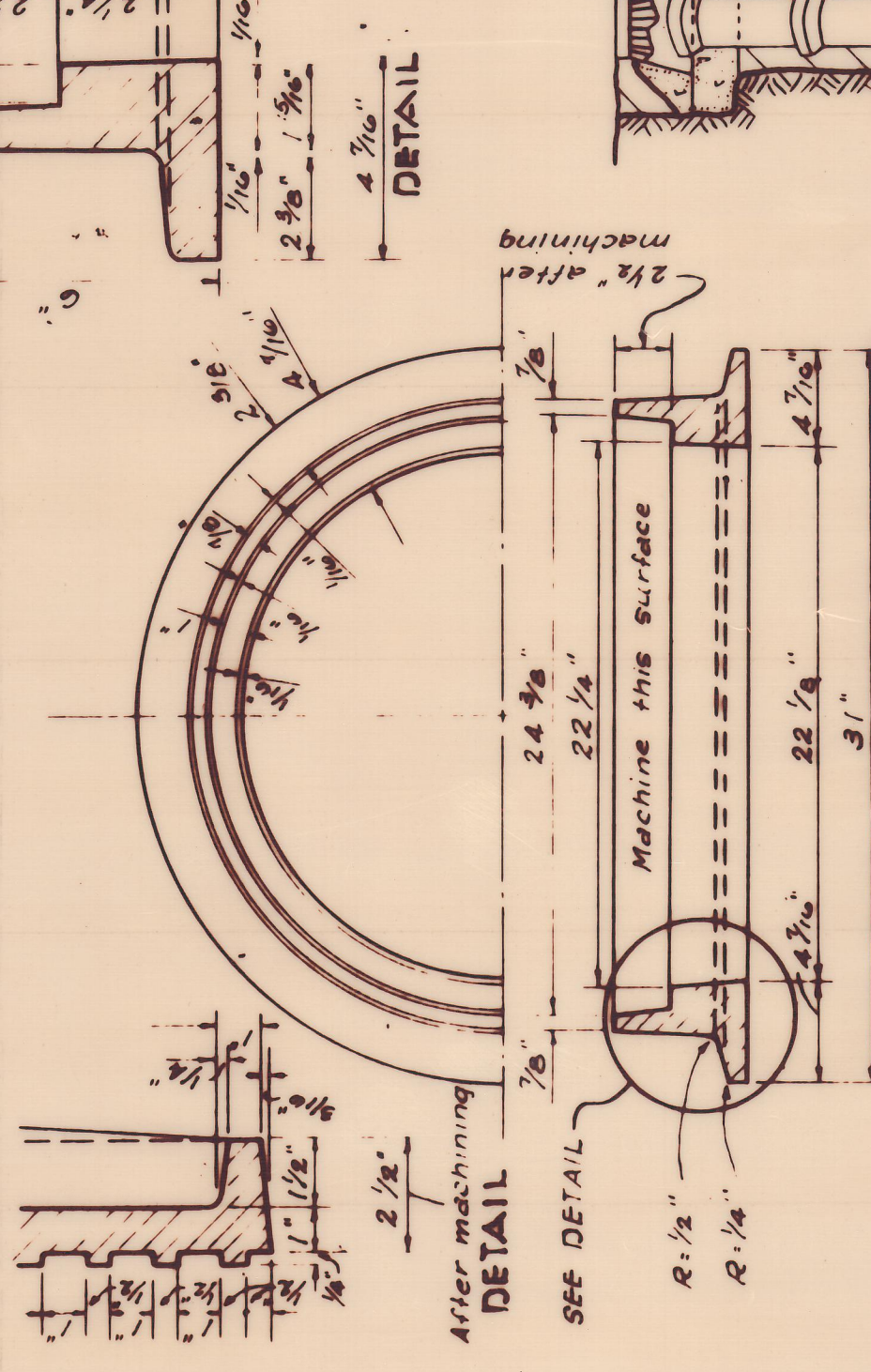
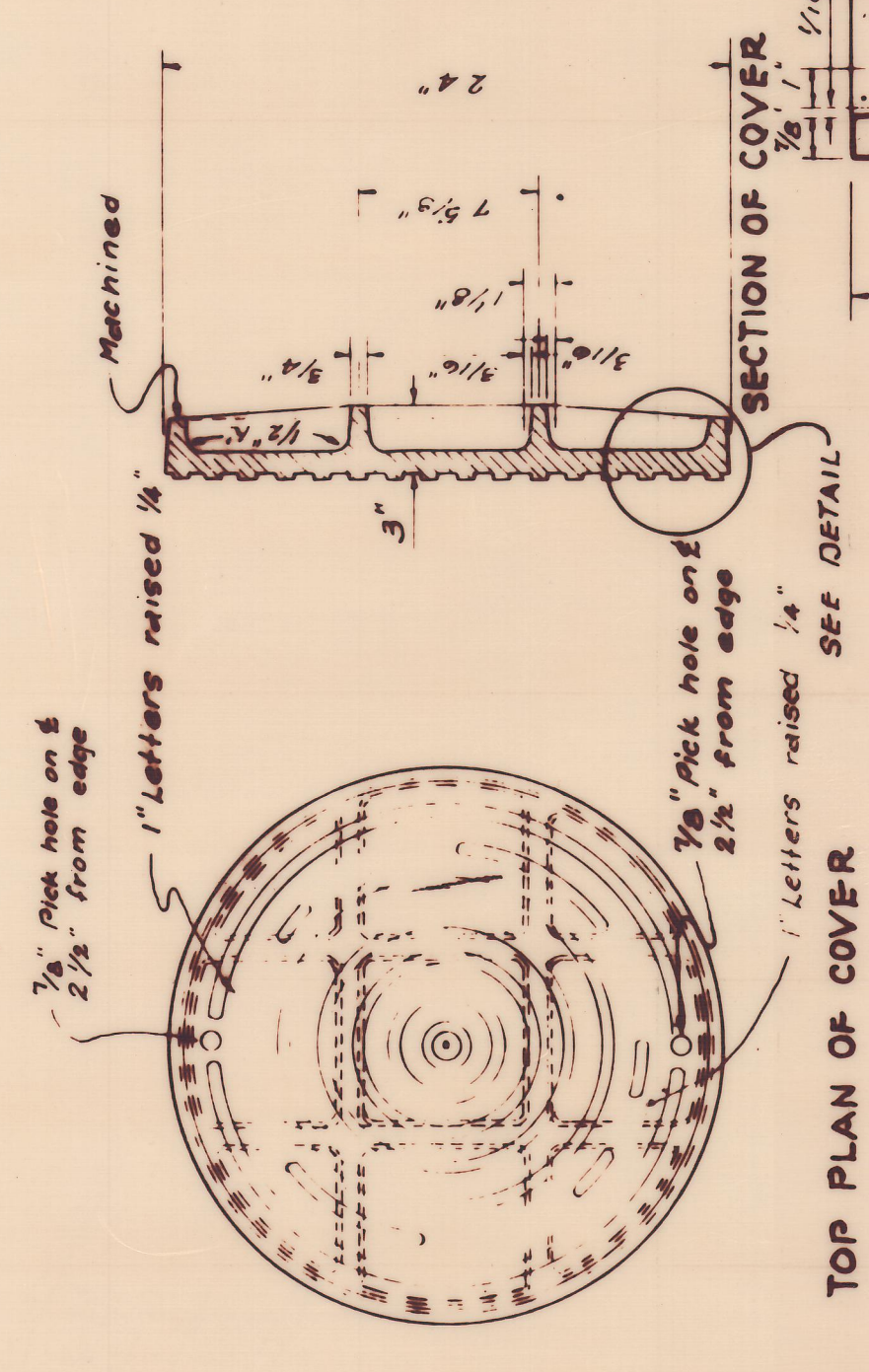


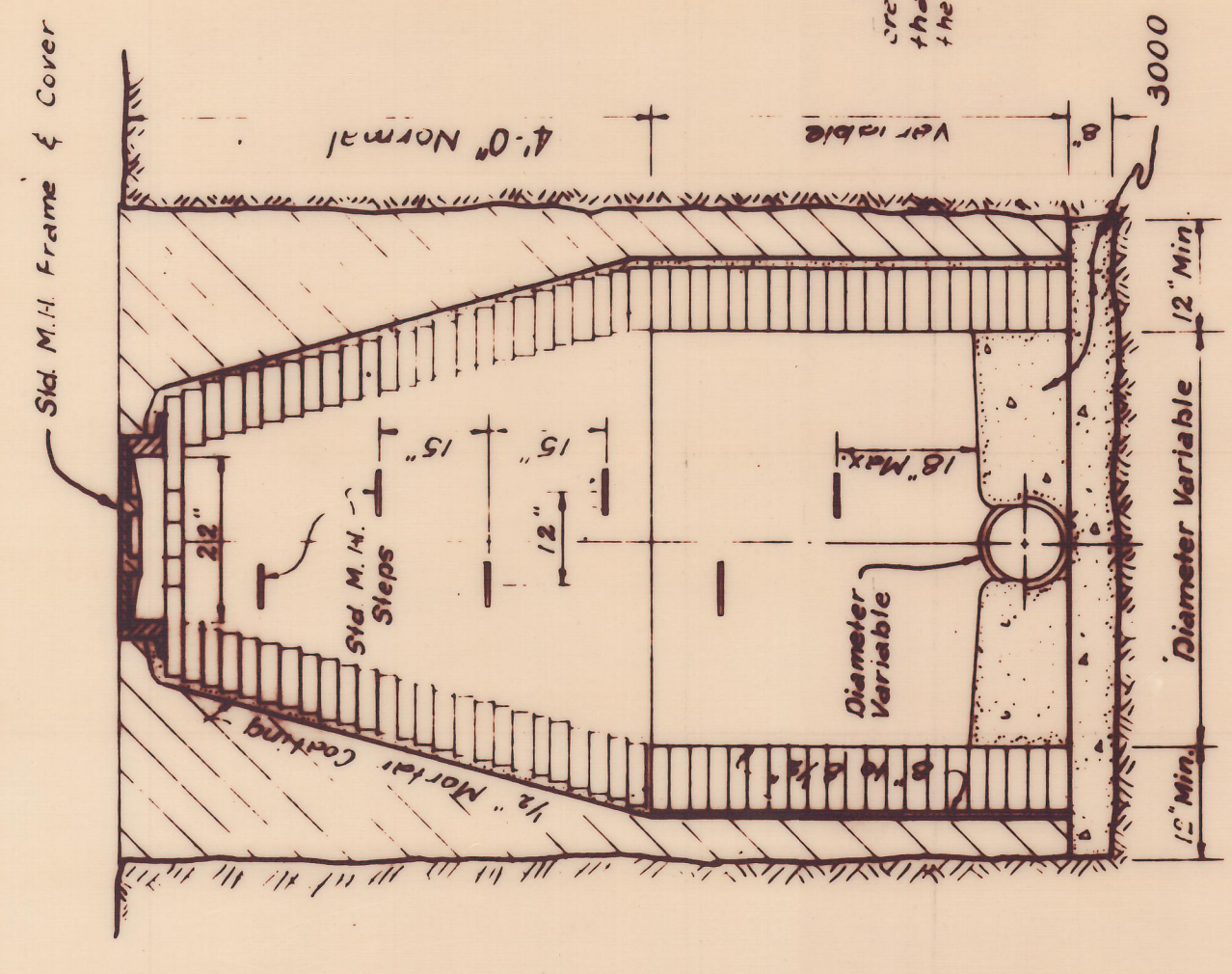
STANDARD WATER TIGHT - SOLID SEAL MANHOLE FRAME AND COVER
 TO BE USED ON STANDARD MANHOLE
 As Manufactured by DALLAS FOUNDRY
 MC 975 - 2 or approved equal
 Wgt. 410 pounds.



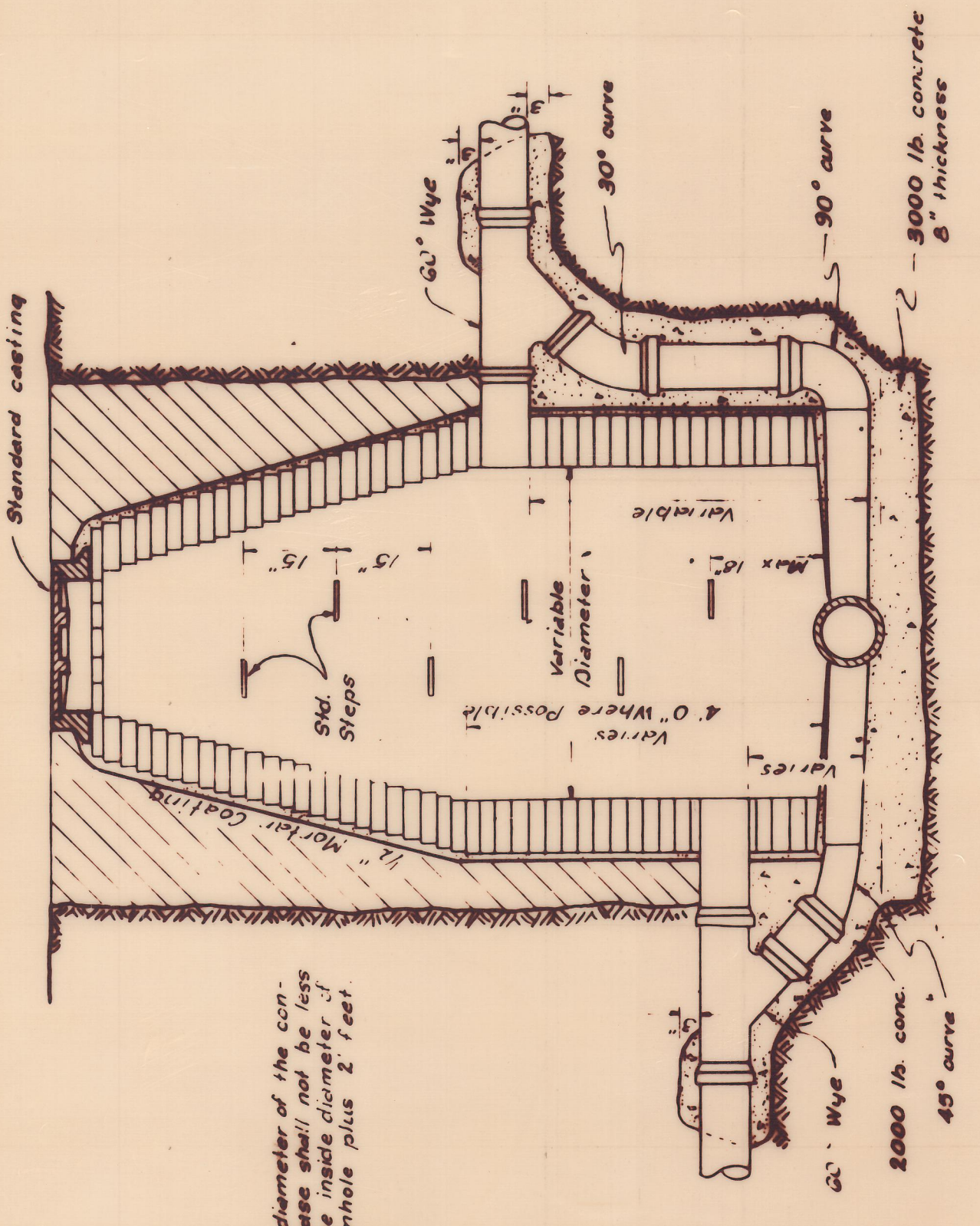
ELEVATION
STANDARD C.I. MANHOLE STEP
 STORM SEWER & SANITARY SEWER



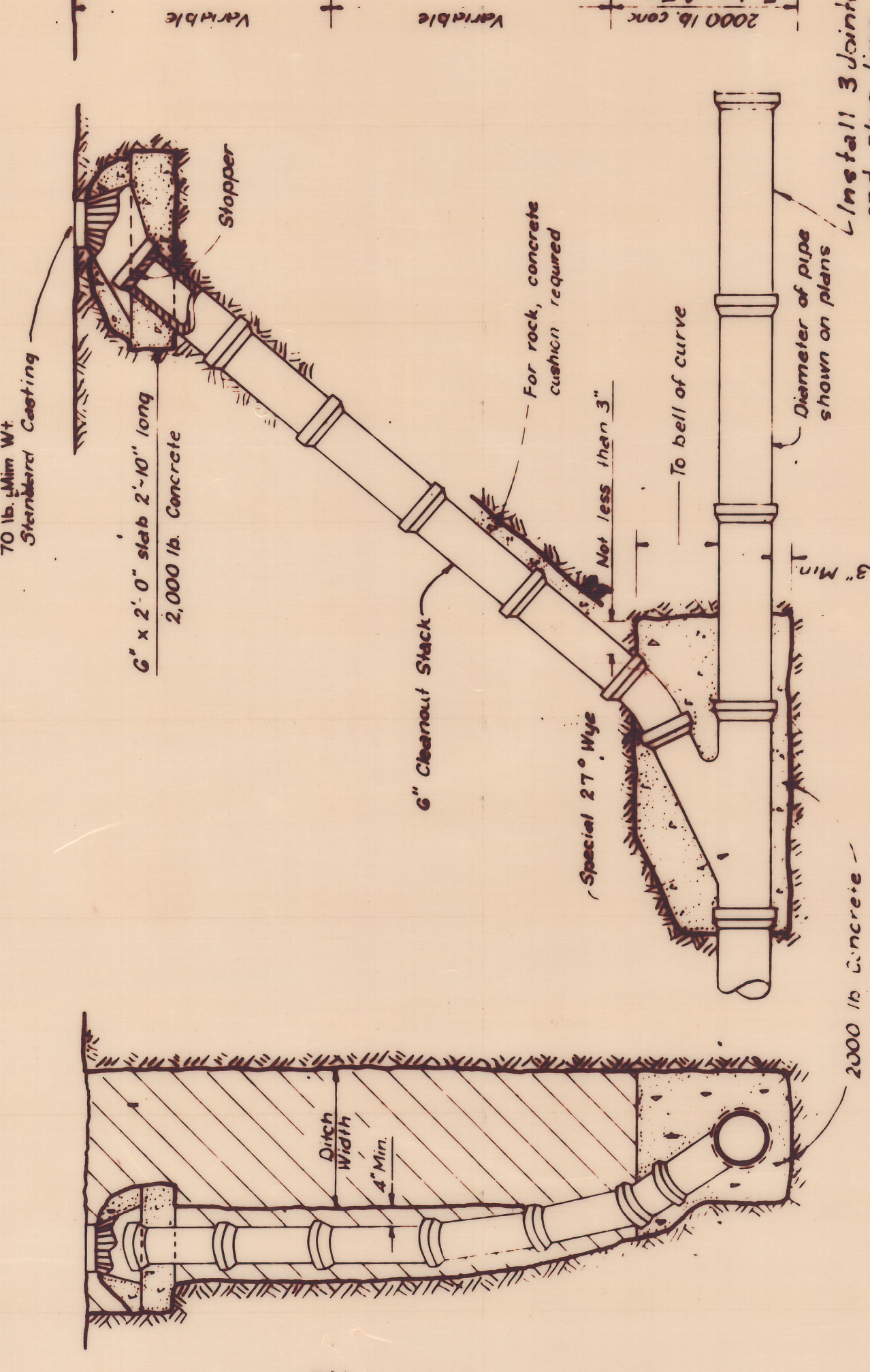
HALF PLAN AND SECTION OF FRAME AND COVER
STANDARD C.I. MANHOLE FRAME & COVER
 As Manufactured by DALLAS FOUNDRY NO 700 & or
 approved equal. Wgt 400 pounds



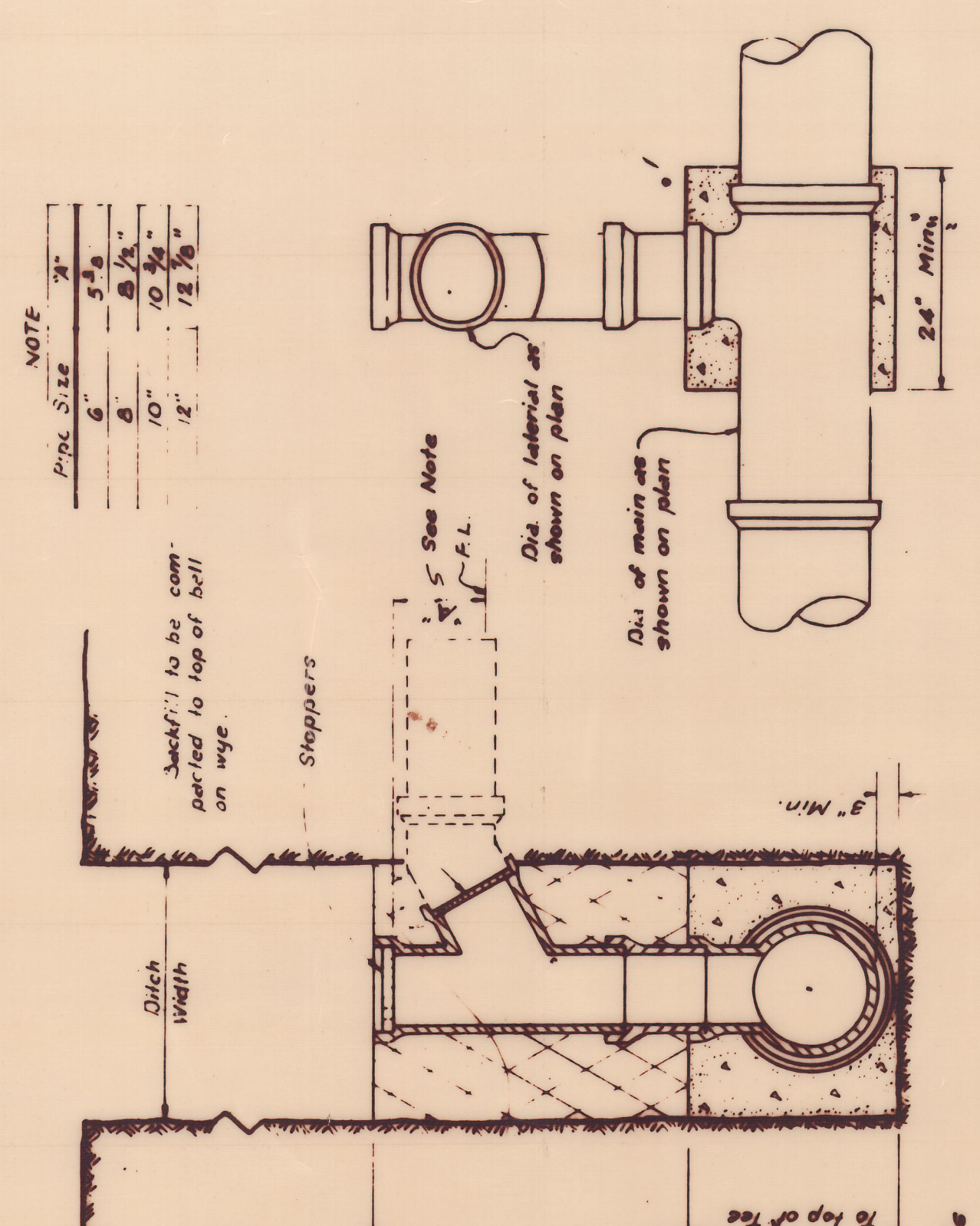
STANDARD MANHOLE



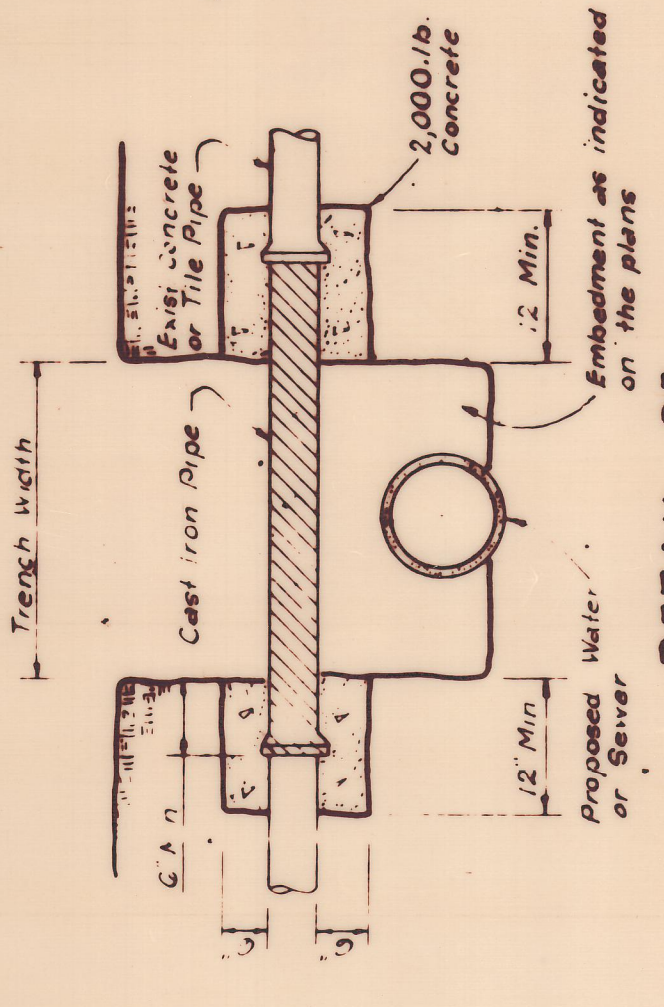
STANDARD DROP CONNECTION MANHOLE



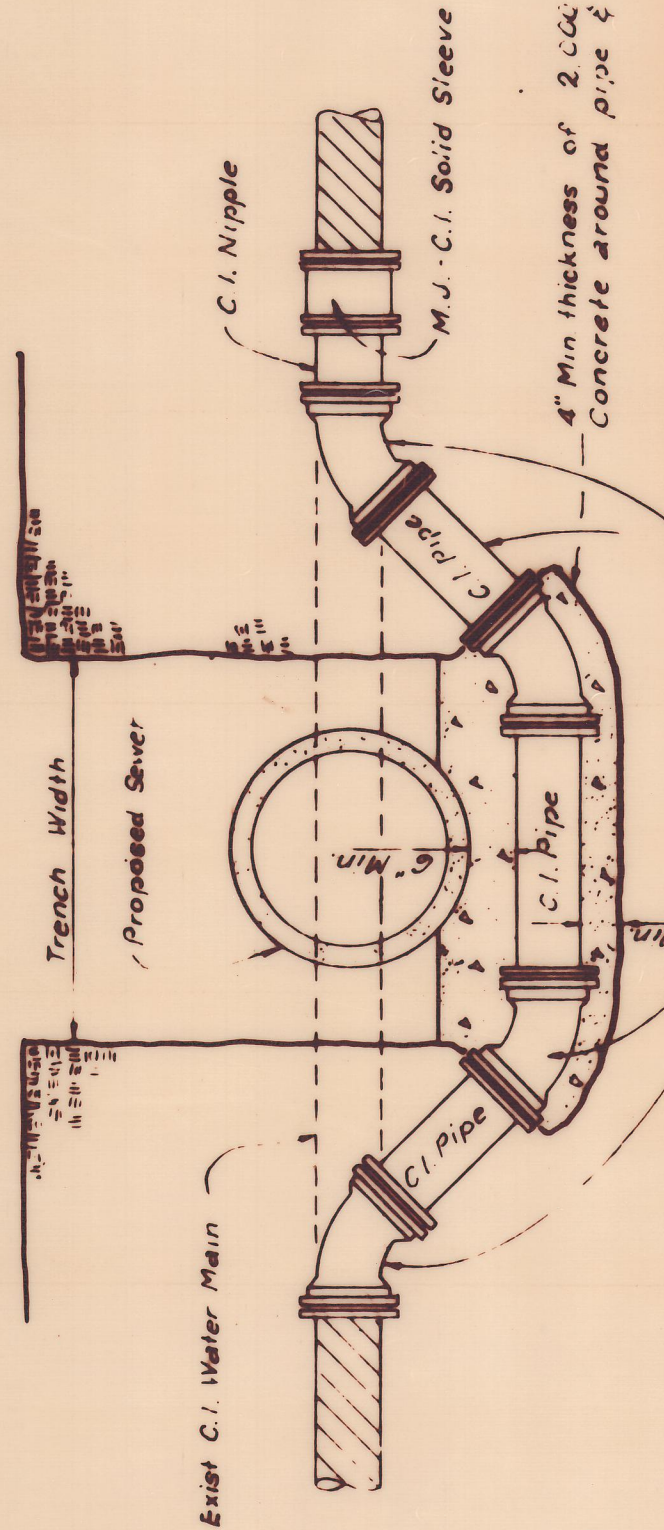
STANDARD CLEANOUT



END ELEVATION
DROP CONNECTION
SIDE ELEVATION



DETAIL OF UTILITY SUPPORT



DETAIL FOR WATER MAIN LOWERING

NOTE

Pipe Size	3"
	5"
	6"
	8"
	10"
	12"

REVISED MARCH, 1978 L.E.D.
 REVISED MARCH, 1975 J.H.D.

QUORUM

SANITARY SEWER DETAILS
 Graham Associates, Inc.
 CONSULTING ENGINEERS & PLANNERS

DESIGN	DRW	C	DATE	SCALE	SHEET NO
REV	RLD	D.P.	3-1-79	NONE	8 OF 22