

TRENCH BEDDING IN EARTH FOR PRECAST PIPE WITHOUT CONCRETE CRADLE OR CUSHION

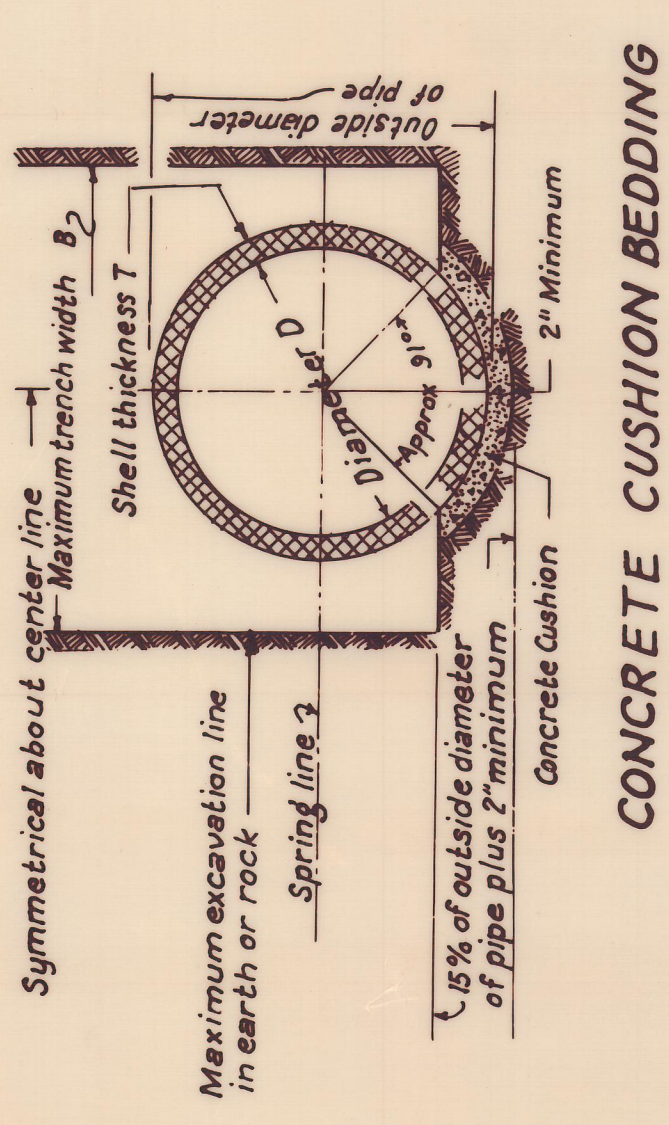
This method of trench bedding and backfill will be required in the construction of all precast pipe sewers where concrete cradle and cushion is not used.

BACKFILL FOR ALL PRECAST PIPE WITH TRENCH BEDDING, CONCRETE CRADLE, AND CUSHION

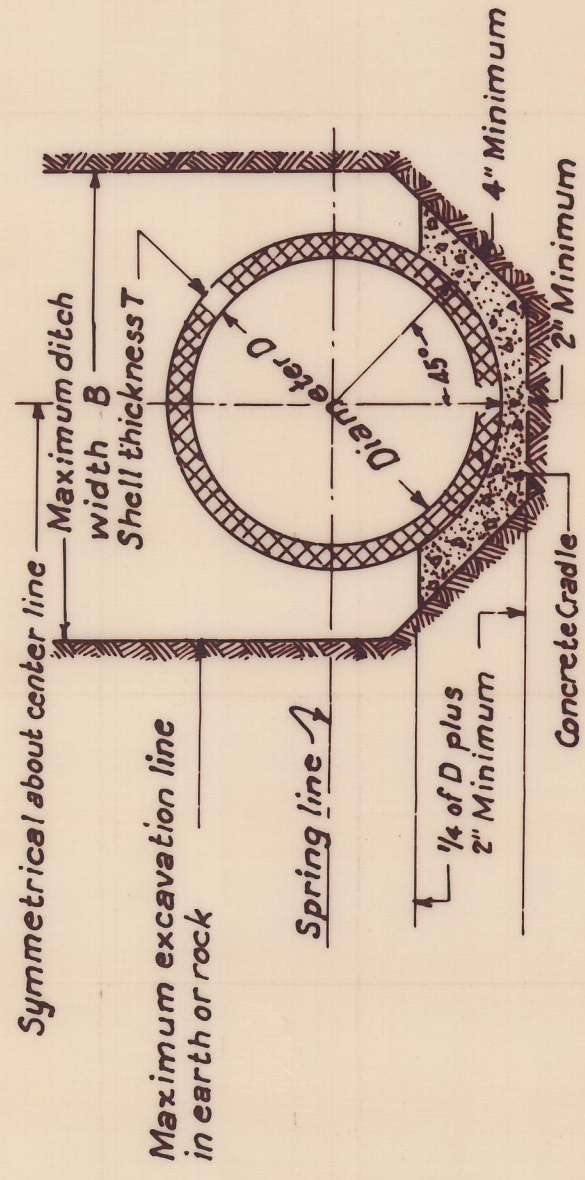
This method of backfill will be required in the construction of all precast pipe sewers with concrete cradle and concrete cushion.

NOTES

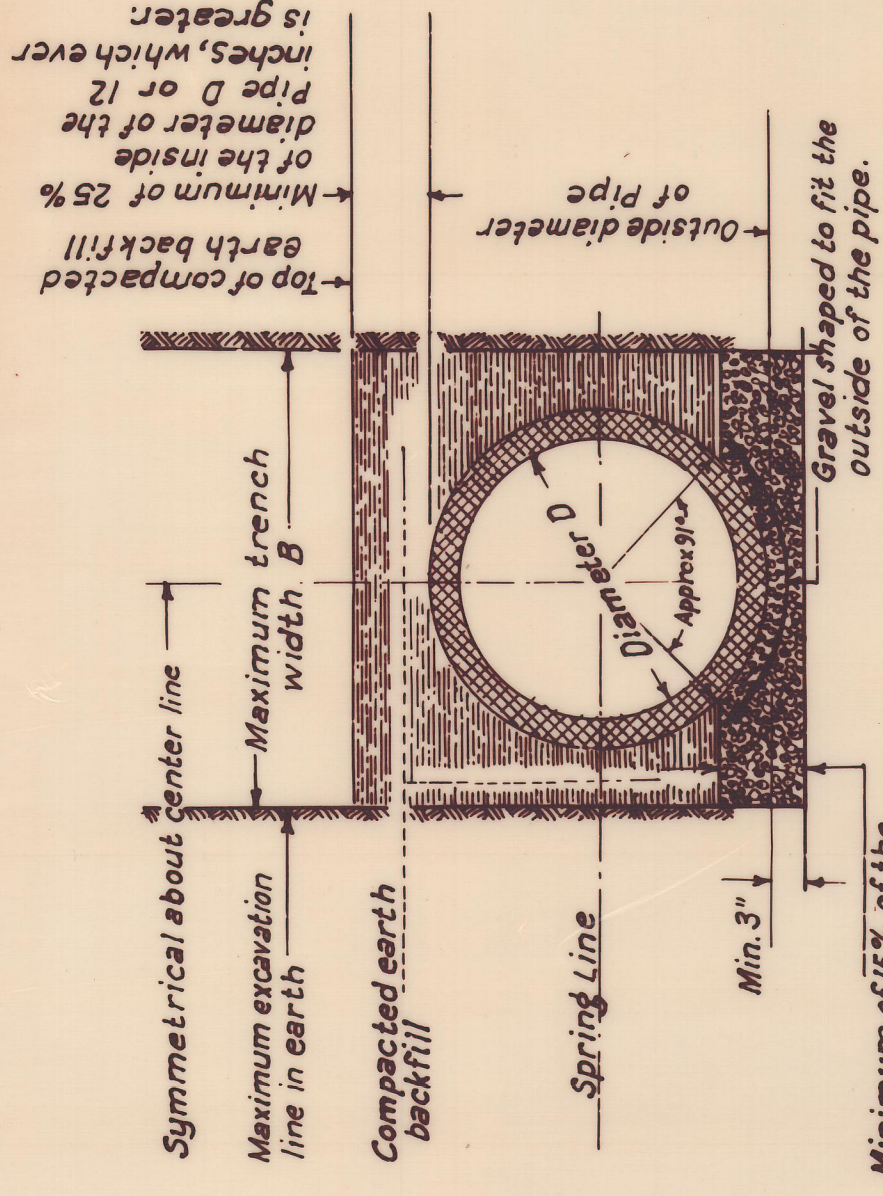
- Concrete for cushion or for cradle shall consist of 1 part cement and 12 parts aggregate. Any unauthorized excess excavation for cushion or cradle shall be filled with concrete at the contractor's expense. No pipe shall be laid in a rock trench without using concrete cushion unless another type of bedding is approved by the Engineer.
- The maximum trench width (B) shall be the outside diameter of the pipe used plus 16 inches for pipe with 33 inch diameter or smaller. The maximum trench width (B) shall be the outside diameter of the pipe plus 24 inches for pipes larger than 33 inch inside diameter.
- The City of Dallas General Specifications shall govern the quality, placement, measurement and payment of reinforced concrete pipe conforming to designation C 76 of the current A.S.T.M. Specifications.



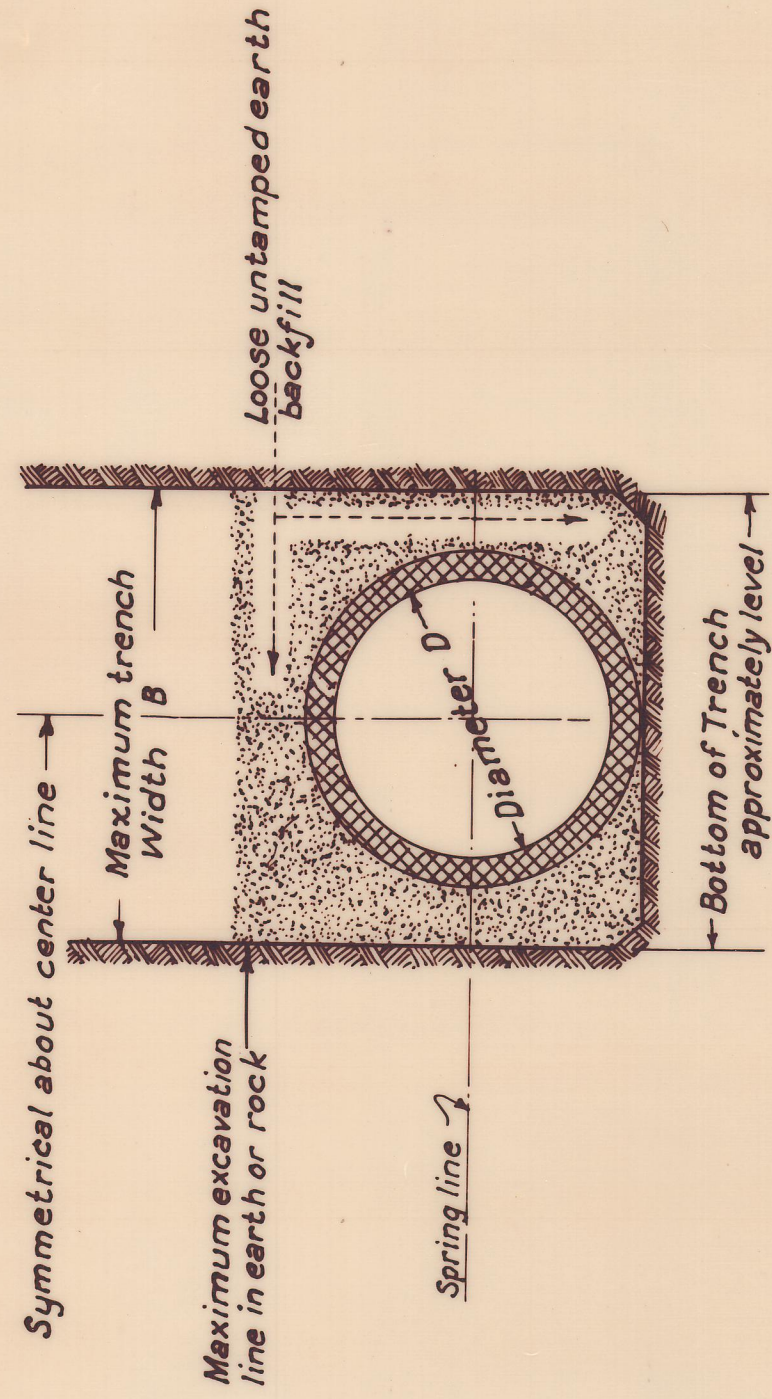
CONCRETE CUSHION BEDDING



CONCRETE CRADLE BEDDING

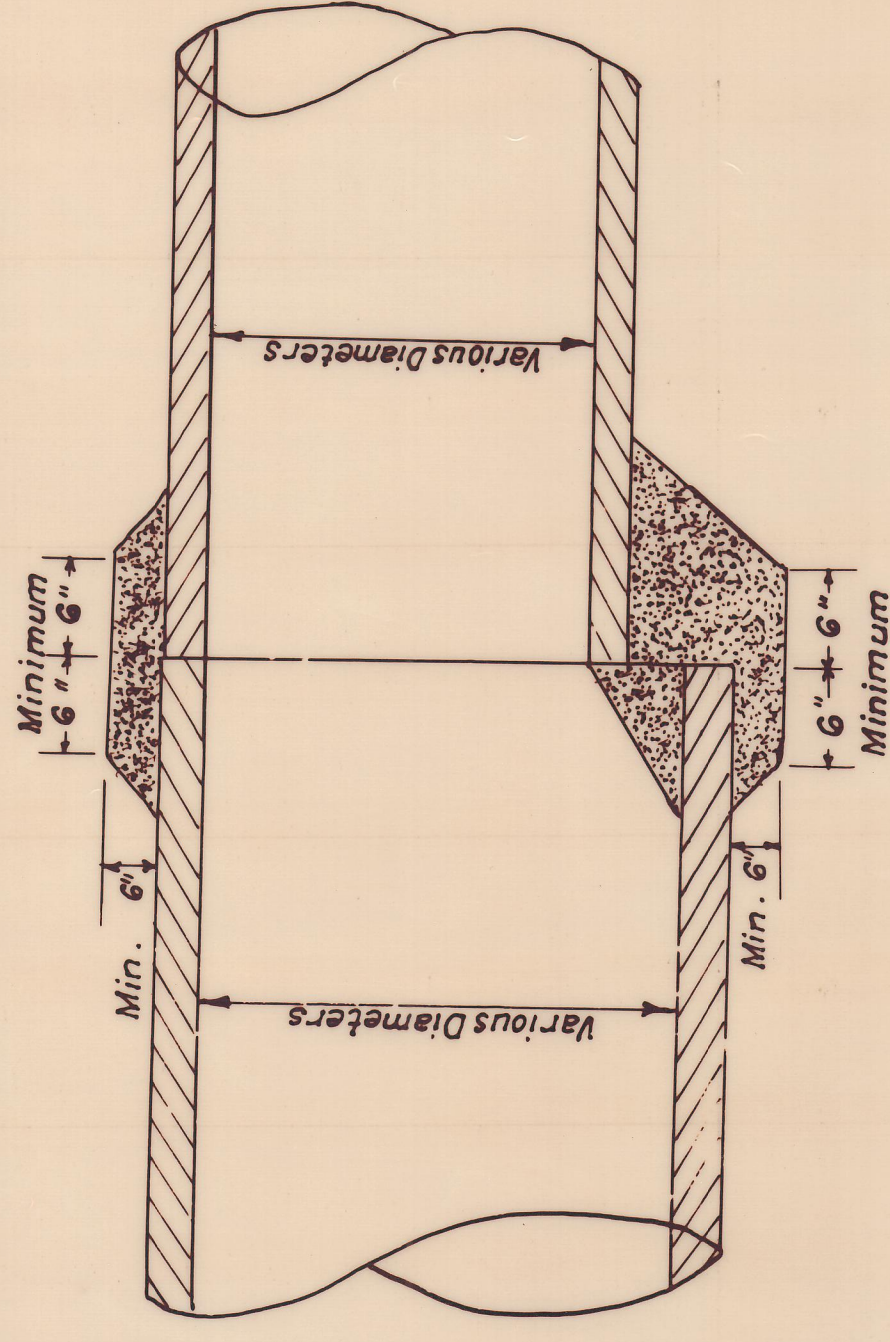


GRAVEL BEDDING



UNACCEPTABLE TRENCH BEDDING AND BACKFILL FOR ALL PRECAST PIPE SEWERS

This method of trench bedding and backfill will not be permitted in the construction of precast pipe sewers.



DETAIL OF CONCRETE COLLAR FOR END TO END PIPE EXTENSIONS

QUOROM

RA
8/4/80

STANDARD DETAILS				
CONCRETE CRADLE AND CUSHION AND TRENCH BEDDING				
DEPT. OF PUBLIC WORKS				
CITY OF DALLAS, TEXAS				
DESIGN DRAWN	DATE	SCALE	NOTES	SHEET NO.
W.C.C.	D.T.C.	3/25/64	None	424Q 21 of 22