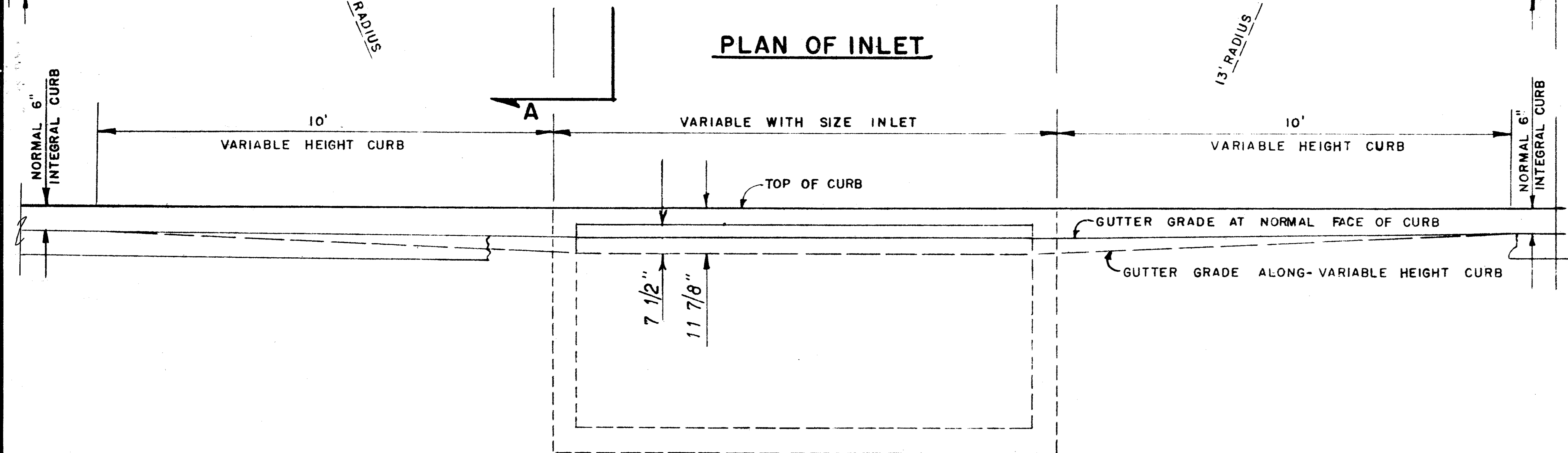
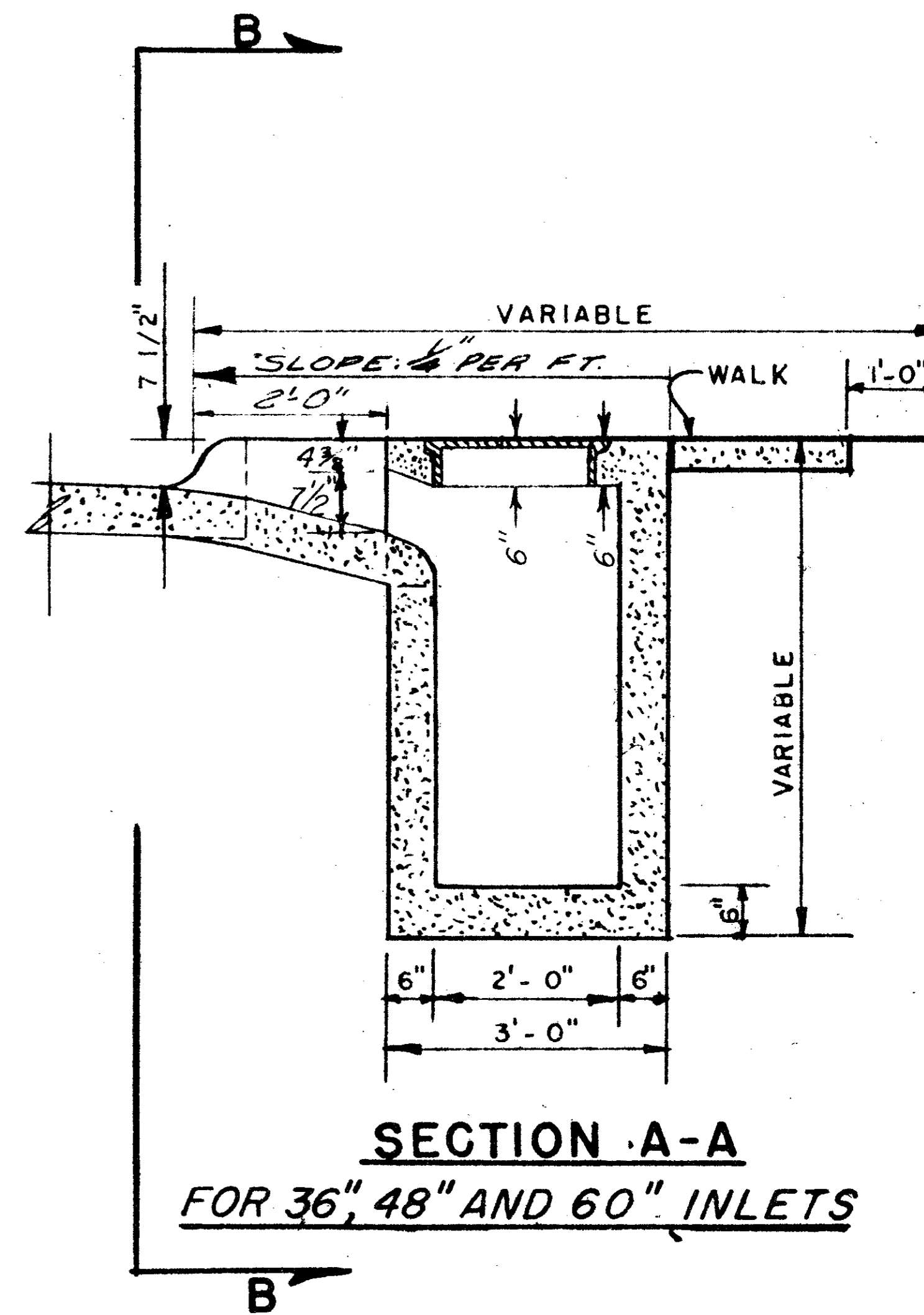


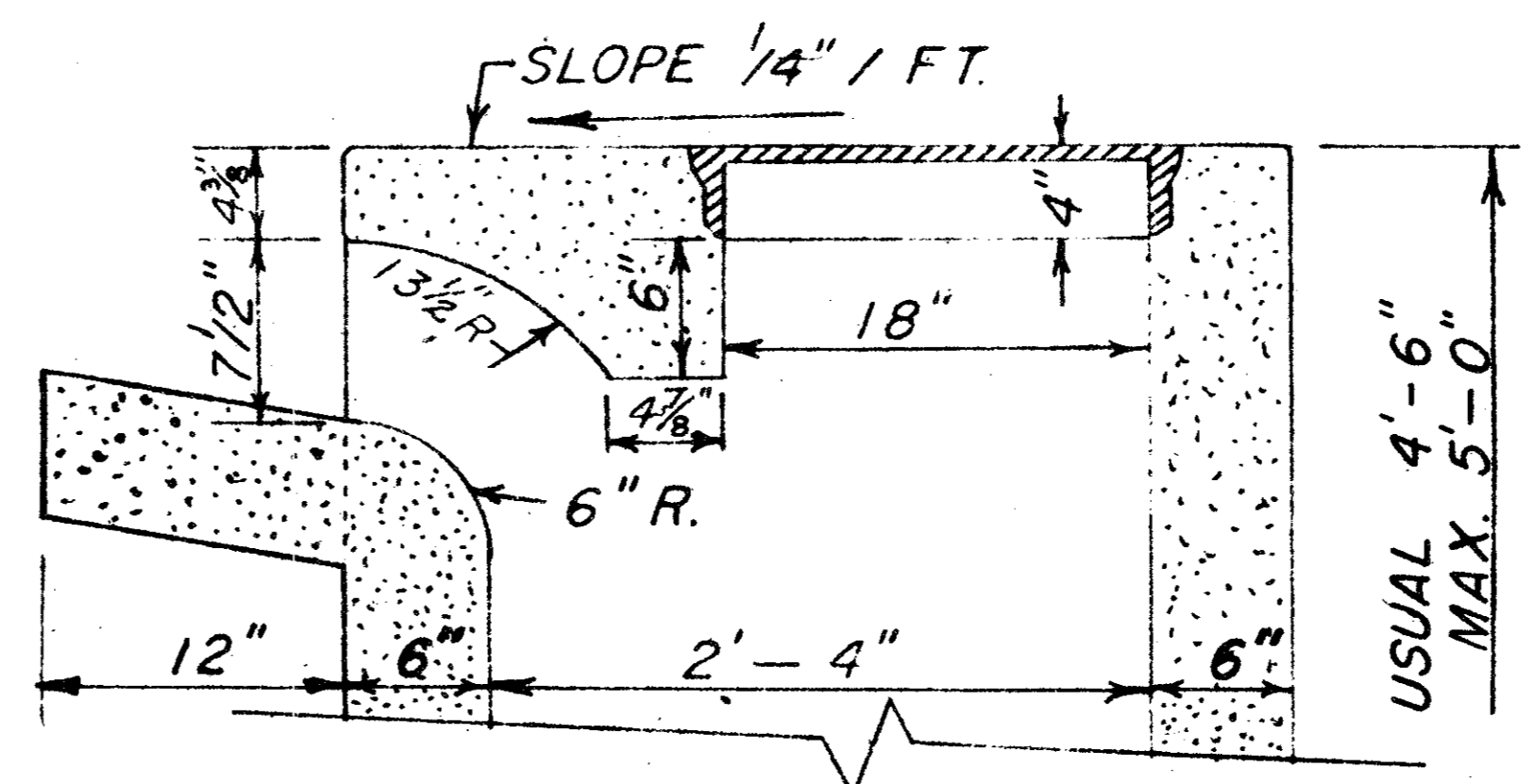
PLAN OF INLET



SECTION B-B



**SECTION A-A
FOR 36", 48" AND 60" INLETS**



**SECTION A-A
FOR 6, 8 AND 10 FT. INLETS**

NOTE.
SEE FILE 424Q-7 FOR REINFORCING
AND BEAM DESIGN

RH
8/6/80

**DETAILS OF
STANDARD RECESSED STORM
SEWER INLETS AND CURBS**
**DEPARTMENT OF PUBLIC WORKS
CITY OF DALLAS, TEXAS**

REV. 1-31-62

3-1-79

| SCALE | FILE | SHEET NO. |
|--------------|------|-----------|
| 3/8" = 1'-0" | 424 | 19 of 22 |