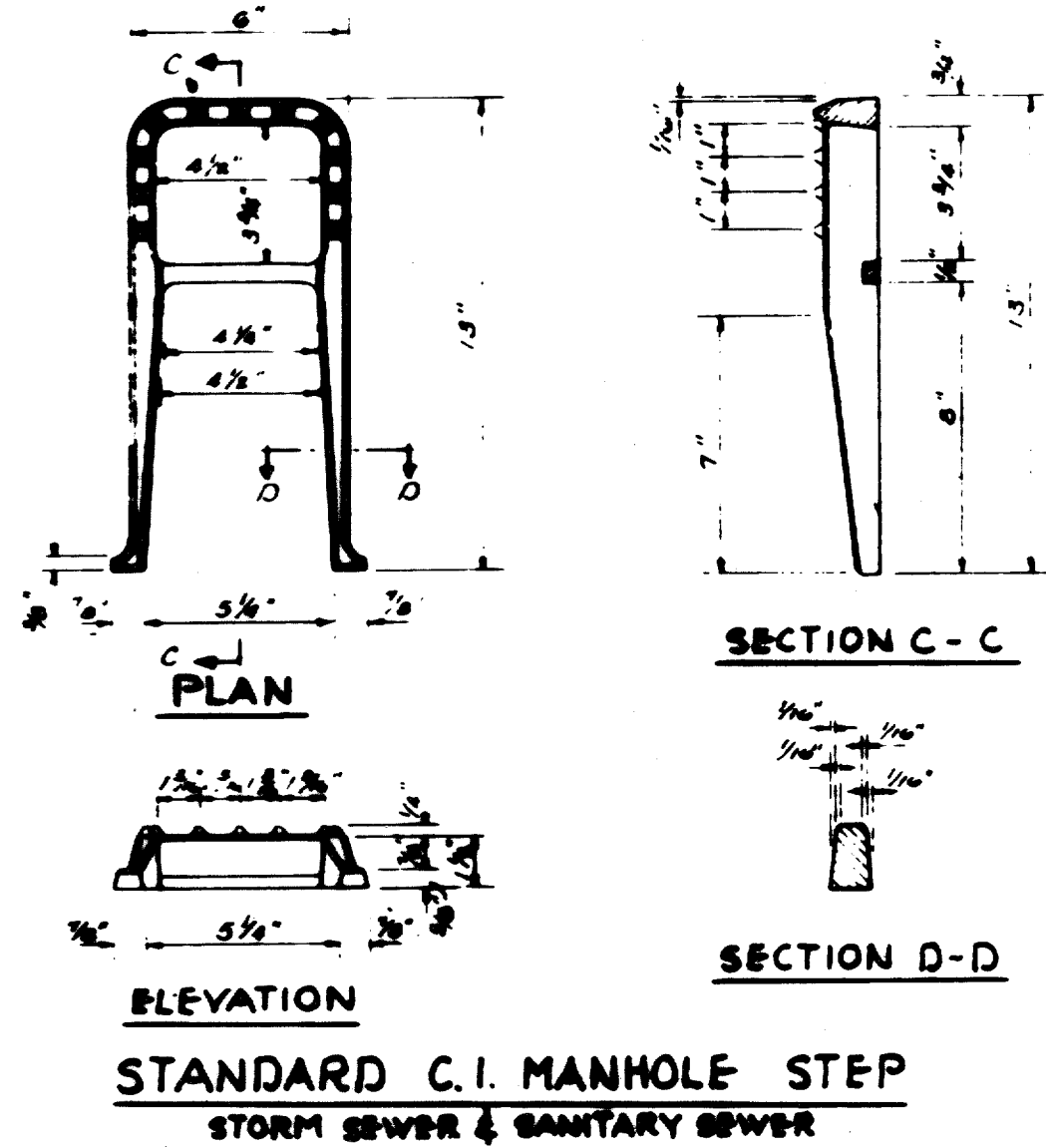
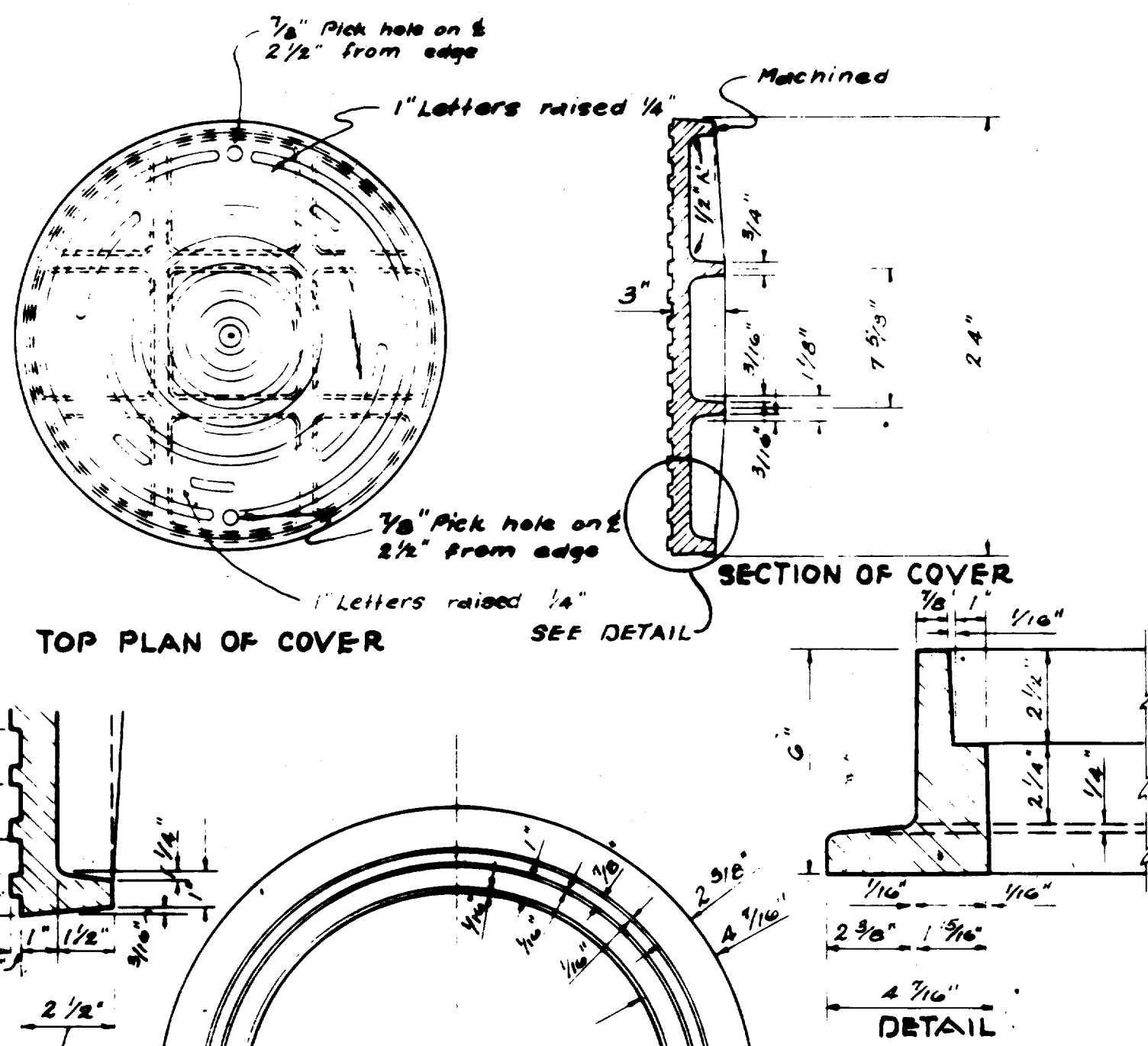


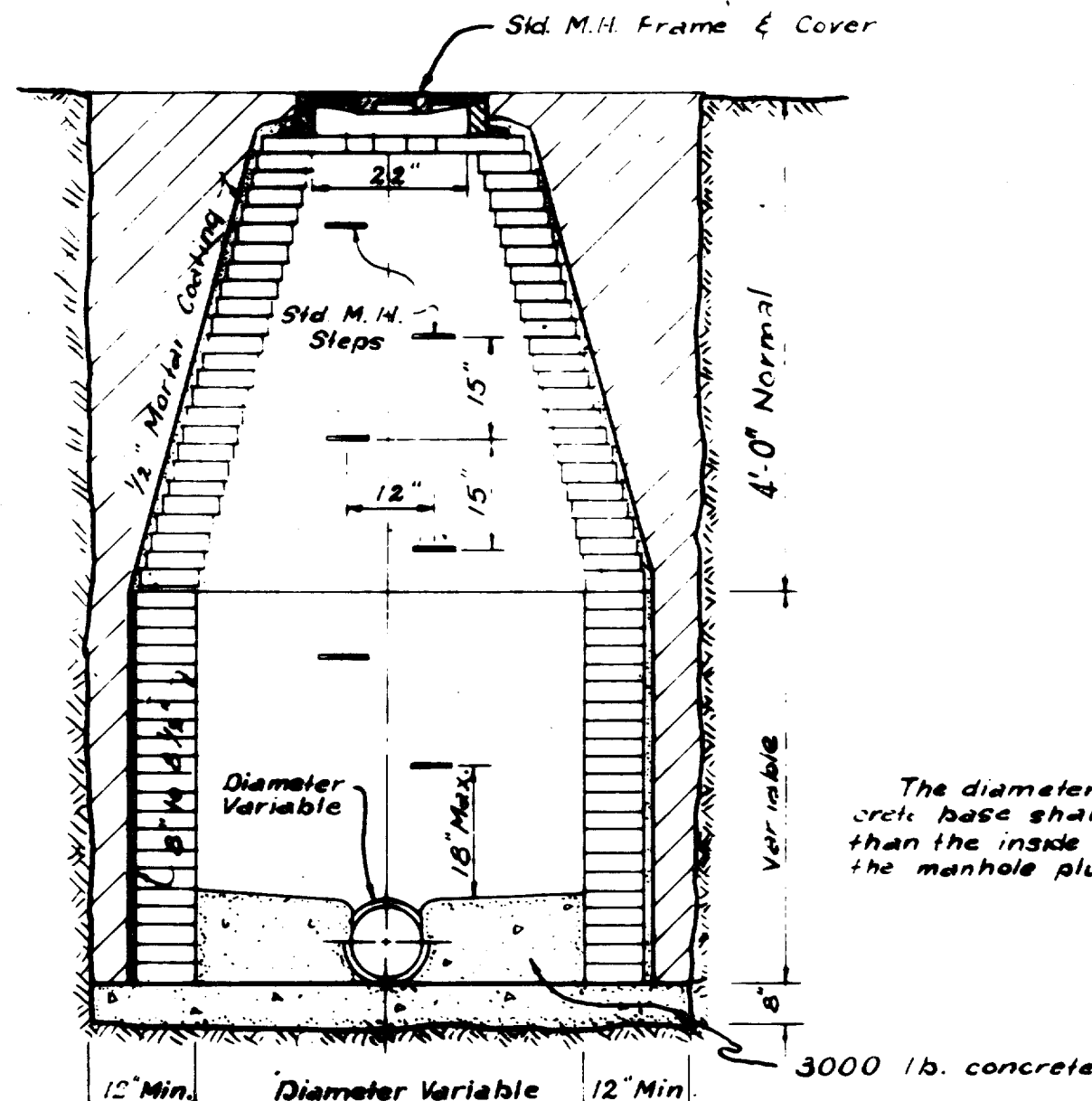
**STANDARD WATER TIGHT - SOLID SEAL MANHOLE FRAME AND COVER**  
**TO BE USED ON STANDARD MANHOLE**  
 As Manufactured by DALLAS FOUNDRY  
 NO 975-2 or approved equal.  
 Wgt 410 pounds.



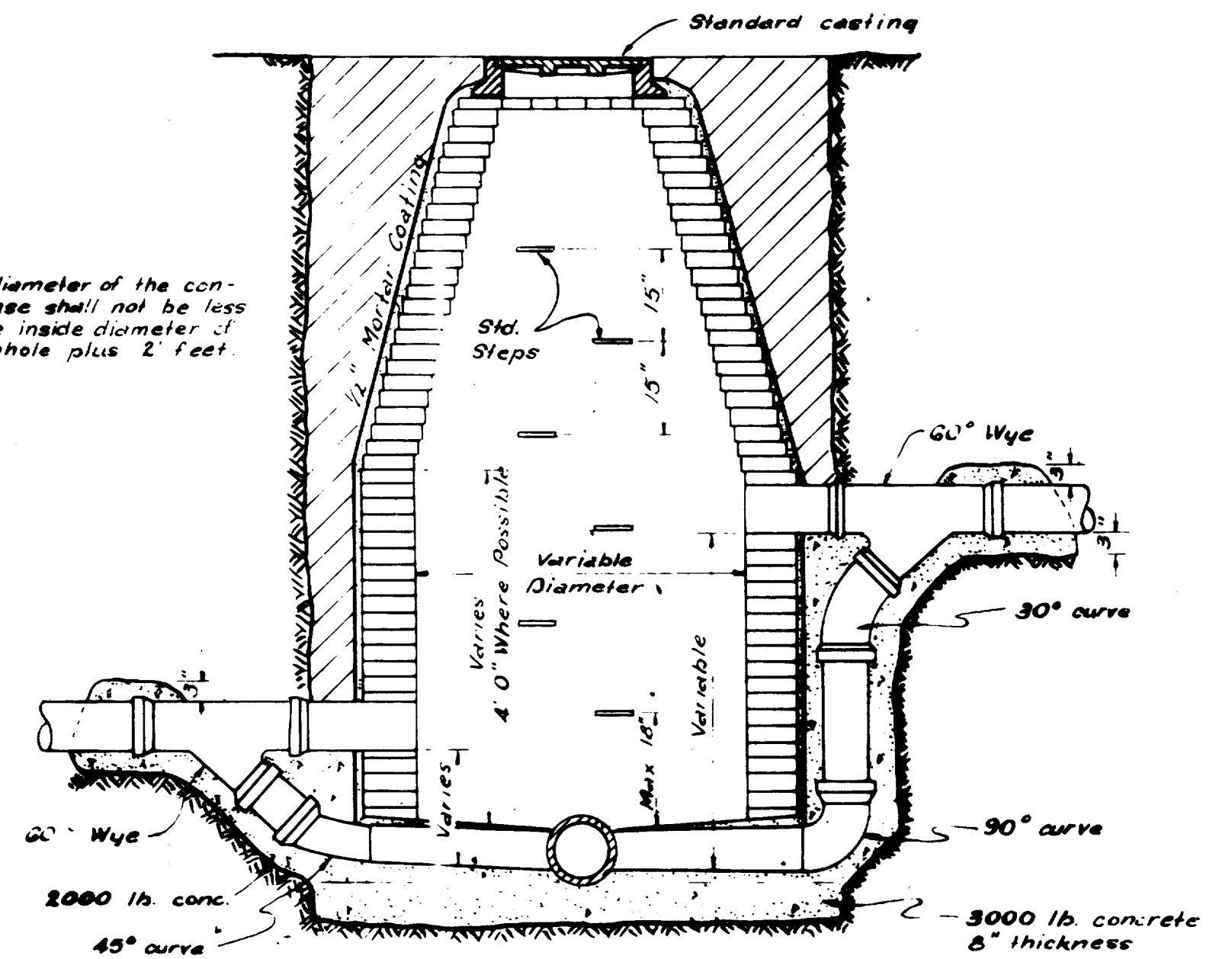
**STANDARD C.I. MANHOLE STEP**  
 STORM SEWER & SANITARY SEWER



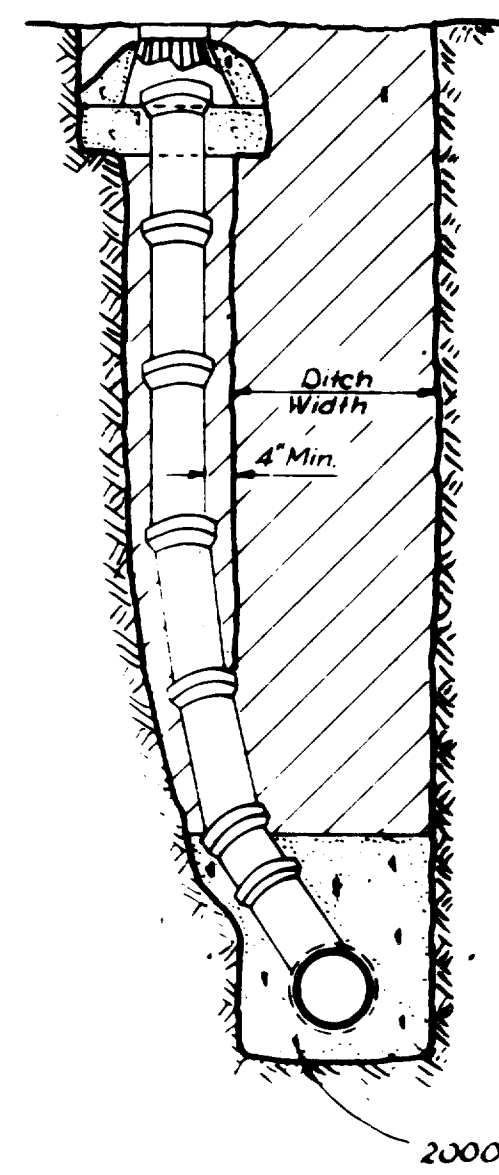
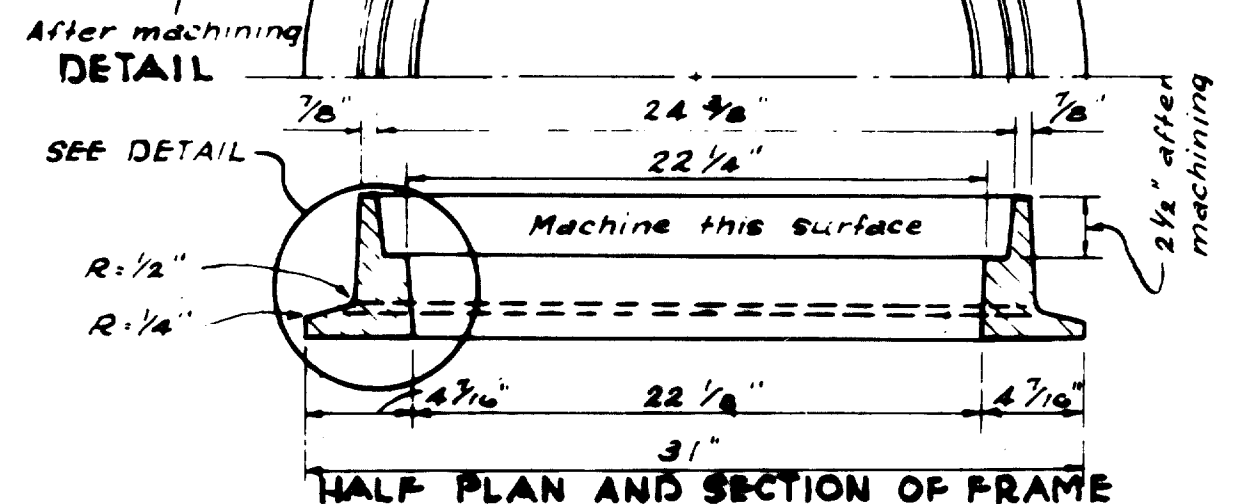
**STANDARD C.I. MANHOLE FRAME & COVER**  
 As Manufactured by DALLAS FOUNDRY NO 100-8 or  
 approved equal. Wgt 100 pounds.



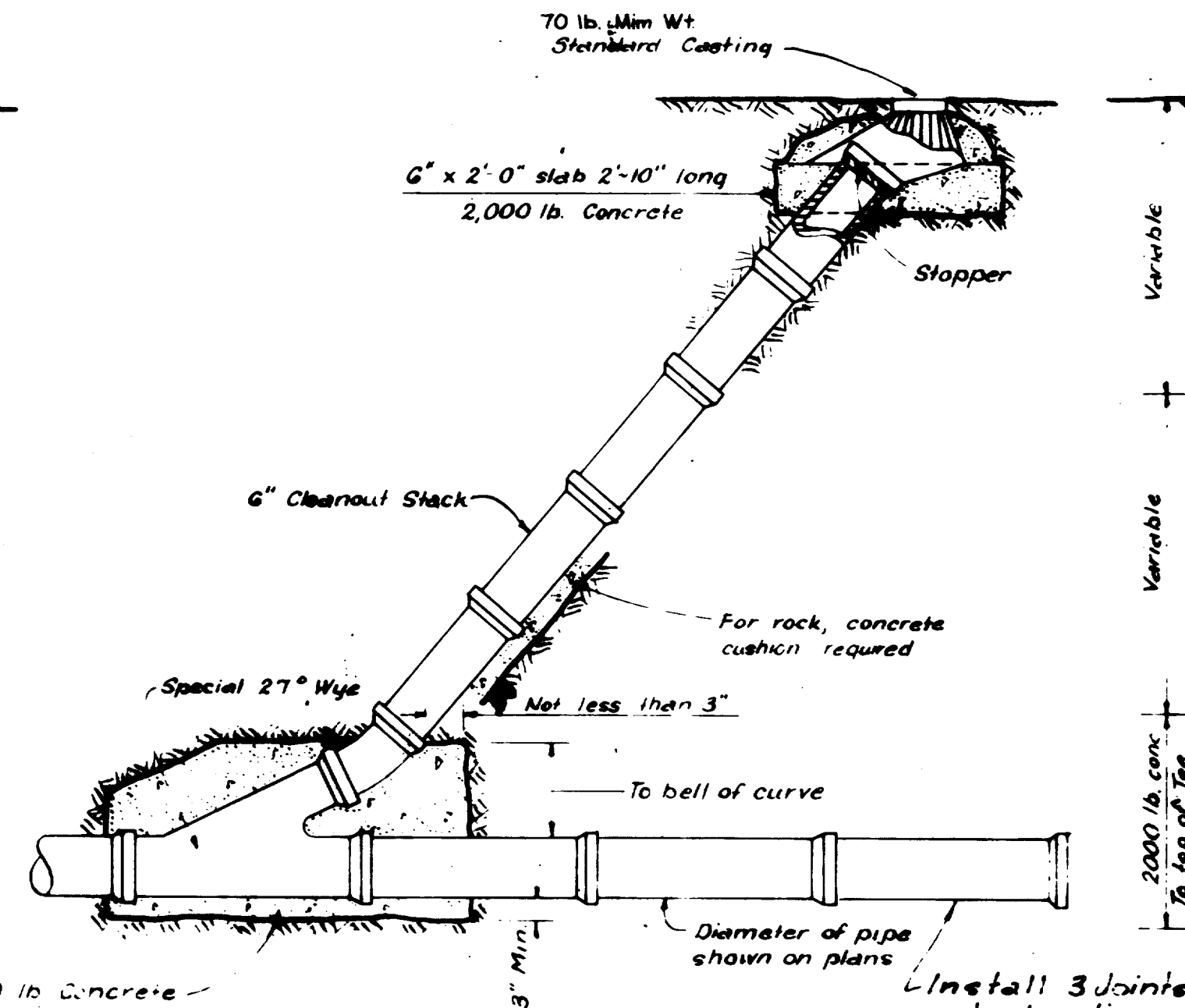
**STANDARD MANHOLE**



**STANDARD DROP CONNECTION MANHOLE**



**STANDARD CLEANOUT**

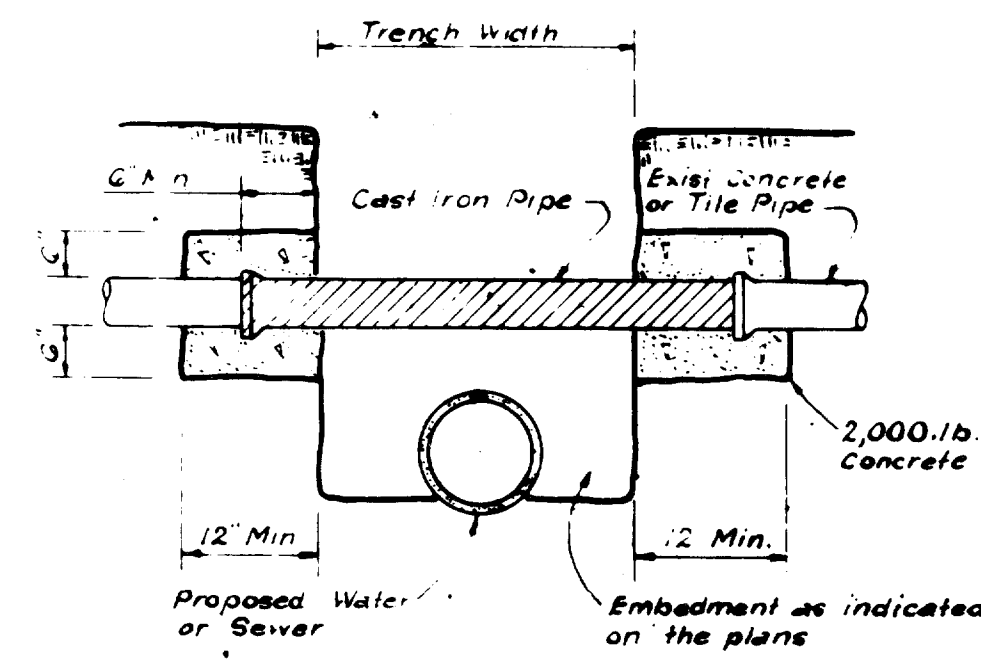


**END ELEVATION**

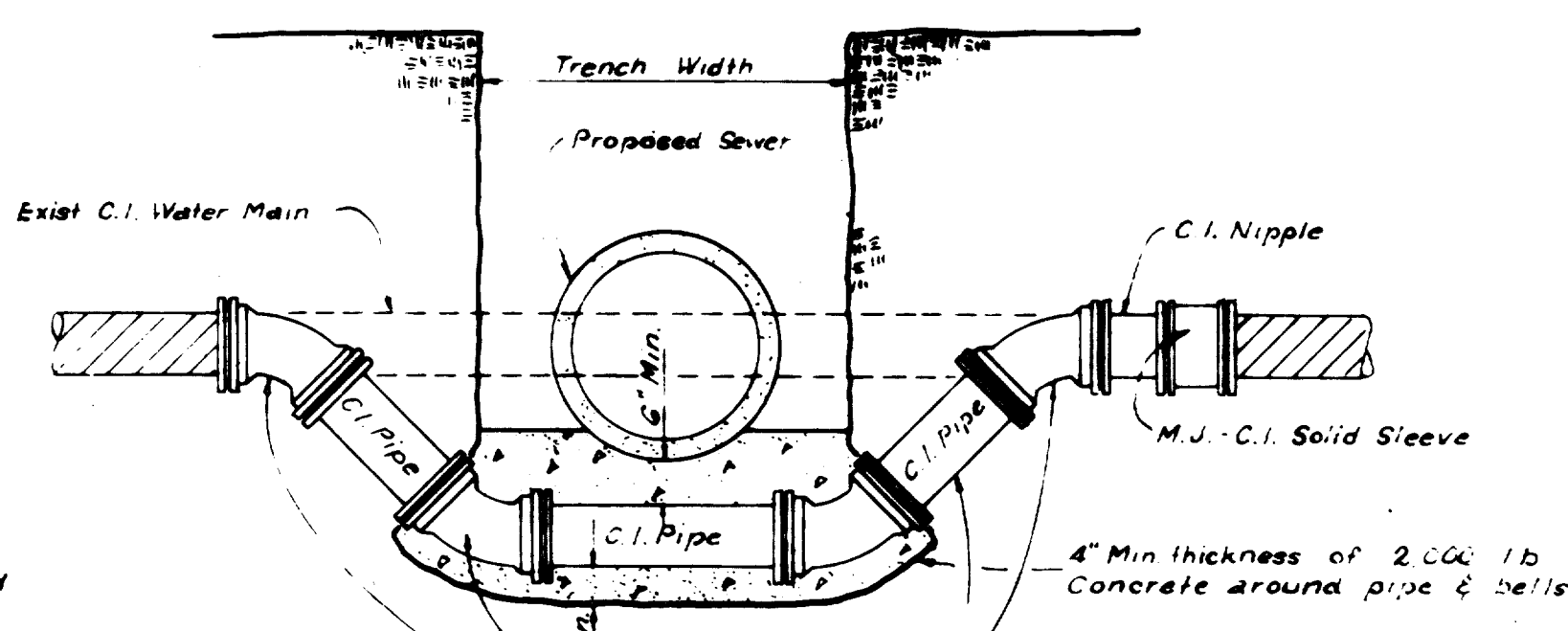
NOTE

PIPE SIZE	W
6"	5 3/8"
8"	8 1/2"
10"	10 3/4"
12"	12 3/8"

**DROP CONNECTION**



**DETAIL OF UTILITY SUPPORT**



**DETAIL FOR WATER MAIN LOWERING**

REVISED MARCH, 1978 L.E.D.  
 REVISED MARCH, 1975 J.H.D.

**QUORUM**

**SANITARY SEWER DETAILS**

**Graham Associates, Inc.**  
 CONSULTING ENGINEERS & PLANNERS

DESIGN	DRAWN	CHECKED	DATE	SCALE	SHEET NO.
R.E.V.	R.L.D.	D.P.	3-1-79	NONE	8 OF 22

RH  
 8/6/80