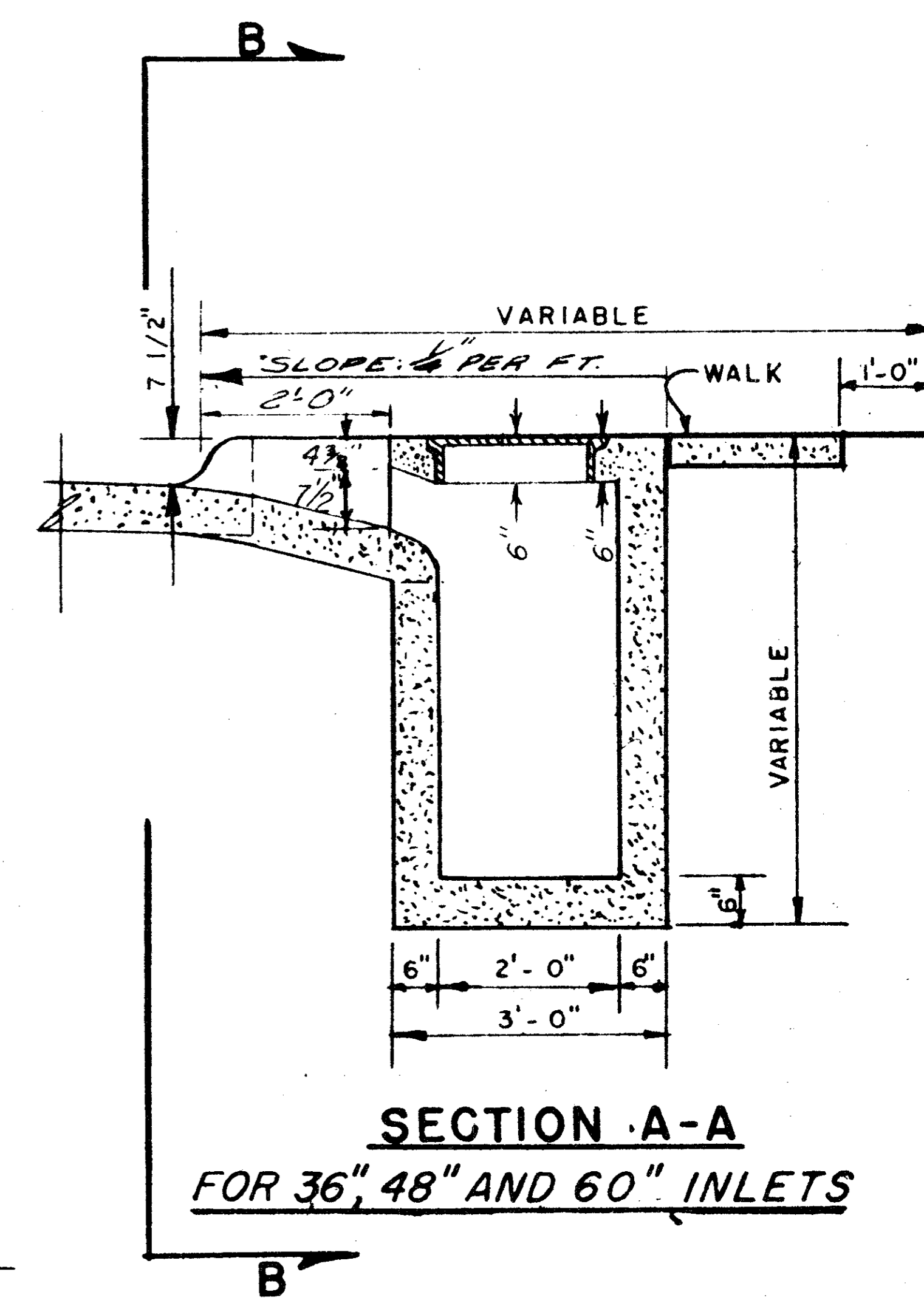
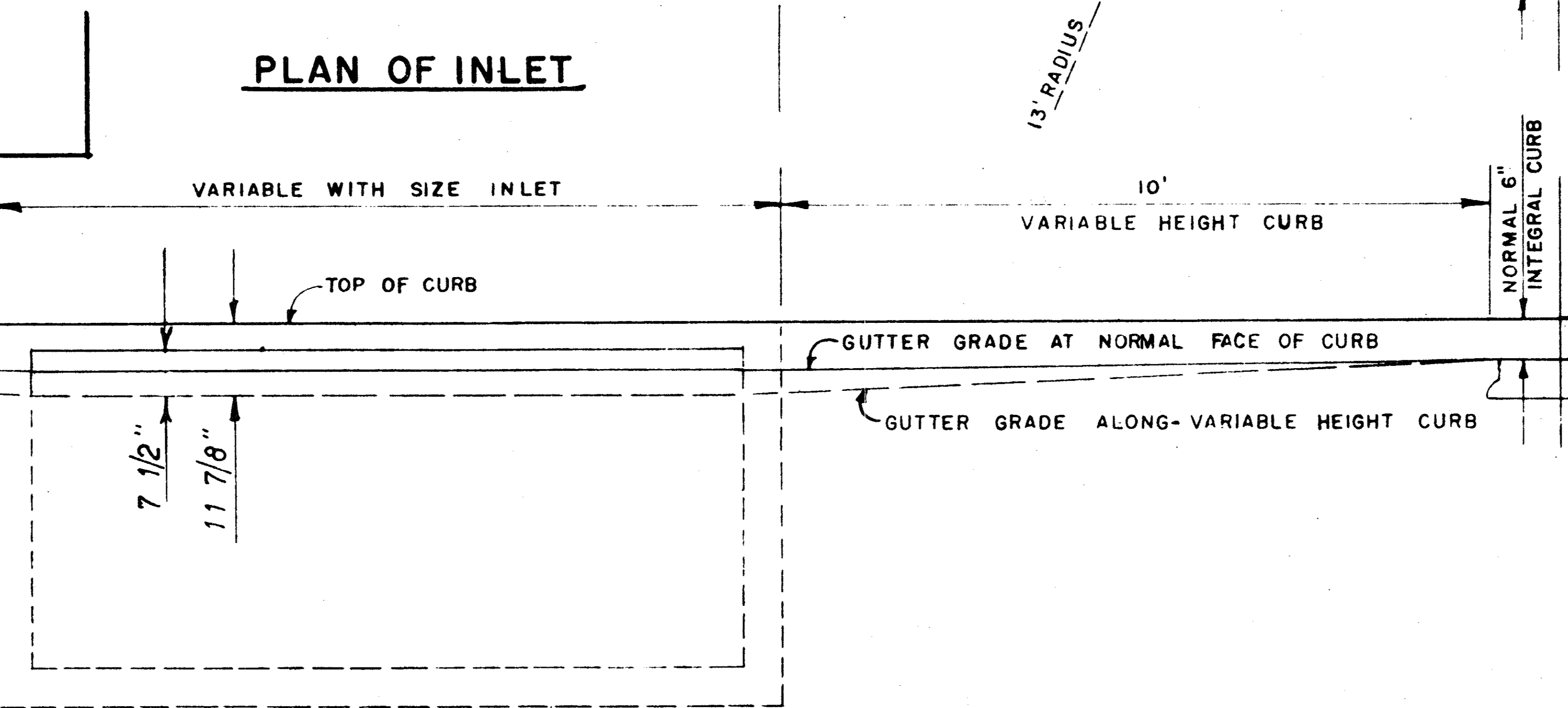


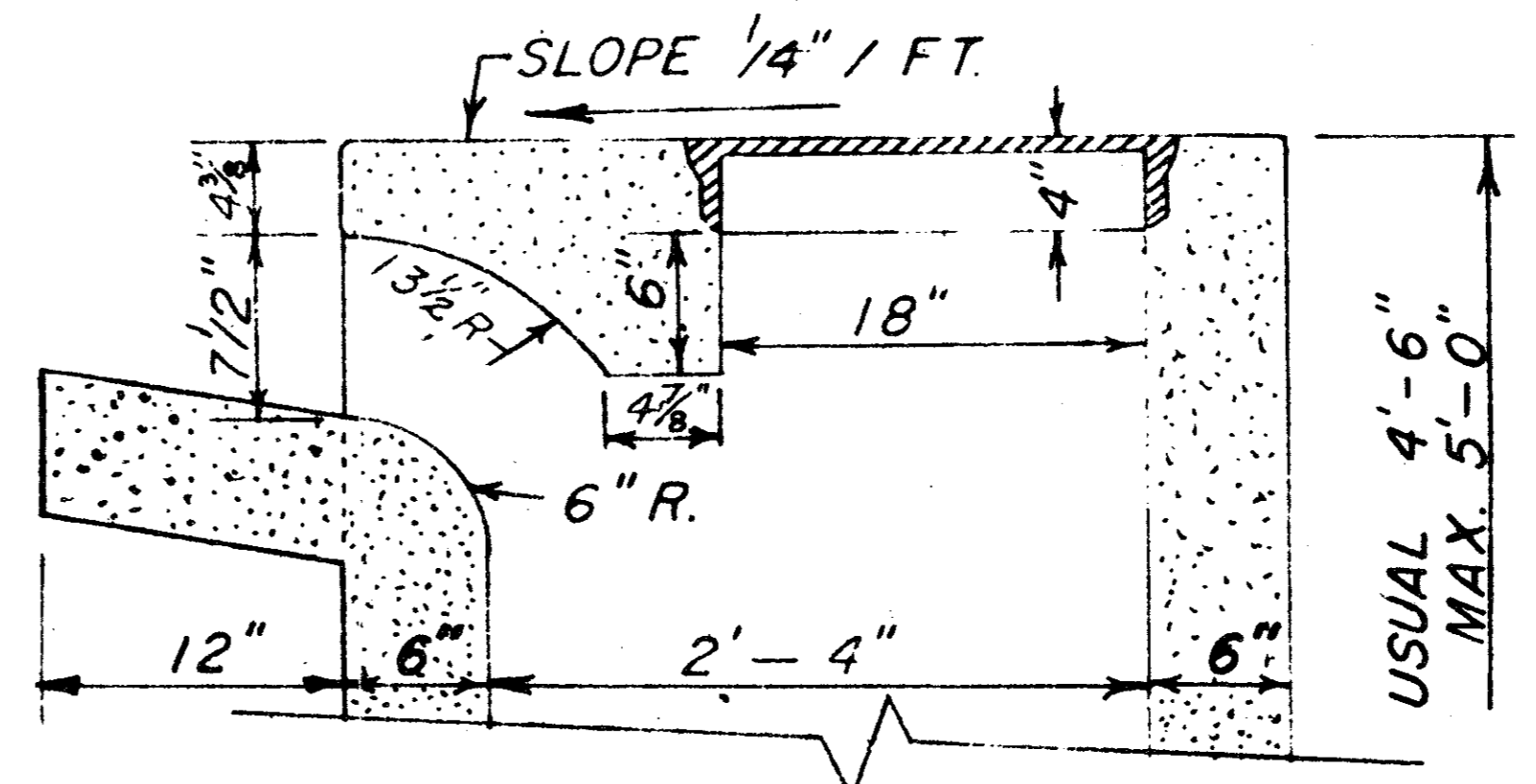
PLAN OF INLET



**SECTION A-A
FOR 36", 48" AND 60" INLETS**



SECTION B-B



**SECTION A-A
FOR 6, 8 AND 10 FT. INLETS**

NOTE.
SEE FILE 424Q-7 FOR REINFORCING
AND BEAM DESIGN

DETAILS OF STANDARD RECESSED STORM SEWER INLETS AND CURBS		
DEPARTMENT OF PUBLIC WORKS CITY OF DALLAS, TEXAS		
SCALE	FILE	SHEET NO.
3/8" = 1'-0"	425-2245	13 of 15