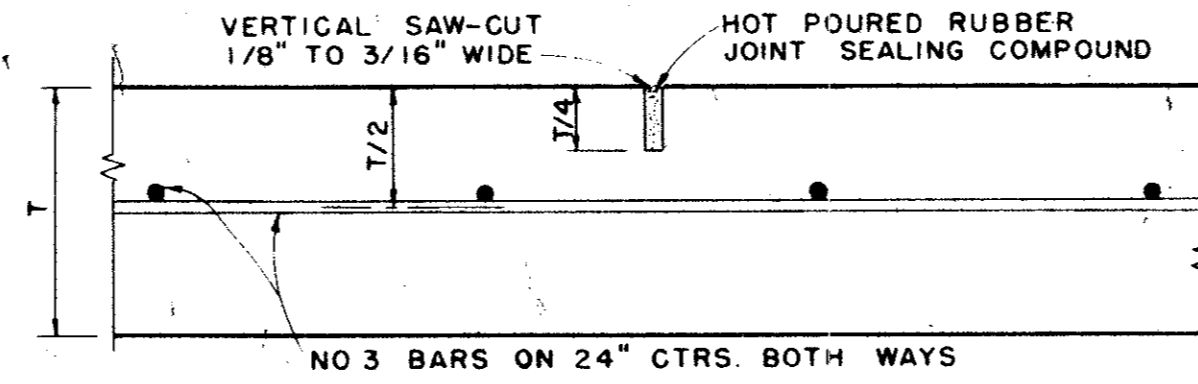
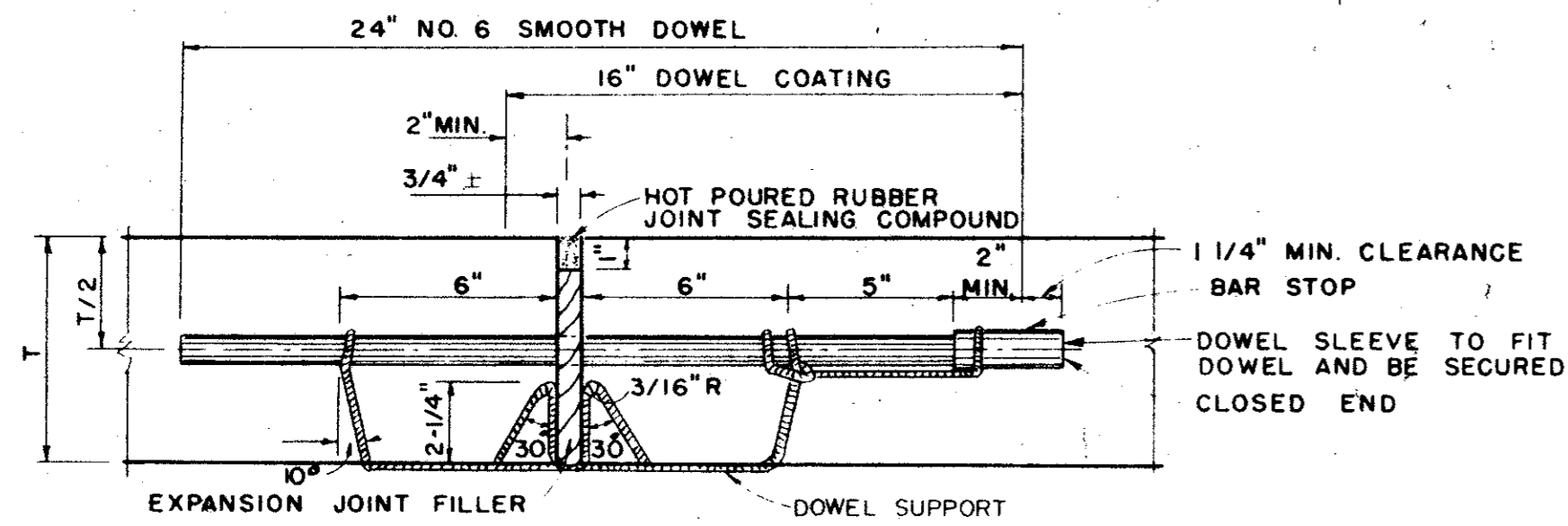


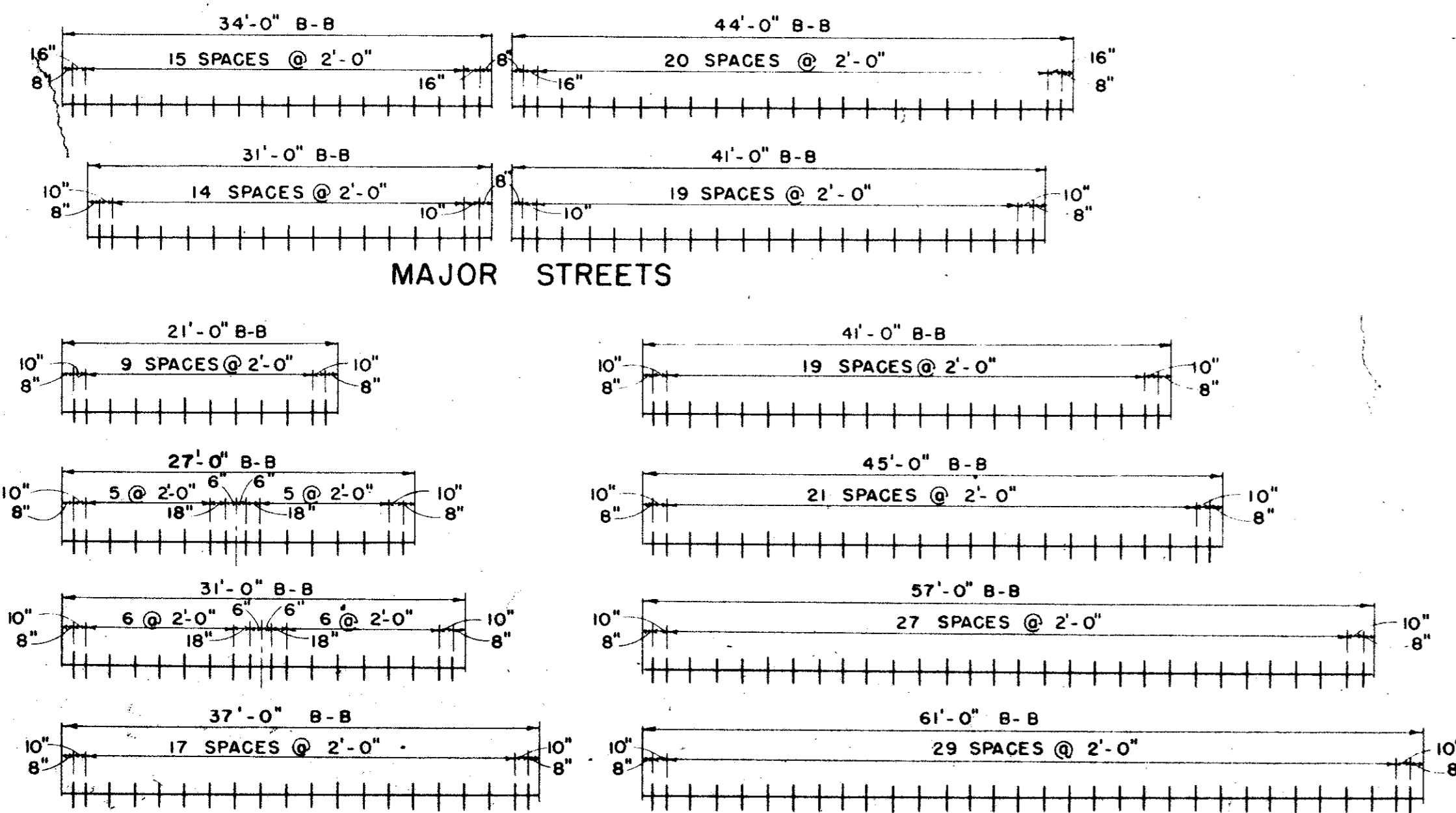
SPACING DIAGRAM FOR JOINTS
IDENTICAL FOR STREETS (CONCRETE PAVEMENT OR BASE) AND ALLEYS EXCEPT THAT EXPANSION JOINTS FOR ALLEYS SHALL BE PLACED AT THE END OF THE RETURN IN LINE WITH THE PROPERTY LINE. SPACING OF EXPANSION JOINTS SHALL NOT EXCEED 600 FEET.



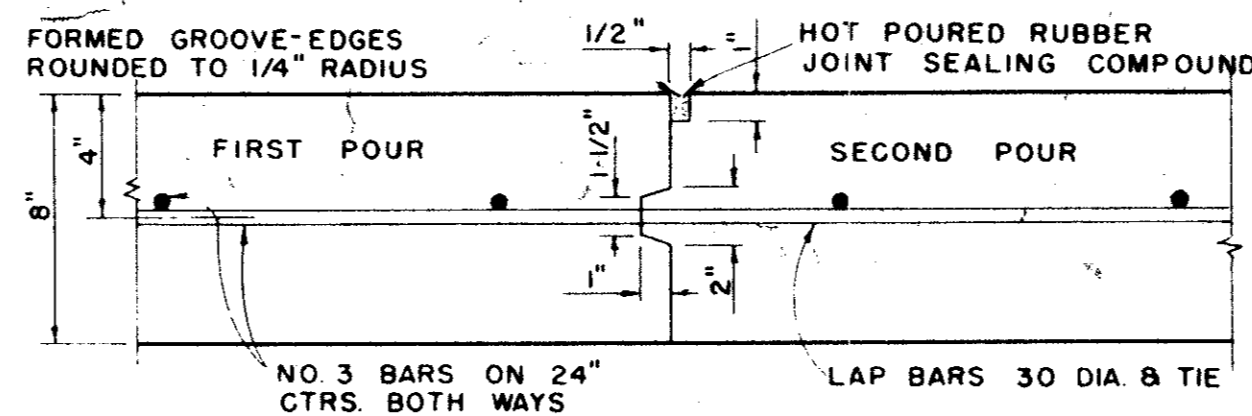
SAWED DUMMY JOINT
IDENTICAL FOR STREETS AND ALLEYS EXCEPT ALLEY LONGITUDINAL REINFORCEMENT BARS



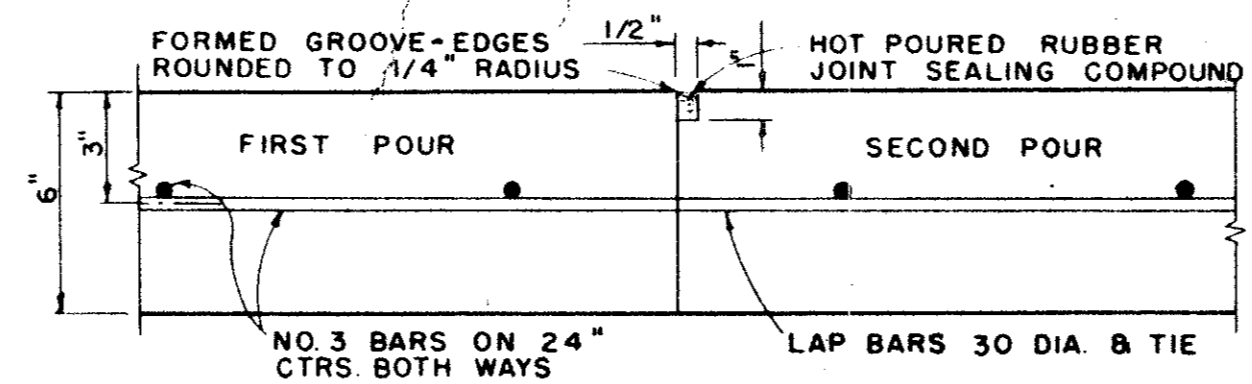
TRANSVERSE EXPANSION JOINT
IDENTICAL FOR STREETS & ALLEYS



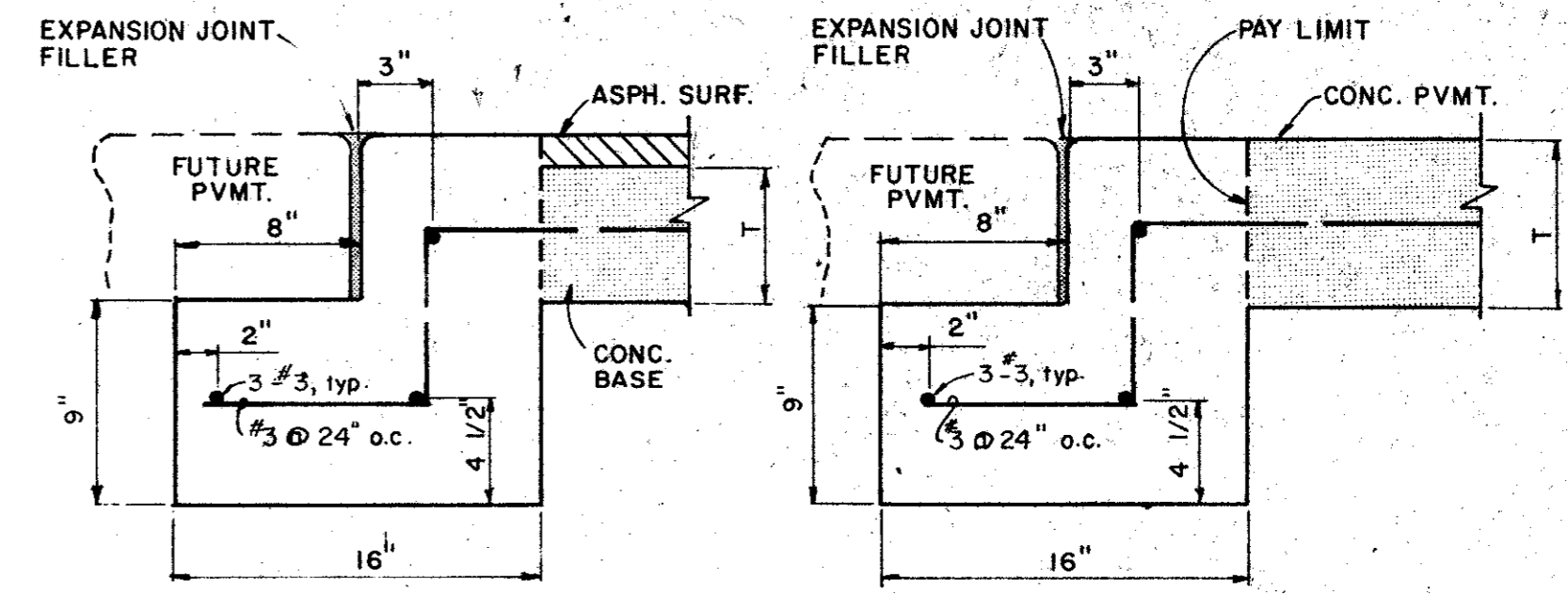
SPACING DIAGRAM FOR DOWELS AT EXPANSION JOINTS



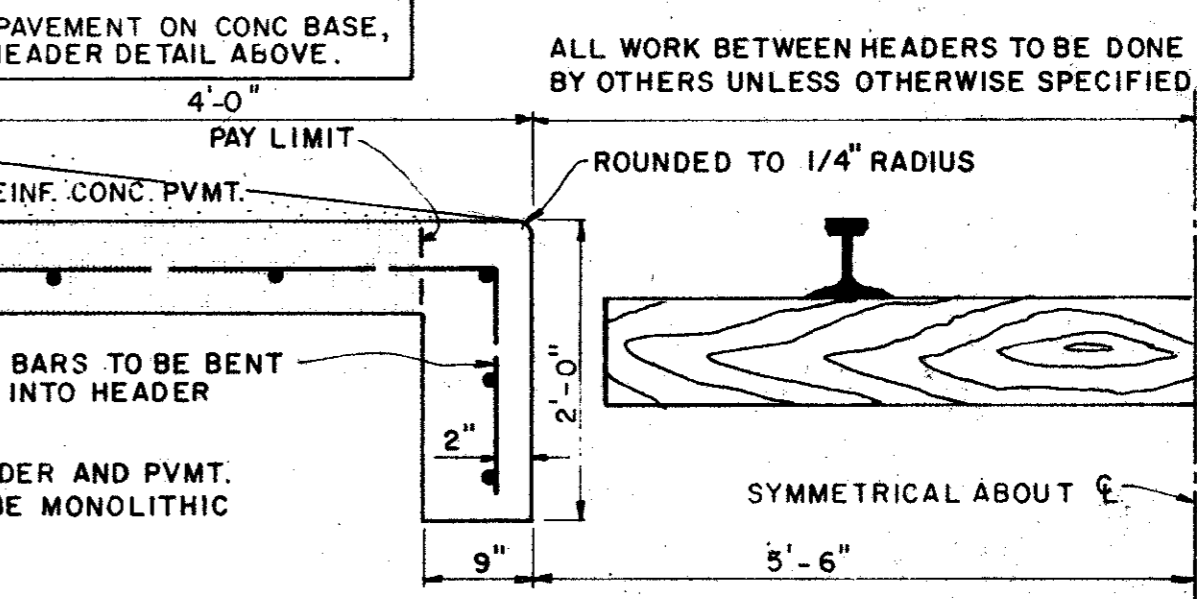
CONSTRUCTION JOINT
FOR 8" THICKNESS PAVEMENT OR BASE



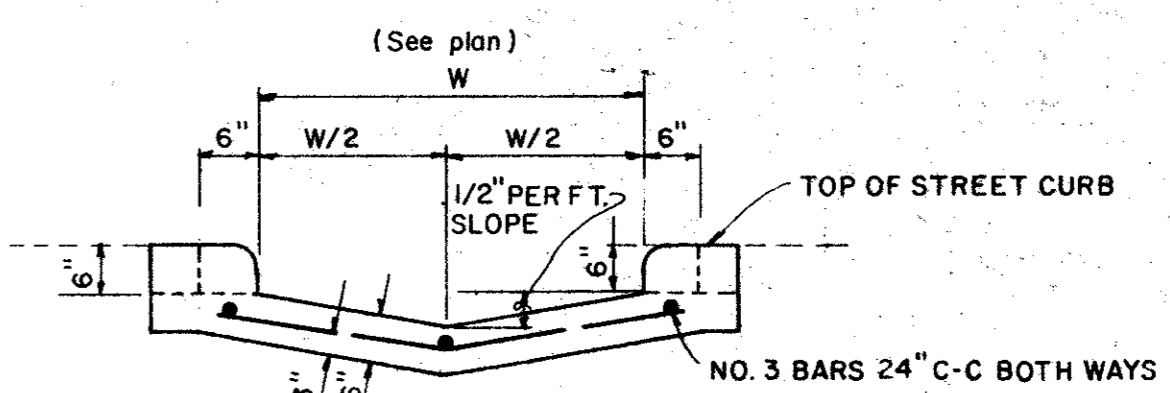
CONSTRUCTION JOINT
FOR 6" THICKNESS PAVEMENT OR BASE
IDENTICAL FOR STREETS AND ALLEYS EXCEPT ALLEY LONGITUDINAL REINFORCEMENT BARS



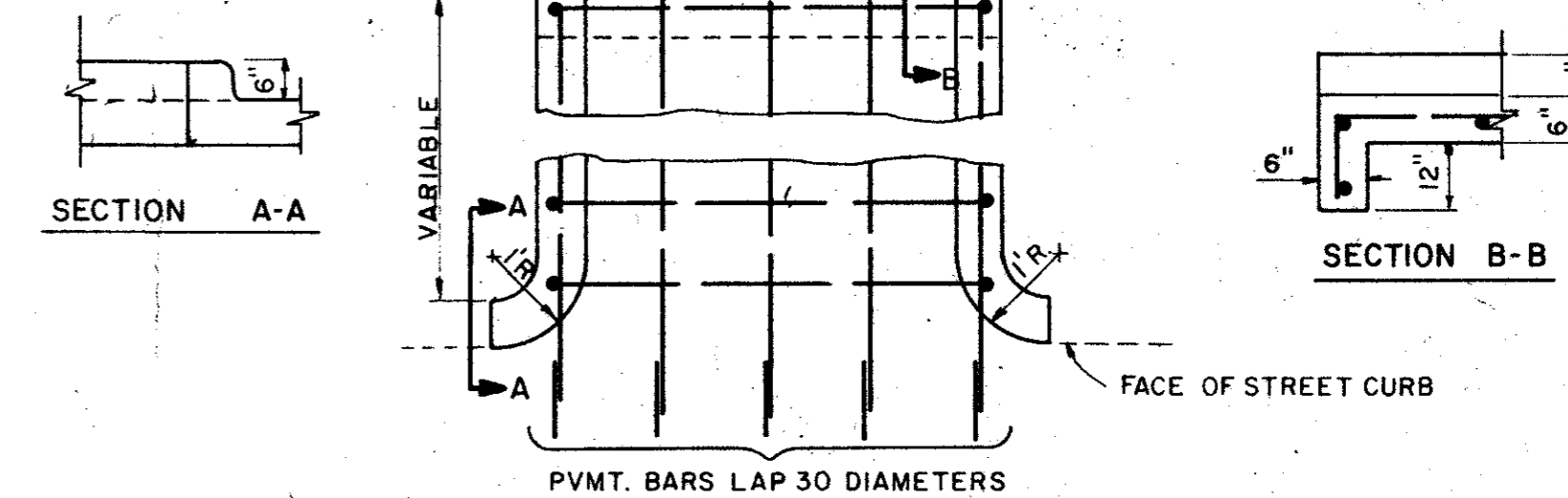
STREET HEADER
PAY ITEM 360.3



RAILROAD HEADER
PAY ITEM 360.3

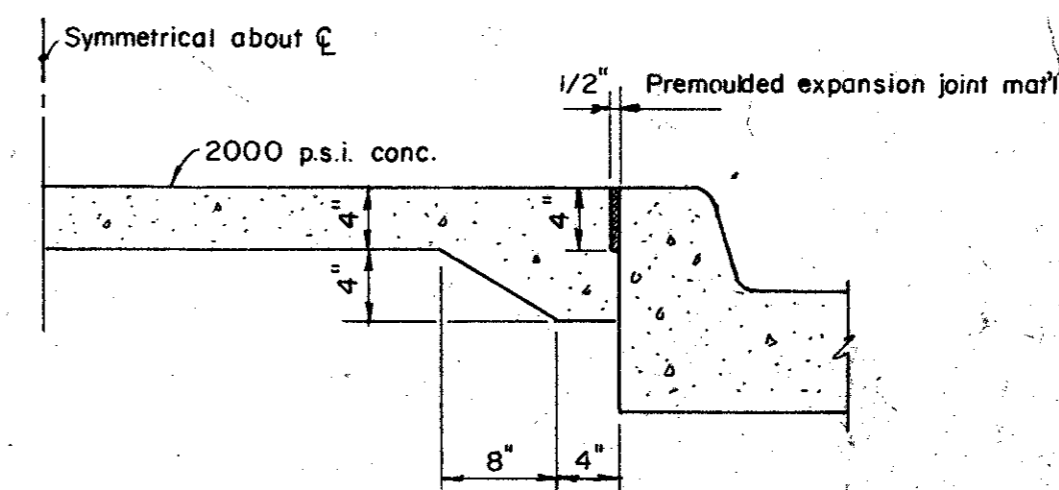


SECTION AT CURB FACE



PLAN

FLUME



NON-REINFORCED MEDIAN PAVEMENT
IN ALL AREAS LESS THAN 6' BC TO BC UNLESS OTHERWISE DIRECTED BY ENGINEER.

CITY OF ADDISON
DALLAS COUNTY, TEXAS
ARAPAHO ROAD/QUORUM DRIVE

PAVING DETAILS B

GINN, INC.
Consulting Engineers Dallas, Texas

DESIGNED: G.F. DRAWN: G.F. DATE: DECEMBER 1983 JOB No. J 122
APPROVED: H.G. CHECKED: G.F. SCALE: NONE SHEET 11 OF 22