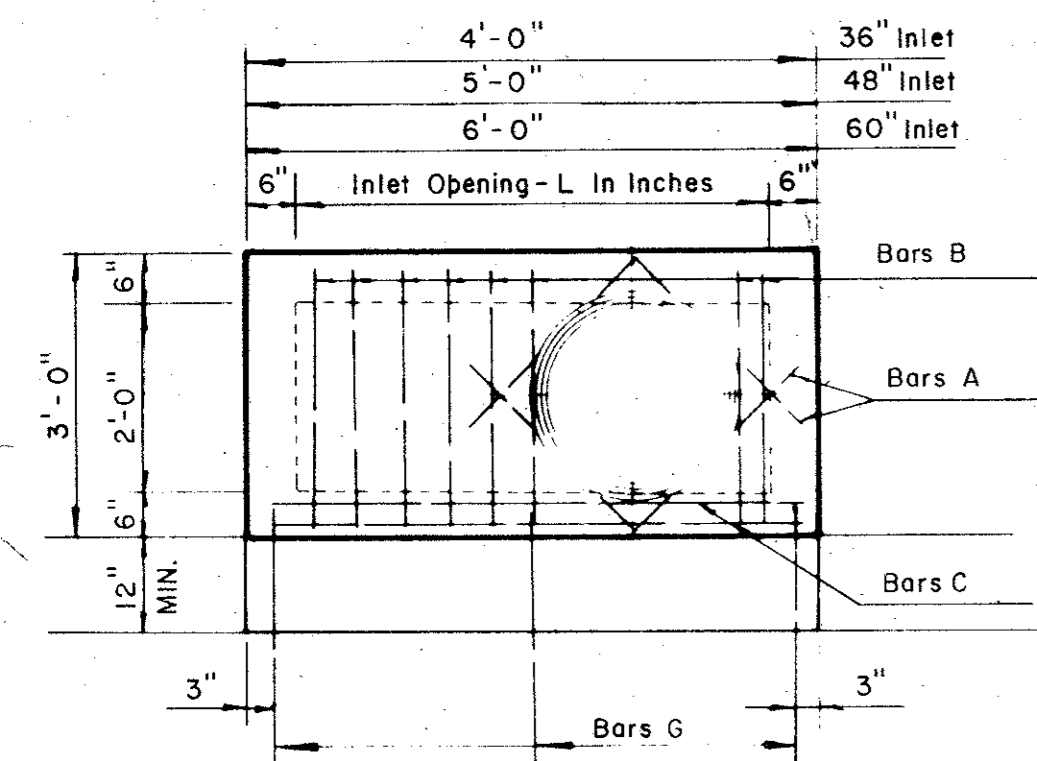
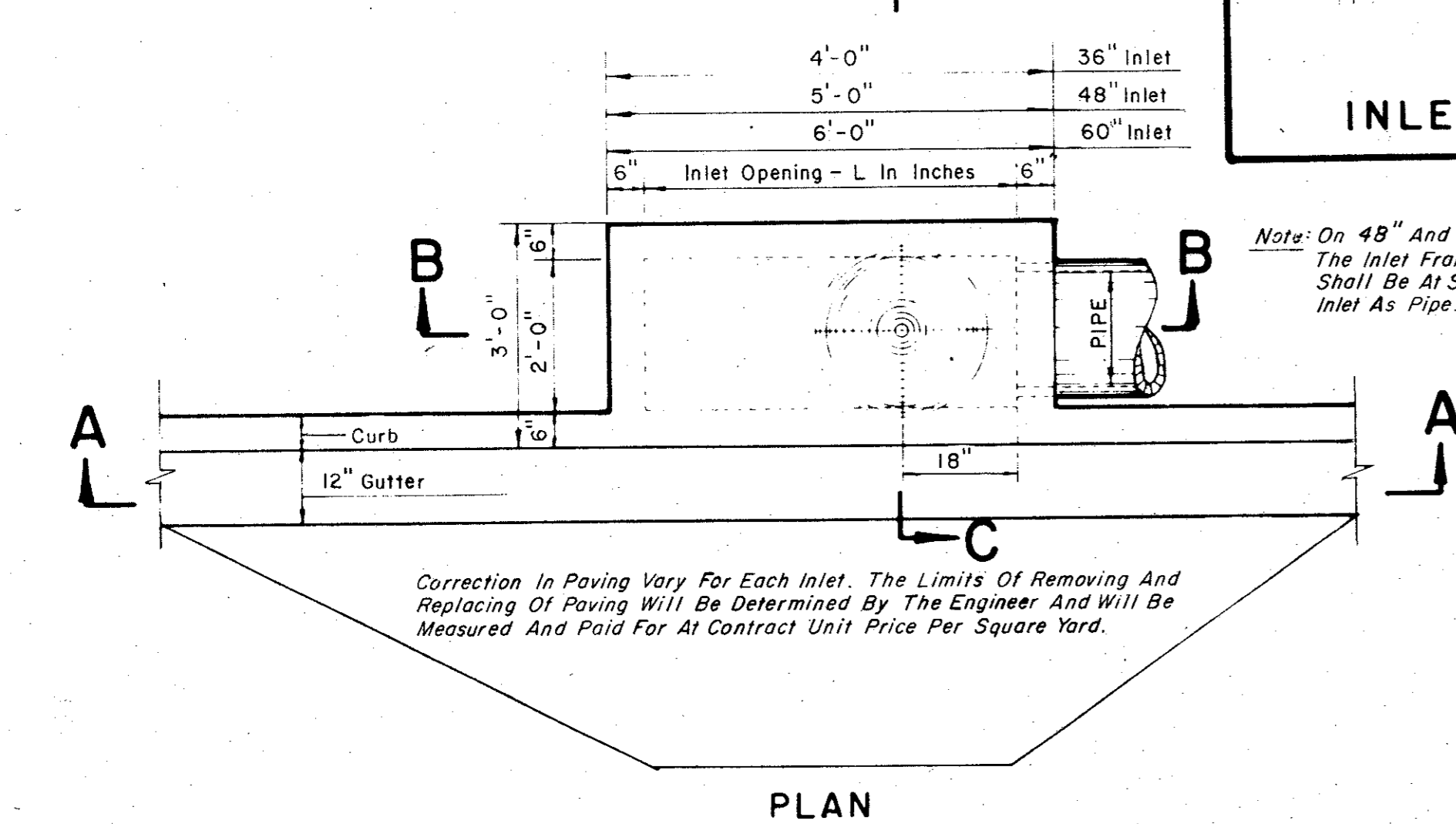


SECTION B-B

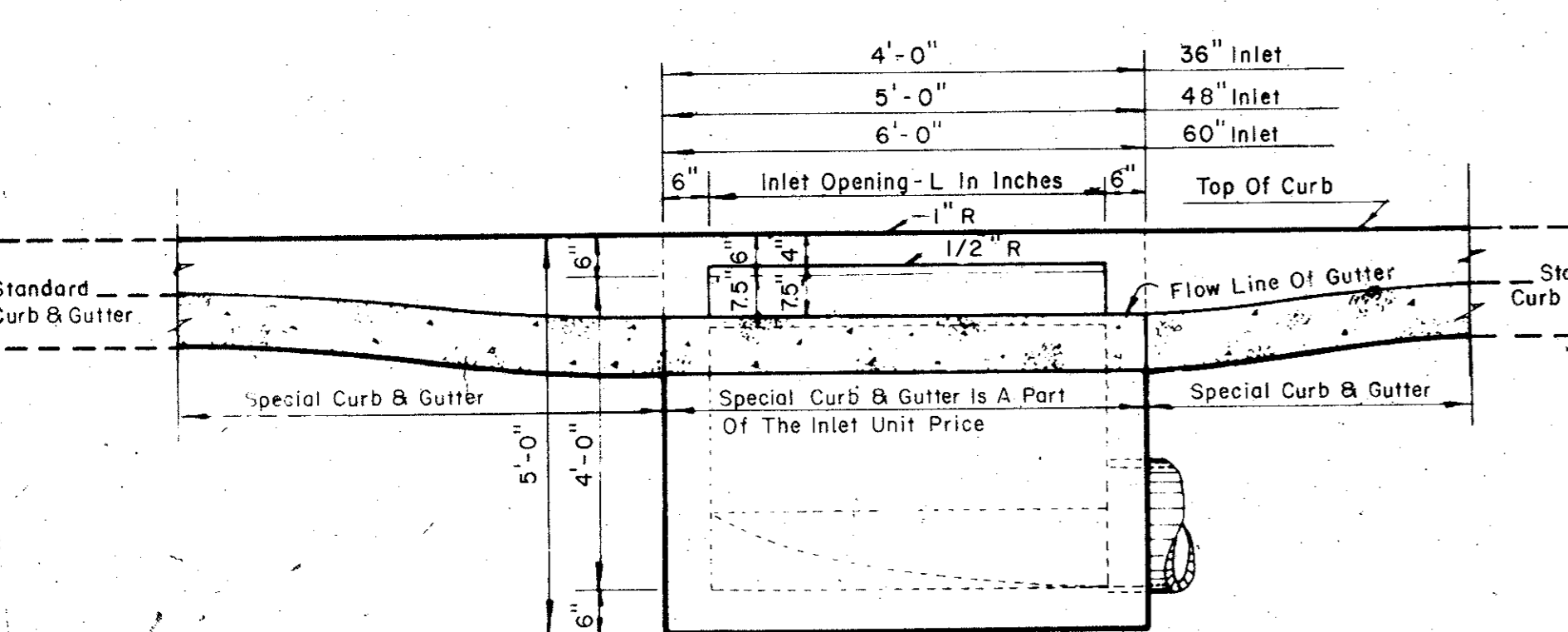
SECTION C-C



REINFORCING PLAN

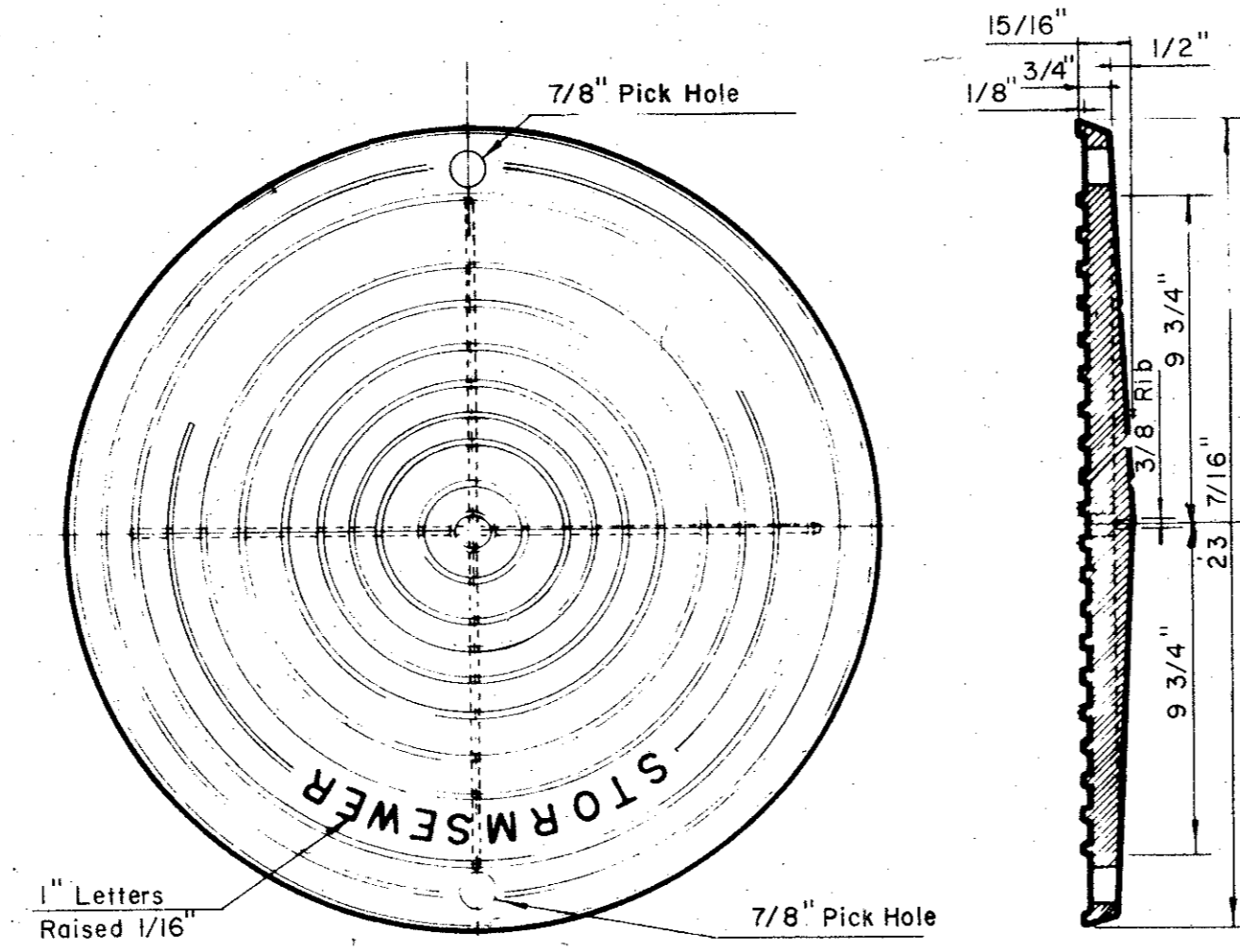


PLAN

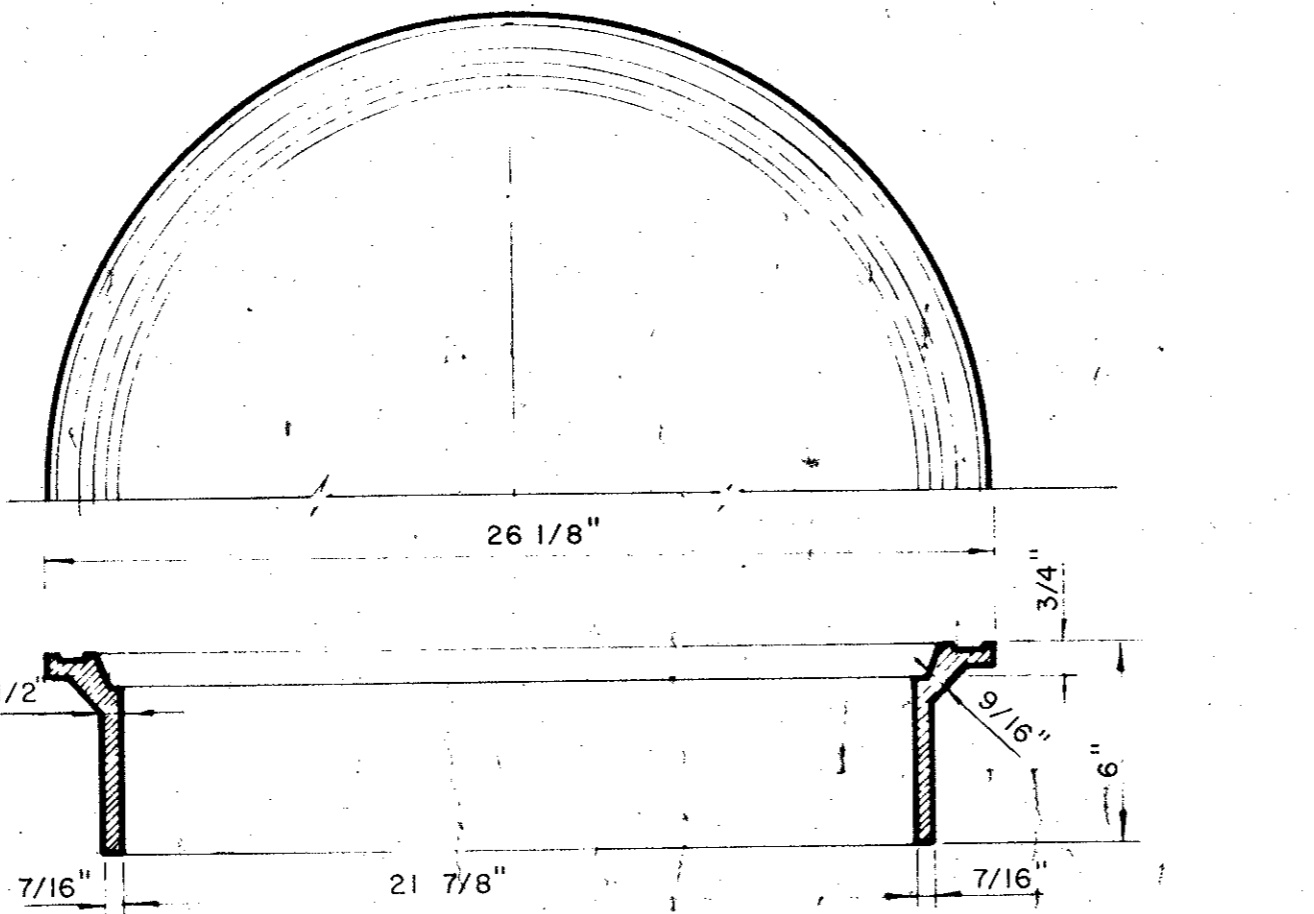


SECTION A-A

**36, 48 AND 60 INCH INLETS**



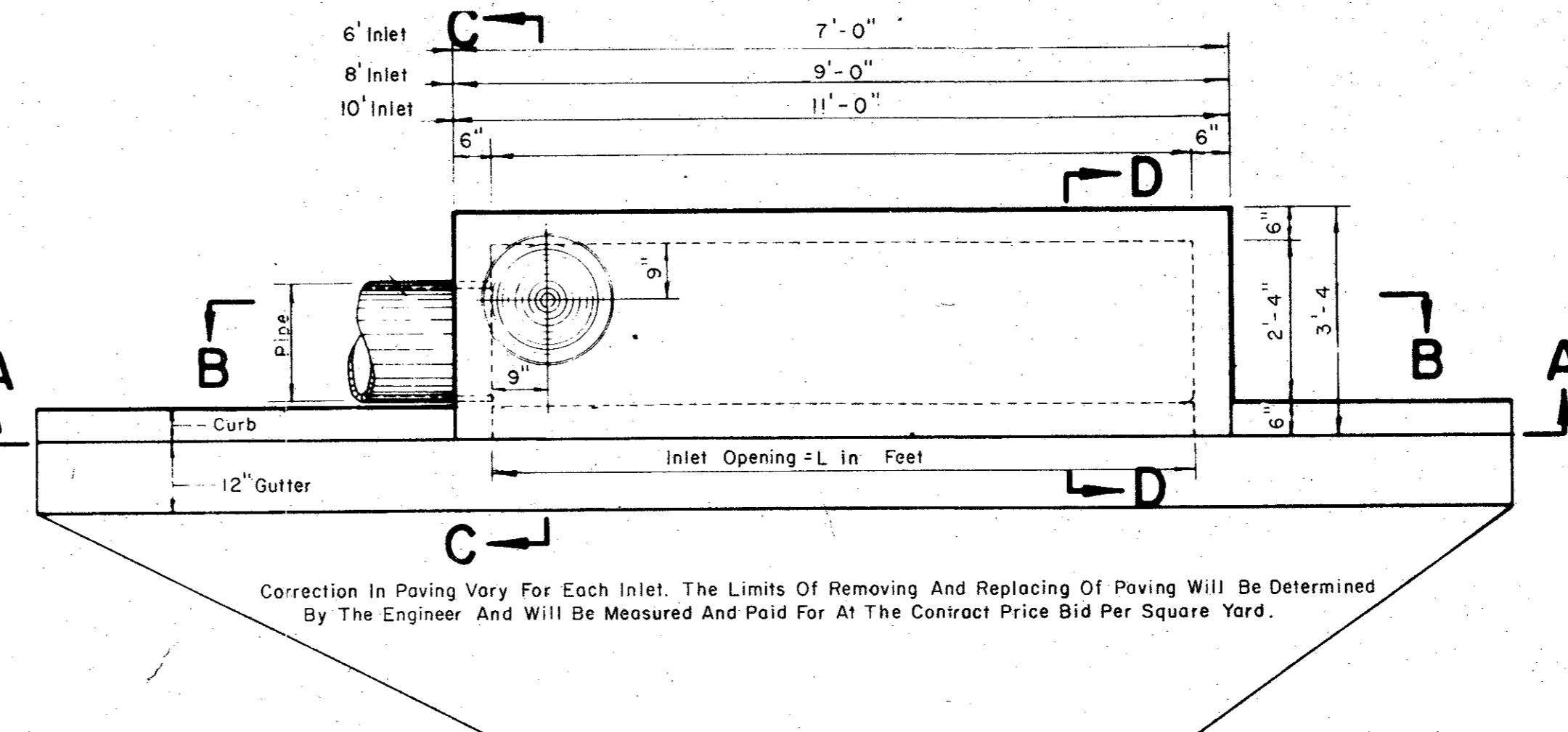
PLAN OF COVER



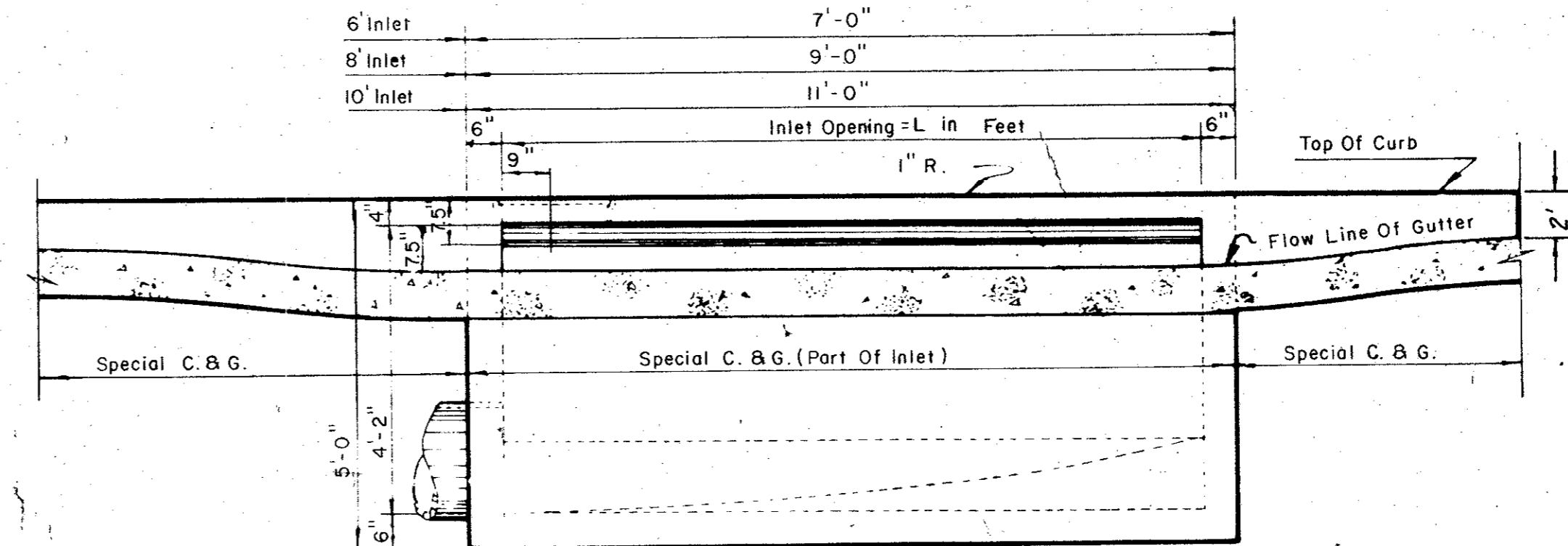
SECTION OF FRAME INLET FRAME AND COVER

Note: On 48" and 60" Inlets The Inlet Frame And Cover Shall Be At Same End Of Inlet As Pipe.

2'-6"	36" Inlet - #5-4 Required
2'-6"	48" Inlet - #5-4 Required
2'-6"	60" Inlet - #5-4 Required
<b>BARS A</b>	
2'-9"	36" Inlet - #5-4 Required
2'-9"	48" Inlet - #5-6 Required
2'-9"	60" Inlet - #5-8 Required
<b>BARS B</b>	
3'-9"	36" Inlet - #5-2 Required
4'-8"	48" Inlet - #5-2 Required
5'-9"	60" Inlet - #5-2 Required
<b>BARS C</b>	
3'-0"	36", 48" & 60" Inlets #3-3 Required
<b>BARS G</b>	



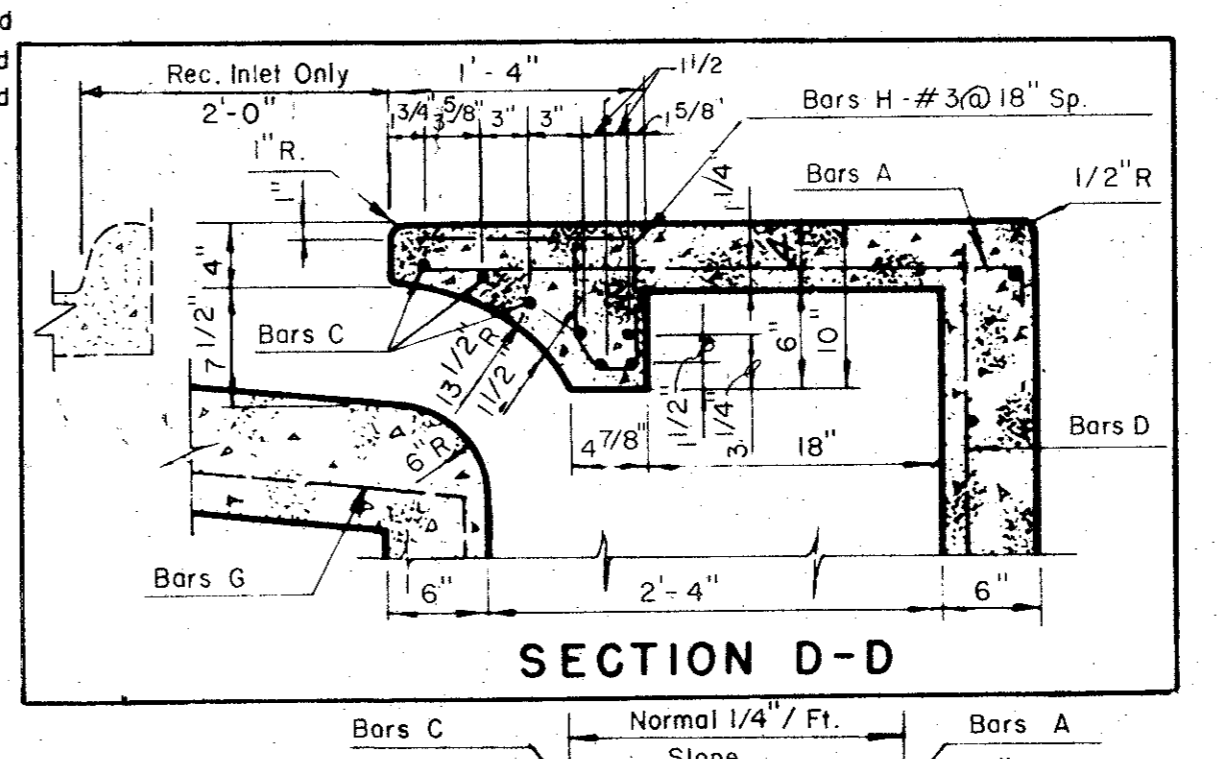
PLAN



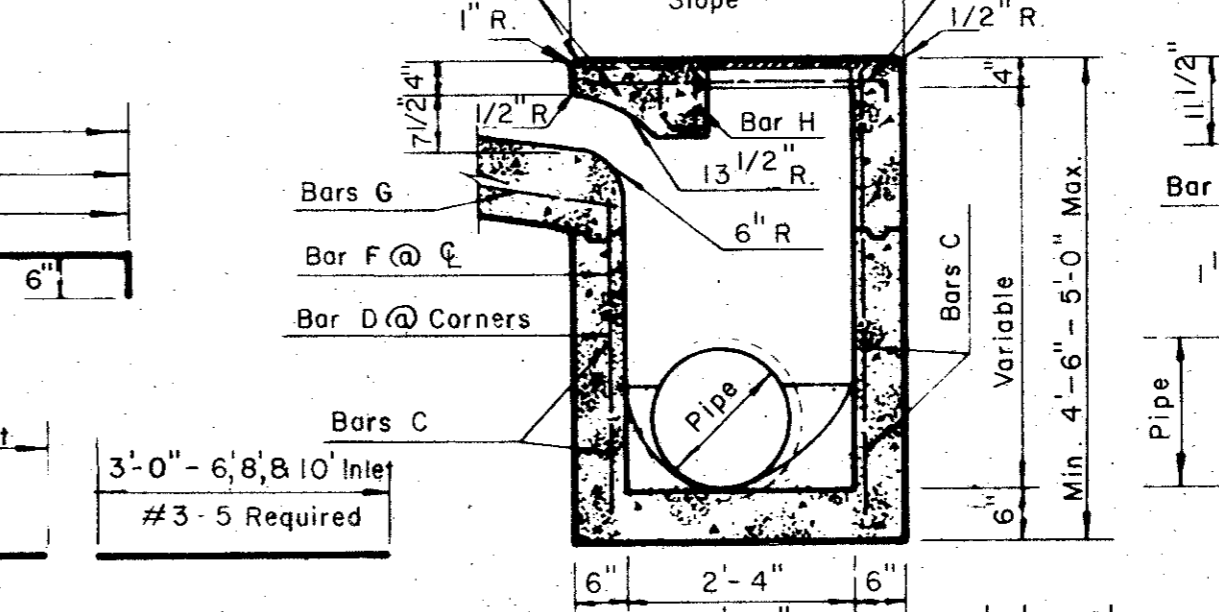
SECTION A-A

3'-0"	6" Inlet - #3-10 Required
3'-0"	8" Inlet - #3-13 Required
3'-0"	10" Inlet - #3-16 Required
<b>BARS H</b>	
4'-10"	6" Inlet - #3-1 Required
6'-10"	8" Inlet - #3-1 Required
8'-10"	10" Inlet - #3-1 Required
<b>BARS A</b>	
6'-8"	6" Inlet - #4-15 Required
8'-8"	8" Inlet - #4-15 Required
10'-8"	10" Inlet - #4-15 Required
<b>BARS B</b>	
4'-8", 6", 8" & 10" Inlet	#4-5 Required
3'-6", 6", 8" & 10" Inlet	#4-1 Required
3'-0", 6", 8", & 10" Inlet	#3-5 Required
<b>BARS C</b>	
<b>BARS D</b>	
<b>BARS F</b>	
<b>BARS G</b>	

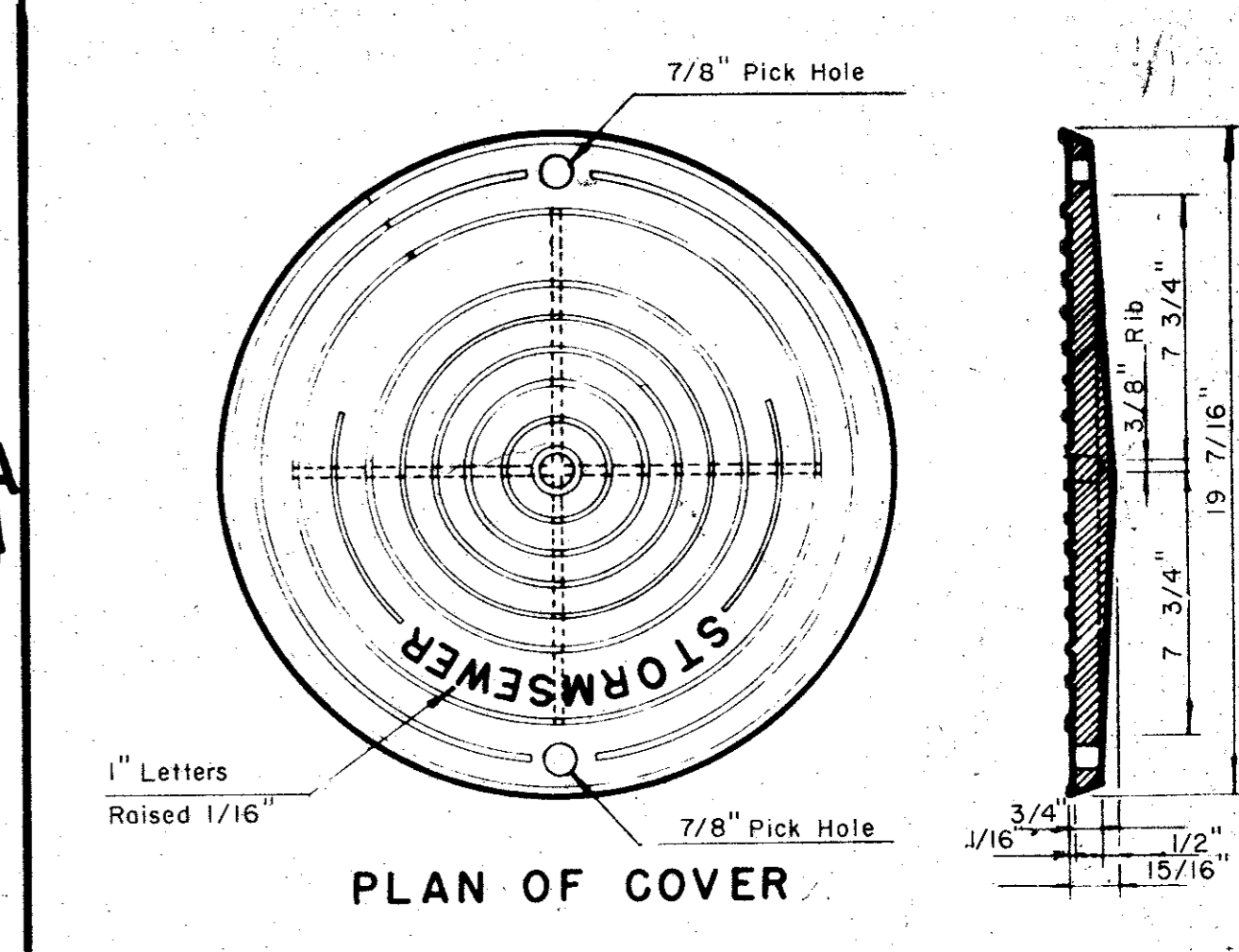
2'-6"	36" Inlet - #5-4 Required
2'-6"	48" Inlet - #5-4 Required
2'-6"	60" Inlet - #5-4 Required
<b>BARS A</b>	
2'-9"	36" Inlet - #5-4 Required
2'-9"	48" Inlet - #5-6 Required
2'-9"	60" Inlet - #5-8 Required
<b>BARS B</b>	
3'-9"	36" Inlet - #5-2 Required
4'-8"	48" Inlet - #5-2 Required
5'-9"	60" Inlet - #5-2 Required
<b>BARS C</b>	
3'-0"	36", 48" & 60" Inlets #3-3 Required
<b>BARS G</b>	



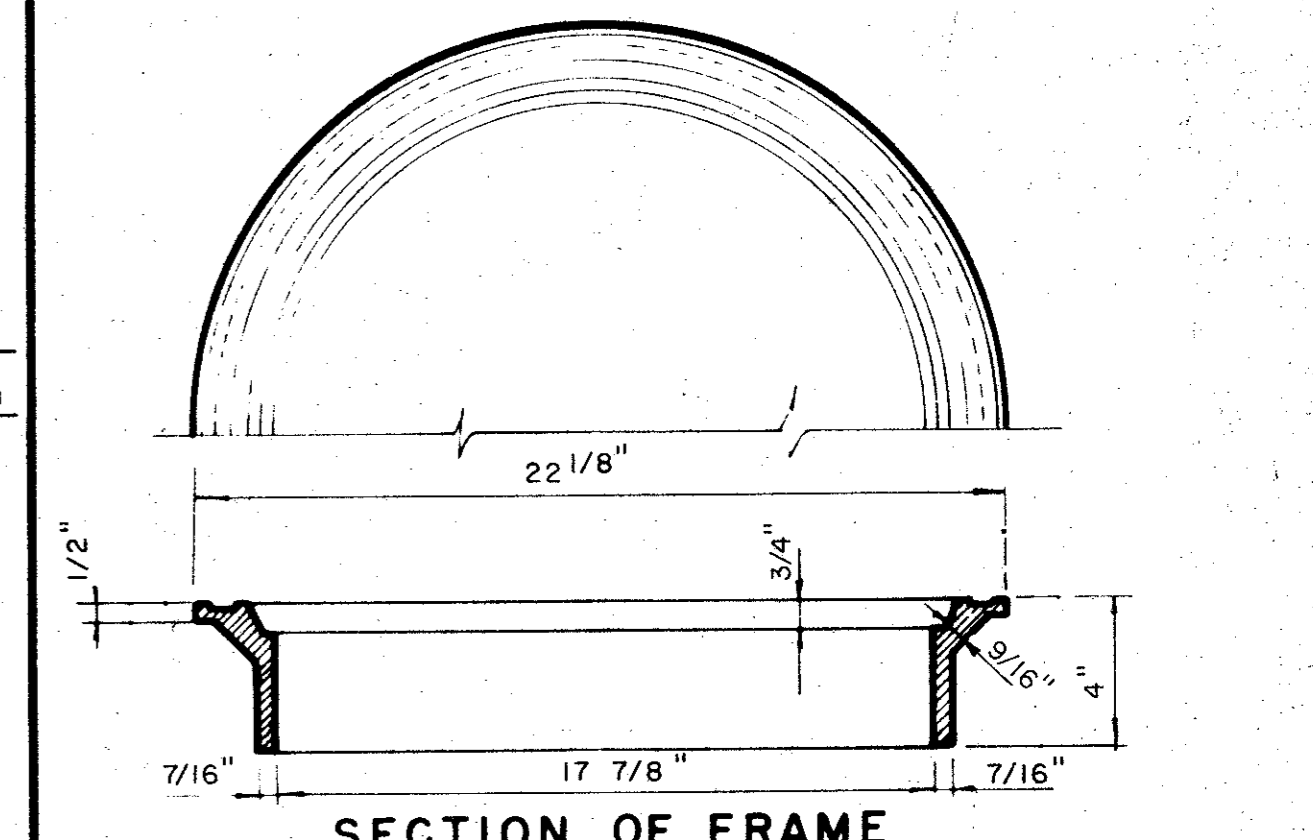
SECTION D-D



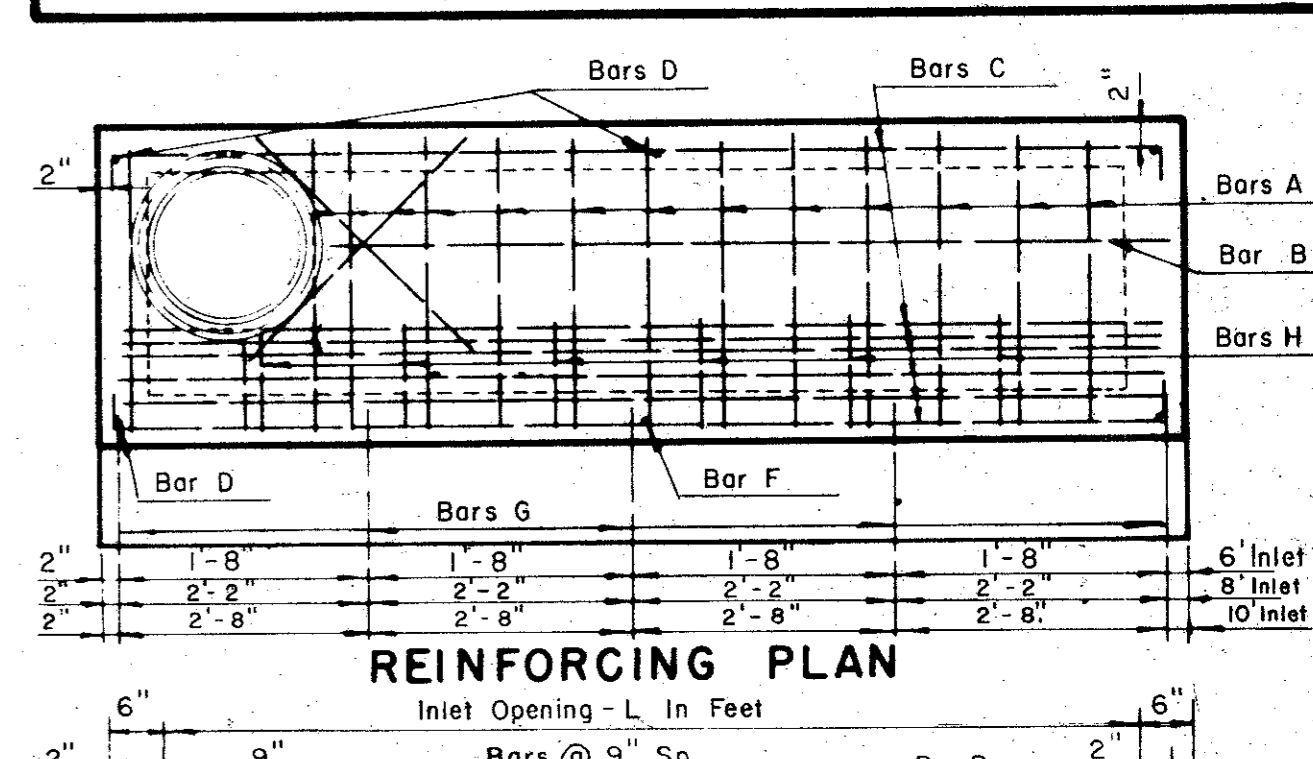
SECTION C-C



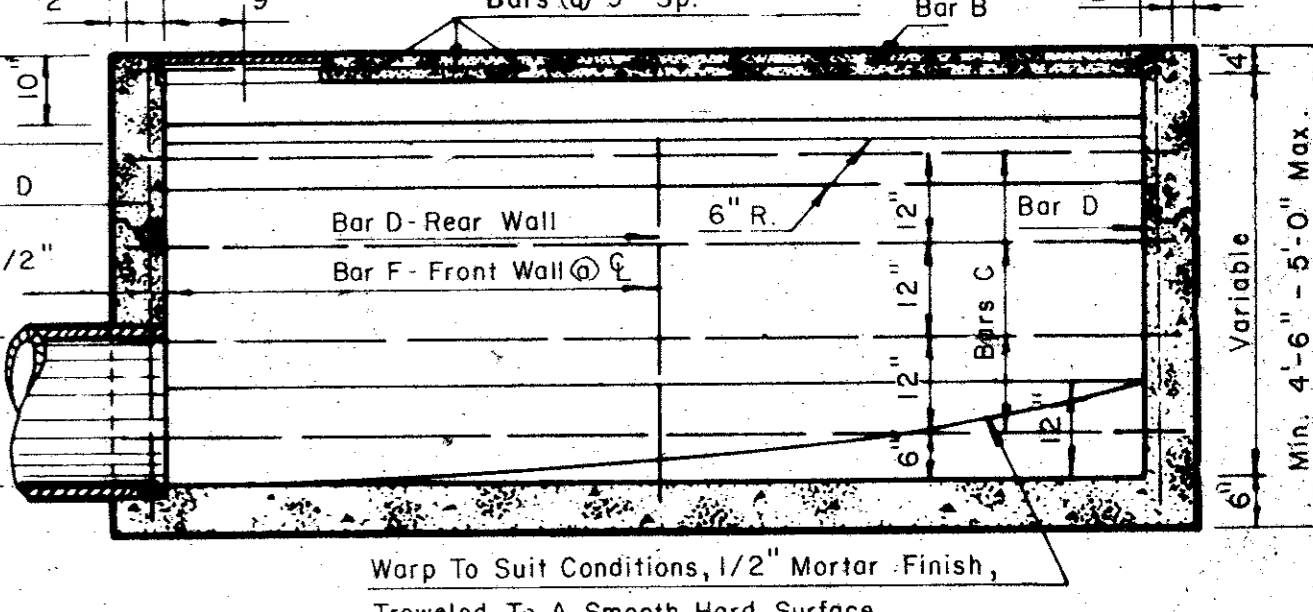
PLAN OF COVER



SECTION OF FRAME INLET FRAME AND COVER



REINFORCING PLAN



SECTION B-B

**NOTES:**

- Concrete Shall Have A Min. Compressive Of 3,000 P.S.I. At 28 Days.
- Lateral Pipe May Enter Inlet At Any Location. (Field Locate)
- The 12" Gutter In Front Of Inlet Is A Part Of The Inlet And Shall Be Built With The Inlet.
- Top Of Inlet Slope Shall Conform To Adjacent Parkway Normal 1/4" Ft. Slope.

**6, 8 AND 10 FOOT INLETS**

**STANDARD CURB INLET**  
36, 48 & 60 INCH INLET  
6, 8 & 10 FOOT INLET

CITY OF ADDISON  
DALLAS COUNTY, TEXAS  
ARAPAHO ROAD/QUORUM DRIVE

**DRAINAGE DETAILS A**

GINN, INC.

Consulting Engineers - Dallas, Texas

DESIGNED - H.B.J. DRAWN - S.M.M. DATE - DECEMBER, 1965 J 177  
APPROVED - H.W.G. CHECKED - G.F. SCALE - NONE SHEET 19 OF 22