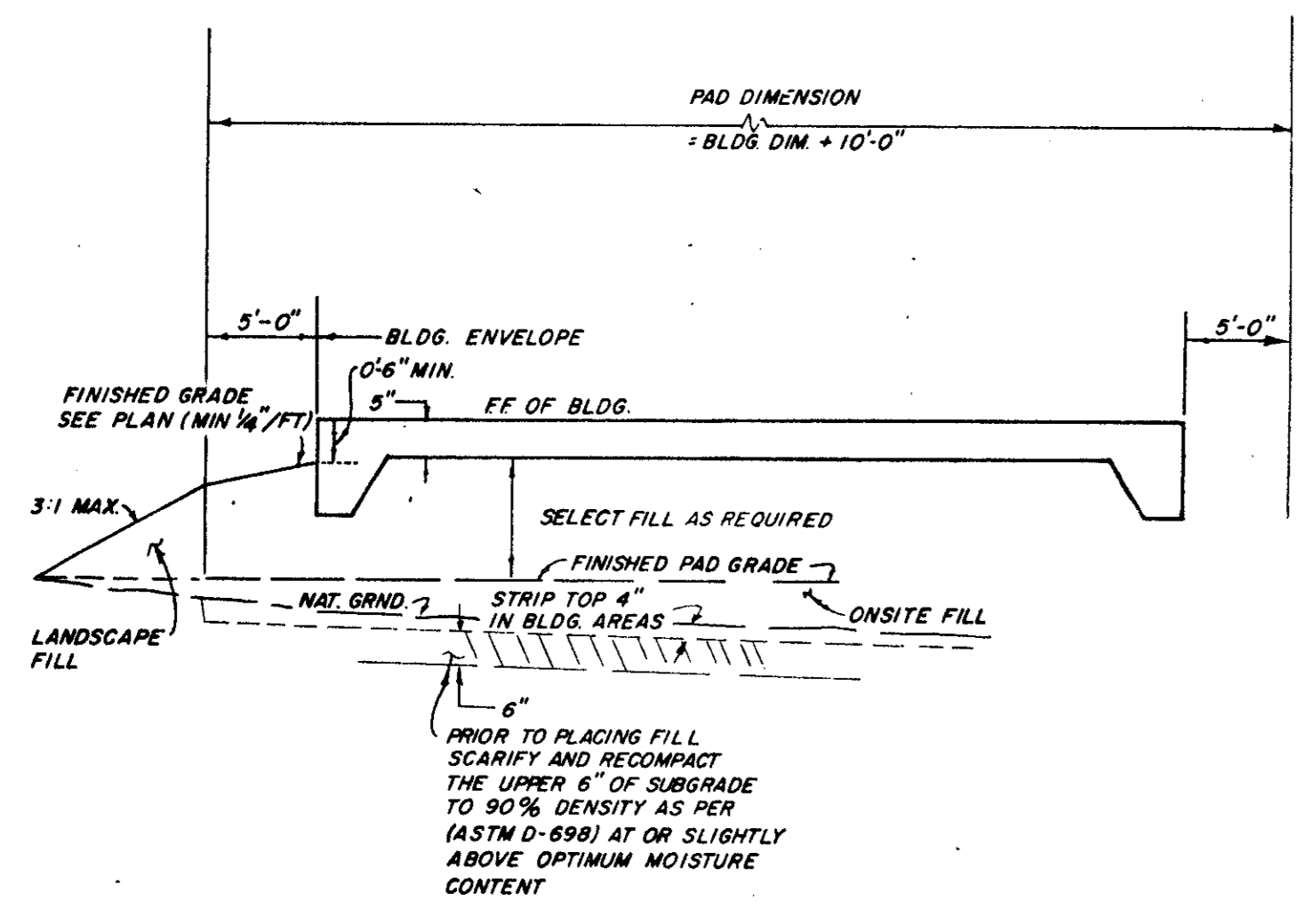
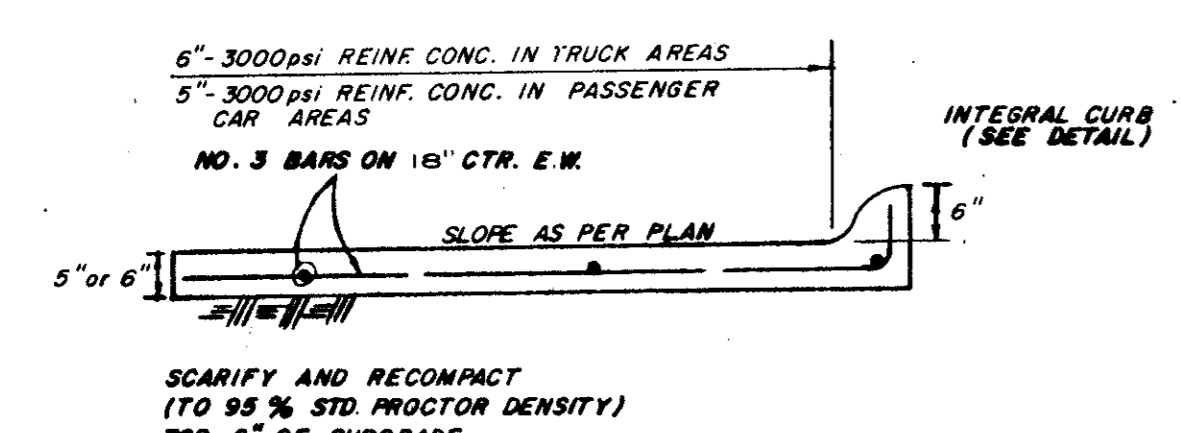


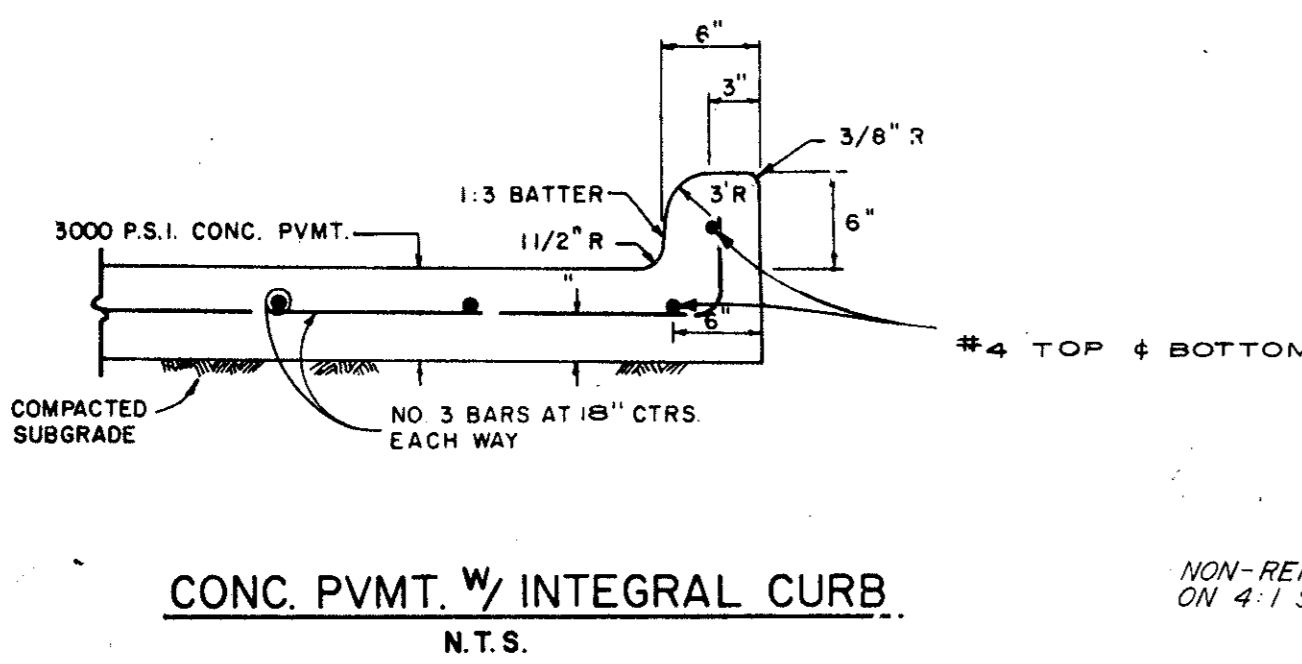
DETAIL SHOWING NEW CONCRETE PAVEMENT TO ASPHALT PAVEMENT CONNECTION
N.T.S.
DETAIL "A"



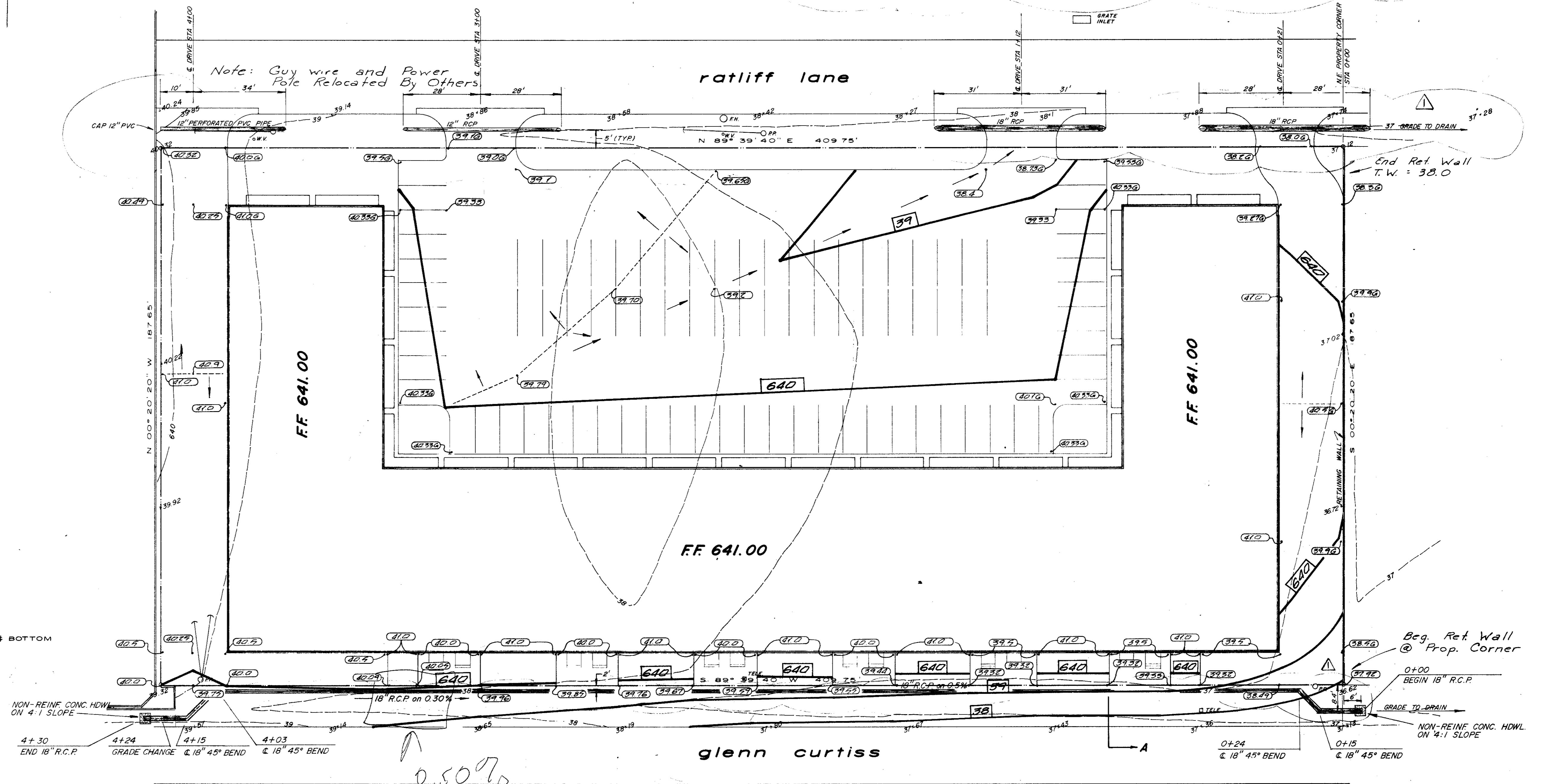
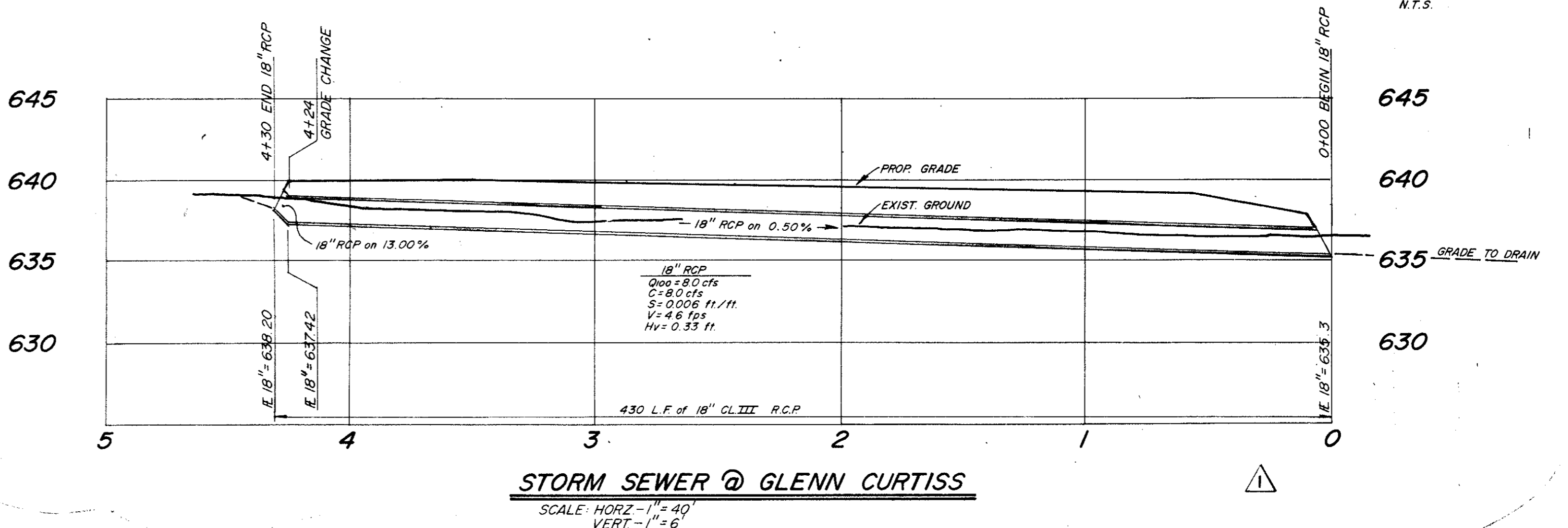
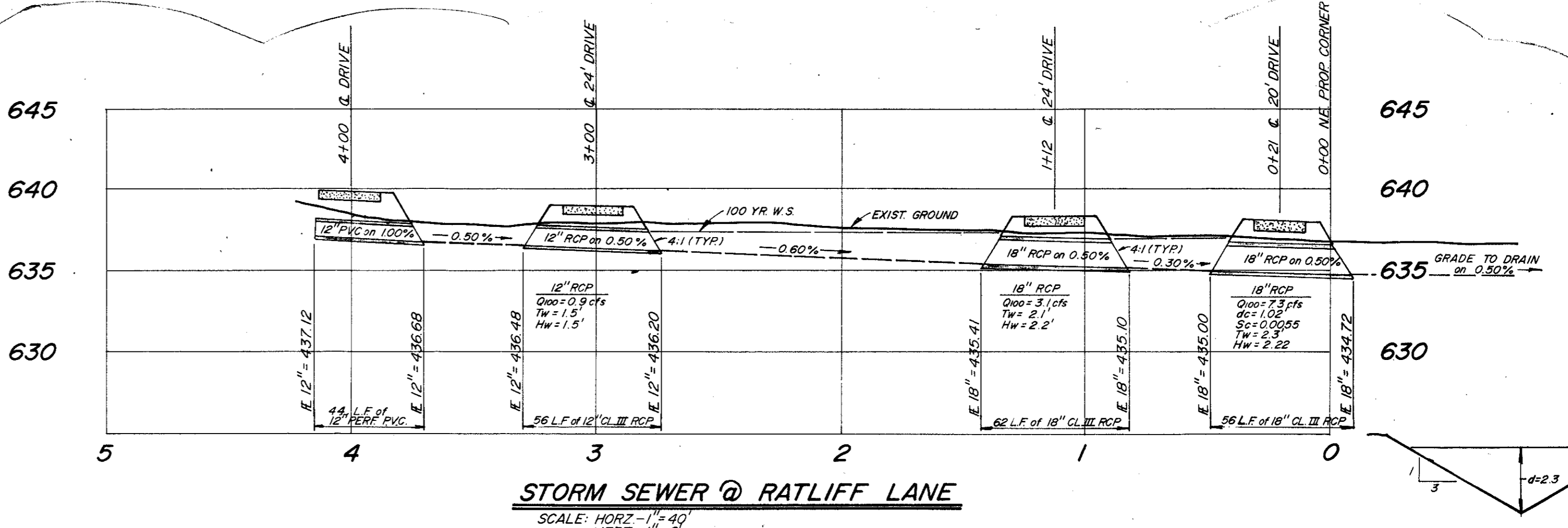
PAD SECTION
N.T.S.
NOTE: REFER TO SOIL REPORT



PAVING SECTION
N.T.S.
NOTE: REFER TO SOIL REPORT



CONC. PVMT. w/ INTEGRAL CURB
N.T.S.



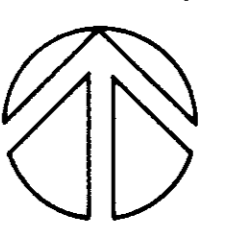
LEGEND

37+65	EXISTING SPOT ELEVATION
36.7	PROPOSED SPOT ELEVATION
---	EXISTING CONTOUR
---	PROPOSED CONTOUR
---	HIGH POINT
---	DIRECTION OF FLOW

BENCHMARK:
SQUARE CUT ON INLET S.W. CORNER
OF INTERSECTION OF RATLIFF LANE
AND ADDISON ROAD
ELEV - 637.23

Note: All Power Poles and Telephone Pedestals in Conflict with Drives and Paving to be Relocated By Others.

1 site plan
SCALE: 1" = 20'-0"



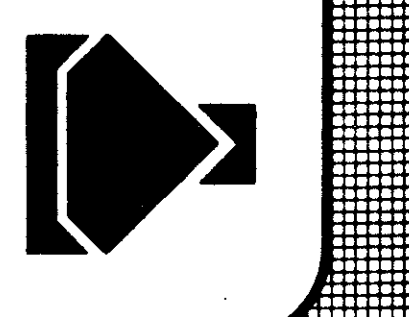
GRADING PLAN

REVISE STORM SEWER (GLENN CURTISS)
ADD STORM SEWER UNDER DRIVES (RATLIFF LANE)
DATE: 9-5-84

W. Wilson
6-15-84

B. JACK R. DAVIS
associates, inc.
consulting civil engineers & surveyors
2902 Carlisle Street
Dallas, Texas 75204

AIRPORT PLAZA
T.F. Stone Companies, Inc.



job number: 64-03
date: 8-23-84
revisions:

64-03 - 1