

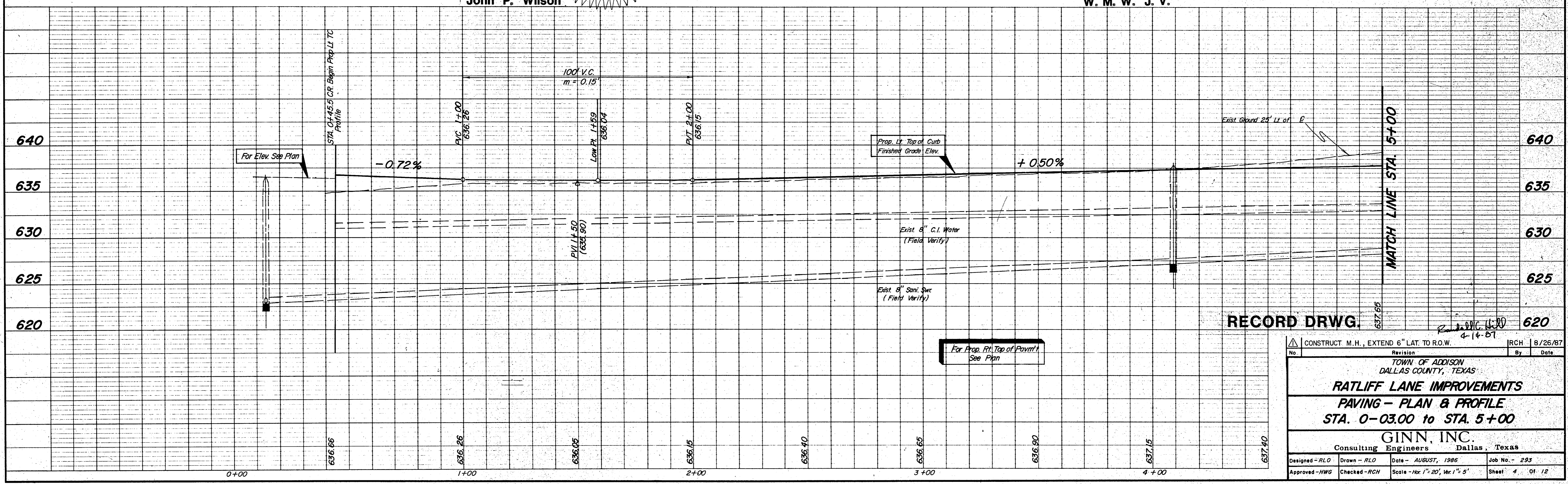
**LEGEND**

- 8" Reinf. Conc.
- 6" Reinf. Conc.
- H.M.A.C.P.
- 636.00 TC - Typ.
- 636.00 Gut - Typ.

B.M. □ on the Concrete Patch of the Wilson Company at 16301 Addison Road. Elev. 638.46

John P. Wilson

W. M. W. J. V.



RECORD DRWG.

CONSTRUCT M.H., EXTEND 6" LAT. TO R.O.W.		By	Date
Revision			
TOWN OF ADDISON DALLAS COUNTY, TEXAS			
<b>RATLIFF LANE IMPROVEMENTS</b>			
<b>PAVING - PLAN &amp; PROFILE</b>			
<b>STA. 0-03.00 to STA. 5+00</b>			
GINN, INC. Consulting Engineers, Dallas, Texas			
Designed - RLO	Drawn - RLO	Date - AUGUST, 1986	Job No. - 293
Approved - HWG	Checked - RCH	Scale - Hor 1" = 20', Ver 1" = 5'	Sheet 4 of 12