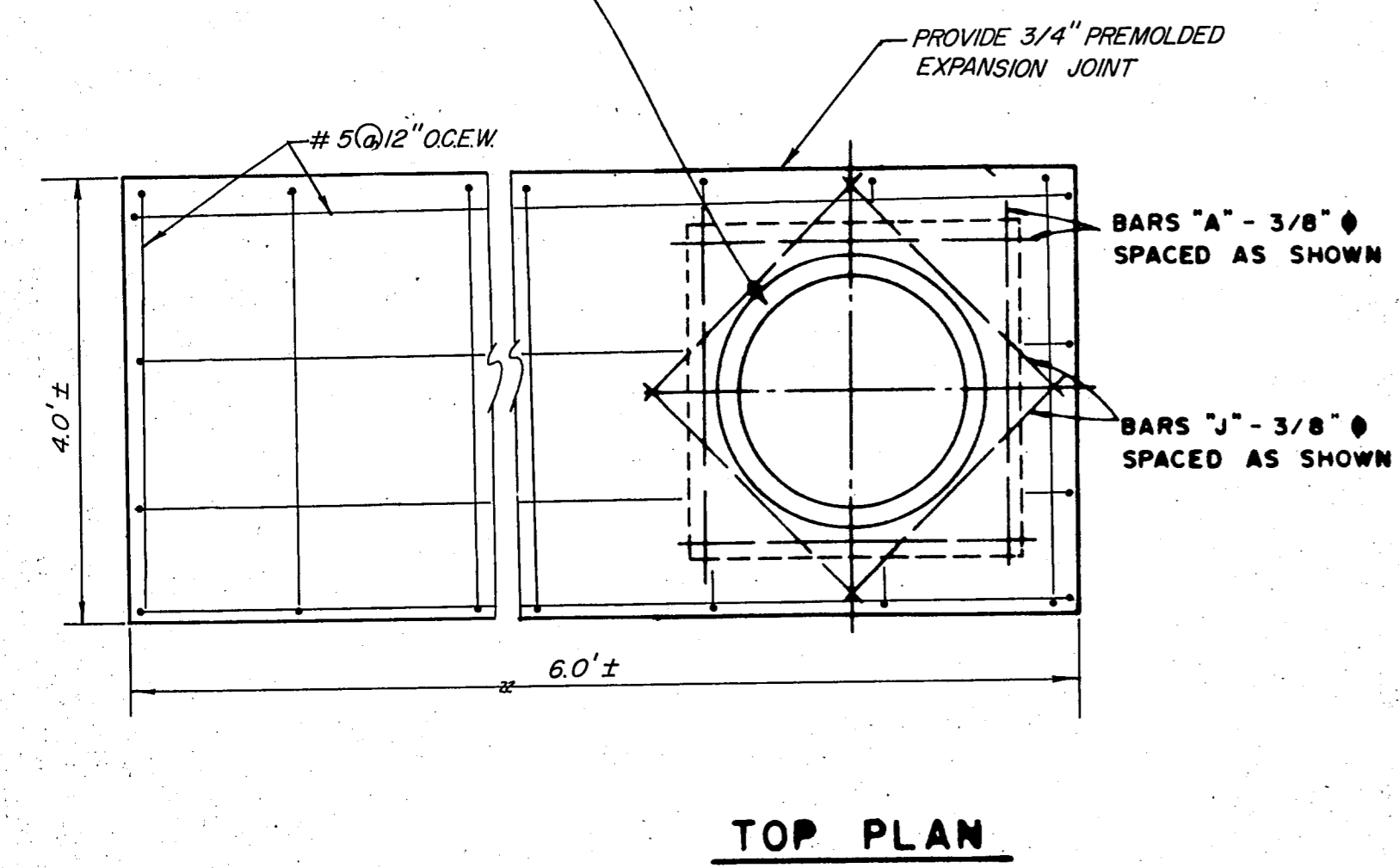
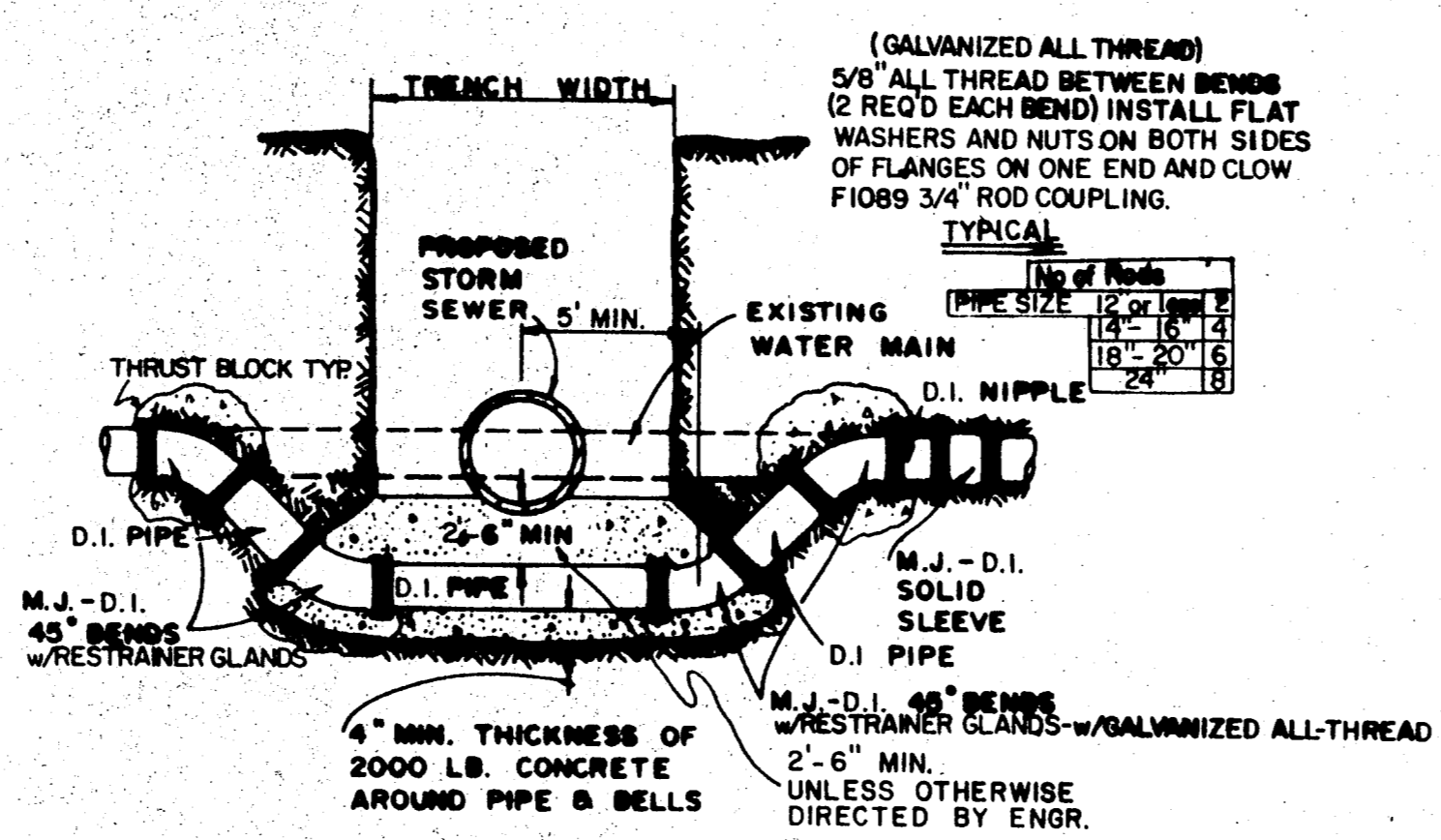


AS BUILT, CONSTRUCT CITY OF ADDISON STANDARD MANHOLE

NOTE: FRAME AND COVER SHALL BE BASS & HAYS PATTERN NO. 380-24 OR EQUAL AND SHALL BE OF GRAY CAST IRON CONFORMING TO A.S.T.M. SPEC. A-48 FOR CLASS 30 CAST IRON. EXCEPT INLET (Q) STA. 2+67 (2)

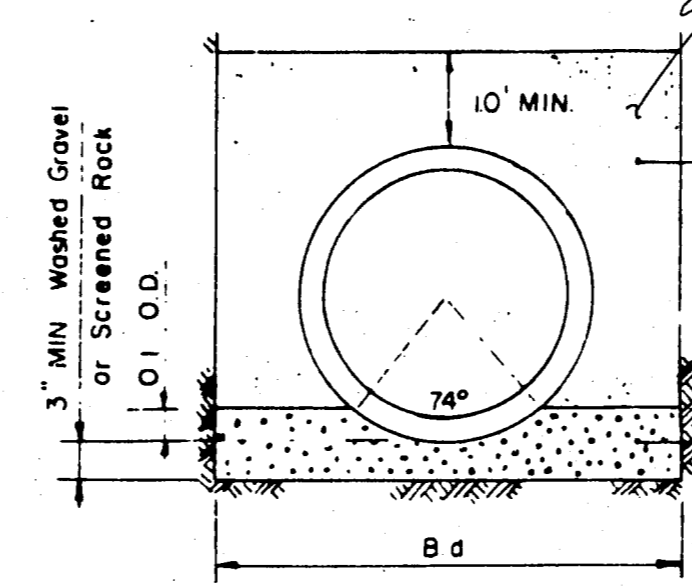


TOP PLAN



DETAIL FOR WATER MAIN LOWERING

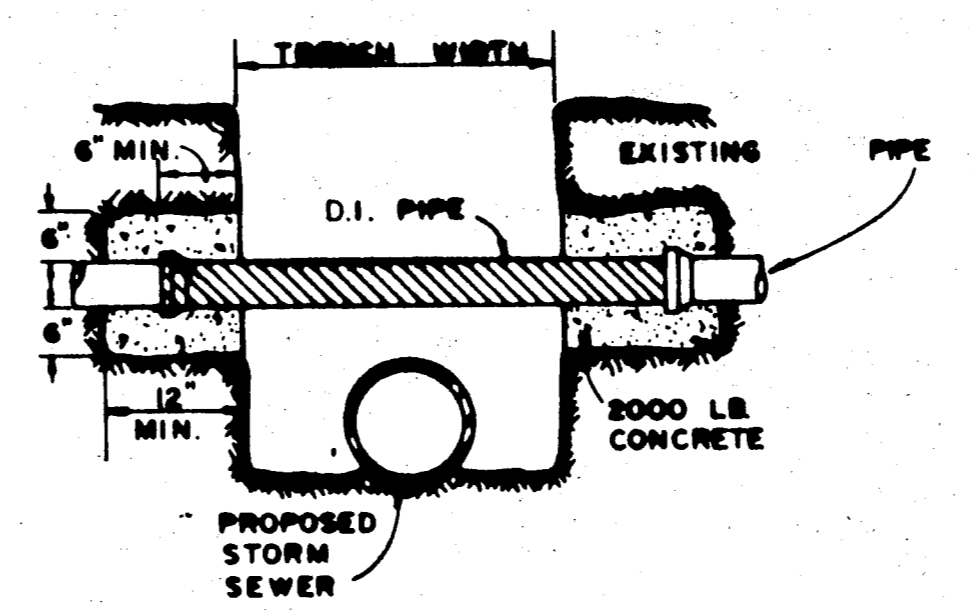
STORM SEWER EMBEDMENT					
PIPE DIAM.		B d	CU. YDS. Per 100 L.F.		
I. D.	O. D.		GRAVEL	GRANULAR MATERIAL	
15"	19"	39"	4.53	22.28	
18"	22.5"	42"	5.13	25.15	
21"	26"	45"	5.76	28.03	
24"	29.5"	48"	6.42	30.94	
27"	33"	51"	7.11	33.86	
30"	37"	54"	7.85	36.72	
33"	40.5"	57"	8.59	39.64	
36"	44"	60"	9.36	42.58	
39"	47.5"	63"	10.16	45.53	
42"	51"	66"	10.99	48.51	
48"	58"	72"	12.72	54.51	
54"	65"	78"	14.57	60.57	
60"	72"	84"	16.53	66.71	
66"	79"	90"	18.60	72.92	
72"	86"	96"	20.79	79.19	
78"	93"	102"	23.08	85.53	
84"	100"	108"	25.49	91.95	
90"	108.5"	115"	28.47	99.02	
96"	114"	120"	30.64	104.98	
102"	122.5"	129"	34.66	118.41	



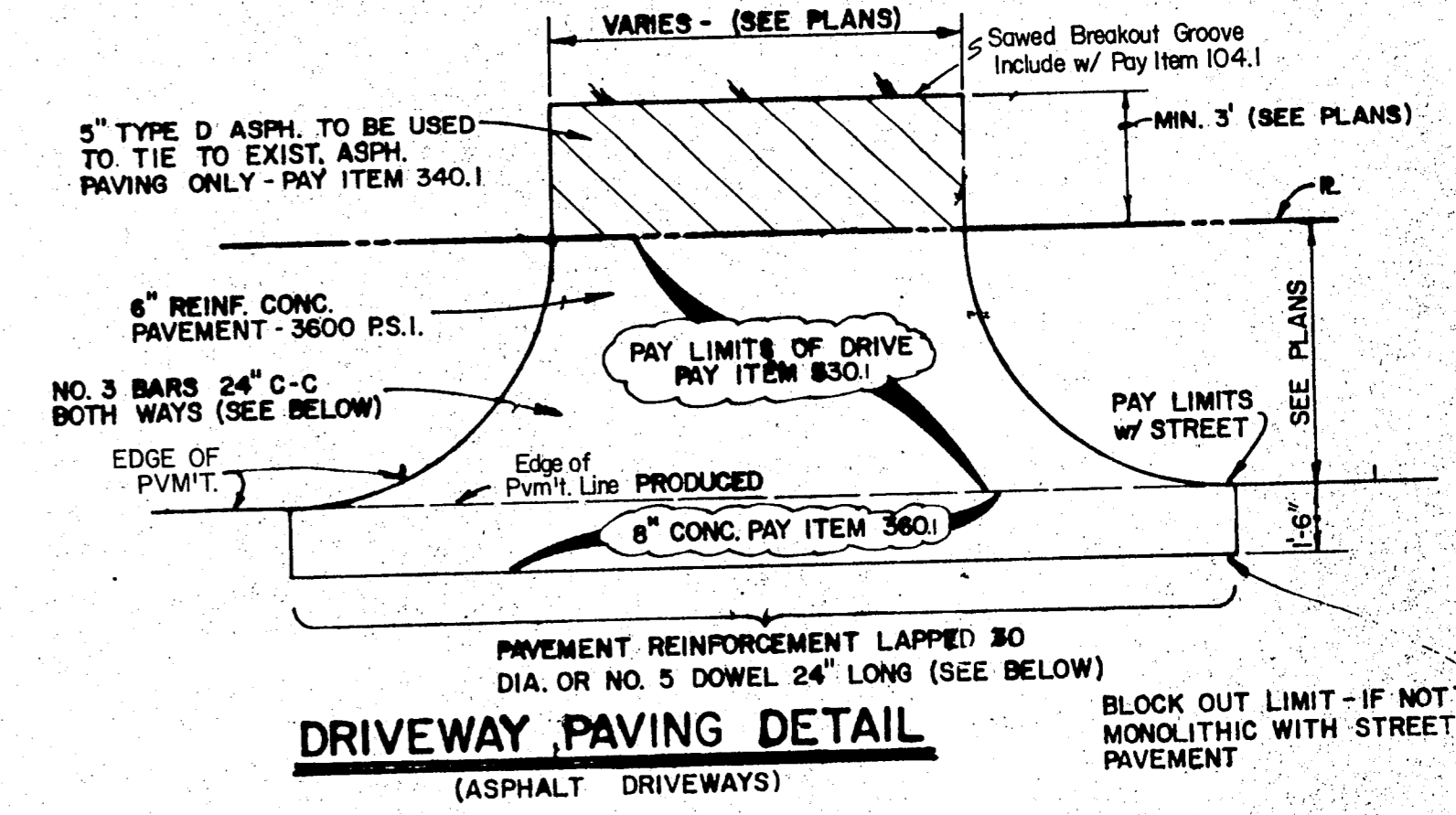
STORM SEWER EMBEDMENT

Material above pipe shall be placed in 8" lifts & compacted to 92% min. std. proctor density, at optimum moisture.

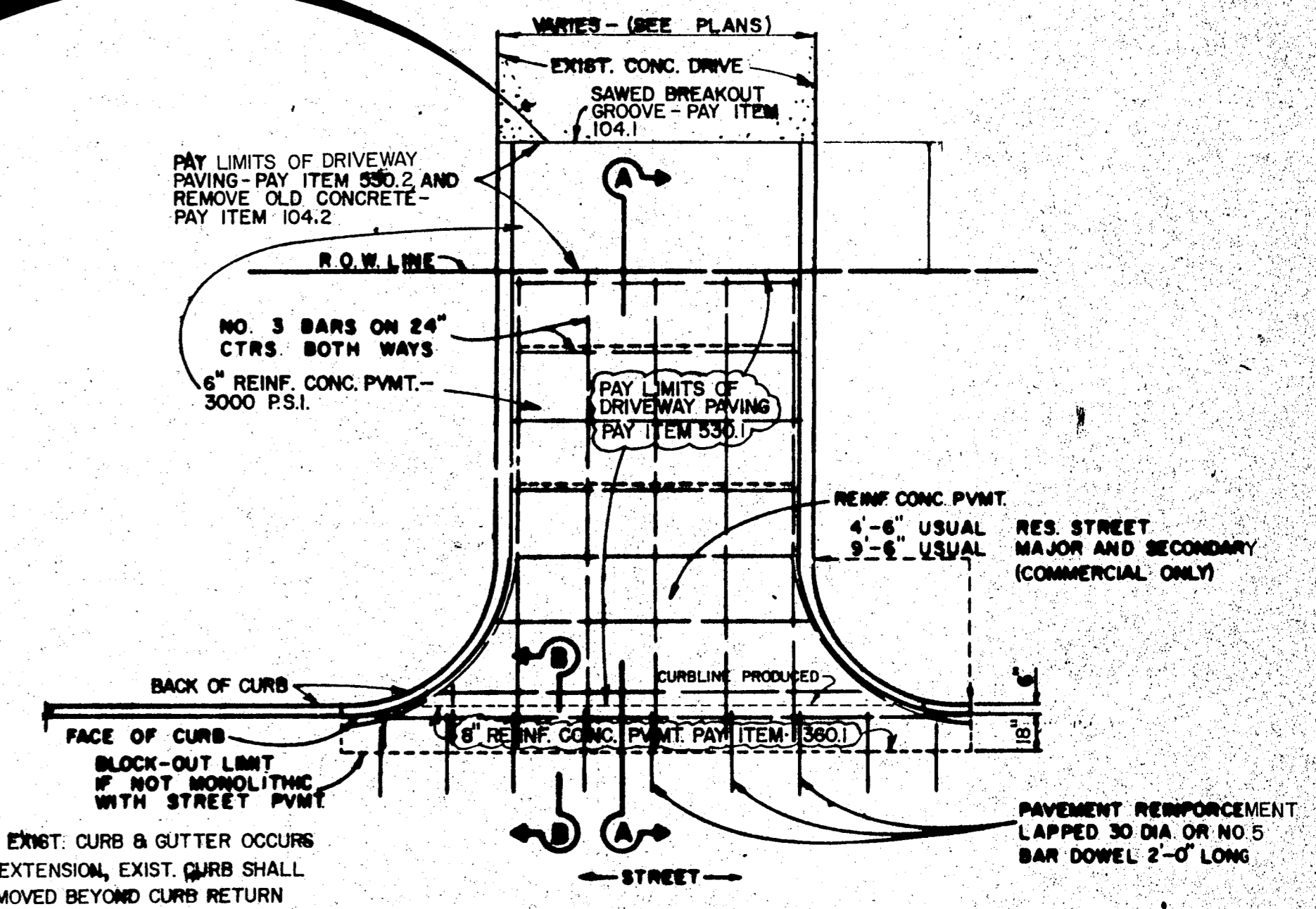
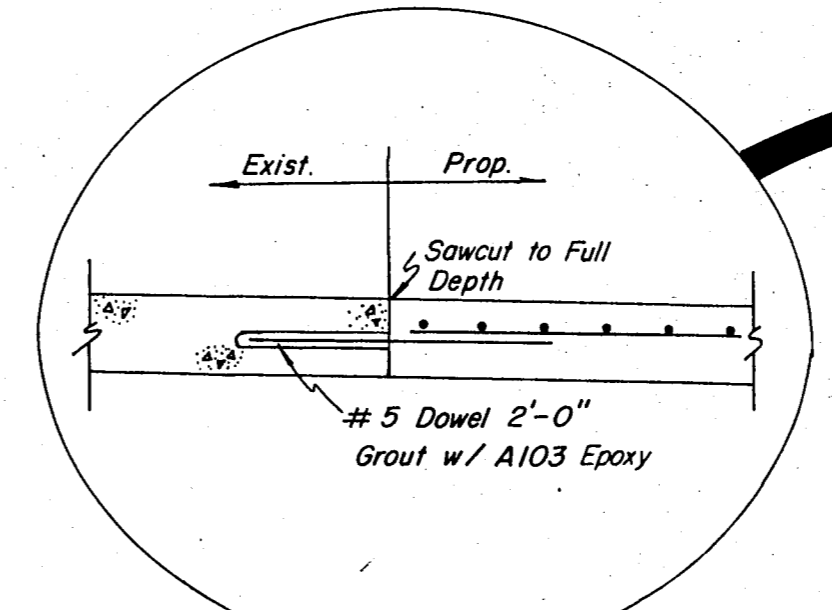
BACKFILL NOTE: Excavated material from trench or roadway may be used provided it has a liquid limit not to exceed 35 and a plasticity index not to exceed 10 when tested in accordance with standard Texas State Department of Highways and Public Transportation.



DETAIL OF UTILITY SUPPORT

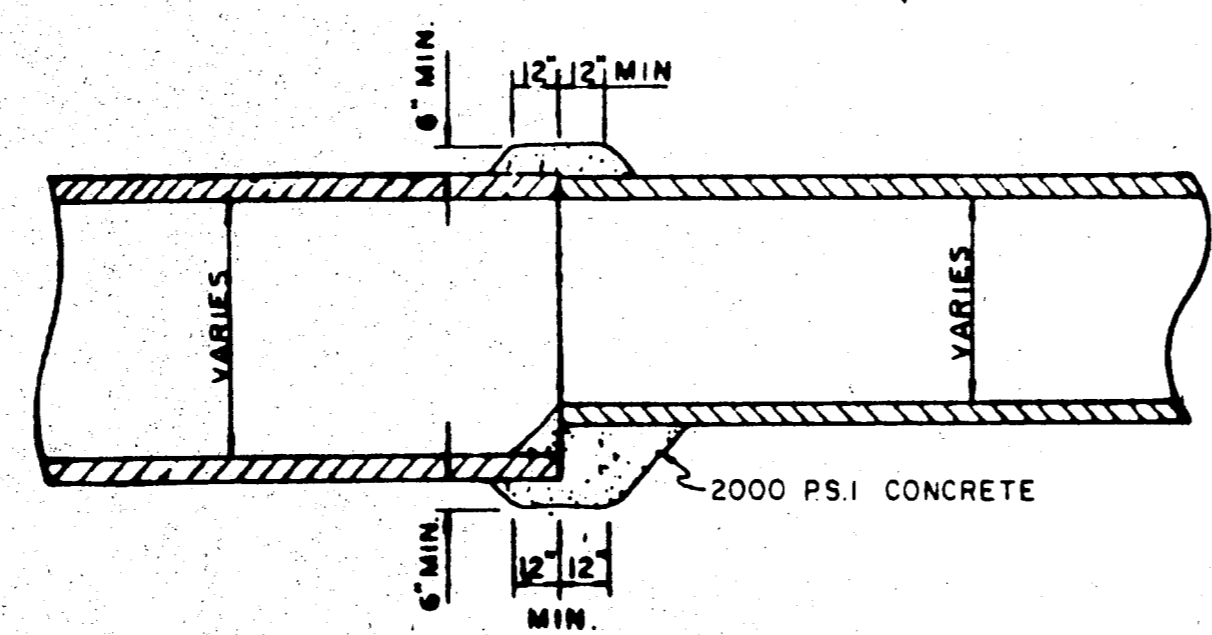


DRIVEWAY PAVING DETAIL (ASPHALT DRIVEWAYS)

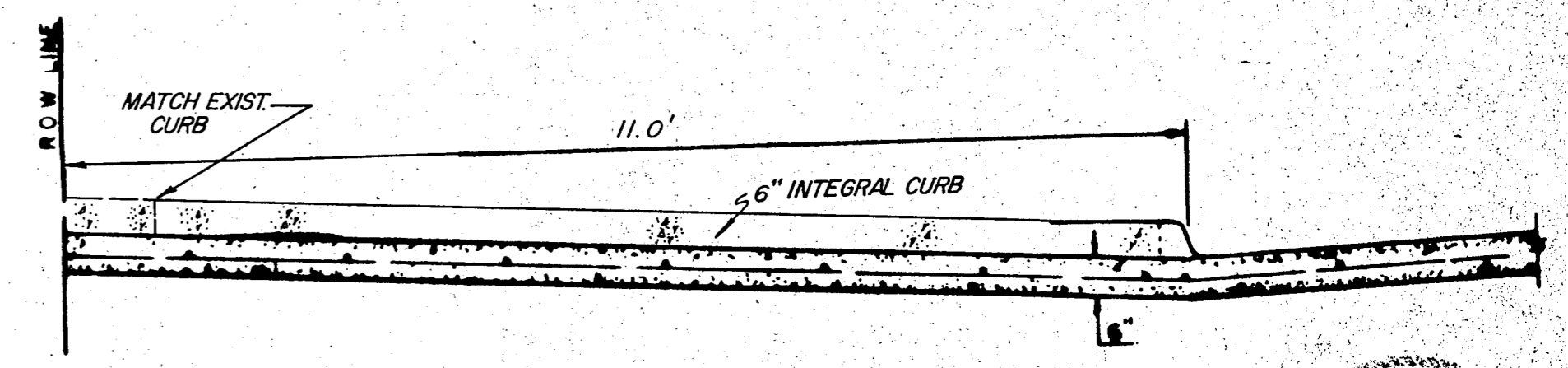


DRIVEWAY RETURN TO STREET (CONCRETE DRIVEWAYS)

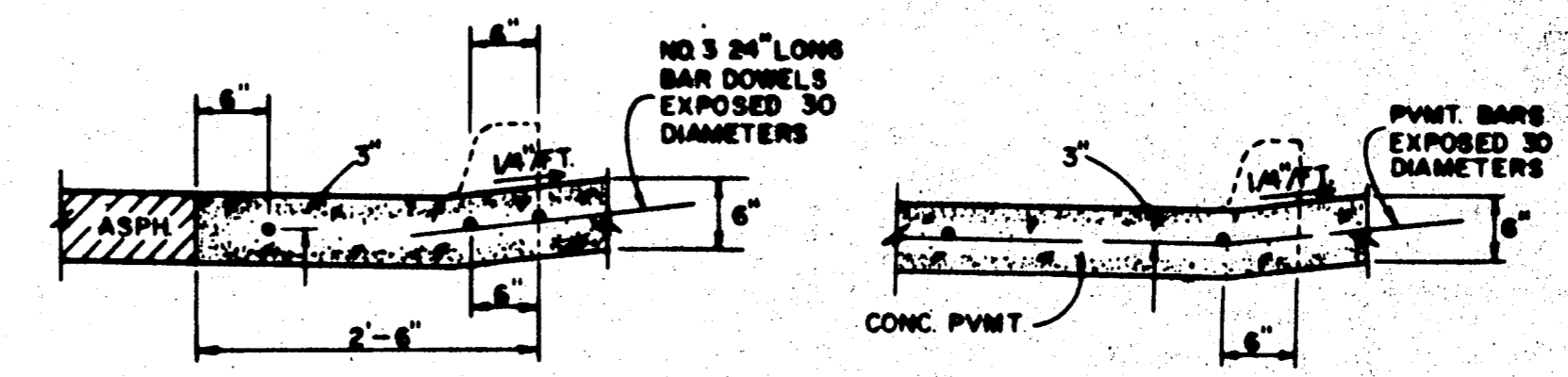
NOTE: WHEREVER EXIST. CURB & GUTTER OCCURS FOR DRIVE EXTENSION, EXIST. CURB SHALL NOT BE REMOVED BEYOND CURB RETURN UNLESS DIRECTED BY ENGINEER.



DETAIL OF CONCRETE COLLAR FOR PIPE CONNECTIONS



SECTION A-A SOUTH DRIVES ONLY



SECTION B-B DRIVEWAY RETURN DETAILS

RECORD DRWG.

6-14-87

No.	Revision	By	Date
TOWN OF ADDISON DALLAS COUNTY, TEXAS DEPT. OF ENGINEERING STD. CONSTRUCTION DETAILS STORM SEWER & DRIVEWAY DETAILS GINN, INC. Consulting Engineers Dallas, Texas			
Designed - GINN	Drawn - GINN, INC.	Date - OCT., 1986	Job No. - 293
Approved - HWG	Checked - GINN, INC.	Scale - N/A	Sheet 9 Of 12