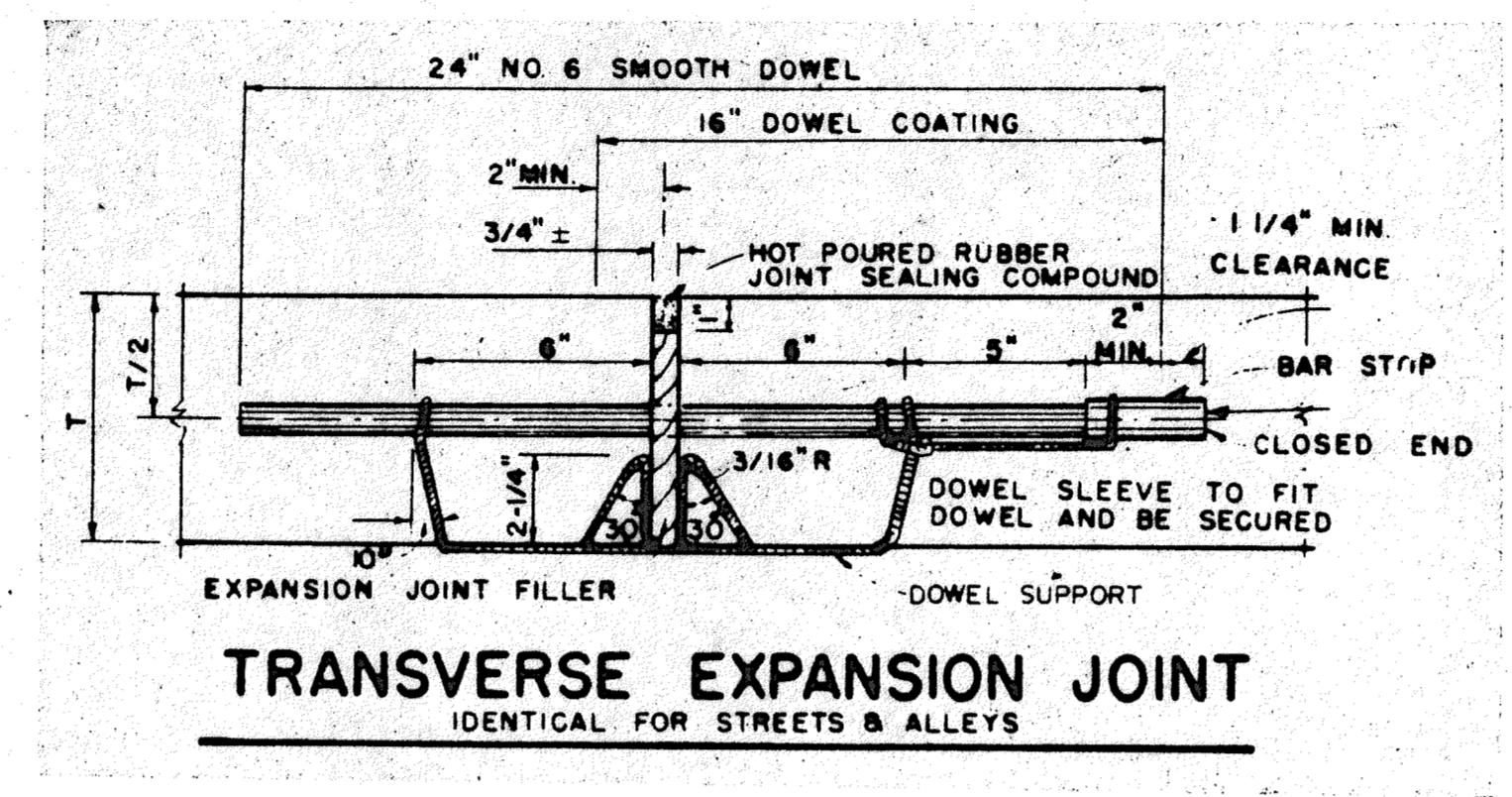
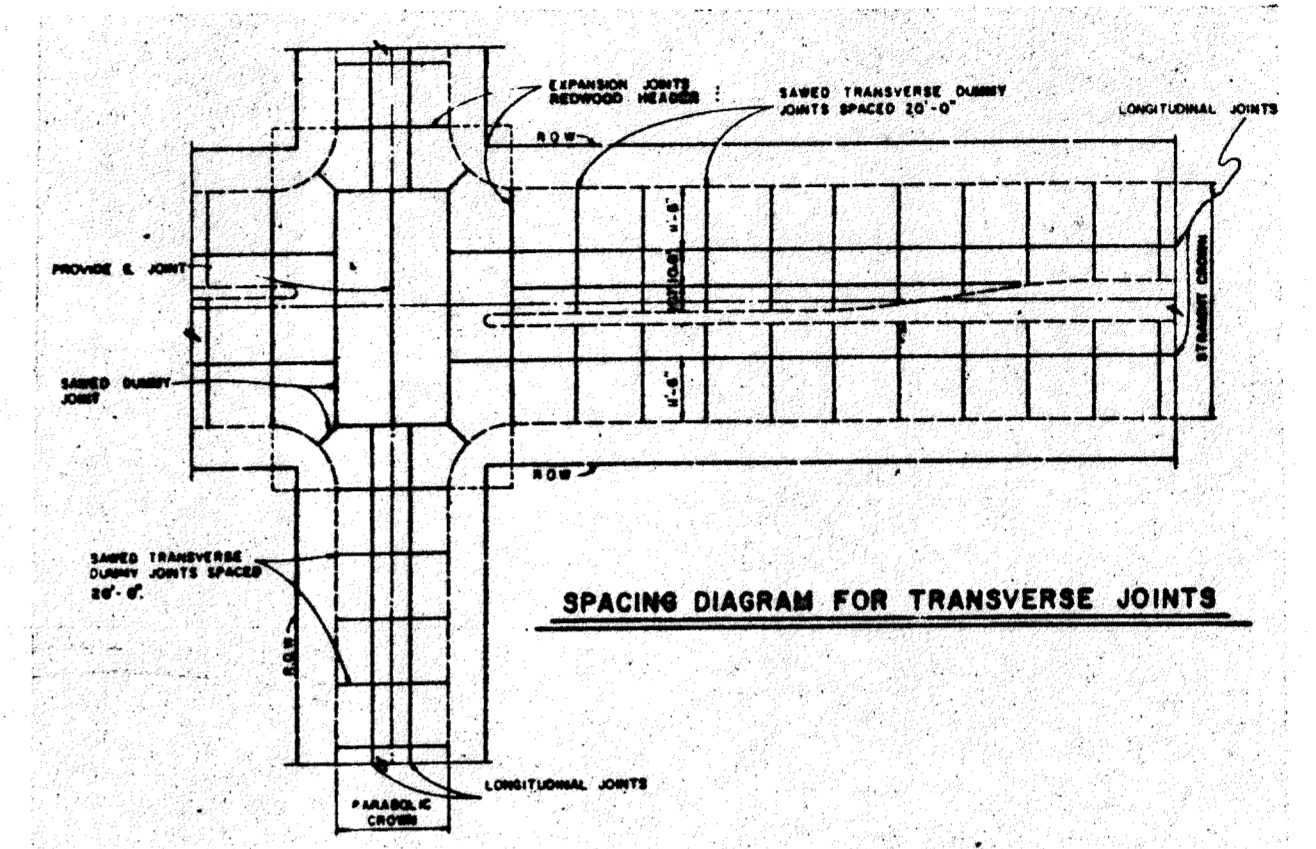


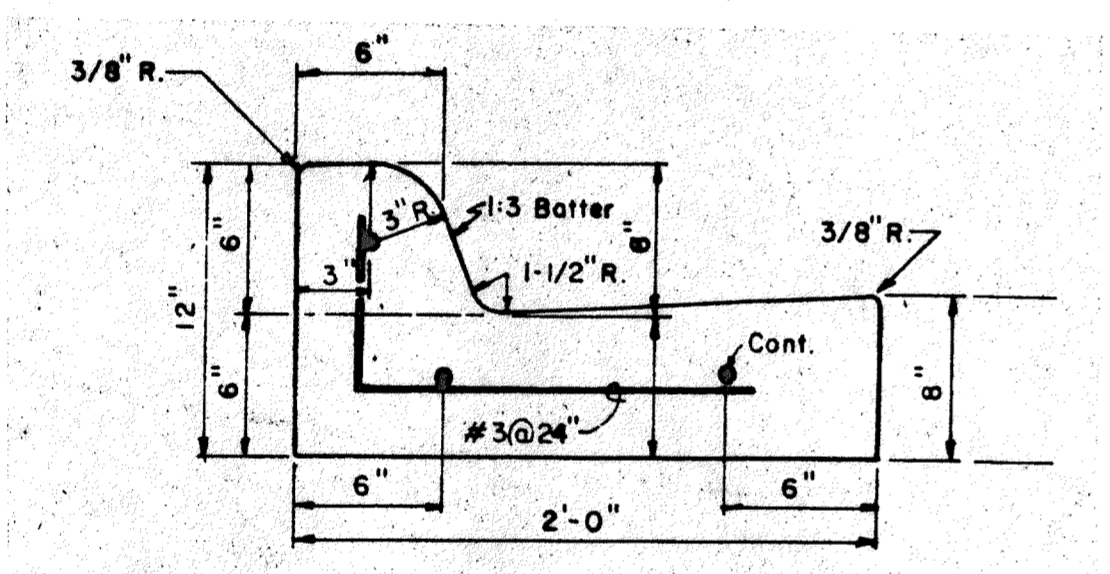
**SECTION - TYP. @ ADDISON ROAD**



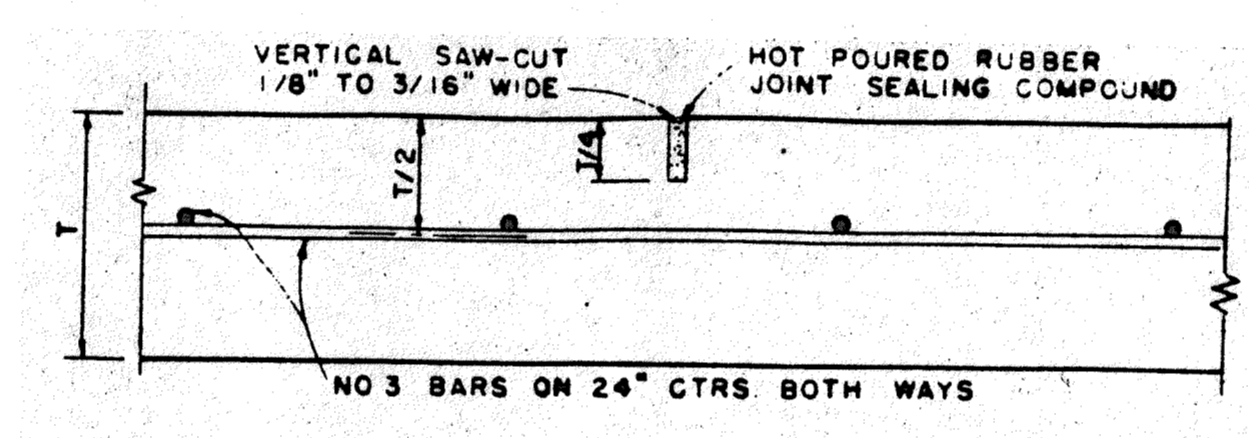
**TRANSVERSE EXPANSION JOINT**  
IDENTICAL FOR STREETS & ALLEYS



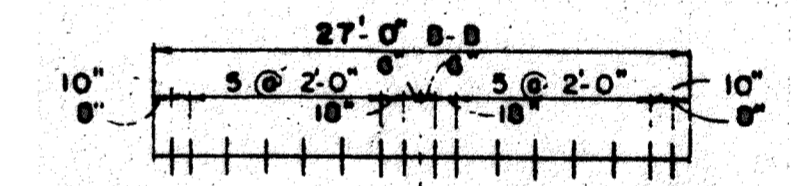
**SPACING DIAGRAM FOR TRANSVERSE JOINTS**



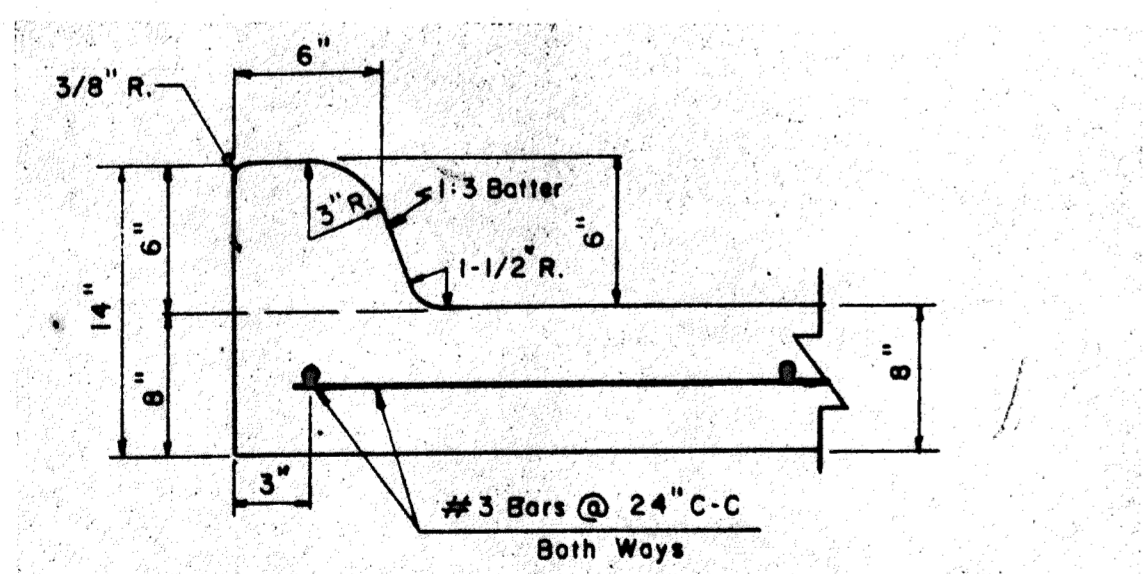
**SEPARATE CURB & GUTTER**  
REINFORCEMENT SHALL BE NO. 5 BARS



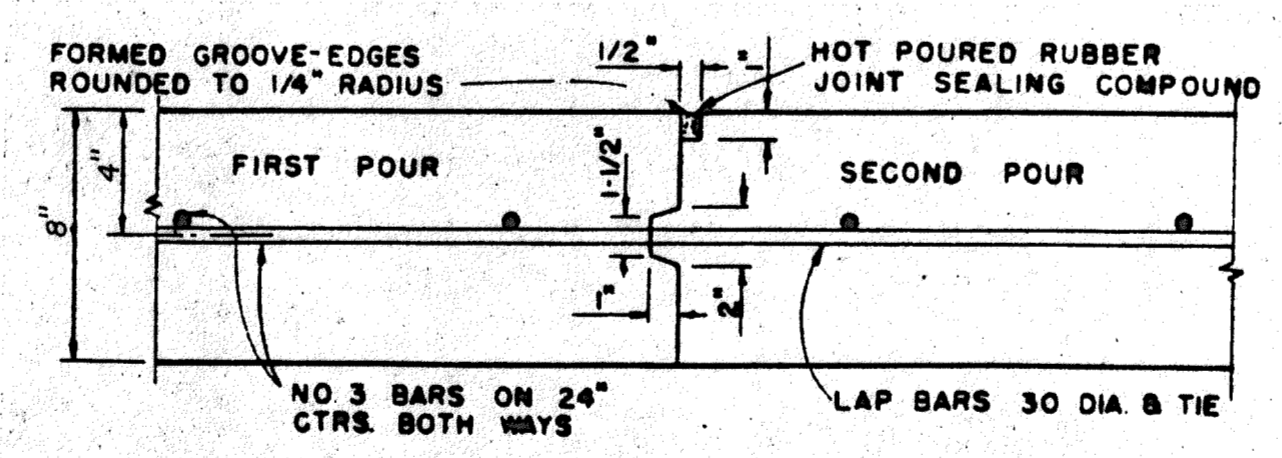
**SAWED DUMMY JOINT**  
IDENTICAL FOR STREETS AND ALLEYS EXCEPT ALLEY LONGITUDINAL REINFORCEMENT BARS



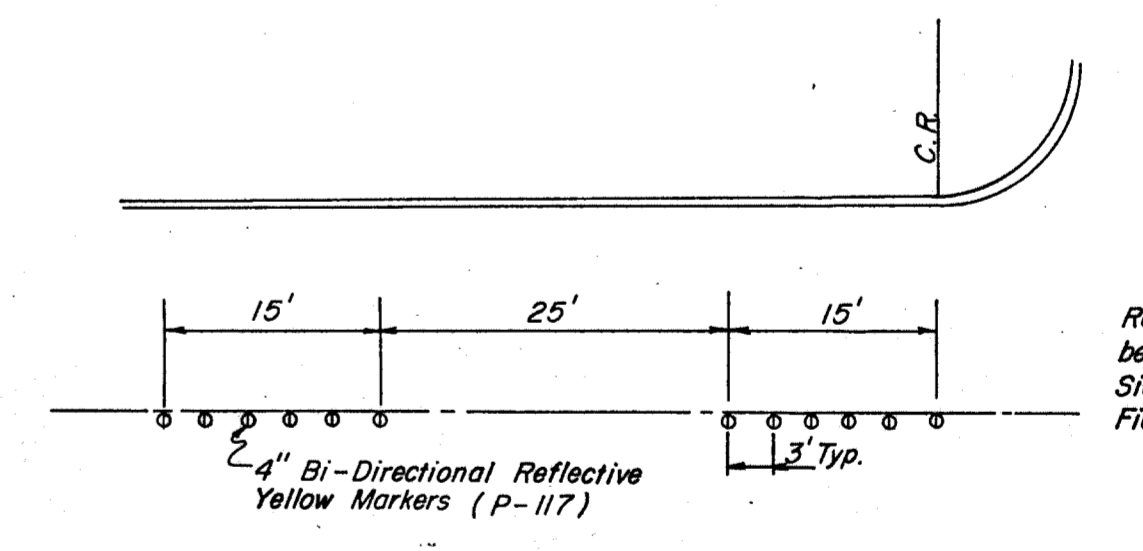
**SPACING DIAGRAM FOR DOWELS AT EXPANSION JOINT**



**6" INTEGRAL CURB & GUTTER DETAIL**



**CONSTRUCTION JOINT**  
FOR 8" THICKNESS PAVEMENT OR BASE



Markers are to be installed off of joints w/ Machine Implemented 2-Part Component Epoxy.

**STANDARD BUTTON LAYOUT**



No.	Revision	By	Date
TOWN OF ADDISON DALLAS COUNTY, TEXAS <b>DEPT. OF ENGINEERING</b> <b>STD. CONSTRUCTION DETAILS</b> <b>PAVING DETAILS</b> <b>GINN, INC.</b> Consulting Engineers Dallas, Texas			
Designed - GINN, INC.	Drawn - GINN, INC.	Date - OCT., 1996	Job No. - 293
Approved - HWG	Checked - GINN, INC.	Scale - N/A	Sheet 8 OF 12