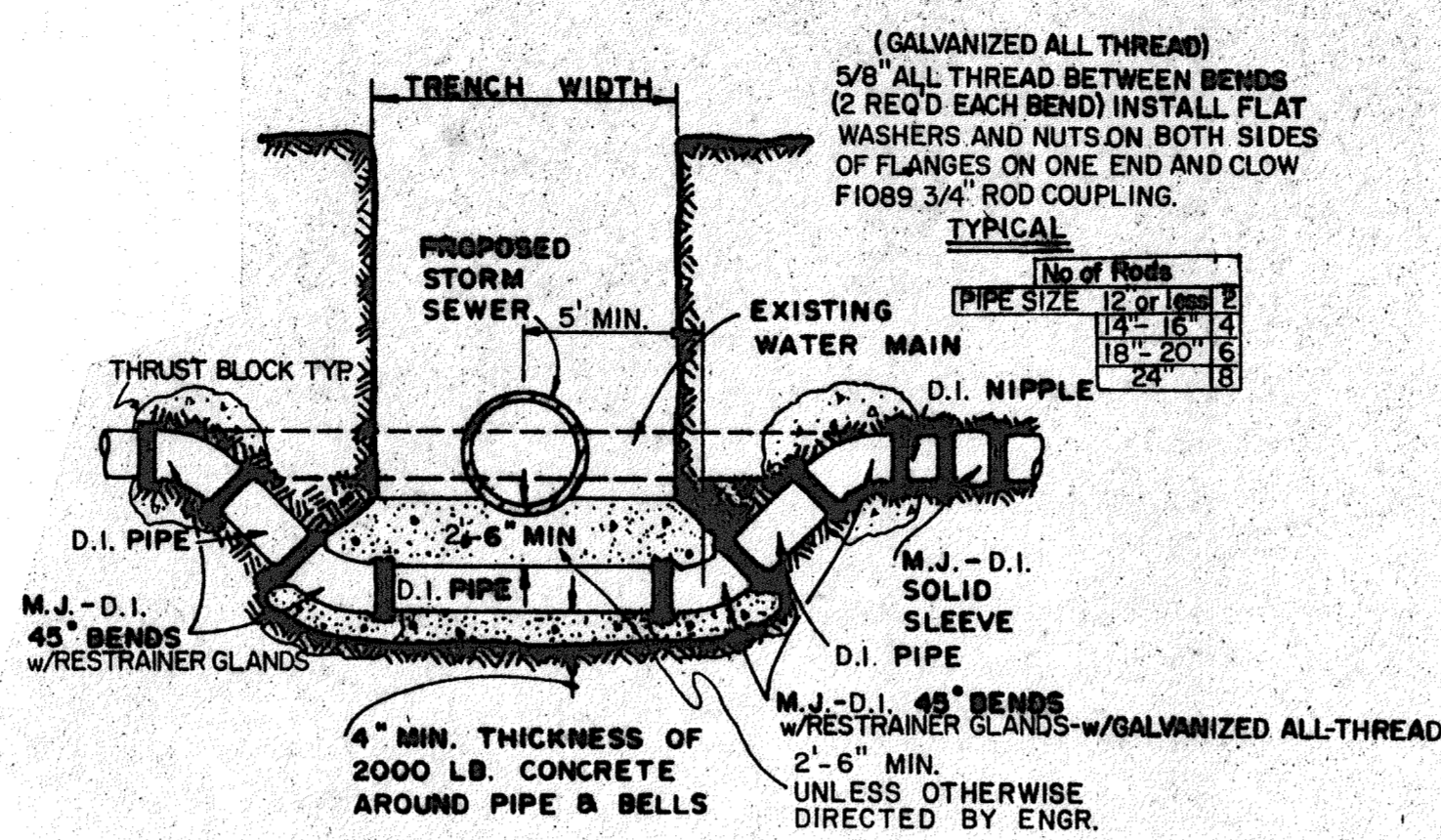
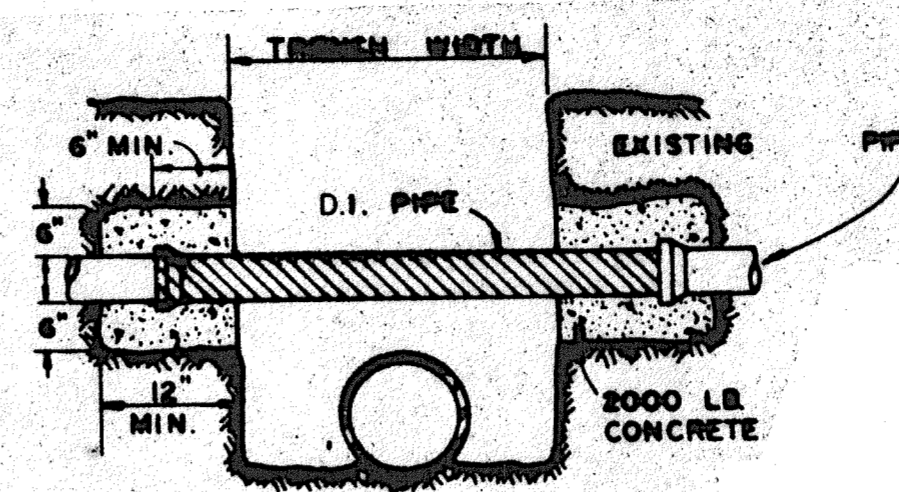


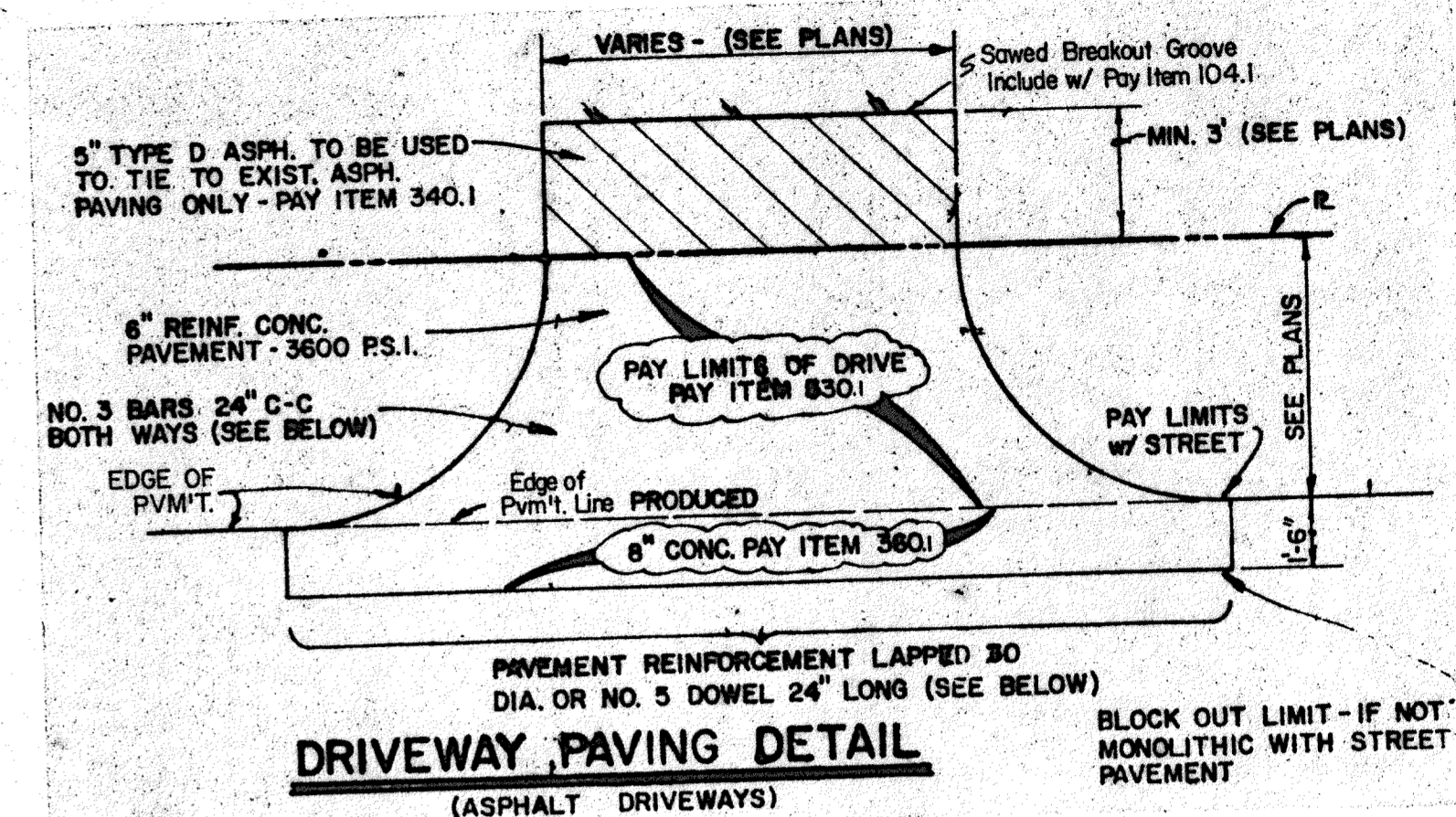
**GRATE INLET ADJUSTMENT DETAIL**



**DETAIL FOR WATER MAIN LOWERING**



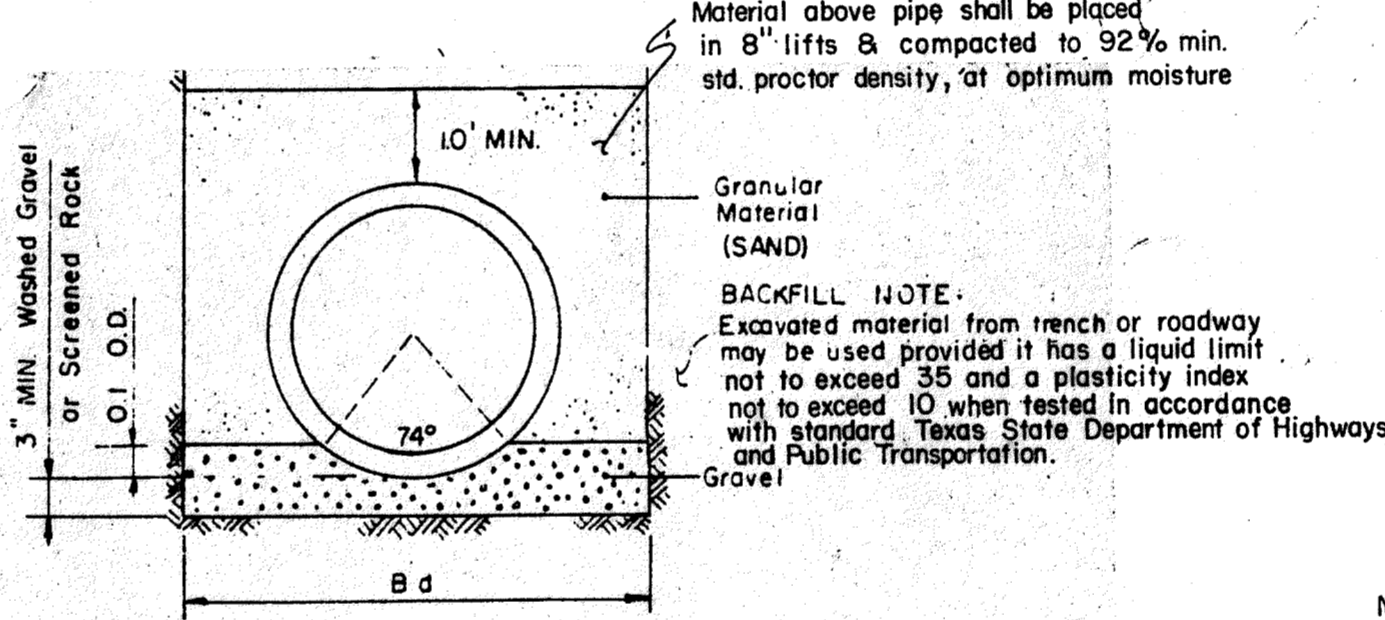
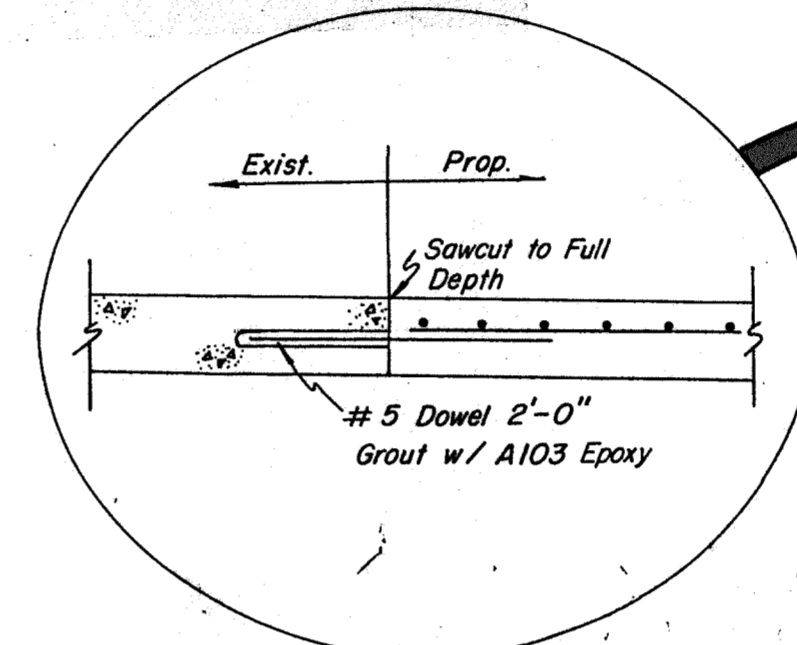
**DETAIL OF UTILITY SUPPORT**



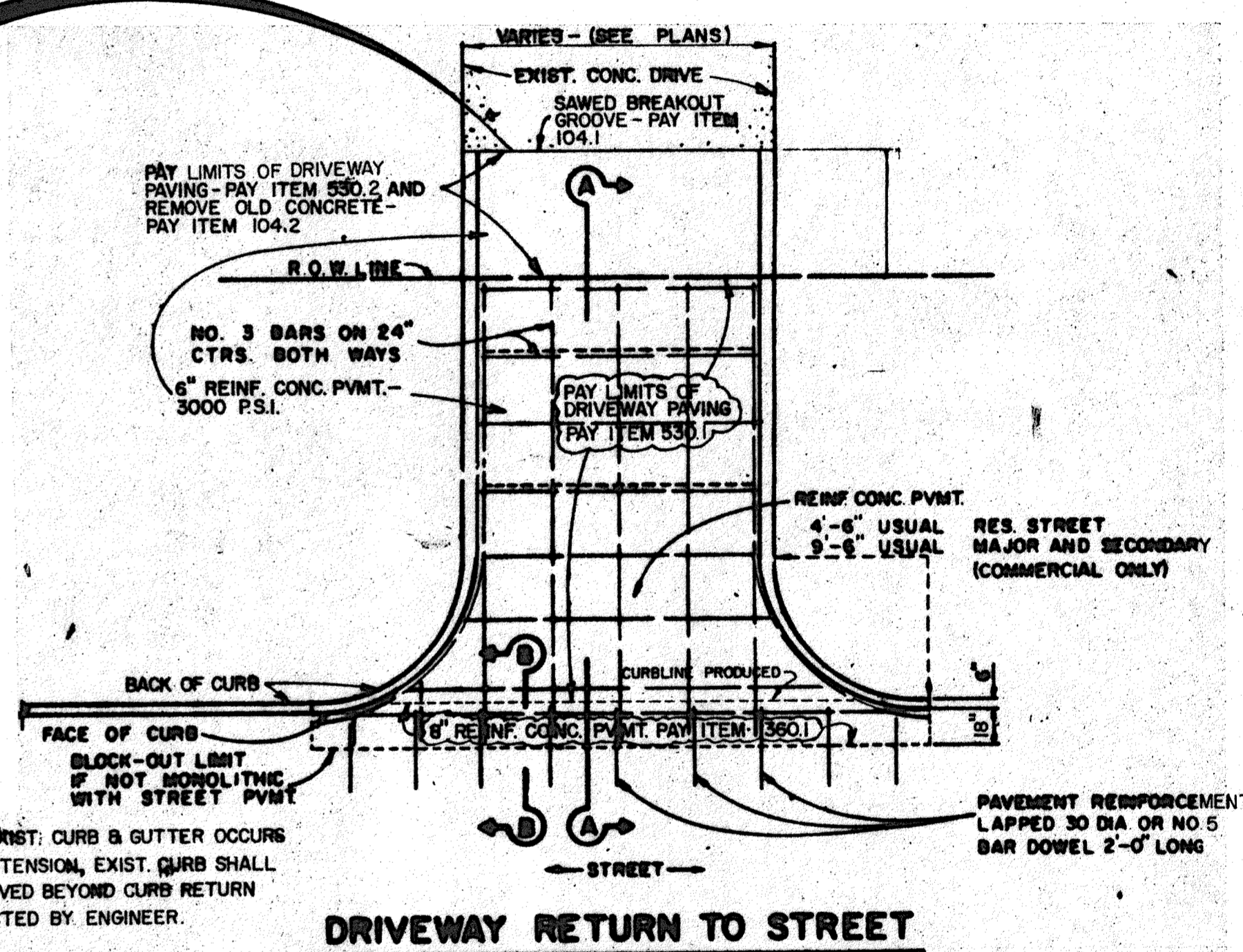
**DRIVEWAY PAVING DETAIL**  
(ASPHALT DRIVEWAYS)

**STORM SEWER EMBEDMENT**

PIPE DIAM.	I. D.	O. D.	B d	CU. YDS. Per 100 L.F.	
				GRAVEL	GRANULAR MATERIAL
15"	19"	39"	39"	4.53	22.28
18"	22.5"	42"	42"	5.13	25.15
21"	26"	45"	45"	5.76	28.03
24"	29.5"	48"	48"	6.42	30.94
27"	33"	51"	51"	7.11	33.86
30"	37"	54"	54"	7.85	36.72
33"	40.5"	57"	57"	8.59	39.64
36"	44"	60"	60"	9.36	42.58
39"	47.5"	63"	63"	10.16	45.53
42"	51"	66"	66"	10.99	48.51
48"	58"	72"	72"	12.72	54.51
54"	65"	78"	78"	14.57	60.57
60"	72"	84"	84"	16.53	66.71
66"	79"	90"	90"	18.60	72.92
72"	86"	96"	96"	20.79	79.19
78"	93"	102"	102"	23.08	85.53
84"	100"	108"	108"	25.49	91.95
90"	108.5"	115"	115"	28.47	99.02
96"	114"	120"	120"	30.64	104.98
102"	122.5"	129"	129"	34.66	118.41

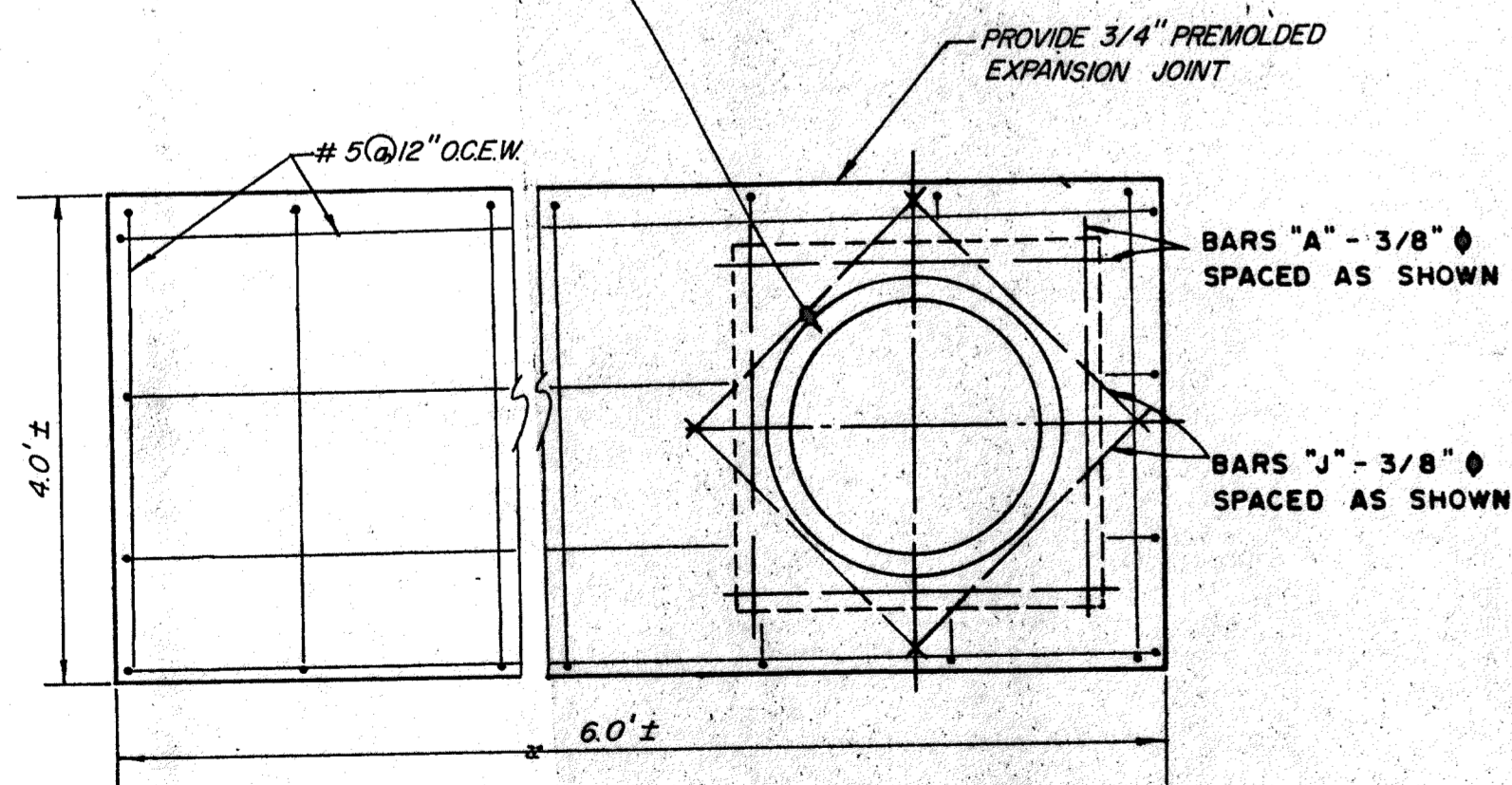


**STORM SEWER EMBEDMENT**

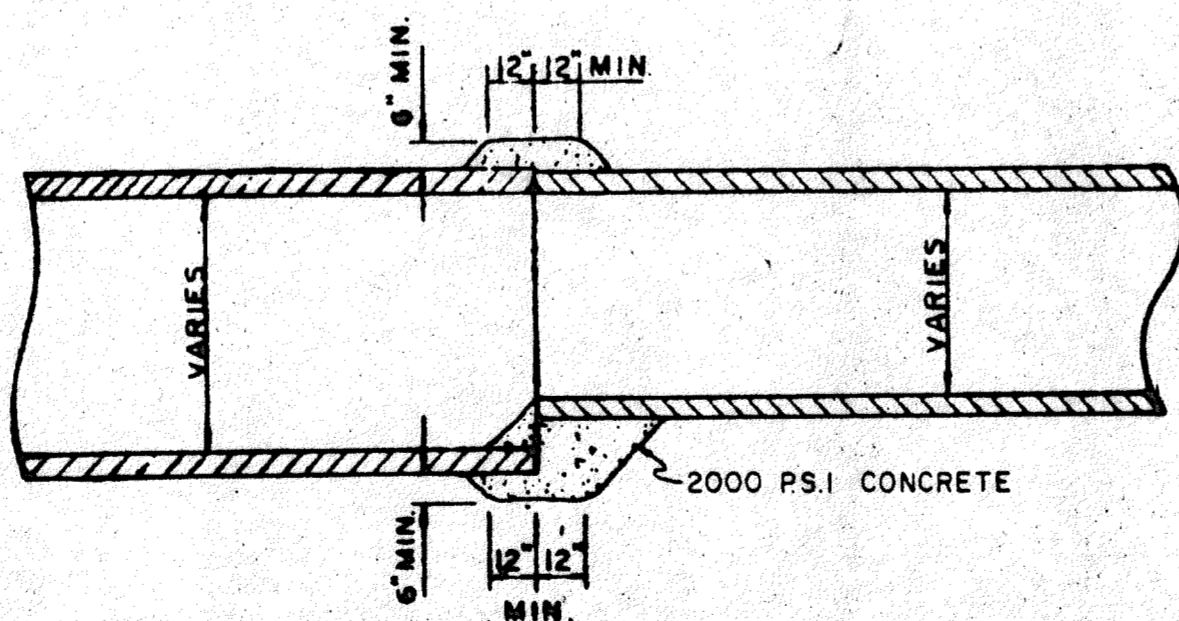


**DRIVEWAY RETURN TO STREET**  
(CONCRETE DRIVEWAYS)

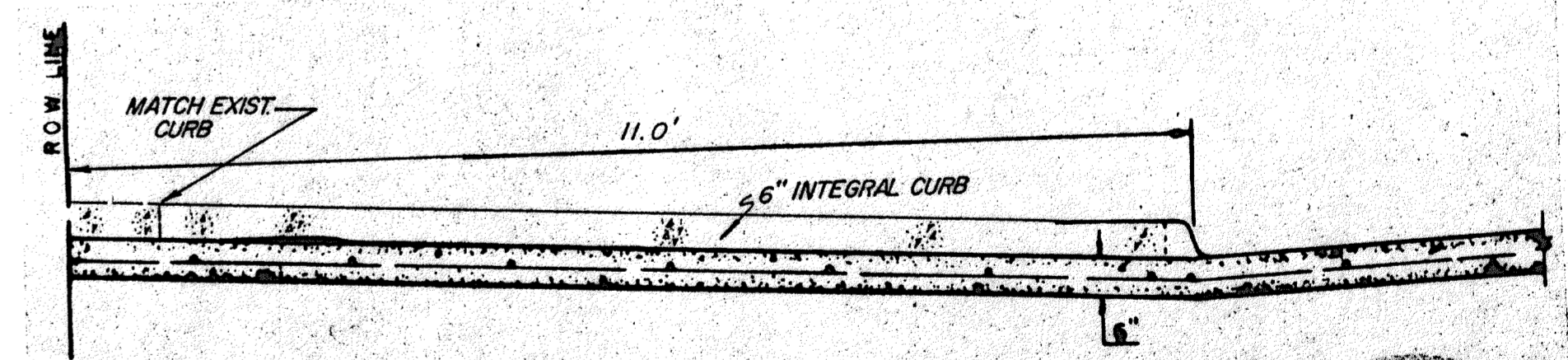
NOTE: FRAME AND COVER SHALL BE BASS & HAYS PATTERN NO. 380-24 OR EQUAL AND SHALL BE OF GRAY CAST IRON CONFORMING TO A.S.T.M. SPEC. A-48 FOR CLASS 30 CAST IRON. EXCEPT INLET @ STA. 2+67



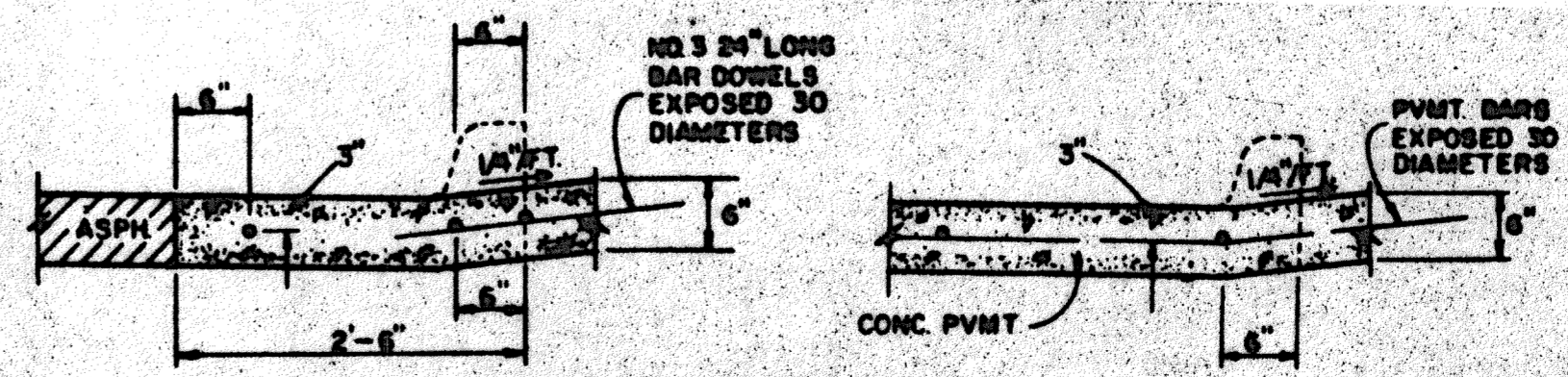
**TOP PLAN**



**DETAIL OF CONCRETE COLLAR FOR PIPE CONNECTIONS**



**SECTION A-A**  
SOUTH DRIVES ONLY



**SECTION B-B**  
**DRIVEWAY RETURN DETAILS**

No.	Revision	By	Date
TOWN OF ADDISON DALLAS COUNTY, TEXAS <b>DEPT. OF ENGINEERING</b> <b>STD. CONSTRUCTION DETAILS</b> <b>STORM SEWER &amp; DRIVEWAY DETAILS</b> GINN, INC. Consulting Engineers Dallas, Texas			
Designed - GINN	Drawn - GINN, INC.	Date - OCT., 1986	Job No. - 293
Approved - HWG	Checked - GINN, INC.	Scale - N/A	Sheet 9 OF 12

Randall C. Hill  
4-14-87