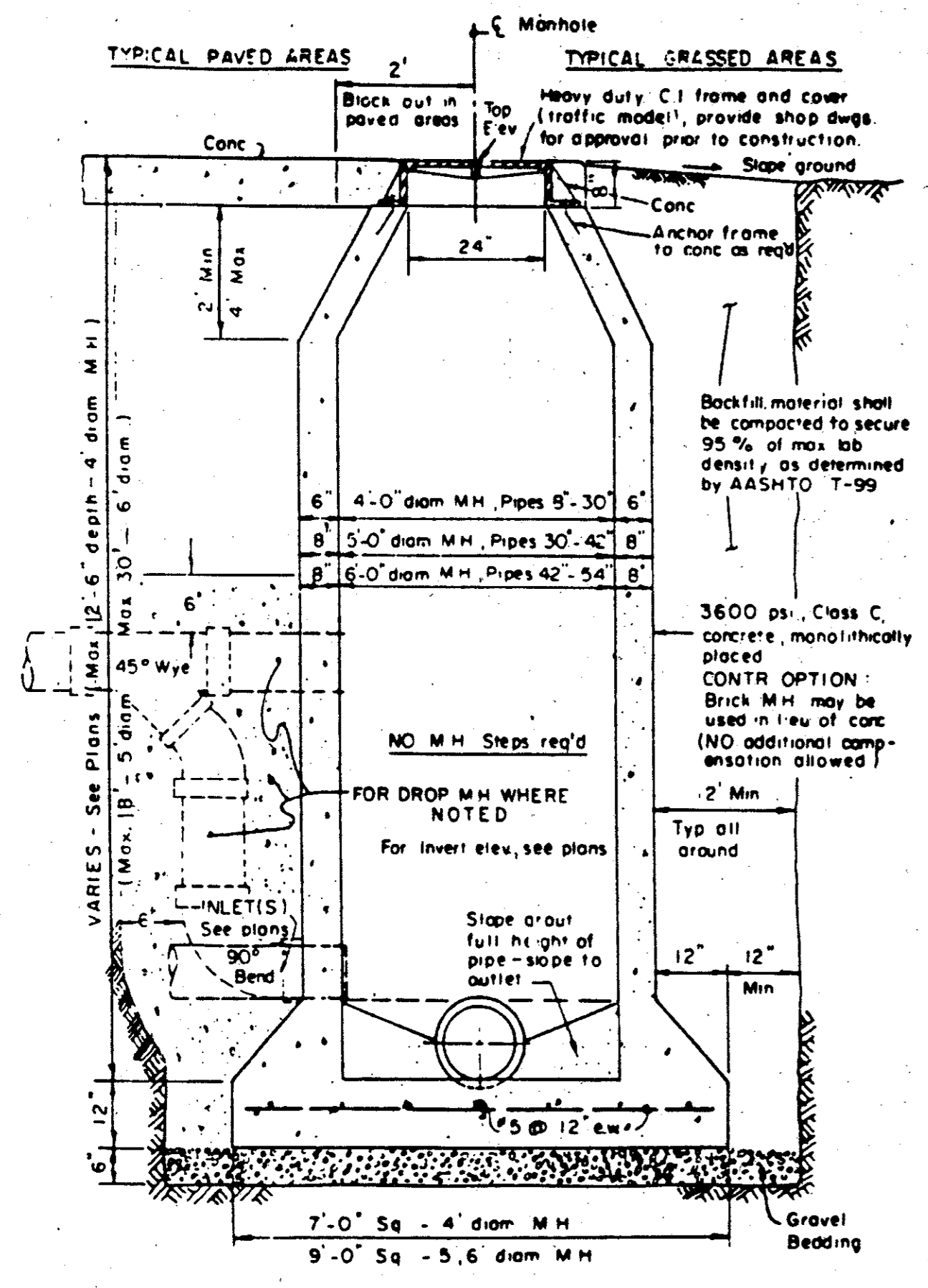


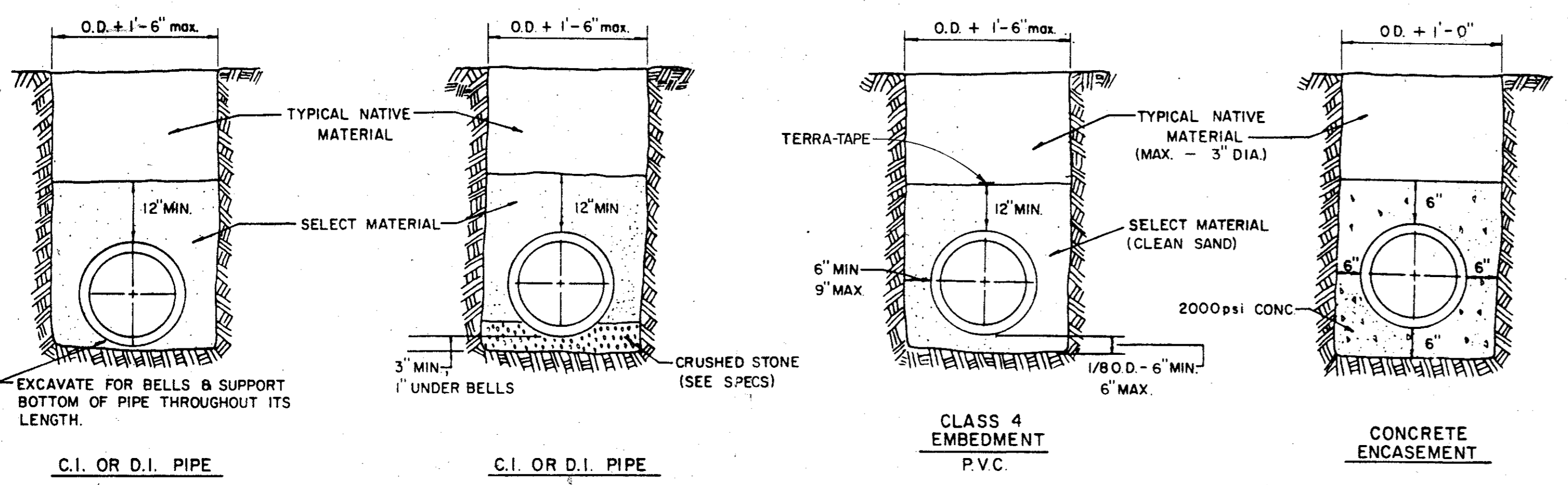
8/17/92



CAST IN PLACE MANHOLE

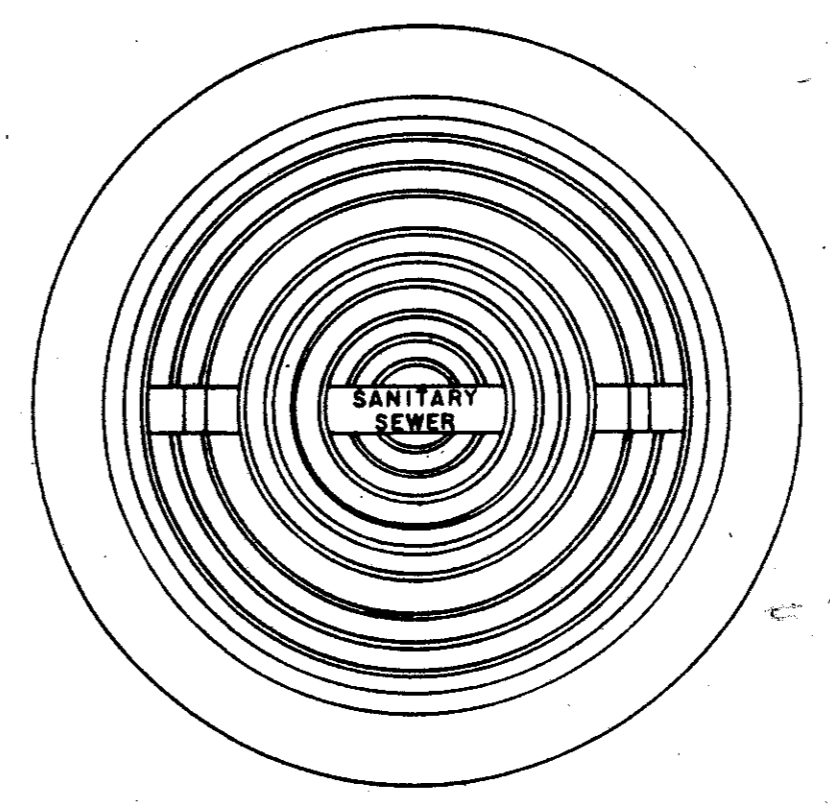
WHERE DROP M.H. IS REQUIRED, USE INSIDE DROP CONNECTION AS PER TOWN OF ADDISON STANDARDS.

Typical native material compacted to:
 95% Optimum moisture 0 to ± 3% under pavement
 95% Optimum moisture 0 to ± 3% outside curb lines
 Jettling is not allowed
 Backfill to be compacted in 6" ± lifts

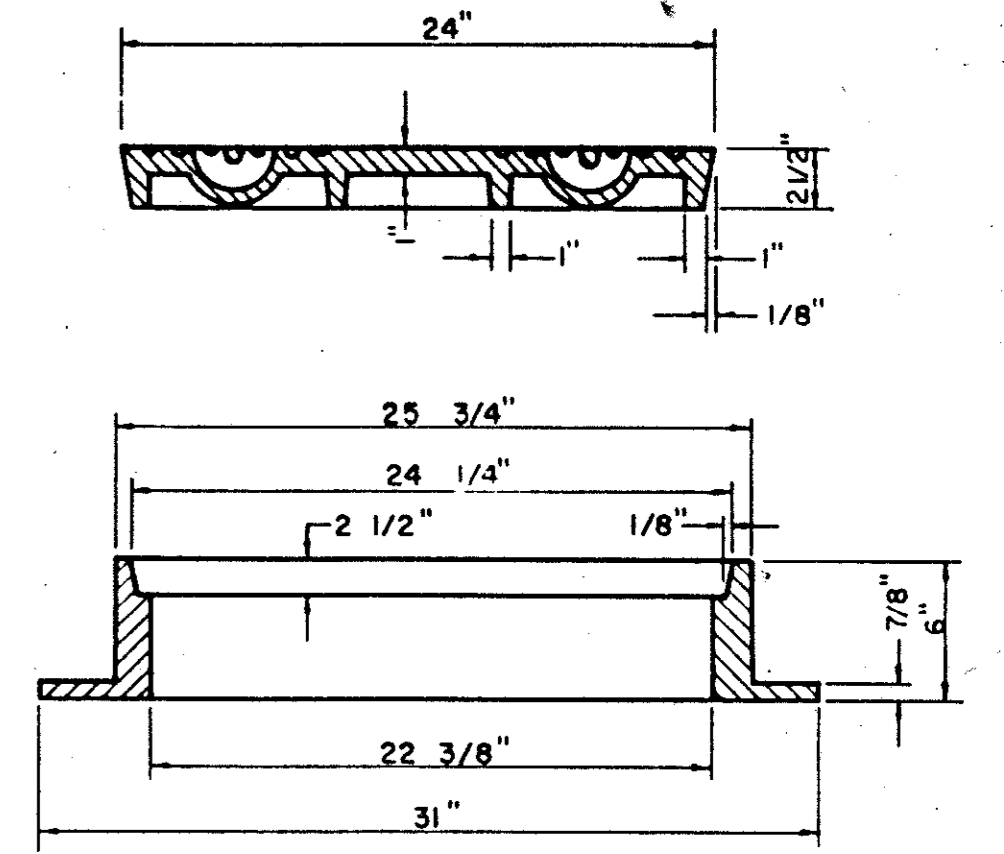


EMBEDMENT DETAILS FOR FORCE MAIN

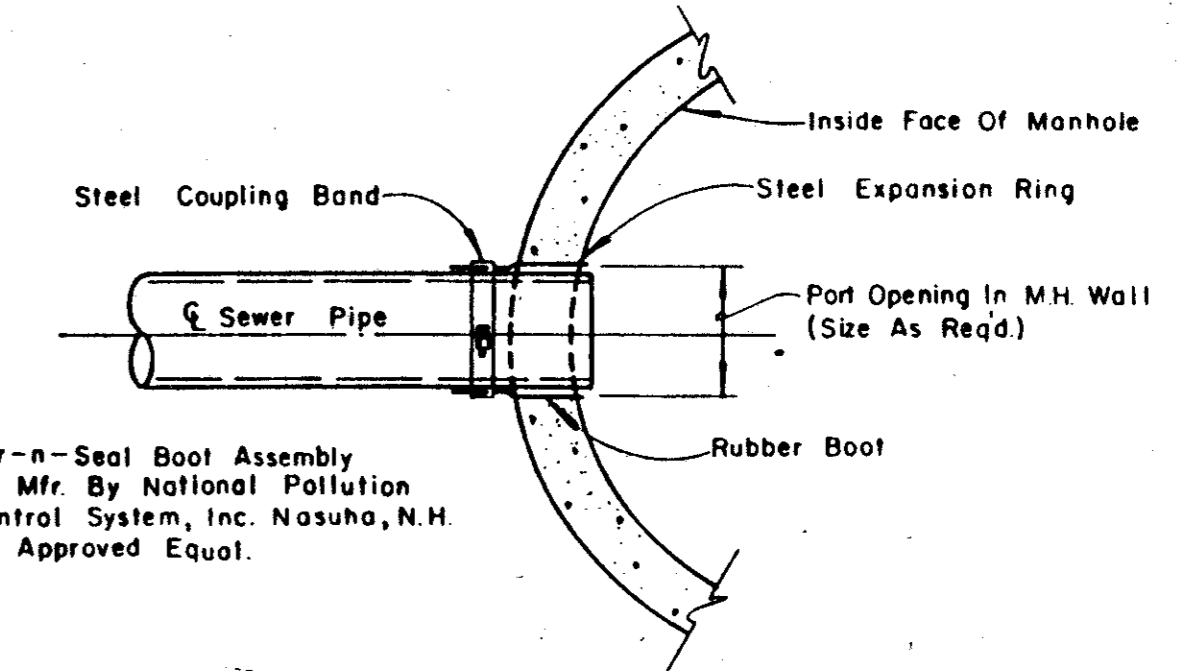
NOTE:
 ALL FORCE MAIN, THIS PROJECT, SHALL HAVE CLASS 4 EMBEDMENT AS SHOWN ABOVE UNLESS OTHERWISE SHOWN ON PLANS.



APPROX WEIGHT RING AND COVER 385 LBS.



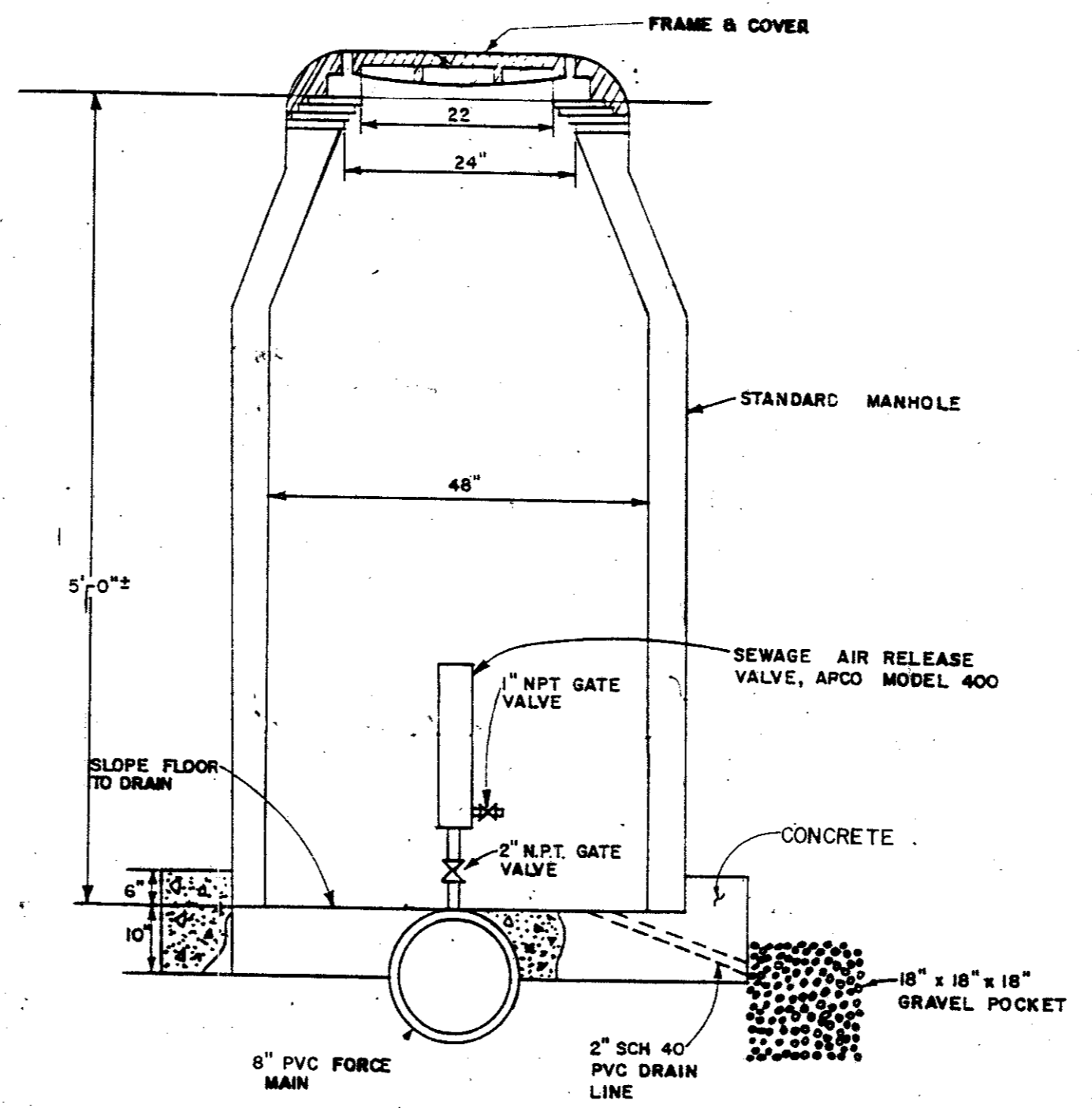
CAST IRON GRATE AND FRAME DETAIL



Kor-n-Seal Boot Assembly As Mfr. By National Pollution Control System, Inc. Nashua, N.H. Or Approved Equal.

NOTE:
 Contractor To Install Kor-n-Seal Boot Assembly Per Mfr. Recommendations In A Neat And Workman-Like Manner

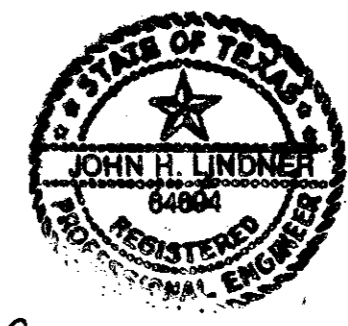
TYPICAL SEWER CONNECTION AT MANHOLE



AIR RELEASE VALVE STRUCTURE

AS BUILT

DATE	REVISION	MADE	CHKD.	APPD.		
CARTER & BURGESS, INC. ENGINEERS - PLANNERS - SURVEYORS DALLAS TEXAS						
RAWHIDE CREEK LIFT STATION AND FORCE MAIN SANITARY SEWER DETAILS						
TOWN OF ADDISON, TEXAS						
DESIGN	DRAWN	CHKD.	SCALE	DATE	FILE	NO.
McFALL	BARR HULEN	LINDNER	AS SHOWN	AUG. 92	01-1457	11 of 13



John H. Lindner
 8/17/92