

- GENERAL NOTES**
1. PAVEMENT TO BE 4" BACK-TO-BACK, 6"-3000 PSI REINFORCED CONCRETE WITH 6" CURBS AND 5" CROWN.
 2. LIME WILL BE REQUIRED IN SUBGRADE IF P.I. IS GREATER THAN 10. CONTRACTOR TO PROVIDE TWO TESTS.
 3. ALL STORM DRAIN PIPE TO BE CLASS III R.C.P.
 4. ALL SEWER PIPE WILL BE PVC SDR-35.
 5. ALL WATER PIPE WILL BE PVC DR-18 (AWWA C900, TABLE 2) WITH TRACER WIRE - 12 GA. OR LARGER.
 6. FIRE HYDRANTS WILL BE MUELLER CENTURIAN.
 7. FILL ALL AREAS SOUTH AND EAST OF RIGHT-OF-WAY AND AS INDICATED ON PLAN TO ELEVATION 602.04.
 8. ALL CONSTRUCTION SHALL CONFORM TO CITY OF ADDISON STANDARDS AND SPECIFICATIONS.
 9. SLEEVES REQUIRED AT STATIONS 0+30 AND 16+30. FOR WATER LINE CUT-INS WILL BE PAID FOR AS FITTINGS.
 10. EXISTING 12" SANITARY SEWER MUST REMAIN IN SERVICE UNTIL NEW SEWER CONSTRUCTION HAS BEEN COMPLETED AND ACCEPTED.

7/16/78
224.53
97 D 68

- INDEX •
1. COVER SHEET
 2. DRAINAGE AREA MAP
 3. PAVING & STORM SEWER, PLAN & PROFILE, STA. 0+00 TO STA. 8+00
 4. PAVING & STORM SEWER, PLAN & PROFILE, STA. 8+00 TO STA. 19+40
 5. WATER & SANITARY SEWER PLAN
 6. SANITARY SEWER PROFILE

CITY OF ADDISON
APPROVED
FOR CONSTRUCTION
[Signature]
BUILDING DEPARTMENT
5-18-79

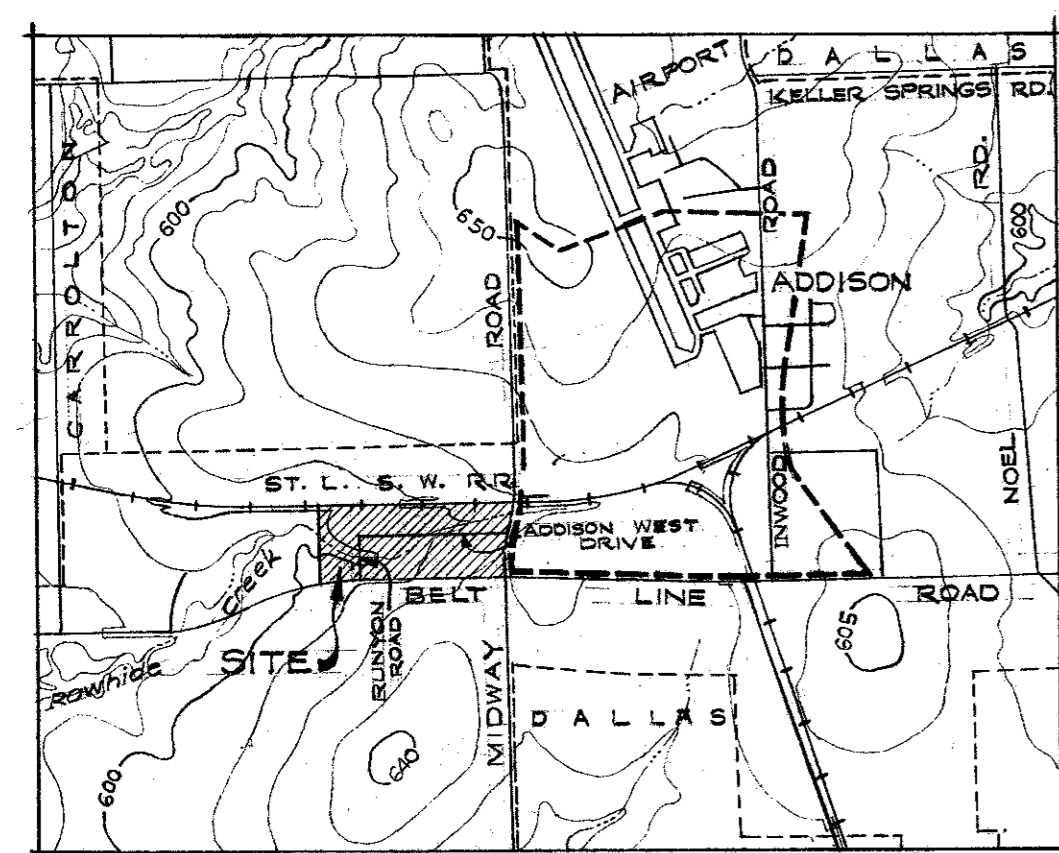
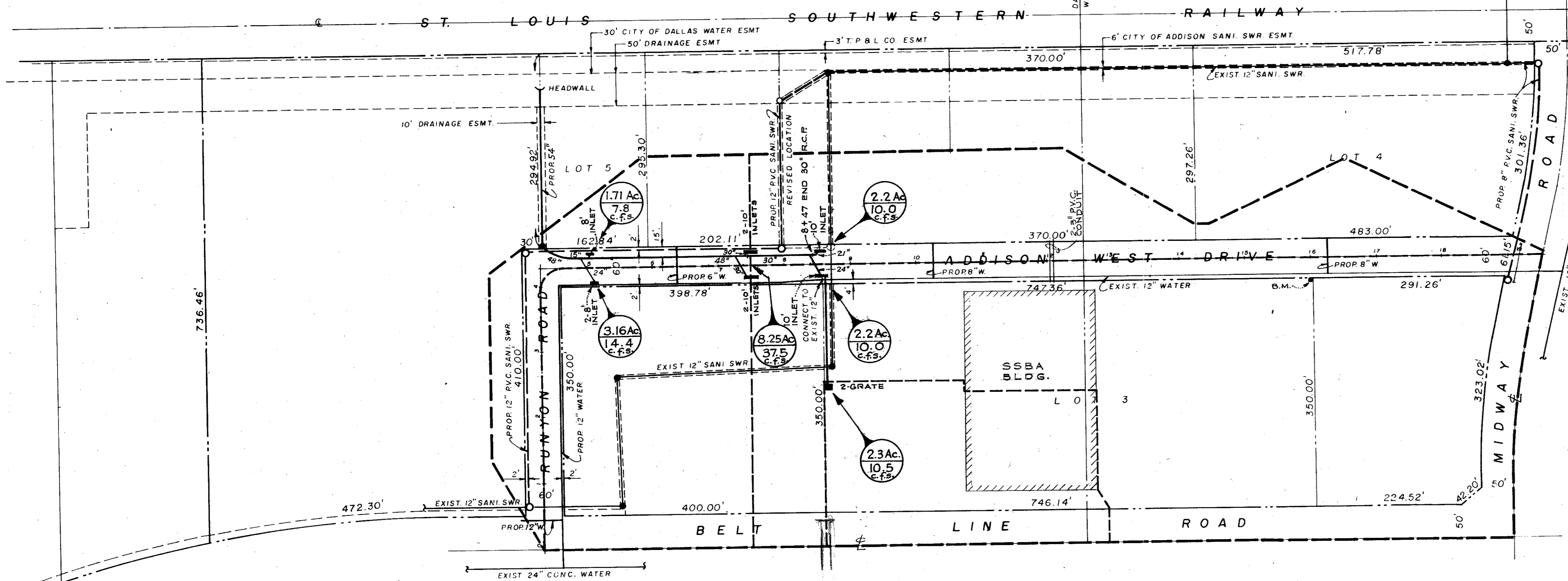
NOTE: CONTRACTOR IS HEREBY INSTRUCTED TO EXERCISE CARE IN MEETING OR EXCEEDING ALL REQUIREMENTS OF BOTH NATIONAL AND LOCAL CODES AND/OR ORDINANCES APPLICABLE TO HIS WORK. APPROVAL OF THESE DRAWINGS SHALL NOT BE CONSTRUED TO RELIEVE RESPONSIBILITY OR IMPLY VARIANCE TO SUCH CODES.

1/6

BENCH MARK: TOP OF CURB NORTHEAST CORNER OF CONCRETE PARKING LOT. ELEV. 615.74.

CITY OF ADDISON, TEXAS ADDISON WEST INDUSTRIAL PARK	
IMPROVEMENT PLANS	
SCALE: 1" = 100'	
POWELL & POWELL, ENGINEERS 430 ONE LEMMON PARK NORTH DWG. NO. S-641.1	FEBRUARY, 1979 DALLAS, TEXAS 2908-79-1-1.1

REVISED: MAY 1, 1979



DRAINAGE AREA AND VICINITY MAP
SCALE: 1" = 2000'

DESIGN CRITERIA

- Q = CIA
- $t_c = 15 \text{ MIN.}$
- $I_{25} = 5.05$
- C = 0.90
- $CI_{25} = 4.55$

CITY OF ADDISON
APPROVED
FOR CONSTRUCTION

BUILDING DEPARTMENT

DATE: _____
NOTE: CONTRACTOR IS HEREBY INSTRUCTED TO EXERCISE CARE IN MEETING OR EXCEEDING ALL REQUIREMENTS OF BOTH NATIONAL AND LOCAL CODES AND FOR ORDINANCES APPLICABLE TO THIS WORK. APPROVAL OF THESE DRAWINGS SHALL NOT BE CONSTRUED TO RELIEVE RESPONSIBILITY OR IMPLY VARIANCE TO SUCH CODES.

BENCH MARK: TOP OF CURB NORTHEAST CORNER OF CONCRETE PARKING LOT. ELEV. 615.74

2/6

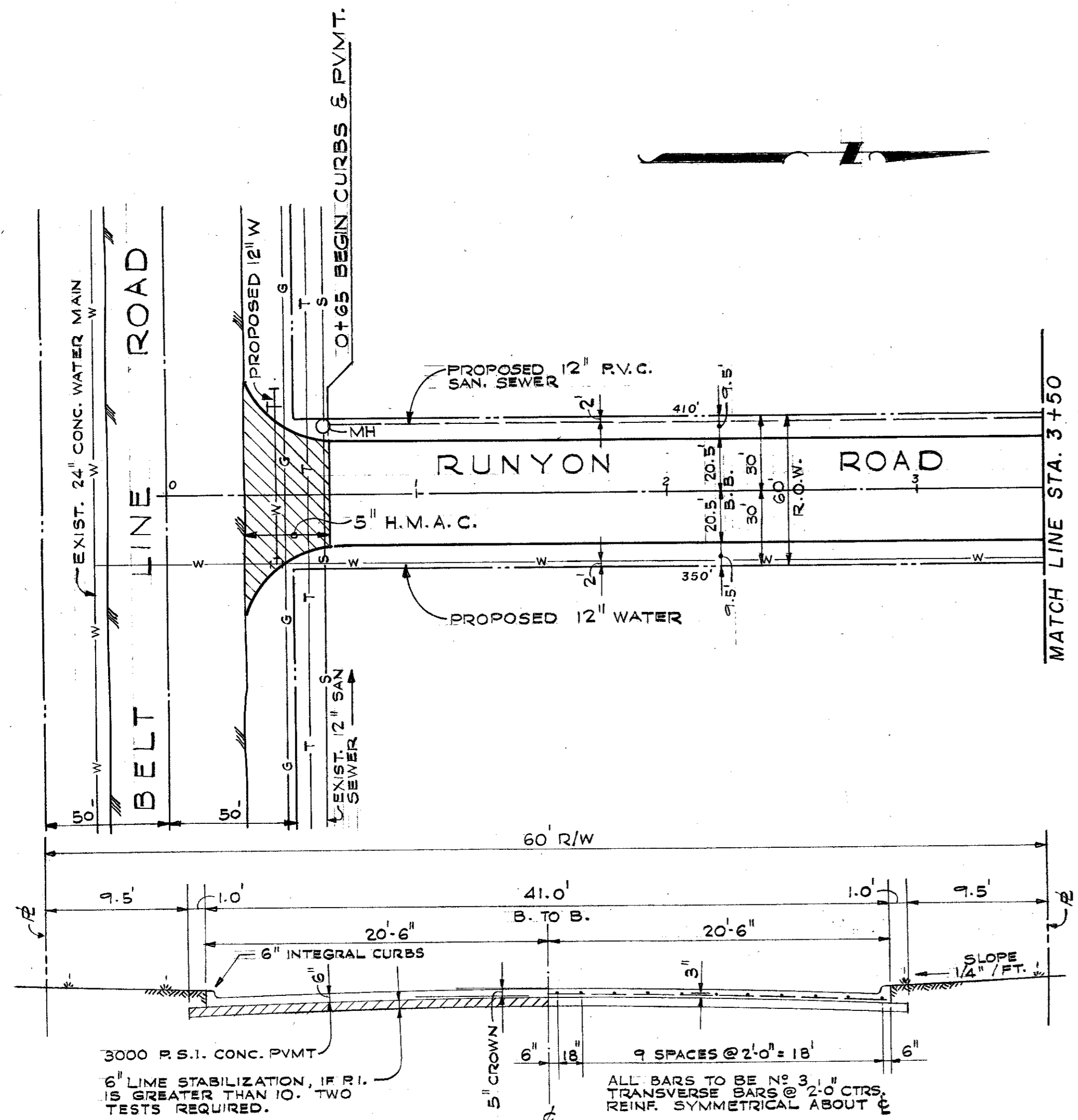
CITY OF ADDISON, TEXAS
ADDISON WEST INDUSTRIAL PARK
DRAINAGE MAP
DEPARTMENT OF PUBLIC WORKS

SCALE: 1" = 100'

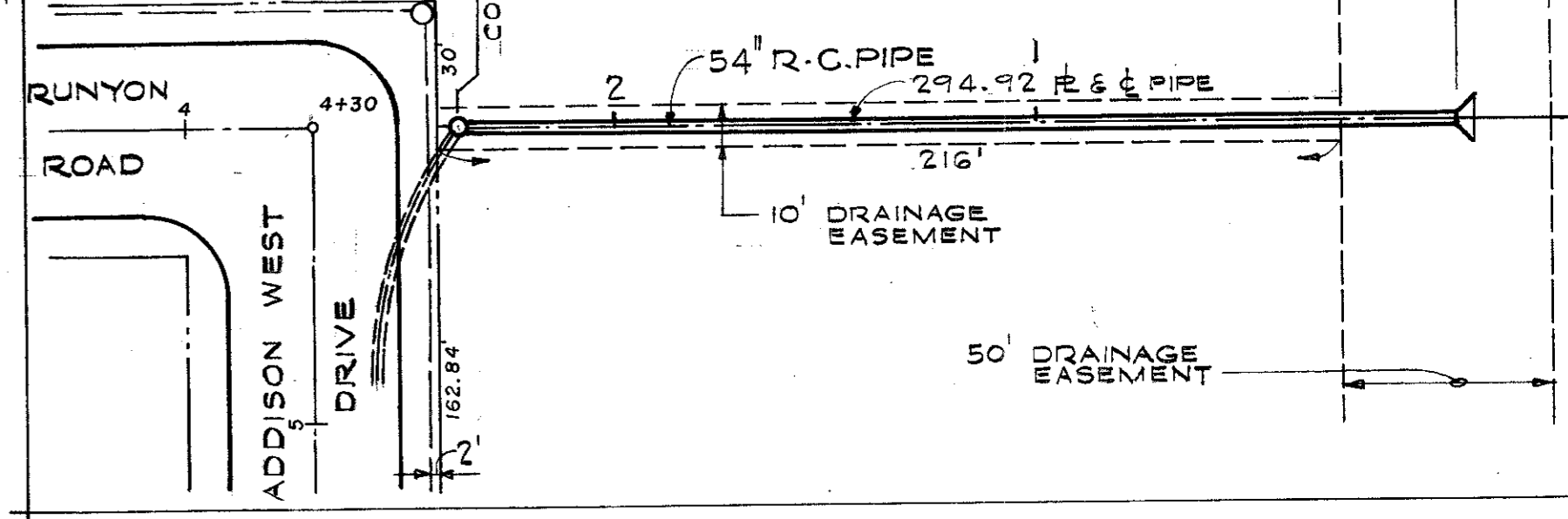
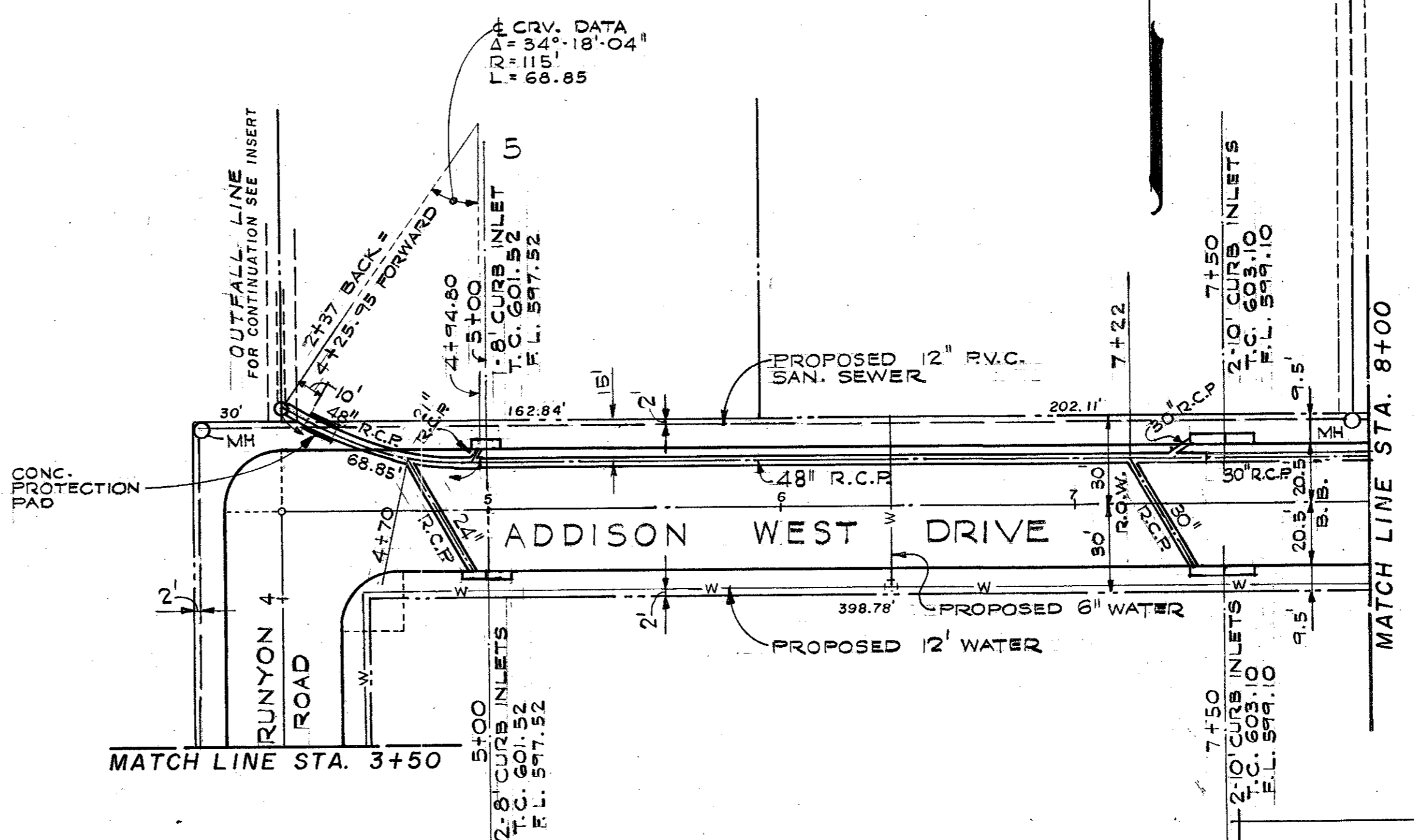
REVISED: MAY 1, 1979

POWELL B. POWELL, ENGINEERS
430 ONE LEMMON PARK NORTH
DALLAS, TEXAS
DWG. NO. S-641.1

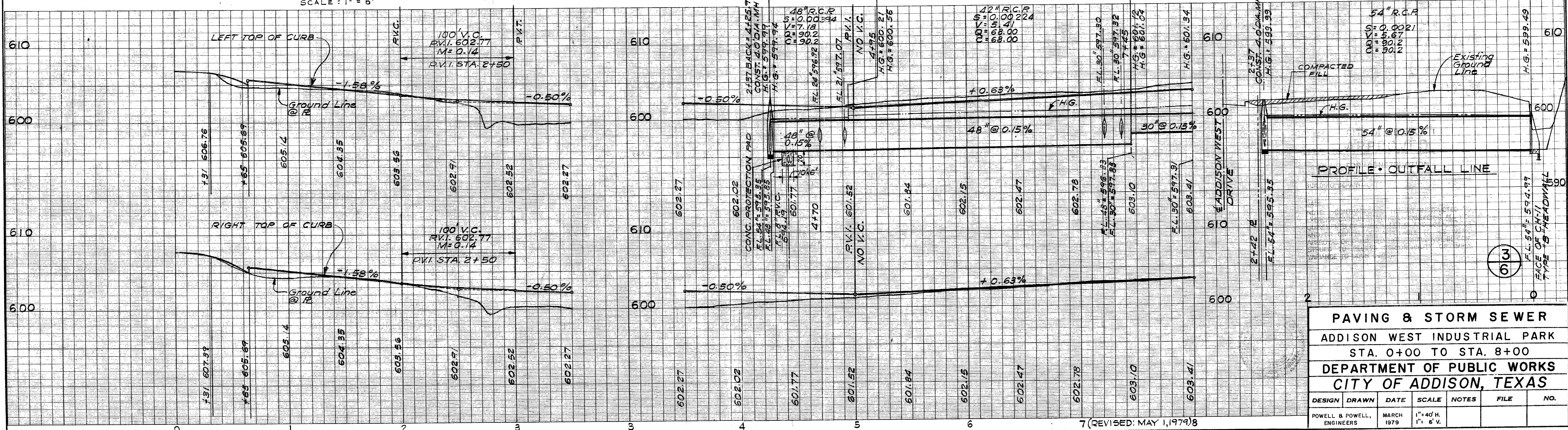
FEBRUARY, 1979
DALLAS, TEXAS
2908-79-1-1.1



TYPICAL PAVING SECTION
 SCALE: 1" = 6'

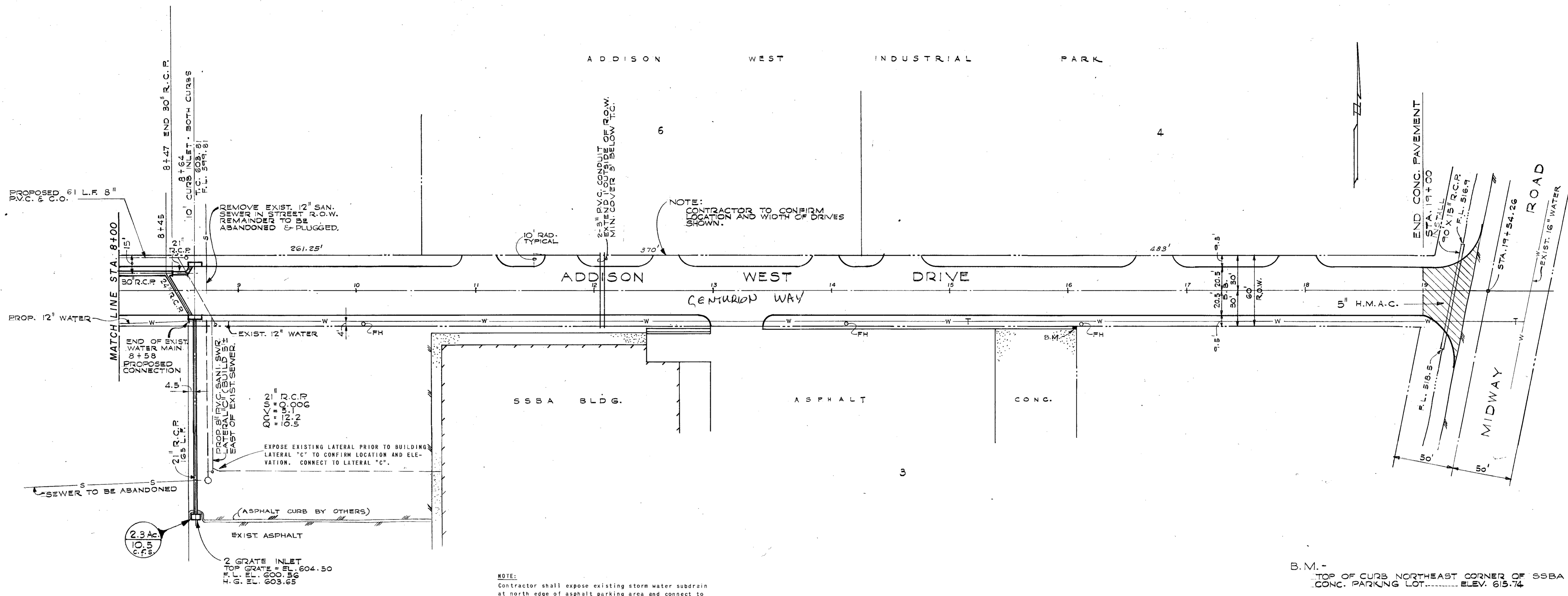


INSERT
 OUTFALL LINE
 SCALE: 1" = 40'



PAVING & STORM SEWER
 ADDISON WEST INDUSTRIAL PARK
 STA. 0+00 TO STA. 8+00
 DEPARTMENT OF PUBLIC WORKS
 CITY OF ADDISON, TEXAS

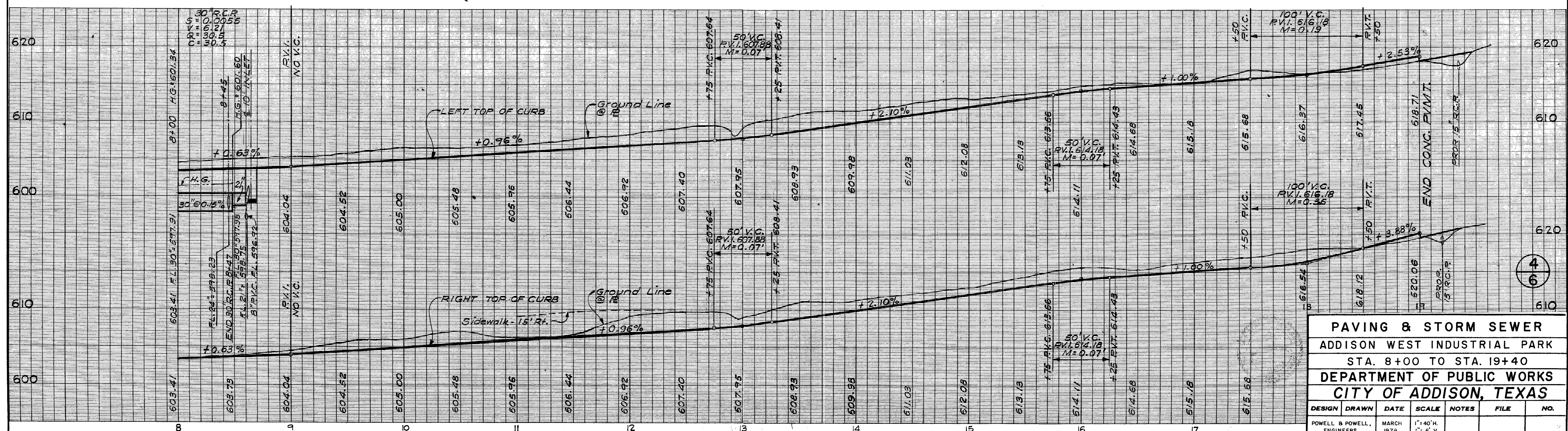
DESIGN	DRAWN	DATE	SCALE	NOTES	FILE	NO.
POWELL & POWELL, ENGINEERS		MARCH 1979	1" = 40' H. 1" = 6' V.			



NOTE:
Contractor shall expose existing storm water subdrain at north edge of asphalt parking area and connect to the grate inlet or to the 21" R.C.P.

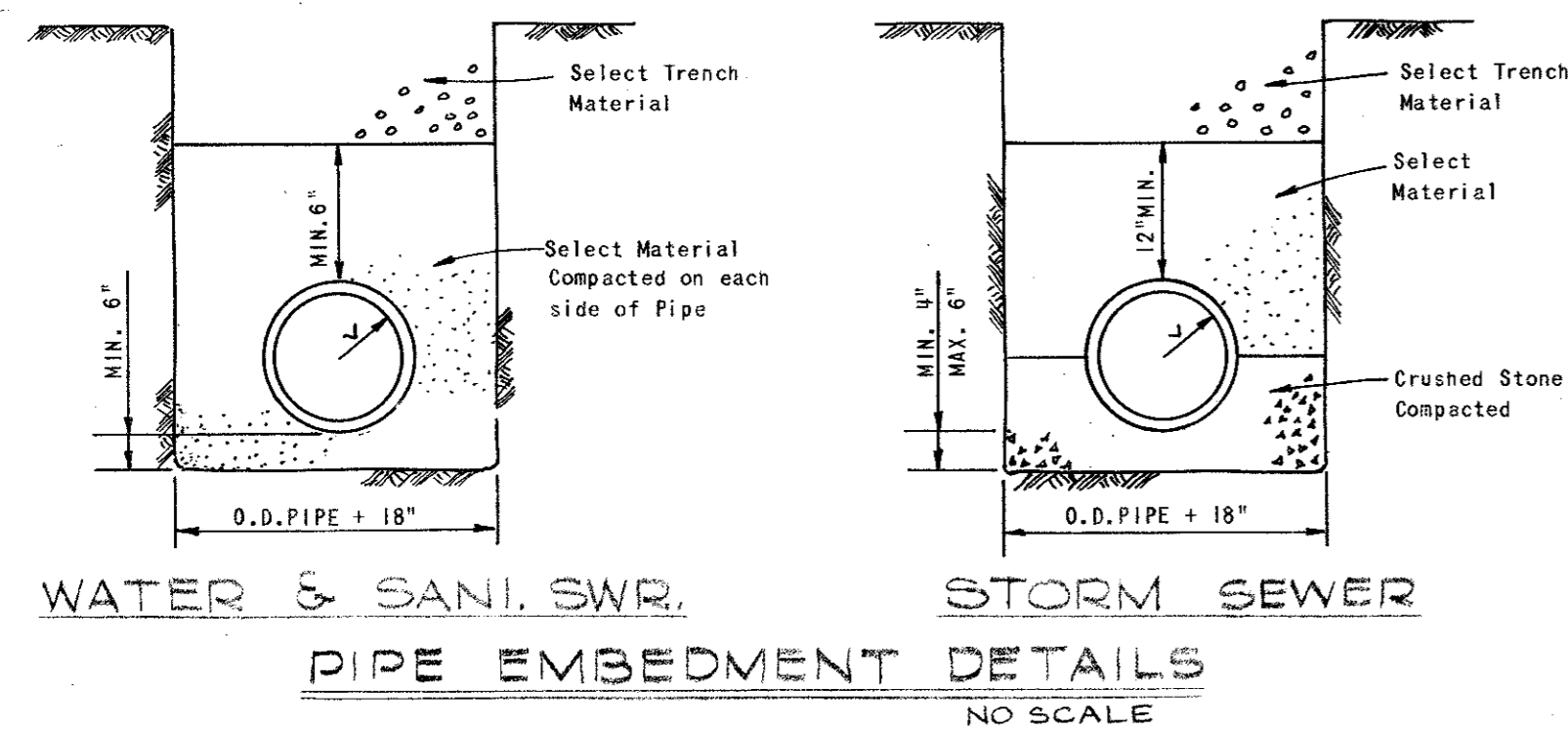
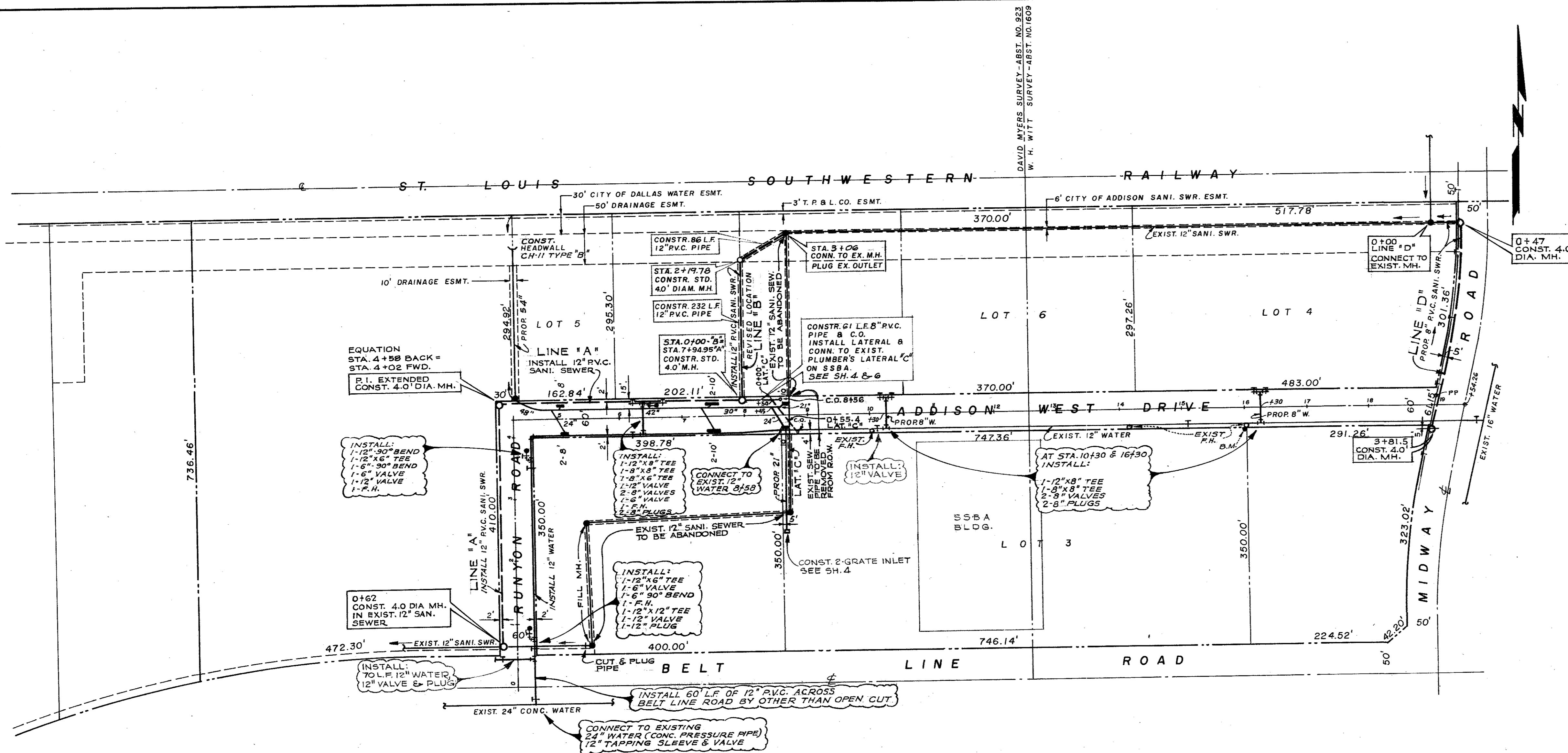
B.M. -
TOP OF CURB NORTHEAST CORNER OF SSBA CONC. PARKING LOT.....ELEV. 615.74

REVISED: MAY 1, 1979



PAVING & STORM SEWER
ADDISON WEST INDUSTRIAL PARK
STA. 8+00 TO STA. 19+40
DEPARTMENT OF PUBLIC WORKS
CITY OF ADDISON, TEXAS

DESIGN	DRAWN	DATE	SCALE	NOTES	FILE	NO.
POWELL & POWELL, ENGINEERS		MARCH 1979	1"=40' H. / 1"=6' V.			

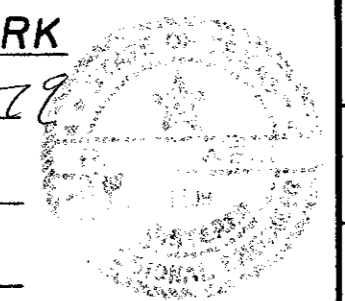


CITY OF ADDISON
APPROVED
 FOR CONSTRUCTION

NOTE: CONTRACTOR SHALL BE RESPONSIBLE TO MAINTAIN ALL UTILITIES AND TO OBTAIN ALL NECESSARY PERMITS AND APPROVALS FROM THE CITY OF ADDISON AND THE STATE OF TEXAS. THE CONTRACTOR SHALL BE RESPONSIBLE FOR OBTAINING ALL NECESSARY PERMITS AND APPROVALS FROM THE CITY OF ADDISON AND THE STATE OF TEXAS.

BENCH MARK: TOP OF CURB NORTHEAST CORNER OF CONCRETE PARKING LOT. ON SSBA PROPERTY. ELEV. 615.74.

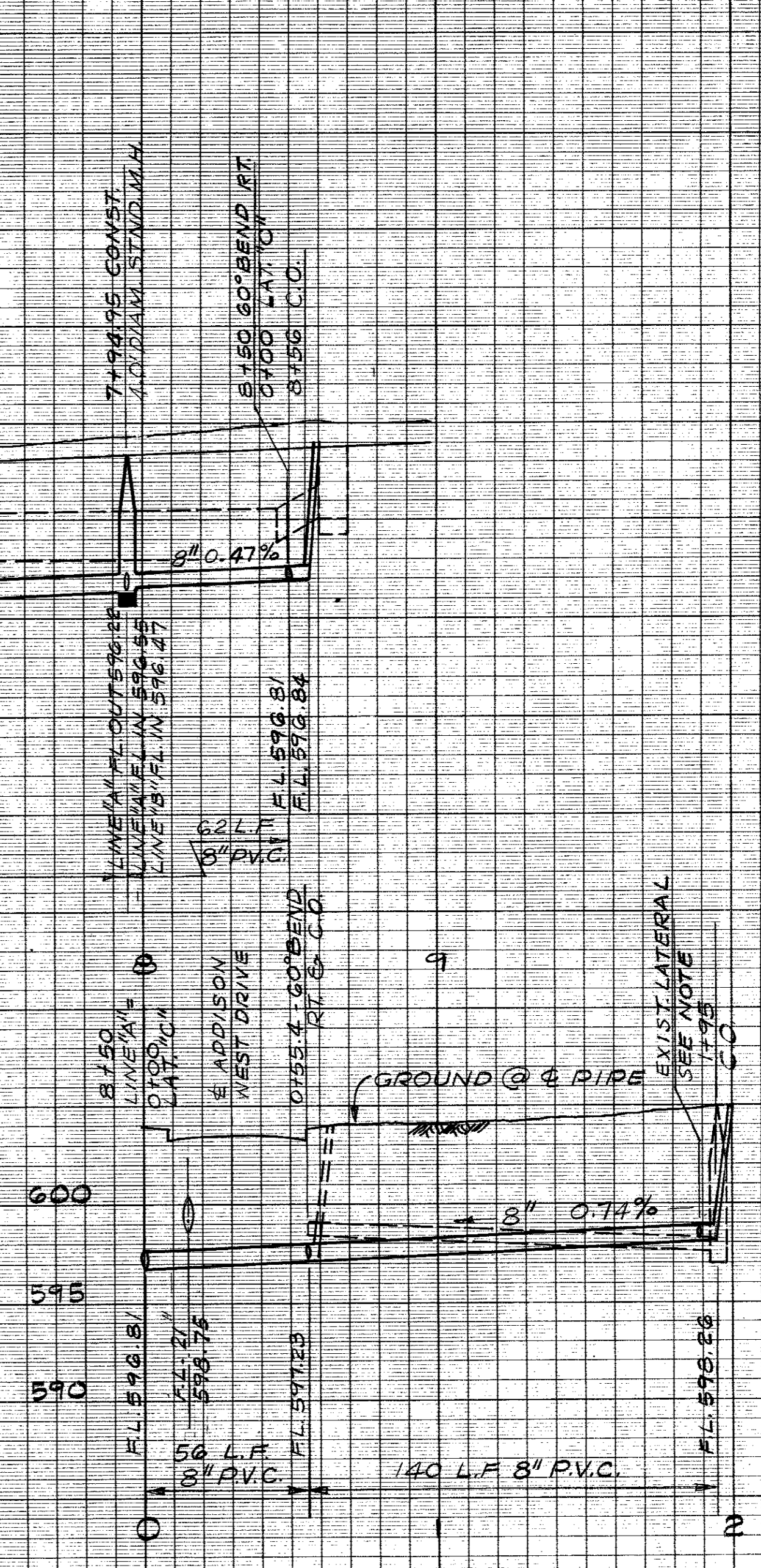
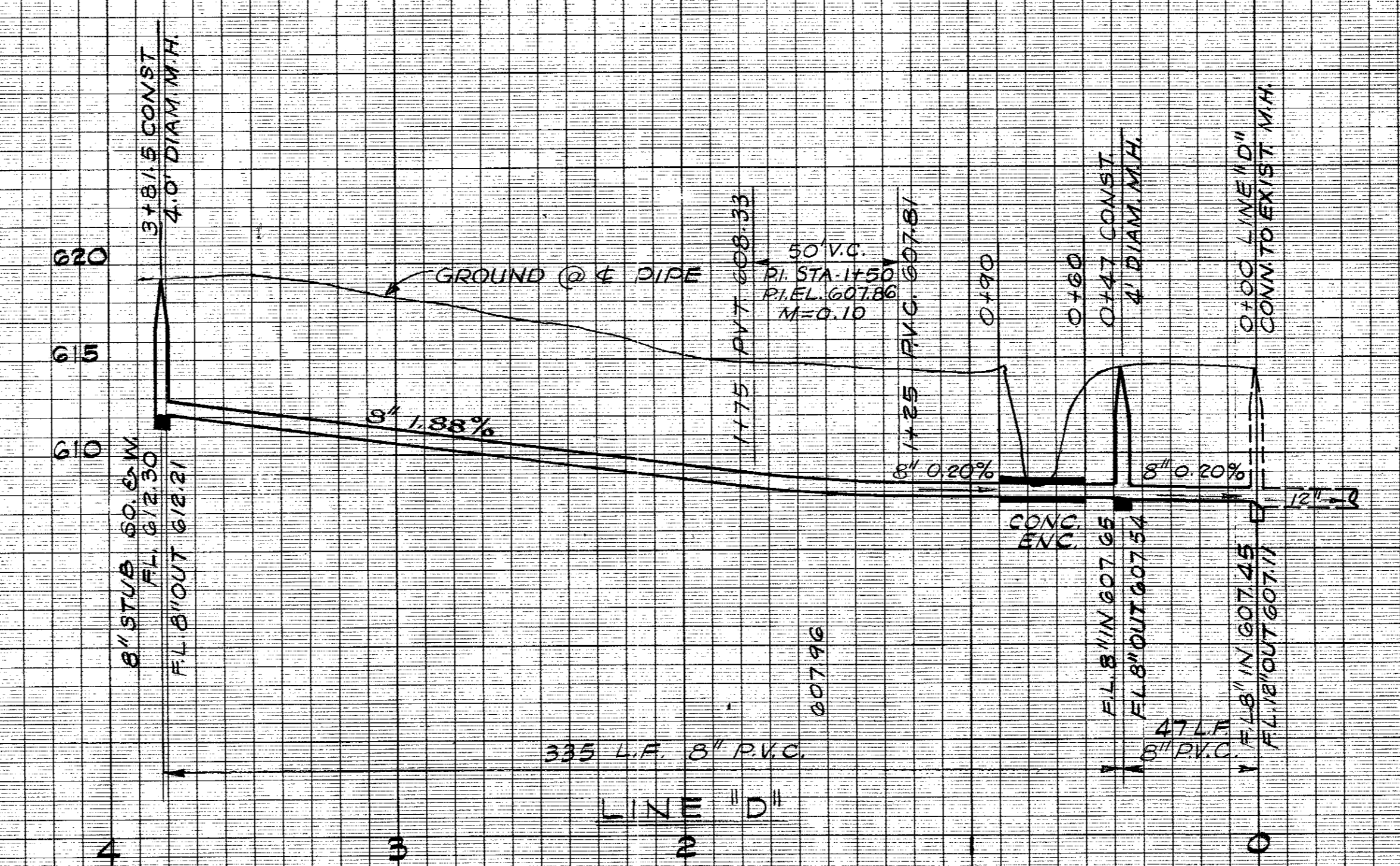
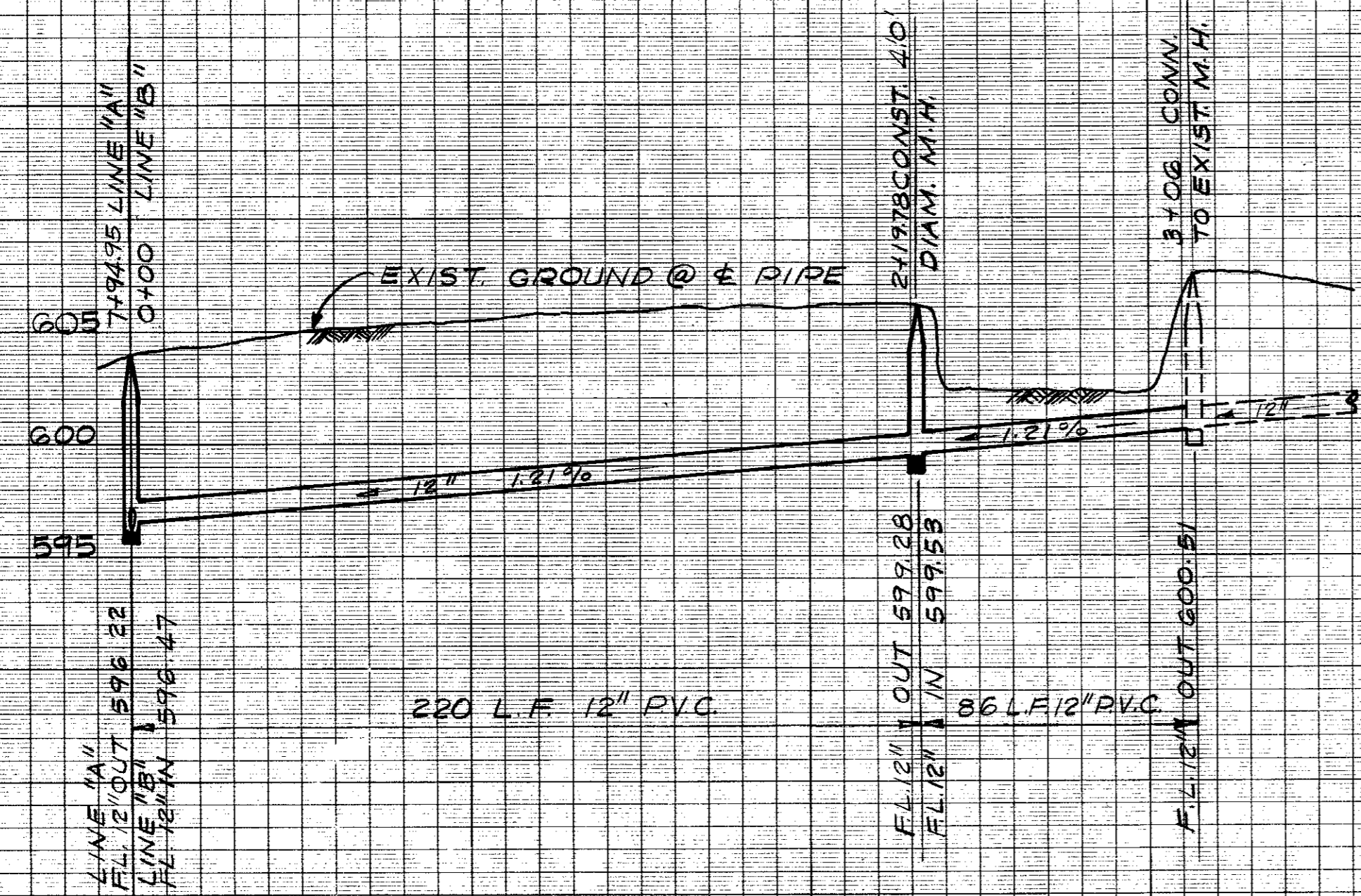
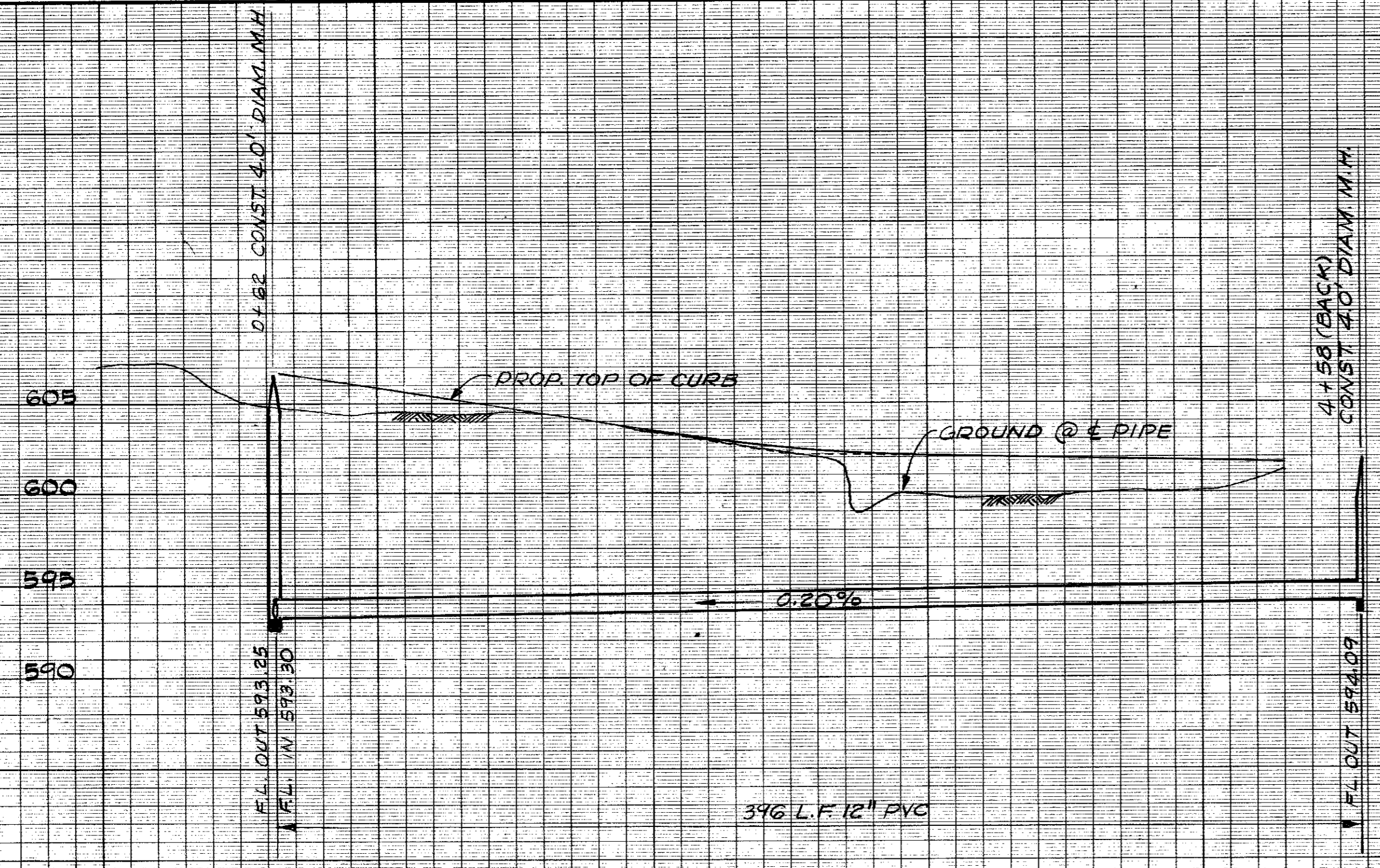
SUBDIVISION: ADDISON WEST INDUSTRIAL PARK
 DESIGNED: *[Signature]* Date: 5-1-78
 R.O.W. APPROVED: _____ Date: _____
 ENGINEER OF DESIGN: _____ Date: _____
 CONTRACT NO. _____



CITY OF ADDISON, TEXAS ADDISON WEST INDUSTRIAL PARK
WATER - SANITARY SEWER
WATER UTILITIES DEPARTMENT
SCALE: 1" = 100'
POWELL & POWELL, ENGINEERS 430 ONE LEMMON PARK NORTH DALLAS, TEXAS 2908-79-1-1.1

REVISED: MAY 1, 1979

5
6



CITY OF ADDISON
APPROVED
FOR CONSTRUCTION

BUILDING DEPARTMENT

DATE: _____

NOTE: CONTRACTOR IS HEREBY INSTRUCTED TO EXERCISE CARE IN ALL WORK AND OBSERVING ALL REQUIREMENTS OF BOTH NATIONAL AND LOCAL CODES AND/OR ORDINANCES APPLICABLE TO HIS WORK. APPROVAL OF THESE DRAWINGS SHALL NOT BE CONSIDERED TO RELIEVE RESPONSIBILITY OR IMPLY WARRANTY TO SUCH CODES.

BENCH MARK: TOP OF CURB N.E. CORNER OF CONC. PARKING LOT 558A
ELEV. 615.74

SUBDIVISION: ADDISON WEST INDUSTRIAL PARK
DESIGNED: Powell & Powell, Engineers Date: 5-1-79
R.O.W. APPROVED: _____ Date: _____
ENGINEER OF DESIGN: _____ Date: _____
CONTRACT NO. _____

SANITARY SEWER PROFILES
ADDISON WEST INDUSTRIAL PARK
WATER UTILITIES DEPARTMENT
CITY OF ADDISON, TEXAS

DESIGN	DRAWN	DATE	SCALE	NOTES	FILE	NO.
POWELL & POWELL, ENGINEERS		MARCH 1979	1" = 40' H. 1" = 6' V.			

REVISED: MAY 1, 1979