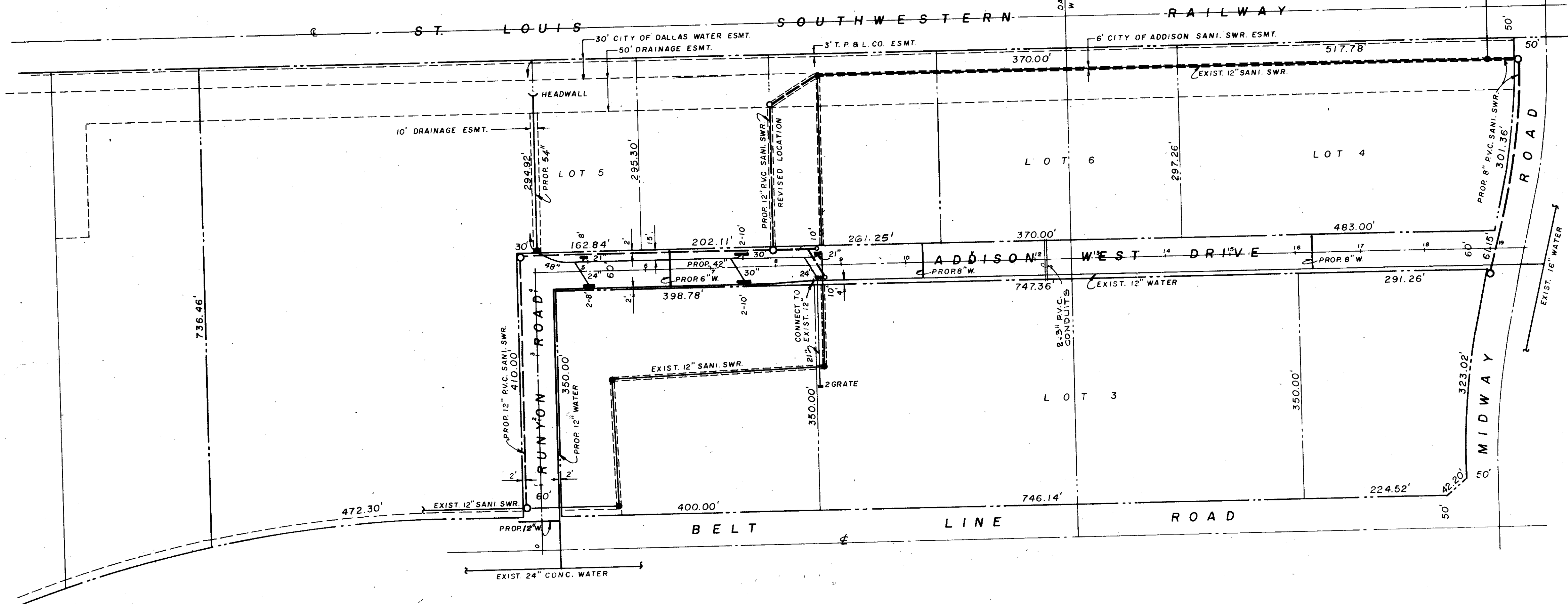


DAVID MYERS SURVEY-ABST. NO. 893
W. H. WITT SURVEY-ABST. NO. 1609



- GENERAL NOTES**
1. PAVEMENT TO BE 4" BACK-TO-BACK, 6"-3000 PSI REINFORCED CONCRETE WITH 6" CURBS AND 5" CROWN.
 2. LIME WILL BE REQUIRED IN SUBGRADE IF P.I. IS GREATER THAN 10. CONTRACTOR TO PROVIDE TWO TESTS.
 3. ALL STORM DRAIN PIPE TO BE CLASS III R.C.P.
 4. ALL SEWER PIPE WILL BE PVC SDR-35.
 5. ALL WATER PIPE WILL BE PVC DR-18 (AWWA C900, TABLE 2) WITH TRACER WIRE - 12 GA. OR LARGER.
 6. FIRE HYDRANTS WILL BE MUELLER CENTURIAN.
 7. FILL ALL AREAS SOUTH AND EAST OF RIGHT-OF-WAY AND AS INDICATED ON PLAN TO ELEVATION 602.04.
 8. ALL CONSTRUCTION SHALL CONFORM TO CITY OF ADDISON STANDARDS AND SPECIFICATIONS.
 9. SLEEVES REQUIRED AT STATIONS 0+30 AND 16+30. FOR WATER LINE CUT-INS WILL BE PAID FOR AS FITTINGS.
 10. EXISTING 12" SANITARY SEWER MUST REMAIN IN SERVICE UNTIL NEW SEWER CONSTRUCTION HAS BEEN COMPLETED AND ACCEPTED.

7/16/78
224-531
97 D 68

- INDEX •
1. COVER SHEET
 2. DRAINAGE AREA MAP
 3. PAVING & STORM SEWER, PLAN & PROFILE, STA. 0+00 TO STA. 8+00
 4. PAVING & STORM SEWER, PLAN & PROFILE, STA. 8+00 TO STA. 19+40
 5. WATER & SANITARY SEWER PLAN
 6. SANITARY SEWER PROFILE

CITY OF ADDISON
APPROVED
FOR CONSTRUCTION
[Signature]
BUILDING DEPARTMENT
5-18-79

NOTE: CONTRACTOR IS HEREBY INSTRUCTED TO EXERCISE CARE IN MEETING OR EXCEEDING ALL REQUIREMENTS OF BOTH NATIONAL AND LOCAL CODES AND/OR ORDINANCES APPLICABLE TO HIS WORK. APPROVAL OF THESE DRAWINGS SHALL NOT BE CONSTRUED TO RELIEVE RESPONSIBILITY OR IMPLY VARIANCE TO SUCH CODES.

1/6

BENCH MARK: TOP OF CURB NORTHEAST CORNER OF CONCRETE PARKING LOT.
ELEV. 615.74.

CITY OF ADDISON, TEXAS ADDISON WEST INDUSTRIAL PARK	
IMPROVEMENT PLANS	
SCALE: 1" = 100'	
POWELL & POWELL, ENGINEERS 430 ONE LEMMON PARK NORTH DWG. NO. S-641.1	FEBRUARY, 1979 DALLAS, TEXAS 2908-79-1-1.1

REVISED: MAY 1, 1979