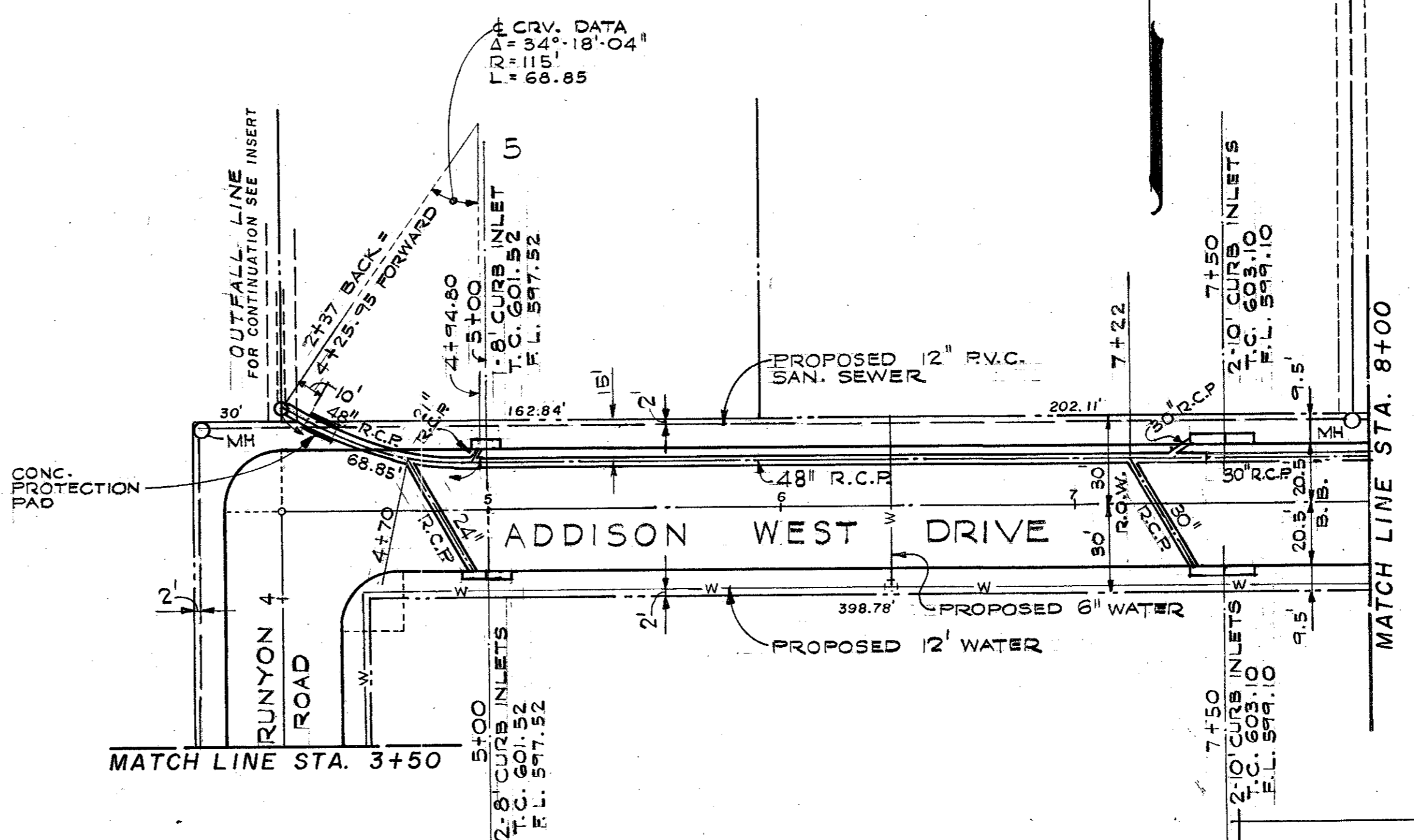
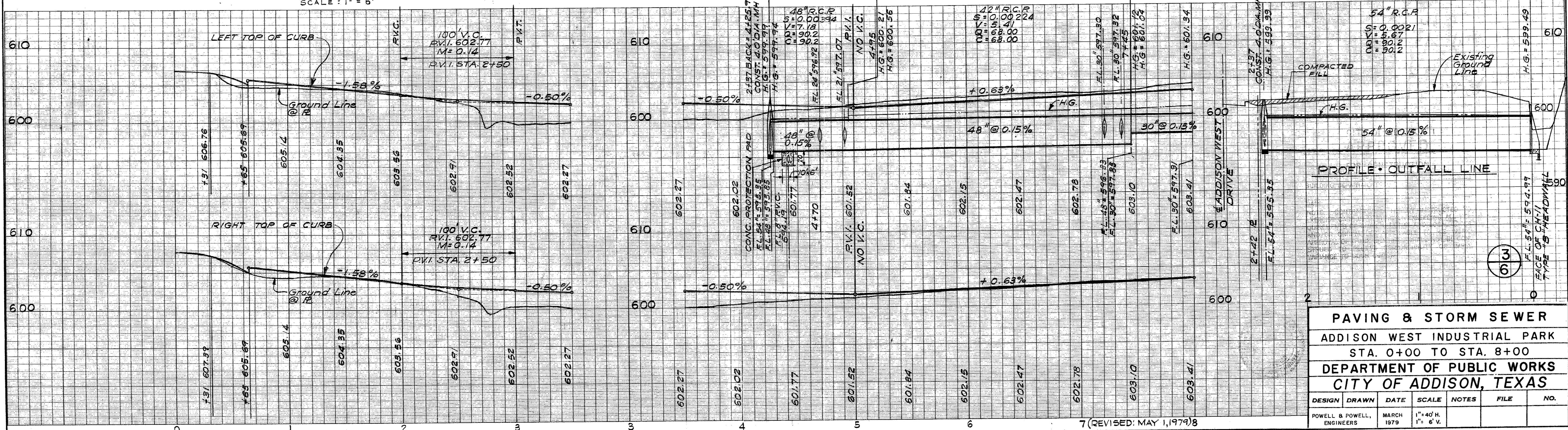


TYPICAL PAVING SECTION  
 SCALE: 1" = 6'



INSERT  
 OUTFALL LINE  
 SCALE: 1" = 40'



PAVING & STORM SEWER  
 ADDISON WEST INDUSTRIAL PARK  
 STA. 0+00 TO STA. 8+00  
 DEPARTMENT OF PUBLIC WORKS  
 CITY OF ADDISON, TEXAS

DESIGN	DRAWN	DATE	SCALE	NOTES	FILE	NO.
POWELL & POWELL, ENGINEERS		MARCH 1979	1" = 40' H. 1" = 6' V.			