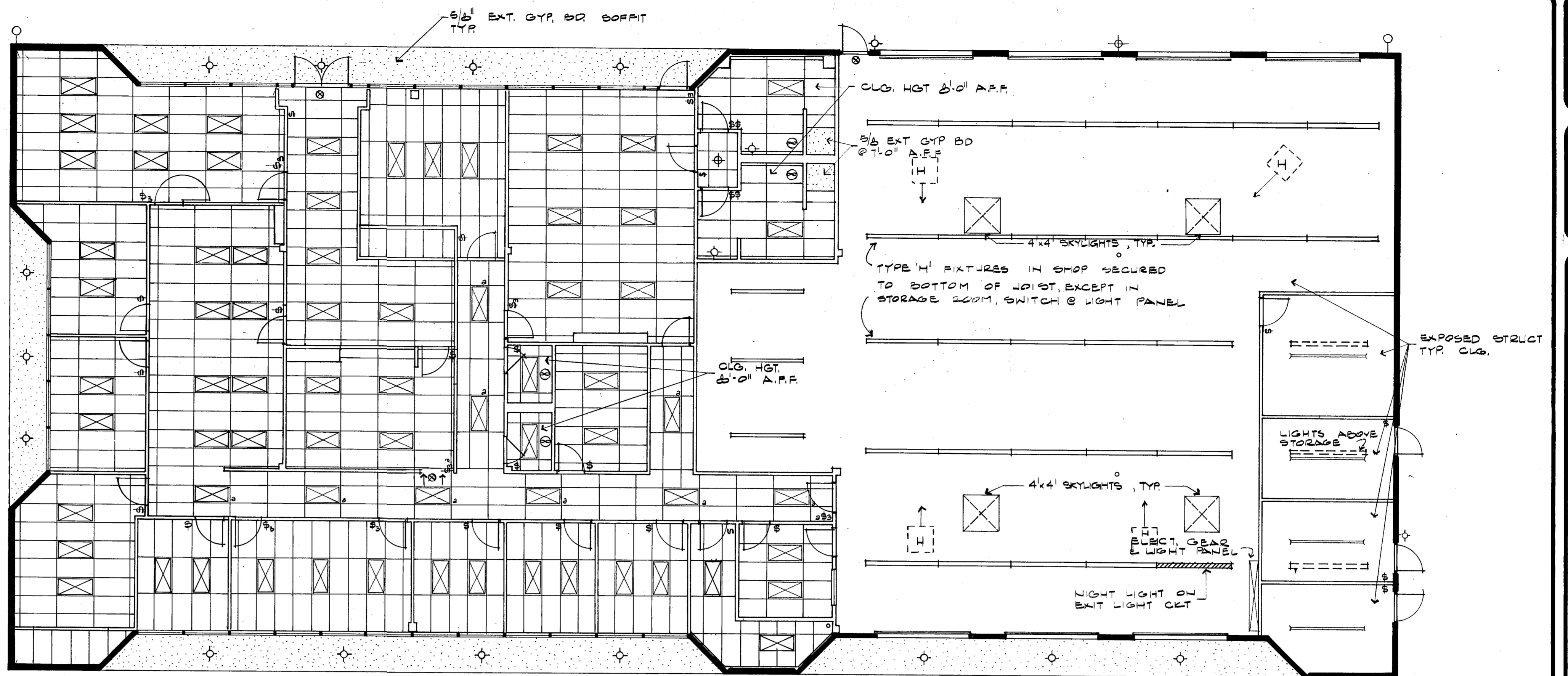


LEGEND

MARK (MECH. SPEC)	SYMBOL	DESCRIPTION
A		2' x 4' x 4' LAMP, RECESSED TROFFERS
H		B' STRIP - 2 LAMP
F		RECESSED DOWNLIGHTS ON TIMER
B		RECESSED DOWNLIGHTS
C		WALL-MOUNT INCANDESCENT
D		WALL-MOUNT SECURITY ON TIMER (EAT. LIGHTING)
G		WALL-MOUNT SECURITY LIGHT
		EXHAUST FAN
		SWITCH
		SWITCH - THREE WAY
		EXIT LIGHT ON EMERGENCY CKT

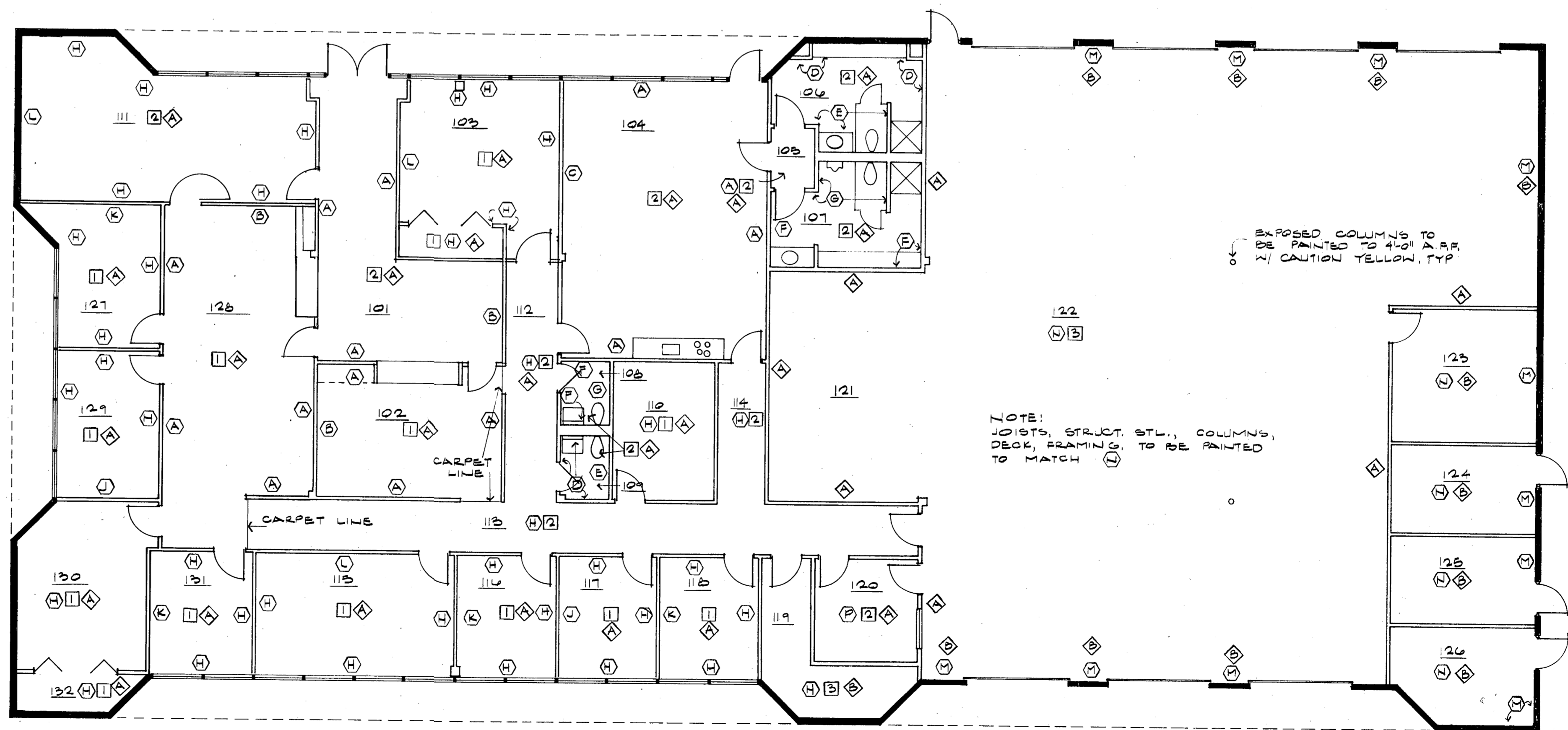


01 REFLECTED CEILING PLAN
SC: 1/8" = 1'-0"

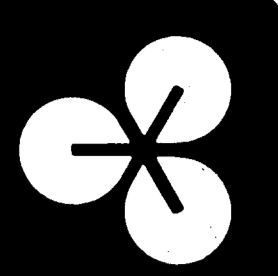
NOTE: ALL CLO. HGT TO BE 9'-0" A.P.F. UNLESS NOTED.

- WALLS**
- (A) VINYL - BOLTAWALL SANDSTONE PARCHMENT 8-041
 - (B) VINYL - " " " RED EARTH 8-012
 - (C) VINYL - " " " HARBOR BLUE 8-082
 - (D) VINYL - STRIPES & TEXTURES DENIM FE-8748
 - (E) VINYL - " " " " FE-8749
 - (F) VINYL - " " " " FE-8750
 - (G) VINYL - " " " " FE-8751
 - (H) PAINT - JONES - BLAIR 1-36-0X DEVON BROWN
 - (I) PAINT - " " " 3-36-0N MADEIRA
 - (J) PAINT - " " " 3-33-0N TOBACCO
 - (K) PAINT - " " " 3-37-4Z MAYFAIR TAN
 - (L) EXPOSED CONCRETE PANELS
 - (M) 1/4" MASSONITE HARDBOARD WAINSCOT TO 4'-0" A.P.F.
N/ PAINT - GLODOL 1541 OPP. WHITE SEMI-GLOSS ENAMEL
 - (N) VINYL - GELON STIPPLE TYPE II 82508 HEMP

- FLOORS**
- (1) CARPET - BIGELOW STATI-TUFT #GUT-83316 WHEATFIELD
 - (2) SHEET VINYL - ARMSTRONG VINYL CORLON, NEW ERA #84011
 - (3) SEALED CONCRETE, SEALER PER SPEC.
 - (4) BASE - KEYCOVER BROWN KC-21
 - (5) BASE - 10LB
 - COUNTER - ROOMS 106, 107 - NEVAMAR MOCHA LEATHER LH-2-7
 - COUNTER - ROOMS 101-102, 104 - NEVAMAR EXECUTIVE LEATHER LH-2-6-L
 - PLAG. LAM. DOORS - NEVAMAR NATURAL FINISH RUSTIC QUARTERED OAK W-8-164



02 FINISH PLAN
SC: 1/8" = 1'-0"



EDI CAPE HOPKINS CLEMENT, INC.
PLANNING - ARCHITECTURE - INTERIOR DESIGN
TWO NORTH PARK EAST, 120 · DALLAS · 214/750-1945
AMERICAN INSTITUTE OF ARCHITECTS · AMER SOC CONSULTING PLANNERS

City of Addison
PUBLIC WORKS SERVICE CENTER
Dooley Road
Addison Texas

ISSUE DATE
6/12/85

REVISIONS

SHEET NUMBER
10
5000,00