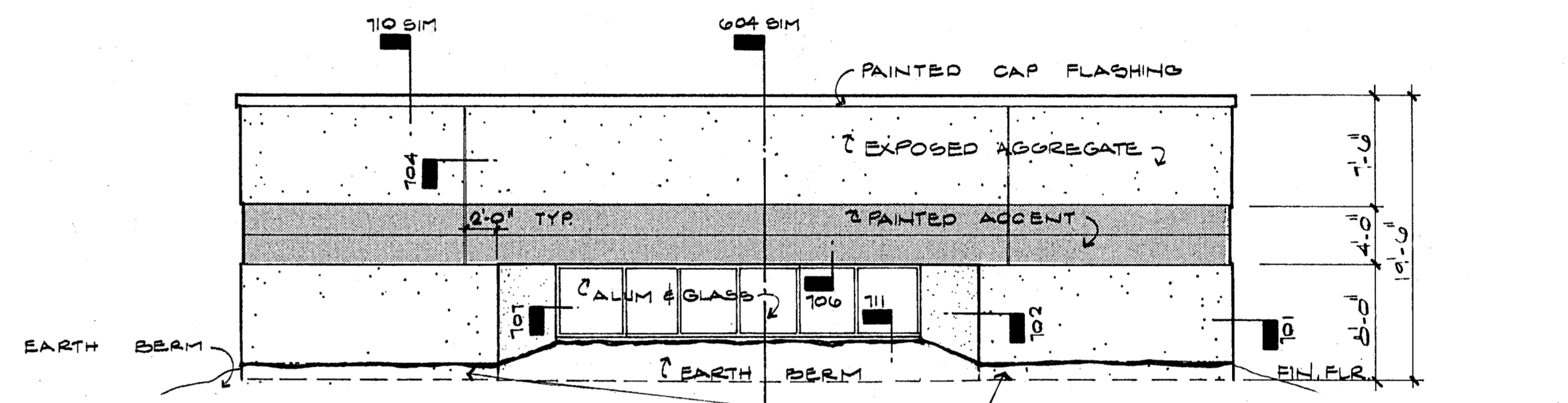
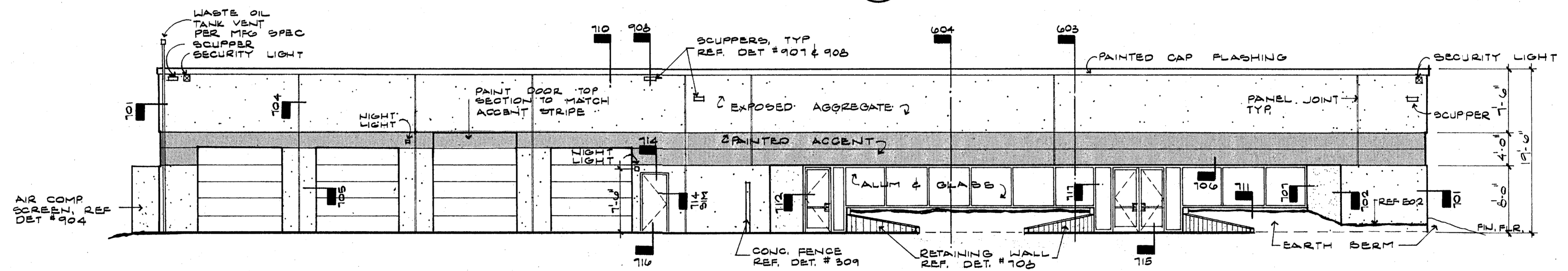


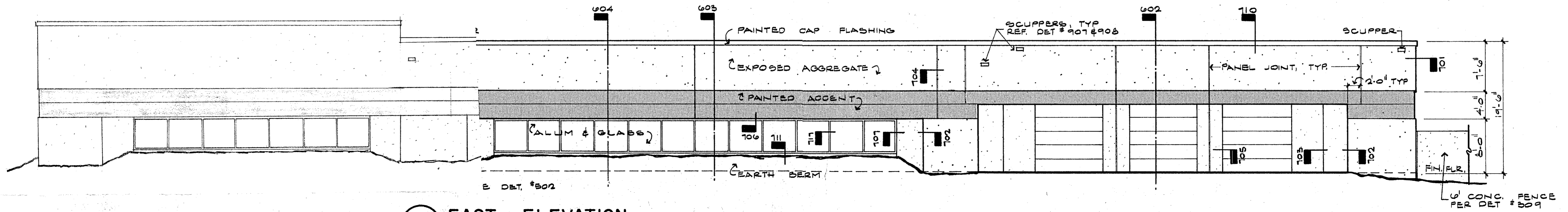
01 NORTH ELEVATION
SC: 1/8" = 1'-0"



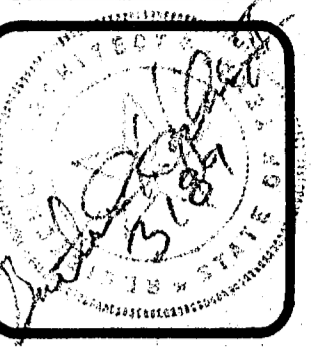
02 SOUTH ELEVATION
SC: 1/8" = 1'-0"



03 WEST ELEVATION
SC: 1/8" = 1'-0"



04 EAST ELEVATION
SC: 1/8" = 1'-0"



EDI CAPE HOPKINS CLEMENT, INC.
PLANNING-ARCHITECTURE-INTERIOR DESIGN
TWO NORTH PARK EAST, 120 · DALLAS · 214 / 750-1945
AMERICAN INSTITUTE OF ARCHITECTS · AMER. SOC. CONSULTING PLANNERS

City of Addison
PUBLIC WORKS SERVICE CENTER
Dooley Road
Addison Texas

ISSUE DATE
6/12/80
REVISIONS

SHEET NUMBER
5
#2000.00