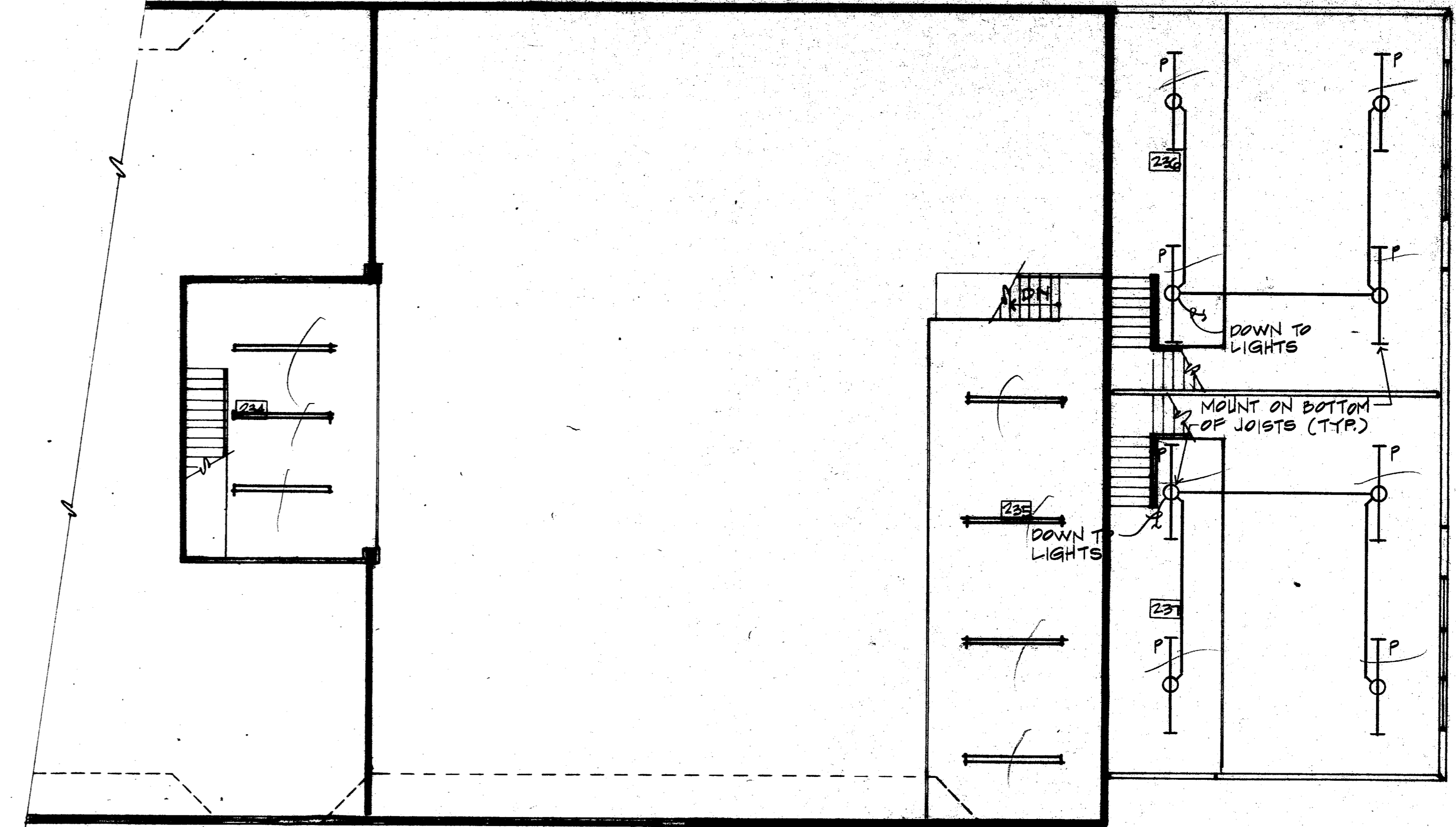


DETAIL OF LIGHT POLE BASE
SCALE: NONE

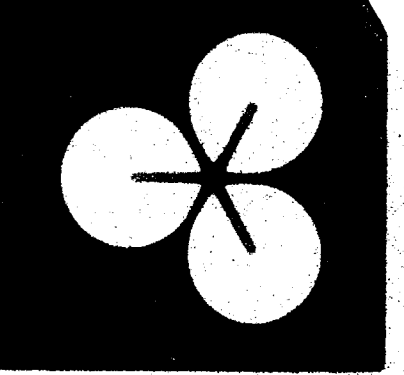
LIGHTING FIXTURE SCHEDULE							
TYPE	MANUFACTURER	CATALOG NUMBER	FINISH	MTO.	LAMPS		NOTES
					NO.	WATTS/DESCRIPTION	
A	KEENE	XL2 6V840-277V	STD.	R	4	40/F40CMT12	
B	KEENE	XL26V8340-277V	STD.	R	3	40/F40CMT12	
C	KEENE	XL26V8240-277V	STD.	R	2	40/F40CMT12	
D	KEENE	XL26V8240-120V	STD.	R	4	40/F40CMT12	
E	NOT USED						
F	KEENE	MPS263D340-277V	STD.	R	3	40/F40CMT12	
G	KEENE	MPS263D340-120V	STD.	R	3	40/F40CMT12	
H	NL	R6888	CLEAR	R	1	150/A-21	
I	NOT USED						
J	NL	R6910	CLEAR	R	1	150/A-21	
K	KEENE	PC1RW-175MH	WHITE	R	1	175/M57PF-175/u	
L	KEENE	C296SL-277V	STD.	P	2	75/F96CMT12	
M	KEENE	C240RS-277V	STD.	P	2	40/F40CMT12	
N	NL	R5100	BLACK	R	1	75/R-40	
O	NOT USED						
P	KEENE	C296SL-120V	STD.	P	2	75/F96CMT12	
Q	KEENE	C240RS-120V	STD.	P	2	40/F40CMT12	
R	CROUSE HINDS	EWX210	STD.	S	1	150/A-21	
S	NOT USED						
T	QUALITY	117-14R-277-RPS-400 W/521-30SL POLE	BRONZE	PL	1	400/CLEAR RPS	
U	CROUSE HINDS	VXHRF-156P	STR.	B	1	150/A-21	
X	LITHONIA	ES 1R-ELC-277	STD.	S		INCLUDED	
XA	LITHONIA	ES 2R-ELC-277	STD.	S		INCLUDED	
XB	LITHONIA	ES 1R-ELC	STD.	S		INCLUDED	

S - SURFACE R - RECESSED P - PENDANT W - WALL PL - POLE B - BRACKET



TOWN OF ADDISON
BUILDER'S COPY OF PLANS
This set of plans contains various corrections and comments made by the City Staff. All trades will be required to comply with these corrections and comments; failure to inform all trades of this information will not be accepted as a reason to approve construction which is in violation of local ordinances.
This set of plans is to be kept on the job site at all times and is to be made available for use by city inspectors at their request. Failure to have these plans available may delay approval of a requested inspection.

01 SECOND FLOOR PLAN - LIGHTING



EDI ARCHITECTS, INC.
ARCHITECTURE PLANNING ENGINEERING INTERIOR DESIGN
8440 WALNUT HILL LANE
SUITE 100 FORT WORTH, TEXAS 76120
TELEPHONE 817-351-1500
FAX 817-351-0700

TOWN OF
ADDISON

**ADDITION TO
PUBLIC WORKS SERVICE CENTER**
Addison Texas
Westgrove Road

11 JUNE 86 -
24 JULY 1986 - BID

E2.4
SHEETS

JOB NO. 851-197