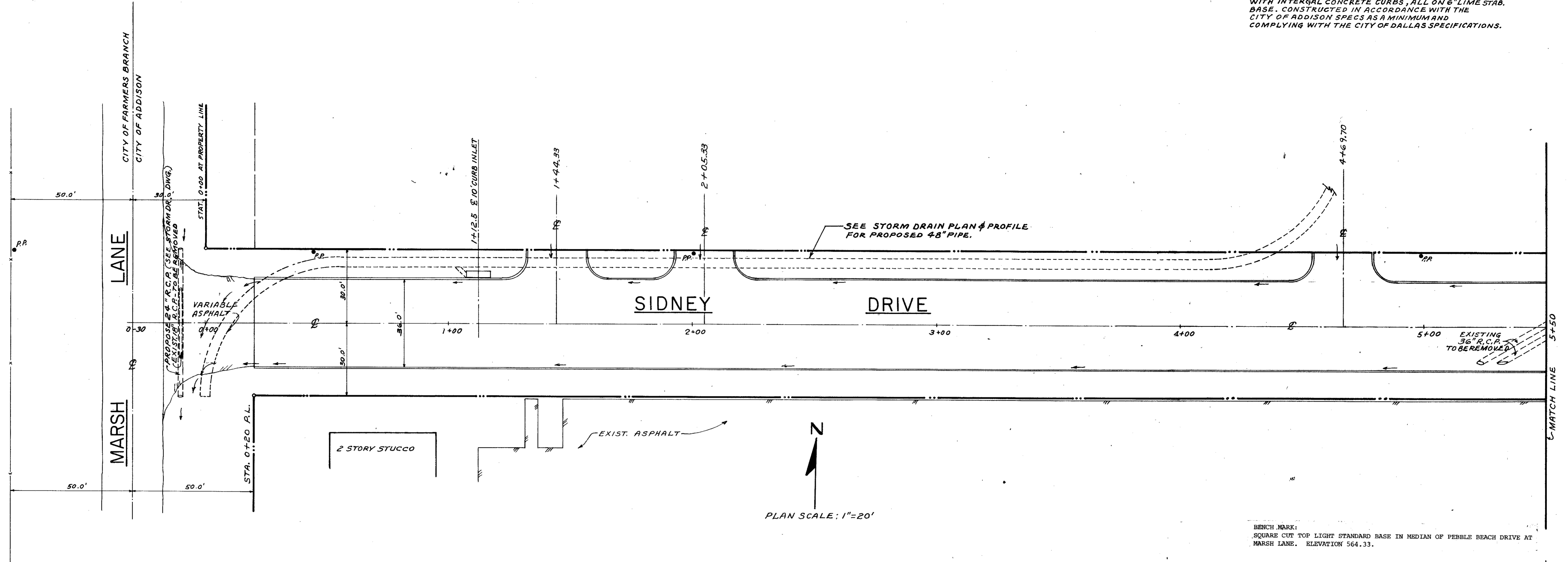
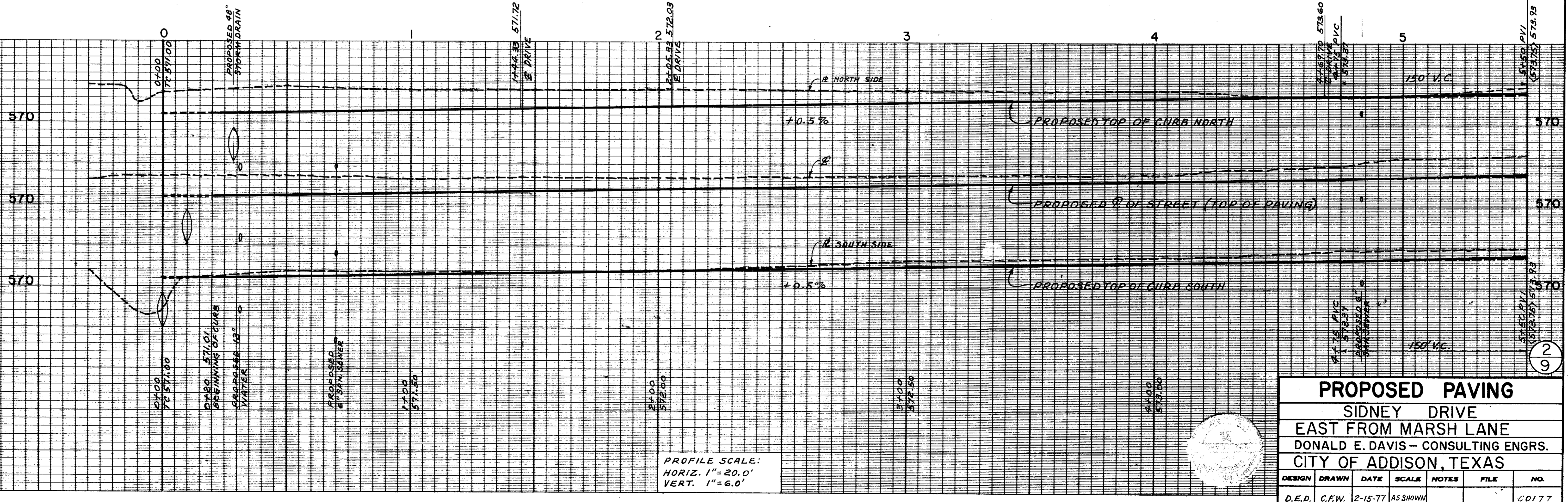


GENERAL NOTE:
 STREET TO BE 36.0' FACE TO FACE, CONCRETE PAVING WITH INTEGRAL CONCRETE CURBS, ALL ON 6" LIME STAB. BASE. CONSTRUCTED IN ACCORDANCE WITH THE CITY OF ADDISON SPECS AS A MINIMUM AND COMPLYING WITH THE CITY OF DALLAS SPECIFICATIONS.



BENCH MARK:
 SQUARE CUT TOP LIGHT STANDARD BASE IN MEDIAN OF PEBBLE BEACH DRIVE AT MARSH LANE. ELEVATION 564.33.



PROFILE SCALE:
 HORIZ. 1"=20.0'
 VERT. 1"=6.0'

PROPOSED PAVING						
SIDNEY DRIVE						
EAST FROM MARSH LANE						
DONALD E. DAVIS - CONSULTING ENGRS.						
CITY OF ADDISON, TEXAS						
DESIGN	DRAWN	DATE	SCALE	NOTES	FILE	NO.
D.E.D.	C.F.W.	2-15-77	AS SHOWN			CD177

2
9