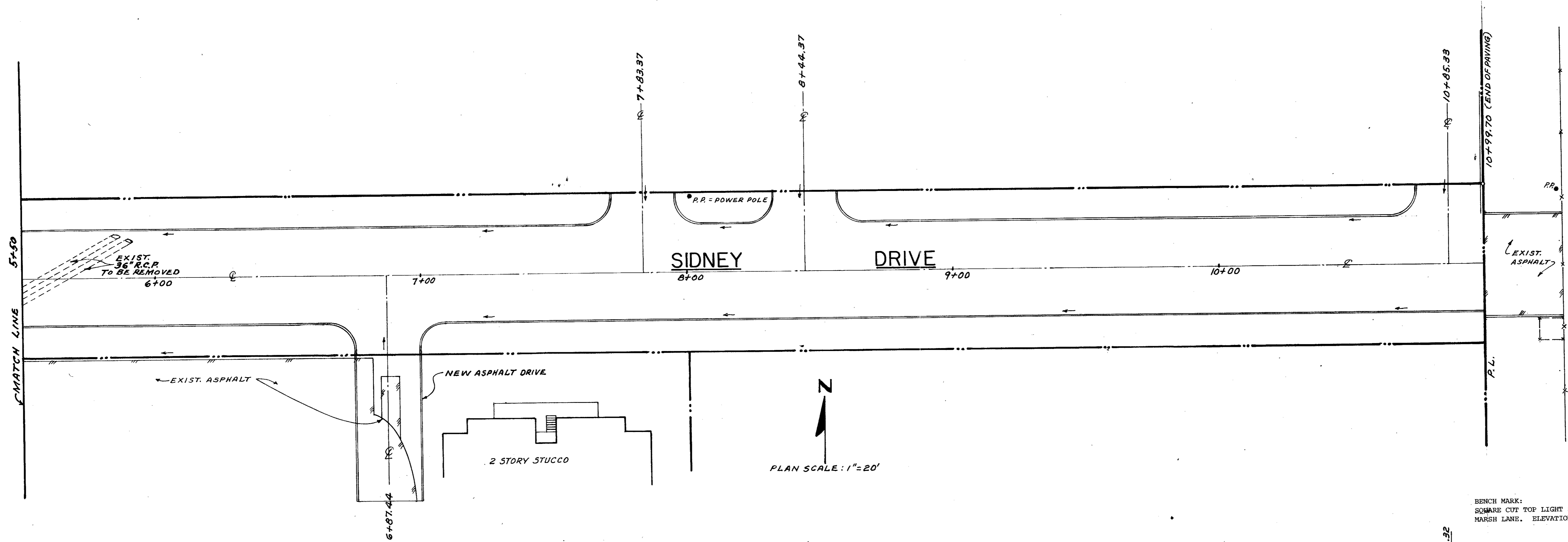
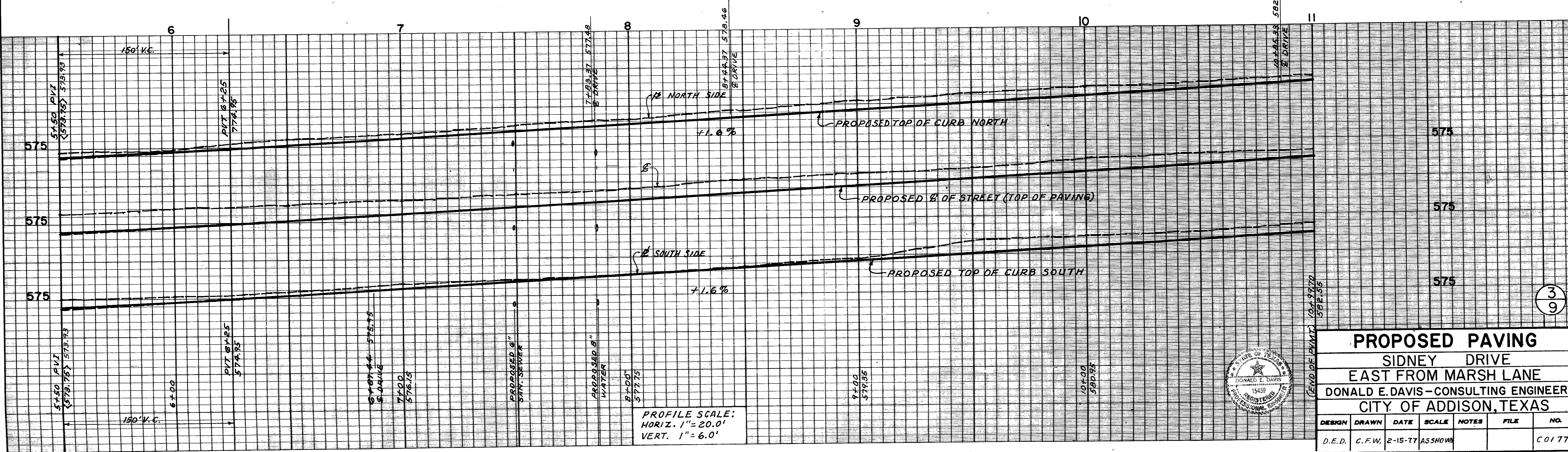


**GENERAL NOTE:**  
 STREET TO BE 36.0' FACE TO FACE CONCRETE PAVING WITH INTERGAL CONCRETE CURBS, ALL ON 6" LIME STAB. BASE. CONSTRUCTED IN ACCORDANCE WITH THE CITY OF ADDISON SPECS. AS A MINIMUM AND COMPLYING WITH THE CITY OF DALLAS SPECIFICATIONS.

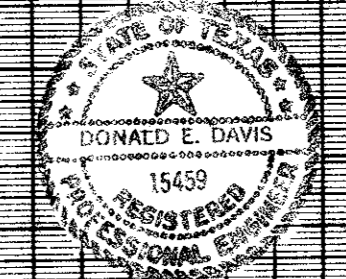


PLAN SCALE: 1"=20'

BENCH MARK:  
 SQUARE CUT TOP LIGHT STANDARD BASE IN MEDIAN OF PEBBLE BEACH DRIVE AT MARSH LANE. ELEVATION 564.33.



PROFILE SCALE:  
 HORIZ. 1"=20.0'  
 VERT. 1"=6.0'



**PROPOSED PAVING**  
 SIDNEY DRIVE  
 EAST FROM MARSH LANE  
 DONALD E. DAVIS - CONSULTING ENGINEERS  
 CITY OF ADDISON, TEXAS

DESIGN	DRAWN	DATE	SCALE	NOTES	FILE	NO.
D.E.D.	C.F.W.	2-15-77	AS SHOWN			C0177

3  
9