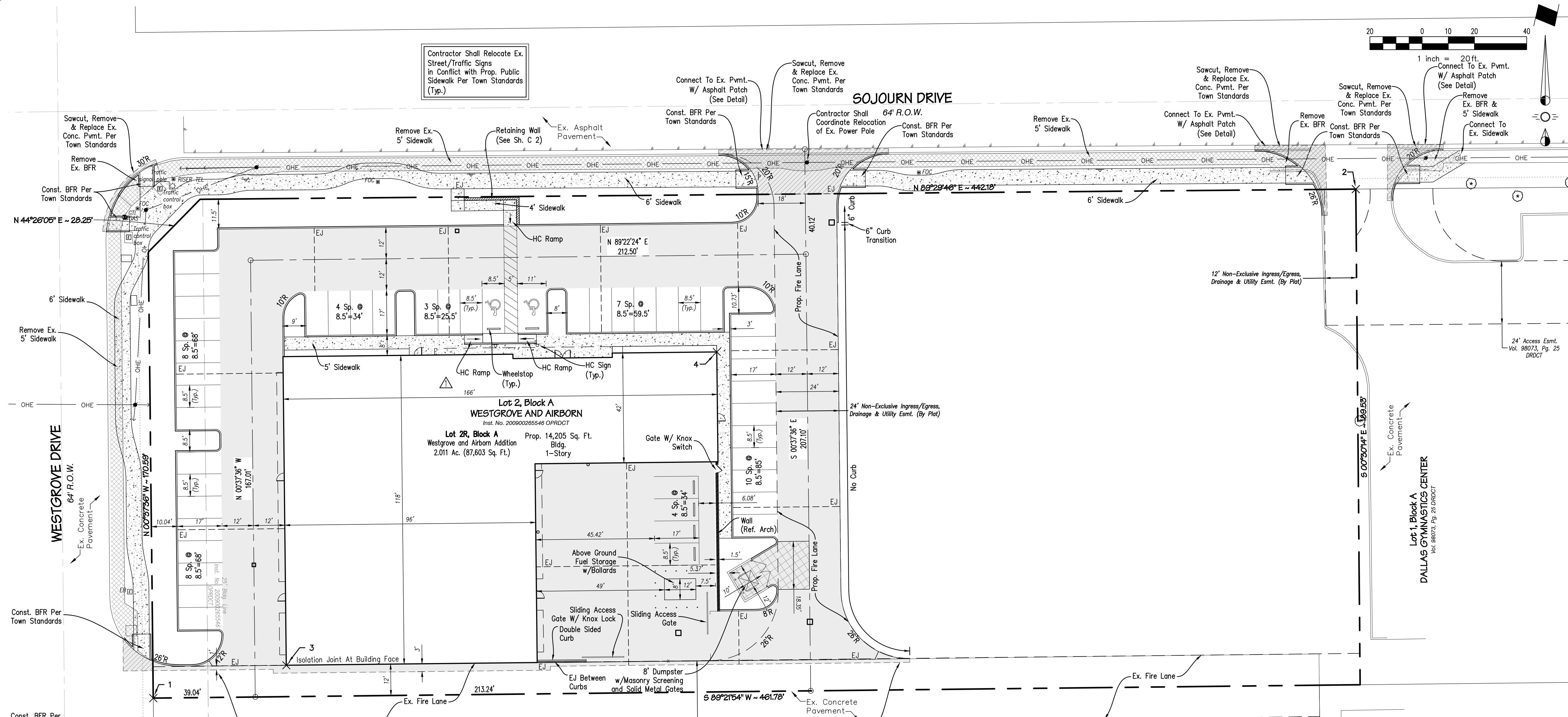


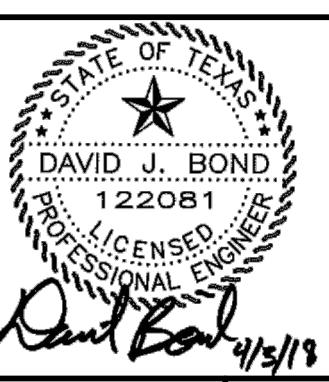
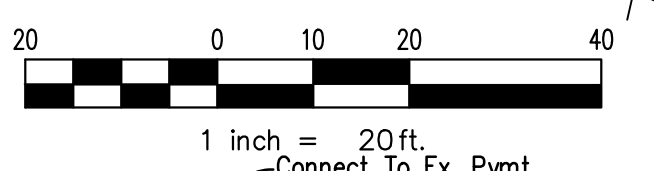
Drawn by: Robert P. Date: 4/1/2016 8:03 AM

Drawn by: Robert P. Date: 4/1/2016 8:03 AM

Drawn by: Robert P. Date: 4/1/2016 8:03 AM



Contractor Shall Relocate Ex. Street/Traffic Signs in Conflict with Prop. Public Sidewalk Per Town Standards (Typ.)



KNIGHT RENOVATIONS
 LOT 2R, BLOCK A
 TOWN OF ADDISON
 DALLAS COUNTY, TEXAS
 PAVING & HORIZONTAL CONTROL PLAN

Issue Dates:
 September 16, 2016

Date	Revisions
04-05-17	Plan Revisions (Ex. W. Location)

Scale: As Shown
 Drawn By: BLM
 Checked By: JWS

Sheet **C 1**
 of **10**

SEI No. 16-036

PAVING GENERAL NOTES

- All materials and construction shall conform to the Town of Addison standards and specifications.
- It shall be the responsibility of the Contractor to protect all public utilities in the construction of this project. All manholes, cleanouts, valve boxes, fire hydrants, etc. must be adjusted to proper line and grade by the Contractor prior to and after the placing of permanent paving. All utilities must be maintained to proper line and grade during construction of this project.
- The Contractor shall be responsible for coordinating with all appropriate utility companies for the location of all utilities within the construction area.
- The Paving Contractor shall coordinate with the Utility Contractor to insure all sleeving for irrigation has been installed prior to placement of permanent pavement.
- All curbs shall be 6" standard except where otherwise noted on plans.
- All paving and earthwork operations shall conform to the recommendations in the Geotechnical Investigation Report. (Report No. 21233, Reed Engineering, July, 2016)
- All dimensions are to the face of curb, or the edge of building.
- See Architectural Plans for exact building and related sidewalk dimensions.
- All curb radii are 2' unless noted otherwise.
- All parking spaces are 8.5' x 17' unless noted otherwise.
- Contractor shall install handicap signage adjacent to back of curb at all handicap parking spaces.
- Fire lanes shall be striped in accordance with Town of Addison Standards.
- Fences, berms walls, shrubs, trees, signs, structures, etc. are limited to a maximum height of 2 feet above the adjacent curb within visibility easements.
- Contractor shall install traffic control for any work within R.O.W. to conform to part VI of the "Texas Manual on Uniform Traffic Control Devices."

Point #	Northing	Easting
1	7044493.20	2477854.12
2	7044687.85	2478314.20
3	7044505.78	2477905.02
4	7044625.59	2478069.72

PAVEMENT LEGEND

- Remove Existing Concrete Pavement
- 4" Class "A" Conc. Pavement W/#3 @ 18" O.C.E.W.
- 5" 3000 psi Conc. Pavement W/#3 @ 184" O.C.E.W. Over 6" Compacted Subgrade (Parking)
- 6" 4000 psi Conc. Pavement W/#3 @ 18" O.C.E.W. Over 6" Compacted Subgrade
- 7" 4000 psi Conc. Pavement W/#3 @ 18" O.C.E.W. Over 6" Compacted Subgrade
- 8" 4000 psi Conc. Pavement W/#3 @ 18" O.C.E.W. Over 6" Compacted Subgrade (Town R.O.W.)
- Curb & Gutter
- No Curb
- Const. Barrier Free Ramp
- Coordinate
- Expansion Joint
- Fence

RECORD DRAWINGS

NOTE: THESE PLANS HAVE BEEN REVISED TO CONFORM WITH CONSTRUCTION RECORDS PROVIDED BY THE CONTRACTOR.

- BENCHMARKS:
- "X" cut found in concrete ramp at southeast corner of the intersection of Westgrove and Sojourn. Elev.=661.09'
 - "X" cut found for southwest property corner. Elev.=661.15'

CAUTION !!!
EXISTING UTILITIES

EXISTING UTILITIES AND UNDERGROUND FACILITIES INDICATED ON THESE PLANS HAVE BEEN LOCATED FROM REFERENCE INFORMATION. IT SHALL BE THE RESPONSIBILITY OF THE CONTRACTOR TO VERIFY BOTH HORIZONTALLY AND VERTICALLY THE LOCATION OF ALL EXISTING UTILITIES AND UNDERGROUND FACILITIES PRIOR TO CONSTRUCTION, TO TAKE NECESSARY PRECAUTIONS IN ORDER TO PROTECT ALL FACILITIES ENCOUNTERED. THE CONTRACTOR SHALL PRESERVE AND PROTECT ALL EXISTING UTILITIES FROM DAMAGE DURING CONSTRUCTION.

CALL 1-800-344-8377 (DIG-TESS) OR OTHER UTILITY LOCATION SERVICES 48 HOURS PRIOR TO CONSTRUCTION ACTIVITY. SPIARS ENGINEERING, INC. IS NOT RESPONSIBLE FOR KNOWING ALL EXISTING UTILITIES OR DEPICTING EXACT LOCATIONS OF UTILITIES ON DRAWINGS.