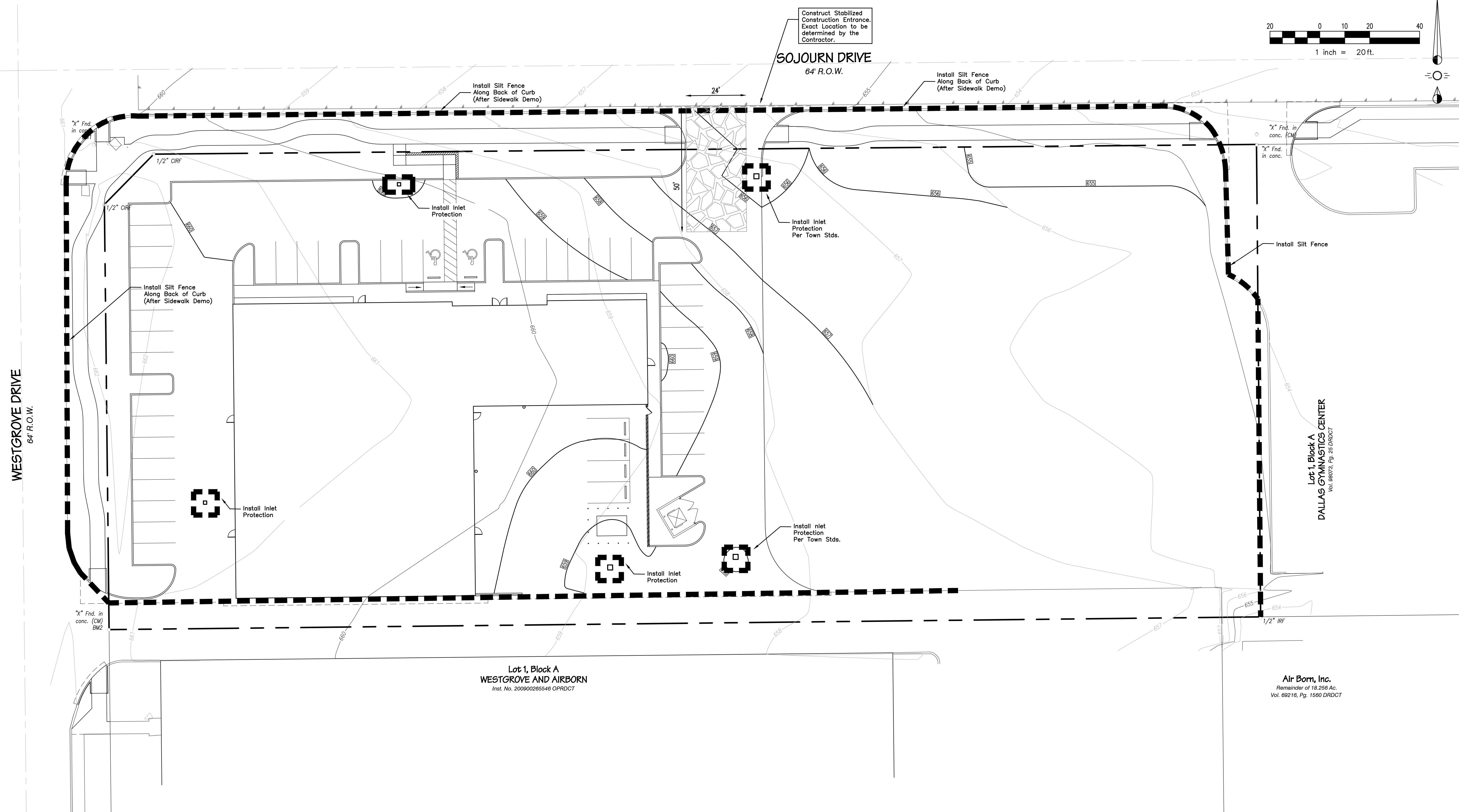
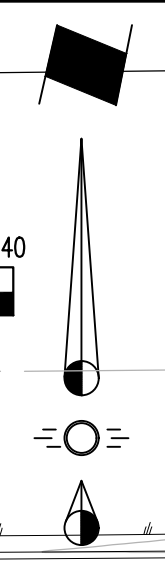
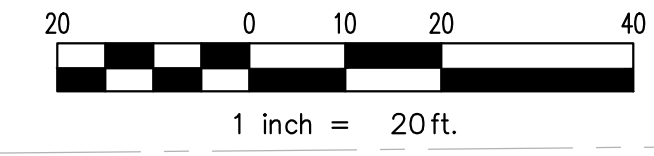


Revisions	Date

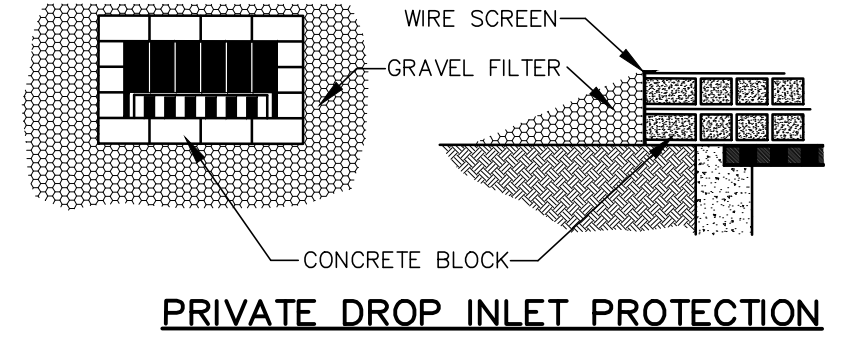


CAUTION !!!
EXISTING UTILITIES

EXISTING UTILITIES AND UNDERGROUND FACILITIES INDICATED ON THESE PLANS HAVE BEEN LOCATED FROM REFERENCE INFORMATION. IT SHALL BE THE RESPONSIBILITY OF THE CONTRACTOR TO VERIFY BOTH HORIZONTALLY AND VERTICALLY THE LOCATION OF ALL EXISTING UTILITIES AND UNDERGROUND FACILITIES PRIOR TO CONSTRUCTION, TO TAKE NECESSARY PRECAUTIONS IN ORDER TO PROTECT ALL FACILITIES ENCOUNTERED. THE CONTRACTOR SHALL PRESERVE AND PROTECT ALL EXISTING UTILITIES FROM DAMAGE DURING CONSTRUCTION.

CALL 1-800-344-8377 (DIG-TESS) OR OTHER UTILITY LOCATION SERVICES 48 HOURS PRIOR TO CONSTRUCTION ACTIVITY. SPIARS ENGINEERING, INC. IS NOT RESPONSIBLE FOR KNOWING ALL EXISTING UTILITIES OR DEPICTING EXACT LOCATIONS OF UTILITIES ON DRAWINGS.

Note:
'The Grate Bag' or Town-approved equal shall be installed as inlet protection post pavement installation.



RECORD DRAWINGS

NOTE:
THESE PLANS HAVE BEEN REVISED TO CONFORM WITH CONSTRUCTION RECORDS PROVIDED BY THE CONTRACTOR.

- BENCHMARKS:
- "X" cut found in concrete ramp at southeast corner of the intersection of Westgrove and Sojourn. Elev.=661.09'
 - "X" cut found for southwest property corner. Elev.=661.15'

Plotted by: ibarnett; Plot Date: 4/17/2016 8:05 AM

Drawing: C:\2016\2016\16036\16036.dwg; User: jws; Date: 9/16/2016 11:48:05 AM