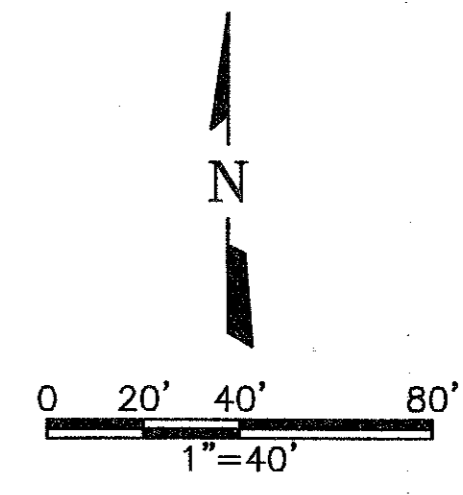
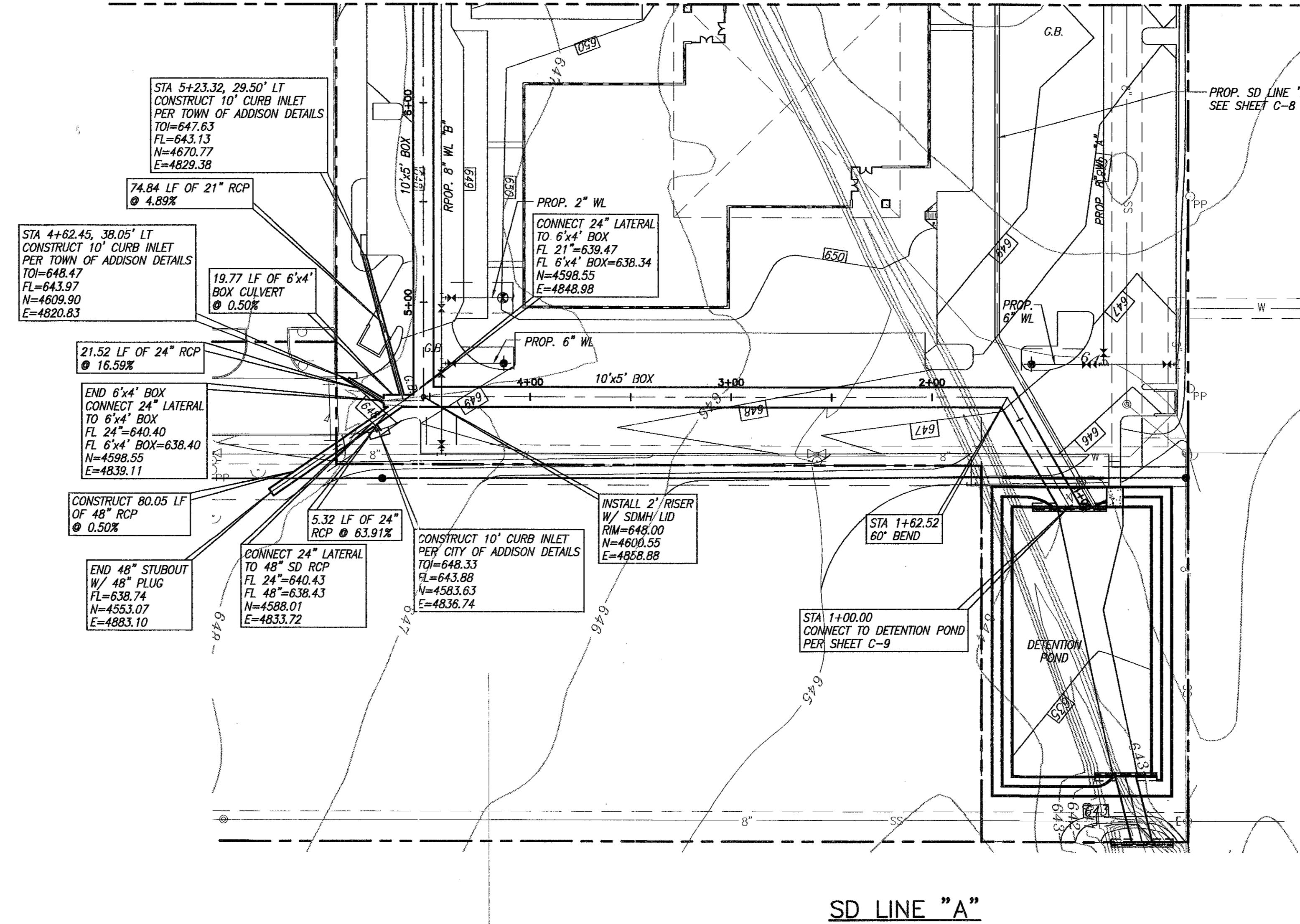


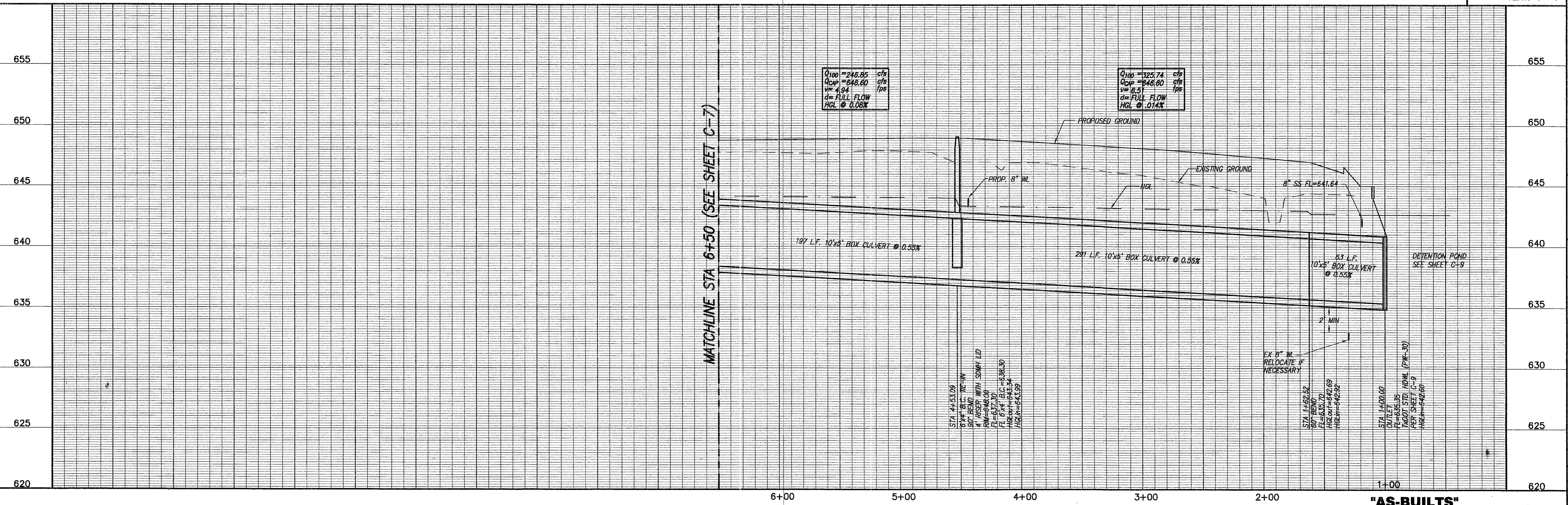
MATCHLINE STA 6+50 (SEE SHEET C-7)



BENCHMARK:
 SQUARE CUT ON INLET AT S.W. CORNER OF SOJOURN DR. AND ADDISON RD. ELEV. 641.95

- NOTES**
- BOX CULVERTS SHALL BE CONSTRUCTED PER TxDOT STANDARD SC-NA USING 3000 PSI CONCRETE.
 - STORM DRAIN PIPES SHALL BE CLASS III, C-76 RCP UNLESS OTHERWISE NOTED.
 - STORM DRAIN MANHOLE RISERS SHALL BE CONSTRUCTED USING C-47B PRECAST REINFORCED CONCRETE MANHOLE SECTIONS.
 - REFER TO UTILITY PLAN (SHEET C-10) FOR PROPOSED WATER & SEWER LAYOUT.
 - INLETS & CONCRETE COLLARS SHALL BE CONSTRUCTED PER TOWN OF ADDISON DETAILS.

SCALES: HOR. 1"=40'
 VERT. 1"=4'



OMNIPLAN ARCHITECTS
SOJOURN OFFICE CENTER
 ADDISON, TEXAS

SITWORK PLANS
STORM DRAIN P & P LINE "A"
 STA. 1+00 TO STA. 6+50

RECORD DRAWING
 BASED ON THE INFORMATION
 SUPPLIED BY THE CONTRACTOR
 DATE: 3-3-00 TO: THH

THE STATE OF TEXAS
 ENGINEER: TRICIA H. HATLEY
 TEXAS REGISTRATION NO. 83282
 DATE: OCT. 6, 1989

1341 W. McLoughlin Lane-Suite 230-E
 75247
 214-920-2500

FEIN OR NO. COMP99206
 FILE 206SDPPA-1
 DATE 6/3/99
 DESIGNED 7-26-99
 DRAWN MOW
 REVISIONS
 SHEET C-6
 SEQ. 9 OF 16

Bar is one inch on original drawing. If not one inch on this sheet, adjust scale.

VERIFY SCALE
 DESIGNED MOW
 DRAWN MOW
 REVISIONS
 CHECKED THH