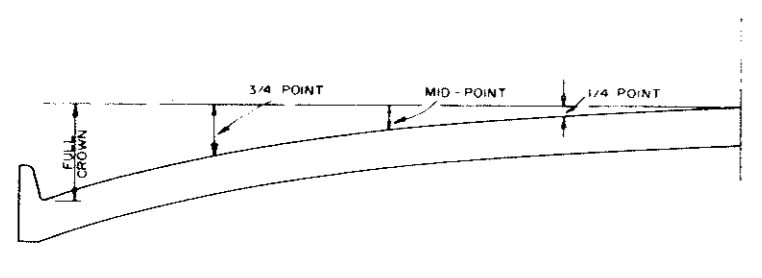


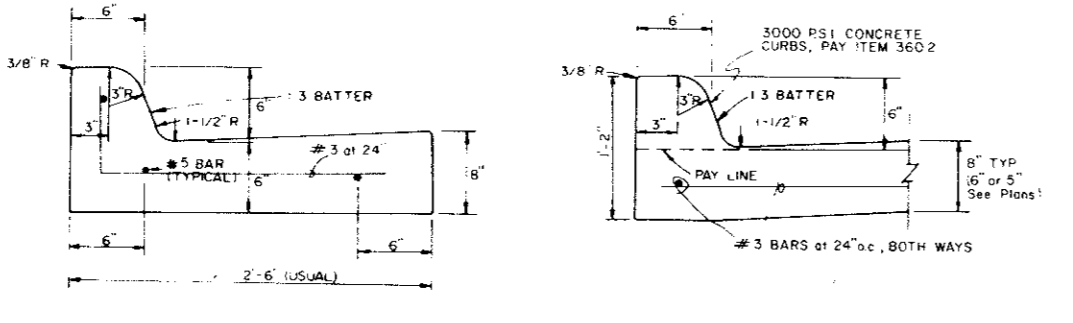
REINFORCED CONCRETE PAVEMENT

ALL REINFORCING BARS SHALL BE NO. 3 TRANSVERSE BARS TO BE SPACED ON 2'-0" CENTERS. LONGITUDINAL BARS TO BE SPACED ON 2'-0" EXCEPT WHERE NOTED.



ROADWAY WIDTH (ft)	TOTAL CROWN HEIGHT	3/4" POINT	1/4" POINT	1/4" POINT
26	6"	3'-3 3/8"	1'-10 1/2"	3'-8"
30	6"	3'-3 3/8"	1'-10 1/2"	3'-8"
44	6"	3'-3 3/8"	1'-10 1/2"	3'-8"
48	6"	3'-3 3/8"	1'-10 1/2"	3'-8"

TABLE OF CROWN HEIGHTS AND ORDINATES FOR VARIOUS PARABOLIC SECTIONS



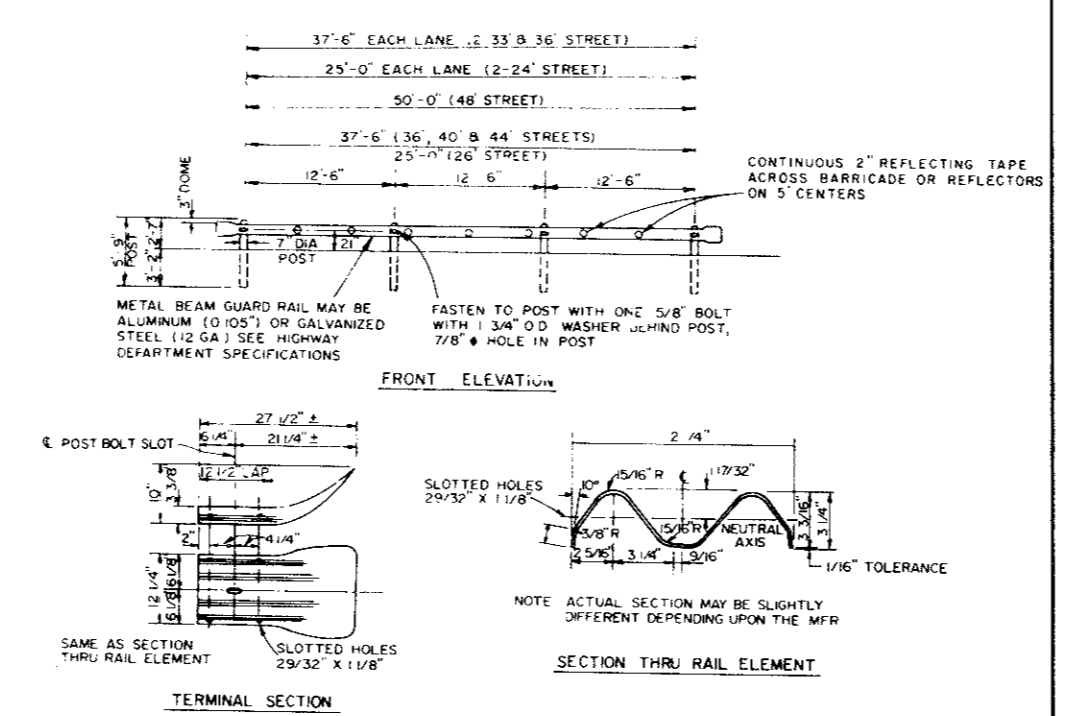
SEPARATE CURB-AND-GUTTER
INTEGRAL CURB
CURB AND CURB-AND-GUTTER

GENERAL NOTES

- GENERAL: USUAL PAVEMENT THICKNESS IS AS SHOWN IN SPECIAL NOTES. SUBGRADE DESIGN SHALL CONFORM TO THE TOWN OF ADDISON, TEXAS DEPARTMENT OF ENGINEERING REQUIREMENTS, AND SHALL EXTEND 12" BEYOND CURB, SEE 10.
- REINFORCED CONCRETE PAVEMENT: CONCRETE STRENGTH SHALL BE AS SHOWN IN SPECIAL NOTES.
- ALL CURBS SHALL BE INTEGRAL WITH PAVEMENT.
- DETAIL AND ARRANGEMENT OF PAVEMENT JOINTS, ALL TYPES, SHALL BE AS SHOWN ON SHEET SD-3.
- BAR LAPS SHALL BE THIRTY DIAMETERS.
- SUBGRADE: SUBGRADE UNDER ALL PAVEMENT SHALL BE 6" THICK AND SHALL BE STABILIZED WITH 6% PERCENT BY WEIGHT OF MOISTURE (LINE 10) (LUBEX) AND COMPACTED TO A DENSITY NOT LESS THAN 95% PERCENT AS DETERMINED BY AASHTO T-99 (LABORATORY TESTS MAY BE SUBMITTED TO THE ENGINEERING DEPARTMENT FOR APPROVAL TO LOWER AMOUNT OF LIME REQUIRED).
- BAR CHAINS ON AN APPROVED DEVICE SHALL BE FURNISHED.

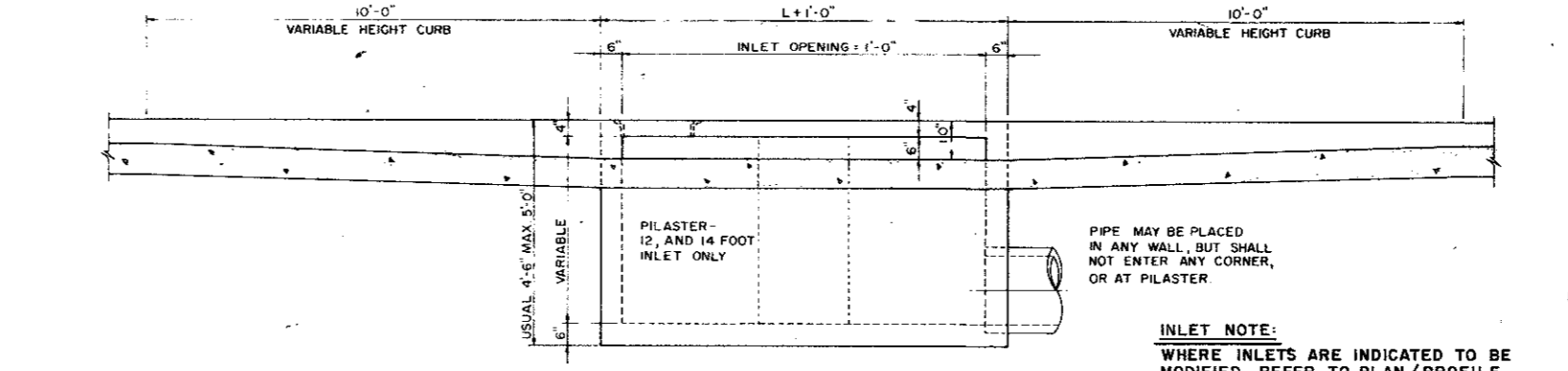
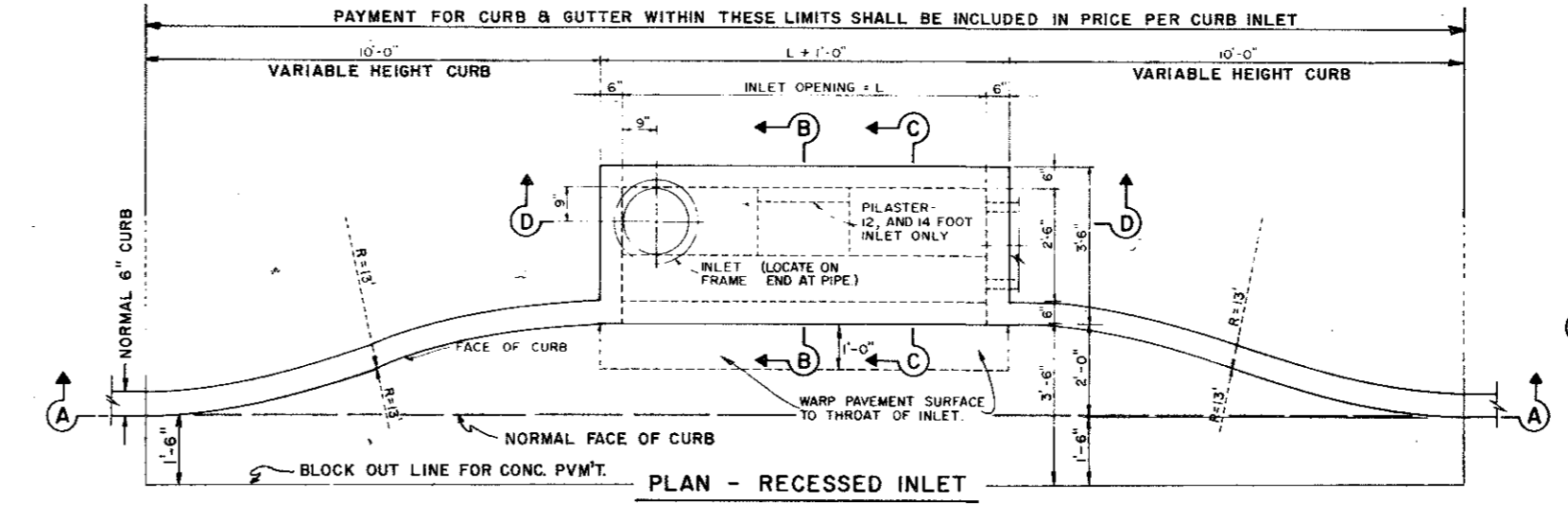
SPECIAL NOTES

PAVEMENT THICKNESS AND STRENGTHS SHALL BE AS FOLLOWS:
TYPE (RESIDENTIAL THROUGH INDUSTRIAL)
B (3000 P.S.I.)
TYPE (RESIDENTIAL)
E (3000 P.S.I.) COMP OR 5" 3600 P.S.I. COMP

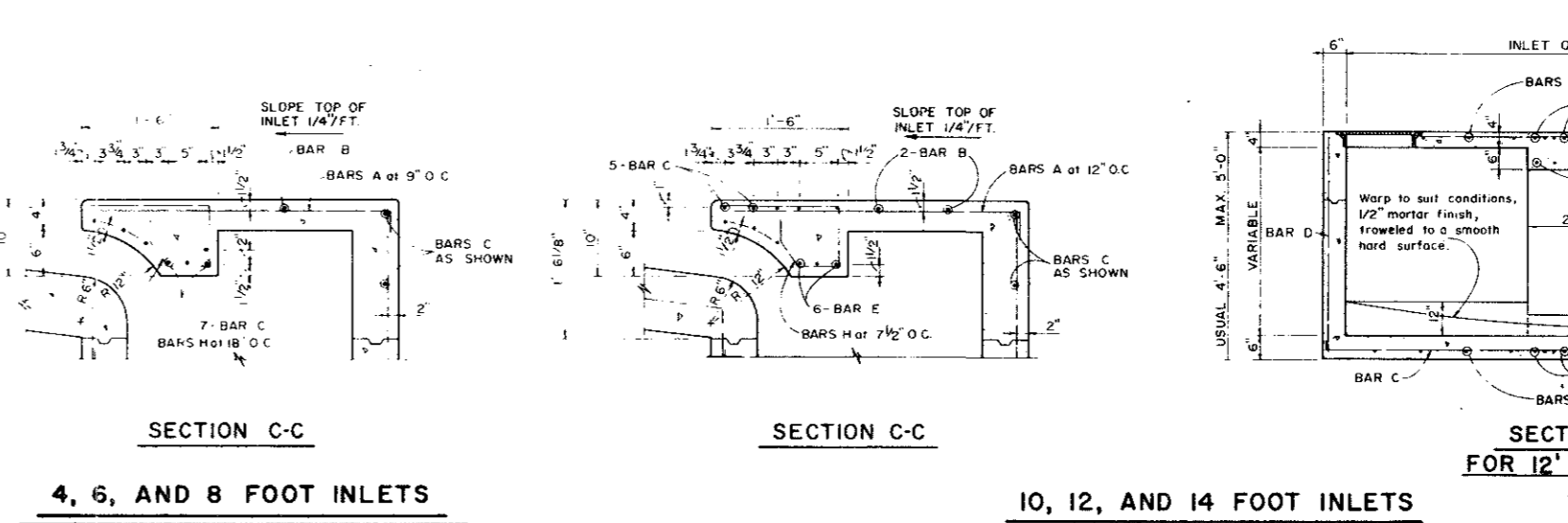
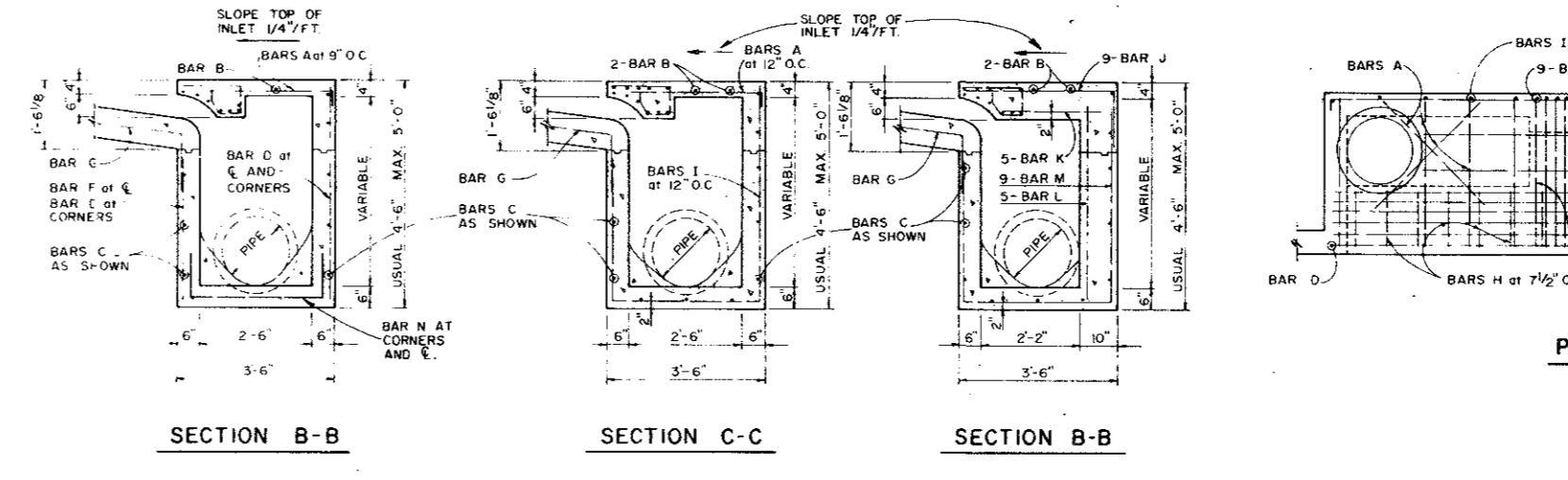


BARRICADE DETAIL

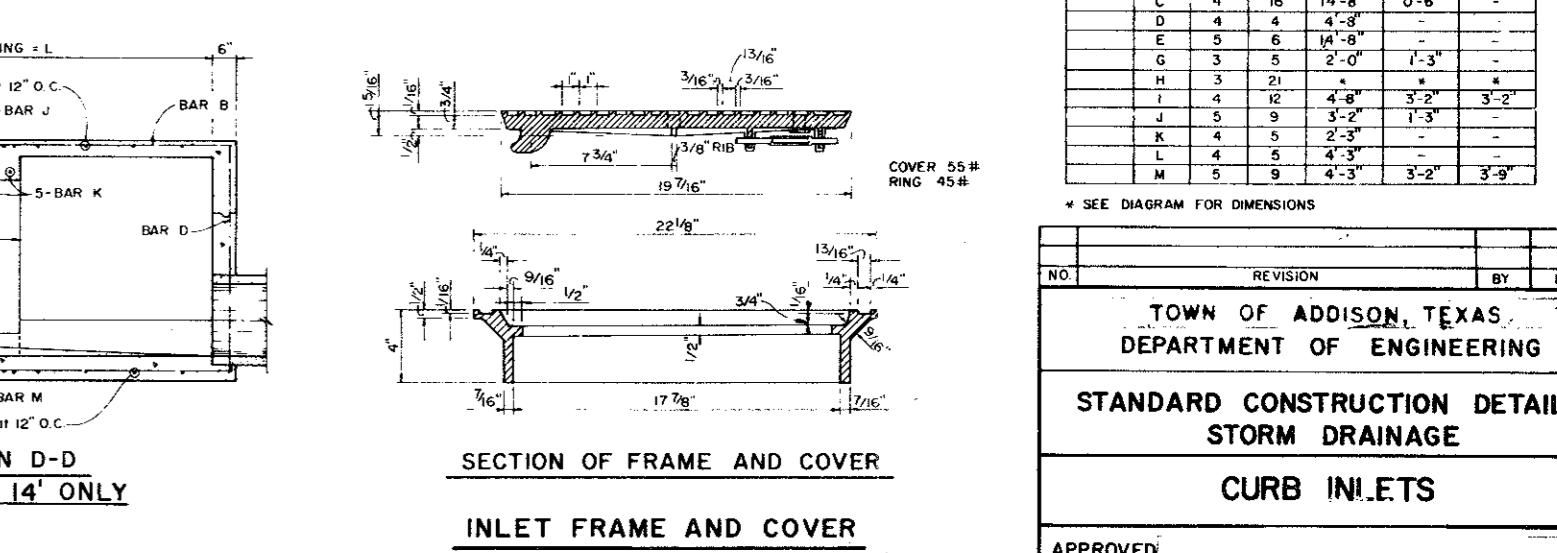
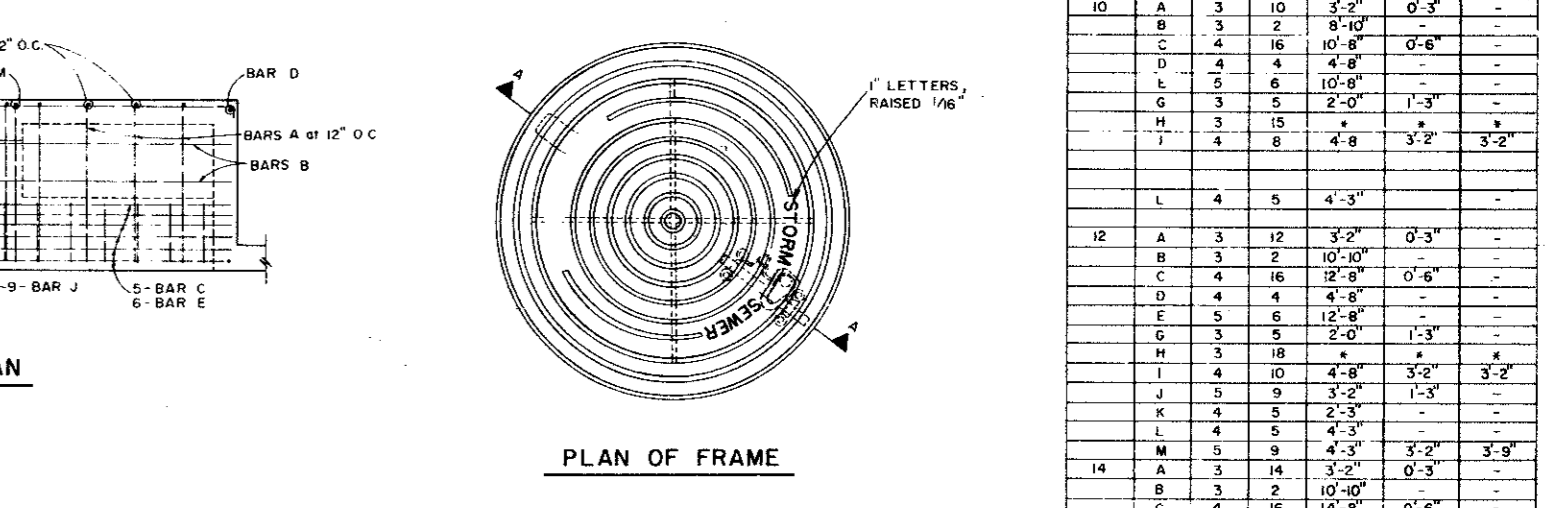
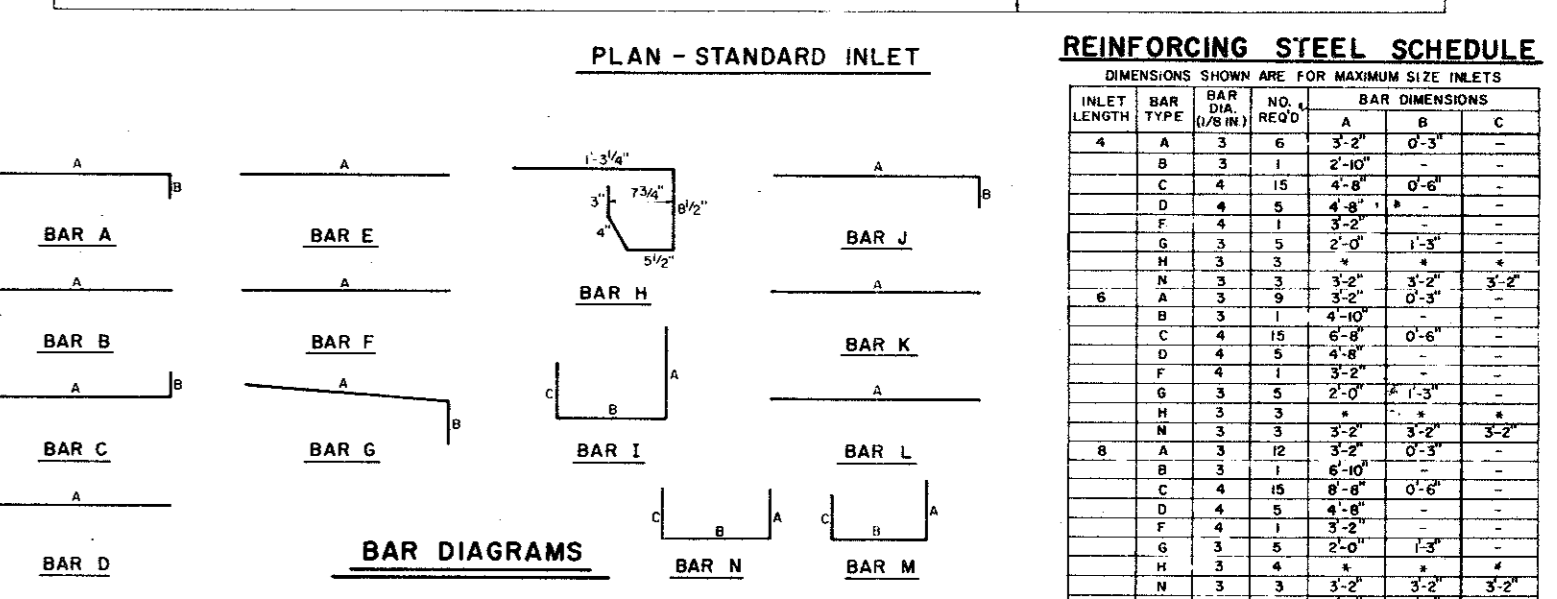
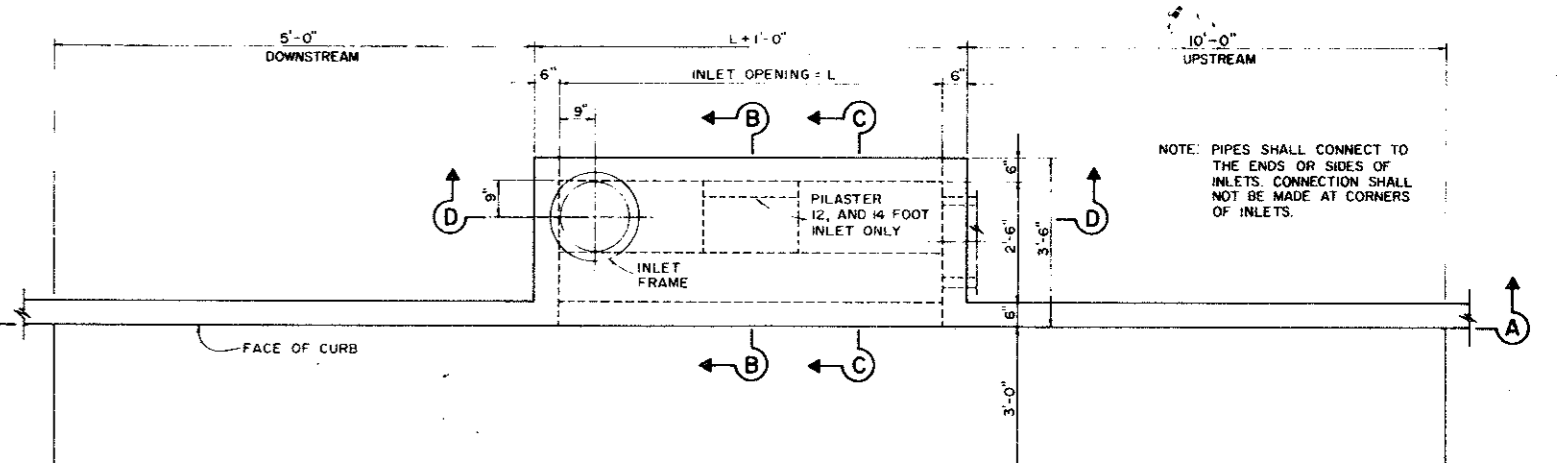
NO.	REVISION	BY	DATE
TOWN OF ADDISON, TEXAS DEPARTMENT OF ENGINEERING			
STANDARD CONSTRUCTION DETAILS PAVING			
PARABOLIC CROWN STREETS			
APPROVED	H. WATKINS, P.E.		
DATE: MARCH 1984	SHEET SD-2		



SECTION A-A-RECESSED AND STANDARD INLETS
4, 6, 8, 10, 12, AND 14 FOOT INLETS



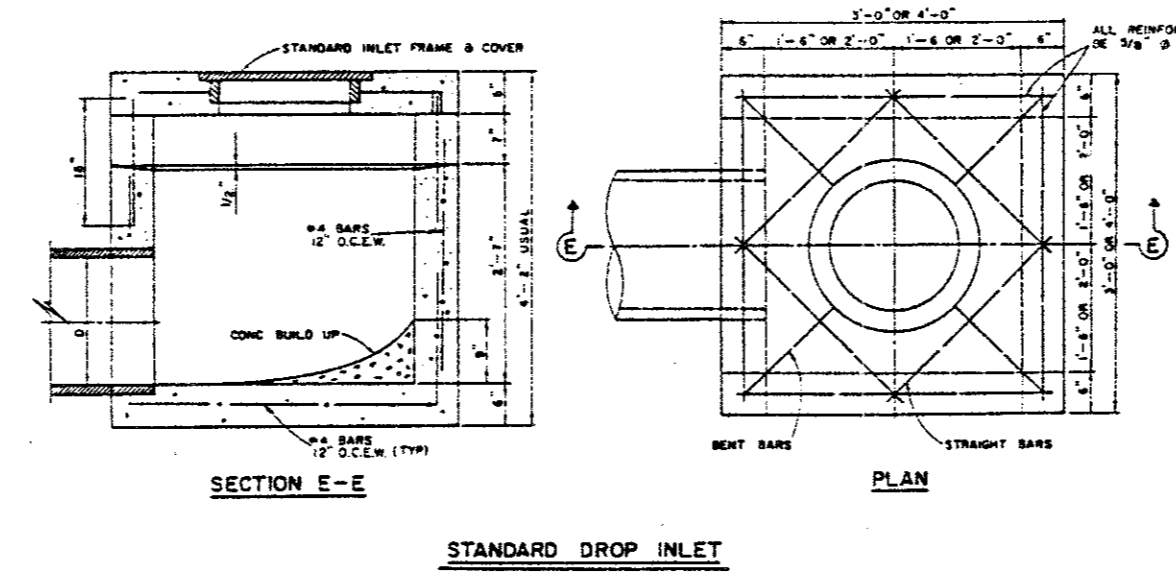
SECTION C-C
SECTION C-C
SECTION D-D FOR 12' & 14' ONLY
4, 6, AND 8 FOOT INLETS
10, 12, AND 14 FOOT INLETS



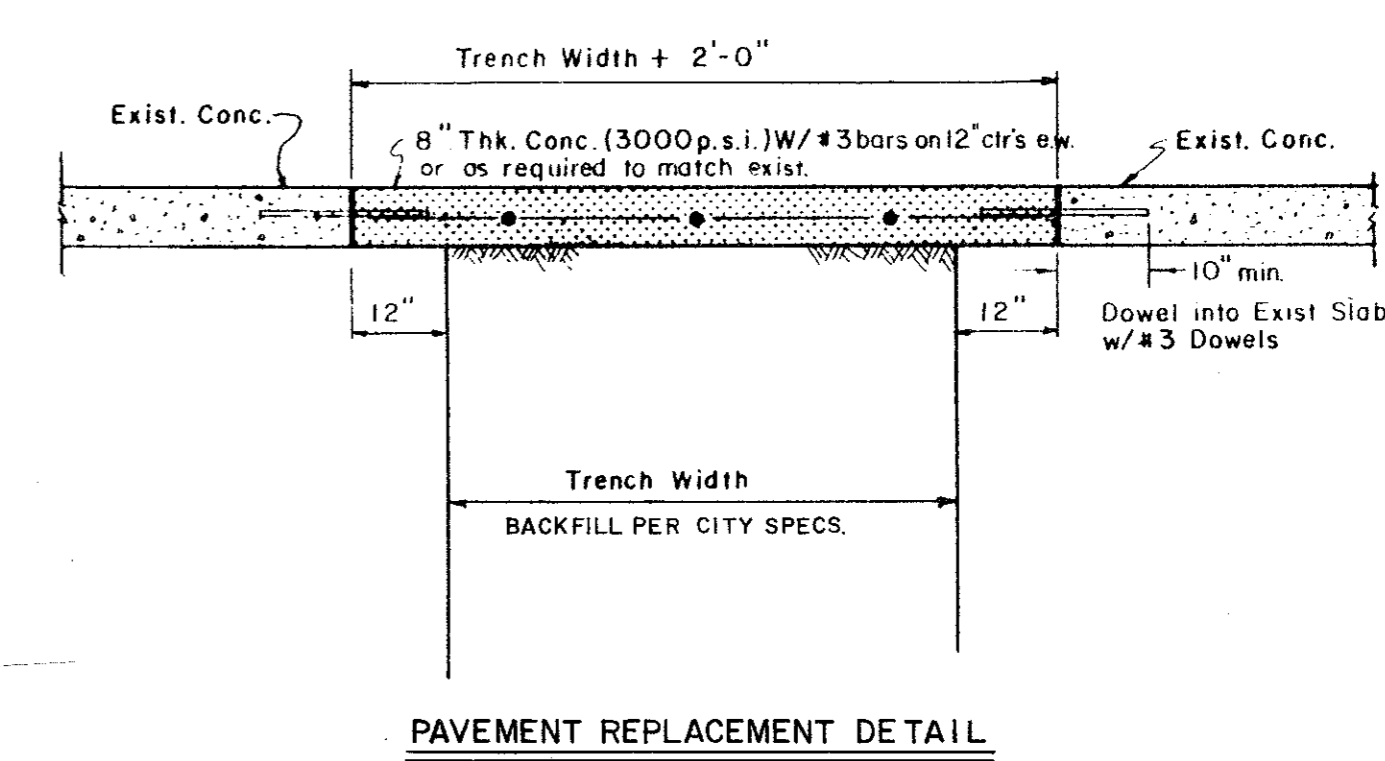
SECTION OF FRAME AND COVER
INLET FRAME AND COVER

REINFORCING STEEL SCHEDULE

INLET LENGTH (TYPE)	BAR NO.	BAR DIMENSIONS	INLETS
4	A	3/8" x 12'	4, 6, 8, 10, 12, 14
4	B	3/8" x 12'	4, 6, 8, 10, 12, 14
4	C	3/8" x 12'	4, 6, 8, 10, 12, 14
4	D	3/8" x 12'	4, 6, 8, 10, 12, 14
4	E	3/8" x 12'	4, 6, 8, 10, 12, 14
4	F	3/8" x 12'	4, 6, 8, 10, 12, 14
4	G	3/8" x 12'	4, 6, 8, 10, 12, 14
4	H	3/8" x 12'	4, 6, 8, 10, 12, 14
4	I	3/8" x 12'	4, 6, 8, 10, 12, 14
4	J	3/8" x 12'	4, 6, 8, 10, 12, 14
4	K	3/8" x 12'	4, 6, 8, 10, 12, 14
4	L	3/8" x 12'	4, 6, 8, 10, 12, 14
4	M	3/8" x 12'	4, 6, 8, 10, 12, 14
4	N	3/8" x 12'	4, 6, 8, 10, 12, 14
4	O	3/8" x 12'	4, 6, 8, 10, 12, 14
4	P	3/8" x 12'	4, 6, 8, 10, 12, 14
4	Q	3/8" x 12'	4, 6, 8, 10, 12, 14
4	R	3/8" x 12'	4, 6, 8, 10, 12, 14
4	S	3/8" x 12'	4, 6, 8, 10, 12, 14
4	T	3/8" x 12'	4, 6, 8, 10, 12, 14
4	U	3/8" x 12'	4, 6, 8, 10, 12, 14
4	V	3/8" x 12'	4, 6, 8, 10, 12, 14
4	W	3/8" x 12'	4, 6, 8, 10, 12, 14
4	X	3/8" x 12'	4, 6, 8, 10, 12, 14
4	Y	3/8" x 12'	4, 6, 8, 10, 12, 14
4	Z	3/8" x 12'	4, 6, 8, 10, 12, 14



SECTION E-E
STANDARD DROP INLET



PAVEMENT REPLACEMENT DETAIL

TOWN OF ADDISON, TEXAS
CONSTRUCTION DETAILS
PAVING & CURB INLETS

DESIGN	DRAWN	DATE	SCALE	NOTES	FILE	NO.
						4/4