

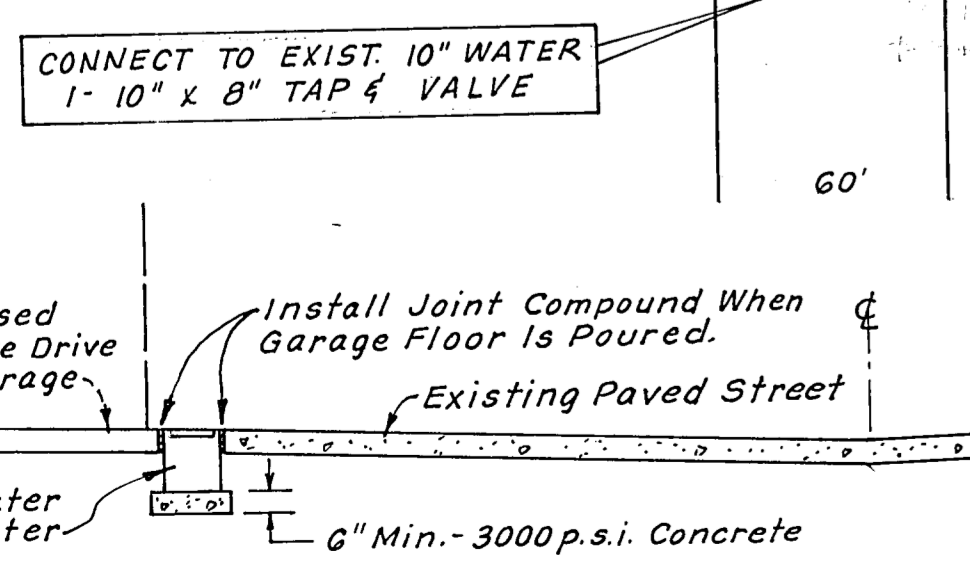
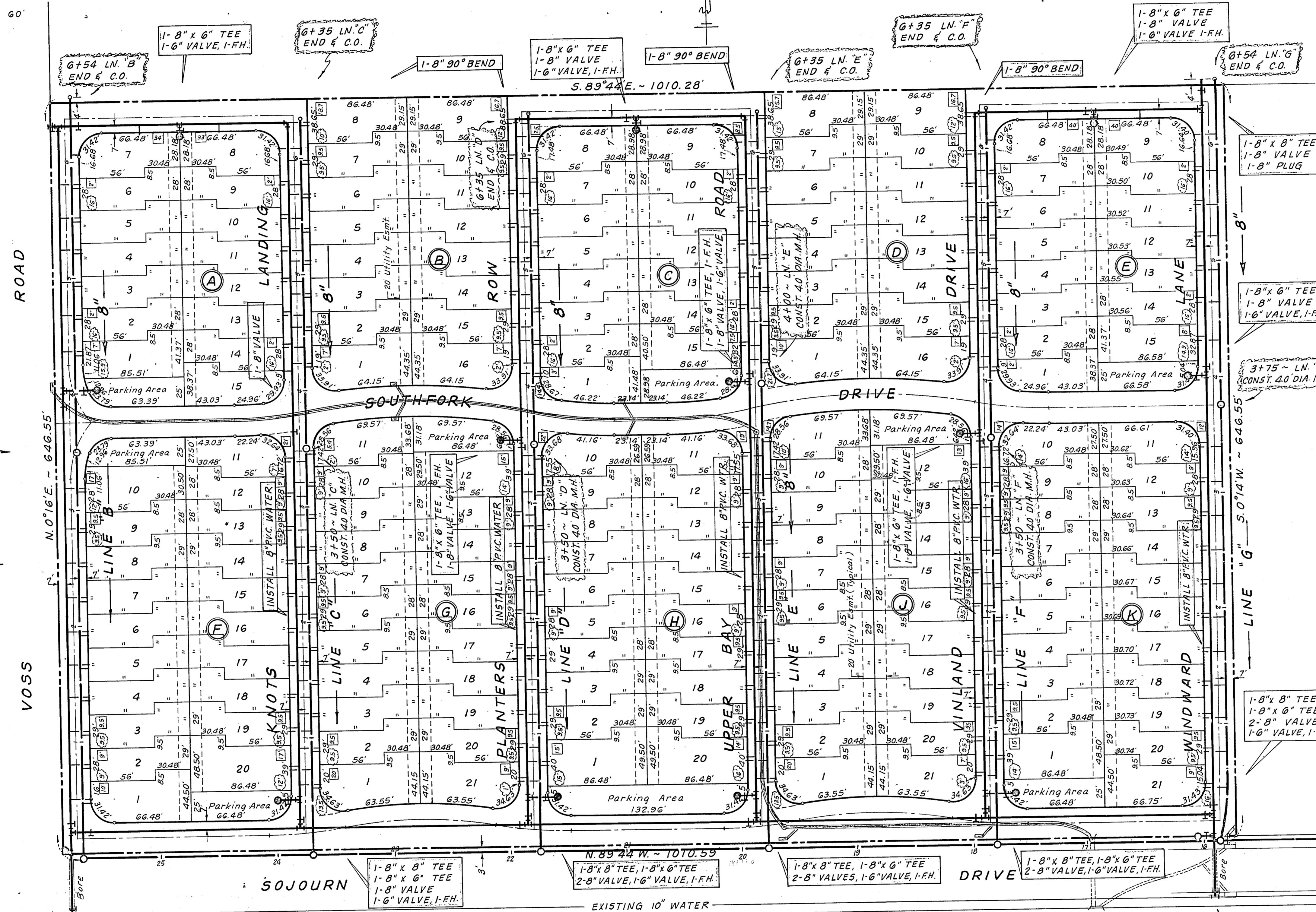
GENERAL NOTES

- All materials, appurtenances and workmanship to conform to the City of Addison Standard Specifications for Water and Sewer Improvements.
- Water mains shall be PVC Pressure Pipe. The pipe shall meet or exceed requirements of AWWA C-900-73. The pipe shall be installed with outside dimensions and with rubber gaskets. PVC water pipe shall be listed by Underwriters Laboratories and approved for use in cities and towns of Texas by the State Board of Insurance. The pipe shall bear the seal of approval (or "NSF" mark) of the National Sanitation Foundation Testing Laboratory for potable water pipe. Provisions must be made for expansion and contraction at each joint with a rubber gasket and an integral chlorinated bell as part of each joint. The pipe and fittings must be made from NSF approved resin (2454-1) and PVC Pipe Compound conforming to ASTM resin specification D1784. Fittings shall be mechanical joint or rubber gasket joint cast iron fittings.
- Water mains shall have a minimum cover of 42" below finished street grades or as required to clear other utilities.
- All lots to have 1" copper water service and 4" sanitary sewer laterals as shown.
- Fire hydrants to be smaller size than usual.
- All trenches under roadway pavement shall be backfilled and compacted to the standard Proctor density by mechanical method by Contractor.
- Contractor shall be responsible for providing "As-Built" plan to the Engineer showing the location of water and sewer services by distance to each respective lot corner.
- Bedding material for water and sewer pipe shall be sand and shall be placed 6" below the pipe, around the pipe and 5" above the pipe.
- No. 12 coated copper wire or metallic green tape bedding shall be placed in the trench over all water lines.
- Each water service to include a water meter box with floor level indicated at the location indicated and to be completed with 3/4" x 3/4" meter walk and 3/4" x 3" brass nipple and curb stop. Water meters to be Badger or Horsley/Smith.
- All existing underground facilities such as existing water lines, sanitary sewer lines, gas lines, storm sewers, telephone conduits, electrical conduits, etc., are shown on this plan. If these proposed underground facilities conflict with these existing underground facilities, the Contractor shall be responsible for the location of these existing underground facilities.
- All water and sanitary sewer lines shall be separated by a minimum vertical distance of 18" at all crossings and separated by a minimum distance of 10' horizontally.
- The Utility Contractor and Sewer Contractor shall locate, locate, connect and perform any other function necessary to place sewerage service and allow as they are prior to the installation of the aforementioned utilities. Excessive dirt from excavated trenches shall be placed on adjacent lots as directed by the Engineer.
- All sanitary sewer lines are to be 4" sewer pipe. All pipe and fittings shall meet the same strength requirements of ASTM specification for 4" pipe. The pipe shall have internal wall bell and gasket joints.
- Flanges for the PVC pipe and fittings shall be covered with rubber gasket joints. The gasket shall consist of an internal wall section with flange installed in the gasket locked in both grooves to ensure positive seal when all installation conditions.
- Fittings and accessories shall be manufactured in accordance with the pipe supplier and have had a similar configuration identical to that of the pipe.
- Adaptor cement sleeves with rubber ring shall be used at all manholes to provide positive water tight connections. All manholes shall be sealed in place.

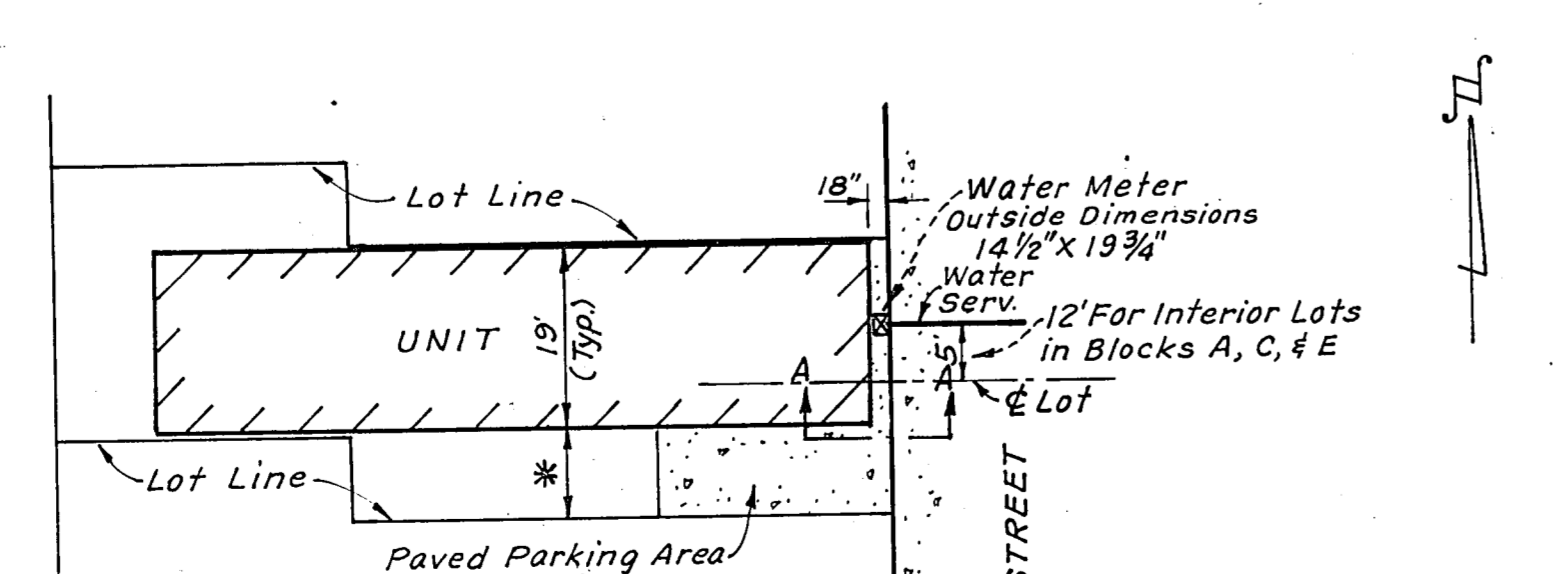
CITY OF ADDISON APPROVED
SEE SHEETS 13, 14 FOR SECTION OFFSITE SANITARY SEWER EAST.
BUILDING DEPARTMENT

DATE: _____ CONTRACTOR IS HEREBY INSTRUCTED TO EXERCISE CARE IN MEETING OR EXCEEDING ALL REQUIREMENTS OF BOTH LOCAL AND STATE AND LOCAL CODES APPLICABLE TO THIS WORK. NOTATIONS FOR WATER SERVICES, & SEWER LATERALS SHOWN HEREON WERE FURNISHED BY THE CONTRACTOR AND WERE NOT MEASURED OR VERIFIED BY US.

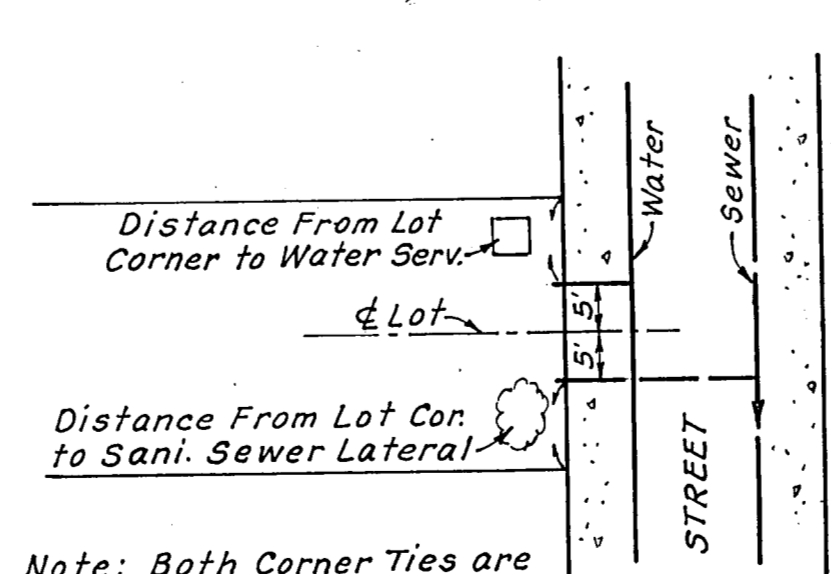
LAST Revision 12/9/81



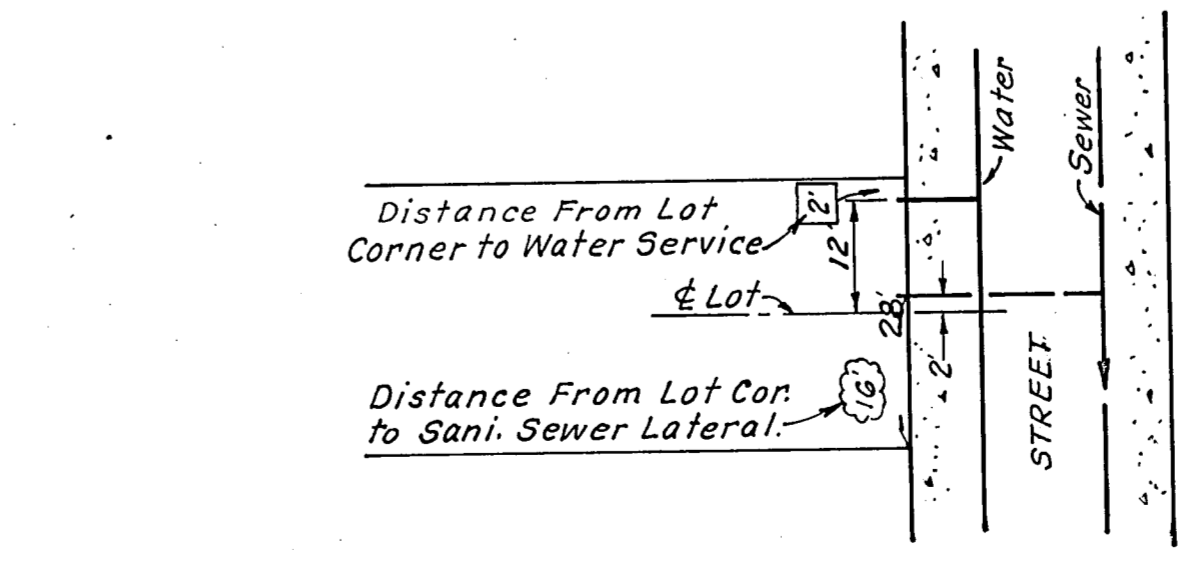
SECTION A-A
WATER METER INSTALLATION
BY PLUMBER



WATER SERVICE & METER
LOCATION FOR INTERIOR LOTS



WATER SERVICE & SEWER LATERAL
LOCATIONS FOR INTERIOR LOTS
IN BLOCKS B, D, F, G, H, J, & K



WATER SERVICE & SEWER LATERAL
LOCATIONS FOR INTERIOR LOTS
IN BLOCKS A, C, & E

WATER & SEWER MAP					
BENT TREE SOUTH ADDITION					
ADDISON, TEXAS					
C. L. MOON, INC.					
Consulting Engineers					
11325 PEGASUS ST.					
DALLAS, TEXAS 75239					
DESIGN	DRAWN	DATE	REV.	SCALE	NOTES
	R.M.	DEC. 1981		1" = 50'	11