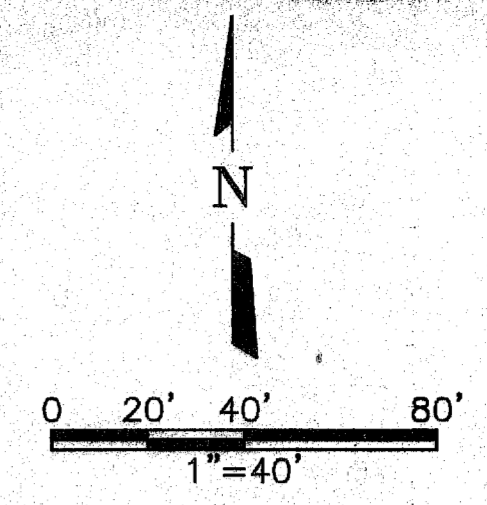
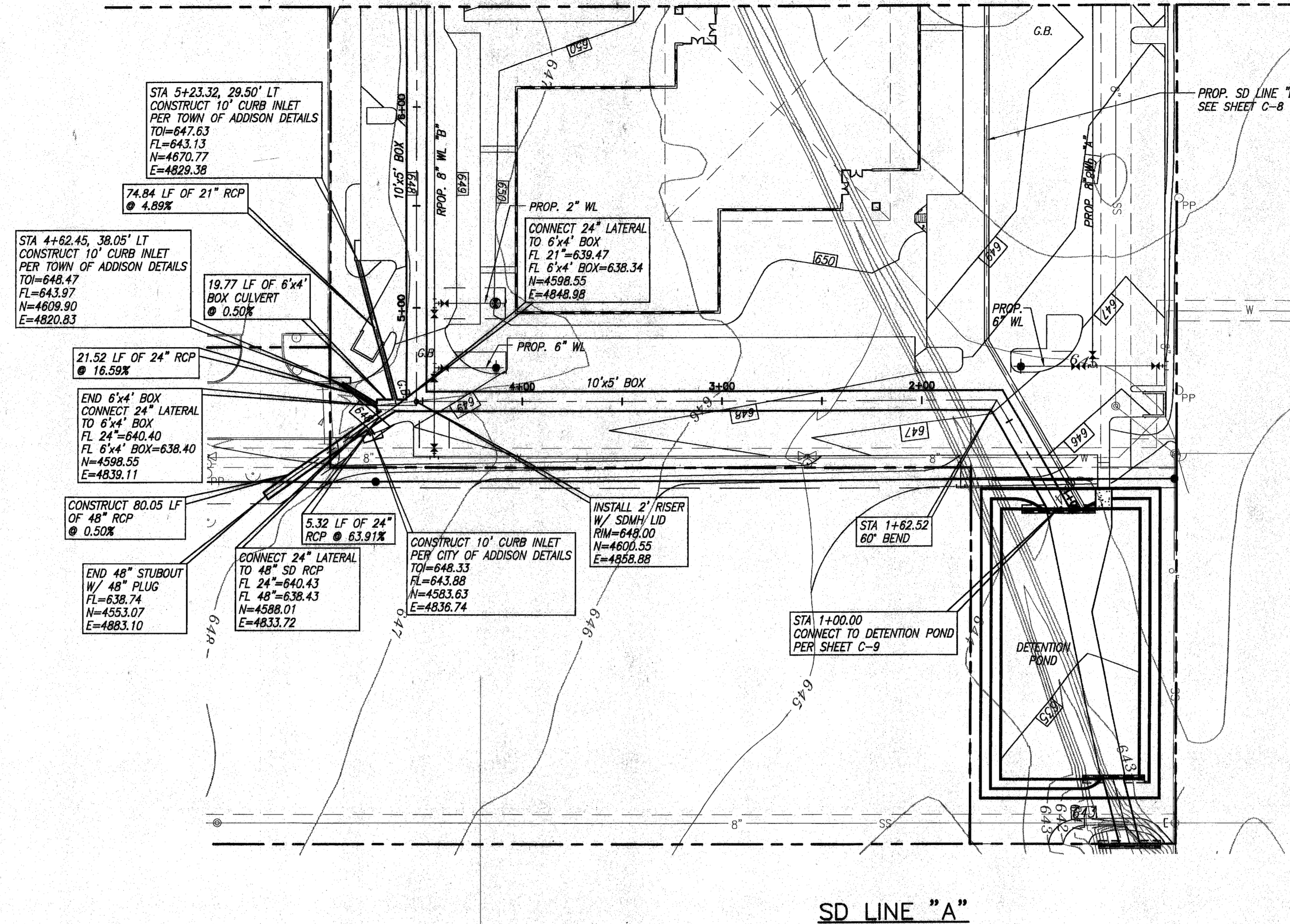


MATCHLINE STA 6+50 (SEE SHEET C-7)



RECORD DRAWING
 SUPPLIED BY THE CONTRACTOR
 DATE: 7-1-00 TO: THH

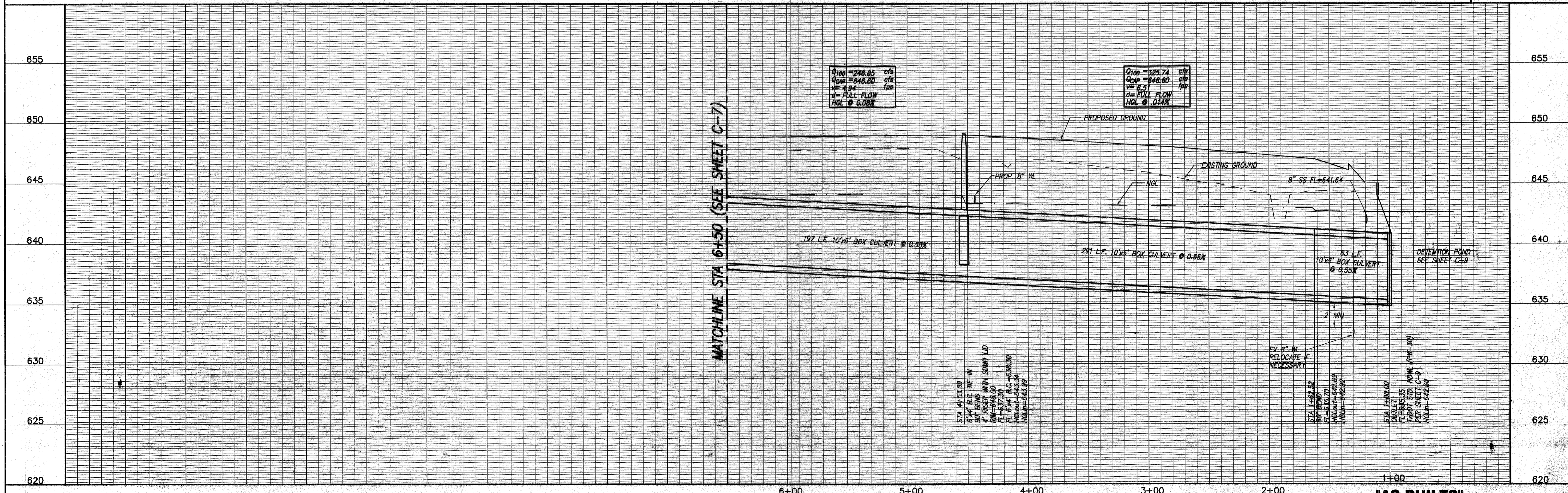
THE SEAL APPEARING ON THIS DOCUMENT AND ANY OTHERS THEREON ARE VALID BY ENGINEER: TRACY W. HARRIS TEXAS REGISTRATION NO. 53292 DATE: OCT. 6, 1999

BENCHMARK:
 SQUARE CUT ON INLET AT S.W. CORNER OF SOJOURN DR. AND ADDISON RD. ELEV. 641.95

- NOTES**
- BOX CULVERTS SHALL BE CONSTRUCTED PER TxDOT STANDARD SC-NA USING 3000 PSI CONCRETE.
 - STORM DRAIN PIPES SHALL BE CLASS III, C-76 RCP UNLESS OTHERWISE NOTED.
 - STORM DRAIN MANHOLE RISERS SHALL BE CONSTRUCTED USING C-478 PRECAST REINFORCED CONCRETE MANHOLE SECTIONS.
 - REFER TO UTILITY PLAN (SHEET C-10) FOR PROPOSED WATER & SEWER LAYOUT.
 - INLETS & CONCRETE COLLARS SHALL BE CONSTRUCTED PER TOWN OF ADDISON DETAILS.

SD LINE "A"

SCALES: HOR. 1"=40'
 VERT. 1"=4'



"AS-BUILTS"

OMNIPLAN ARCHITECTS
 SOJOURN OFFICE CENTER
 ADDISON, TEXAS

SITEWORK PLANS
 STORM DRAIN P & P LINE "A"
 STA 1+00 TO STA 6+50

NO. REVISION	DATE	BY	DESIGNED	DRAWN	REVISION	CHECKED
1	4/30/99	MW	MW	THH		
2	8/3/99	MW				

PER CONTRACTOR RT "1" AND "2"
 REVISION PER RISING FT 1 FOOT

VERIFY SCALE: Bar is one inch on original drawing. If not one inch on this sheet, adjust scale.

SHEET C-6
 SEQ. 9 OF 16