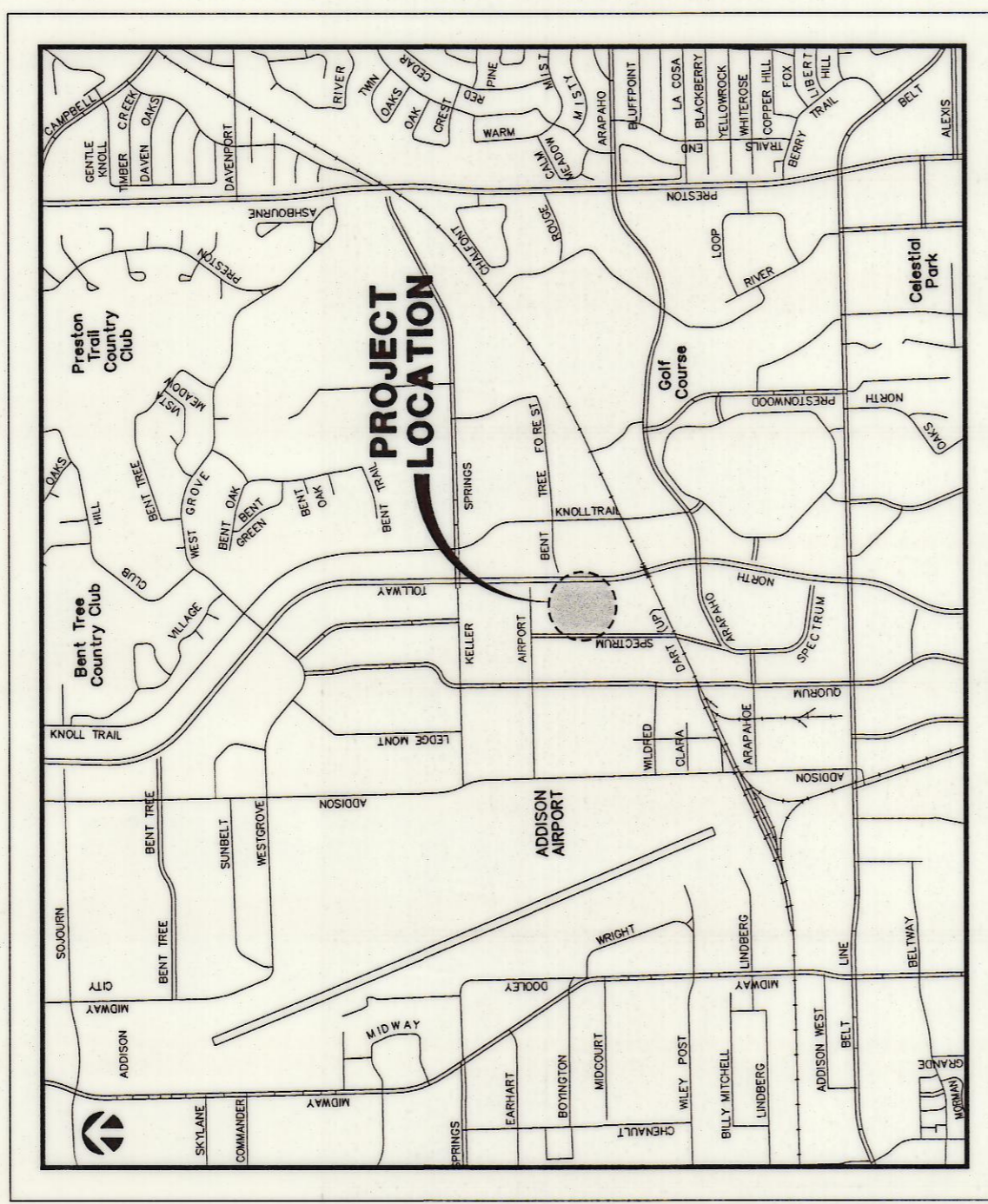




scale
0 40 80
feet
1"=40'



Site Map
NOT TO SCALE

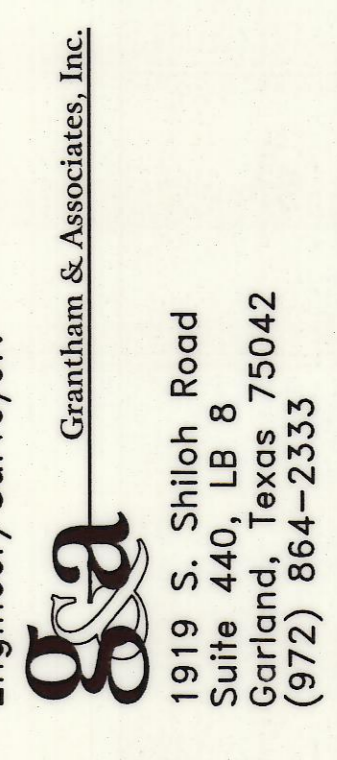
NOTES

1. THE BEARINGS SHOWN ON THIS PLAT ARE BASED ON THE SAME MERIDIAN AS THE BEARINGS SHOWN IN RECORDS VOL. 99002, PG. 16 AND VOL. 85021, PG. 1686. THE BEARINGS OF THE WESTERLY RIGHT OF WAY LINE OF SPECTRUM DRIVE TO THE EASTERLY RIGHT OF WAY LINE OF SPECTRUM DRIVE.

FINAL PLAT
SNK MIXED USE DEVELOPMENT
6.536 ACRES

BEING A TRACT OF LAND OUT OF THE G.W. FISHER SURVEY, ABSTRACT NO. 482, IN THE TOWN OF ADDISON, DALLAS COUNTY, TEXAS.

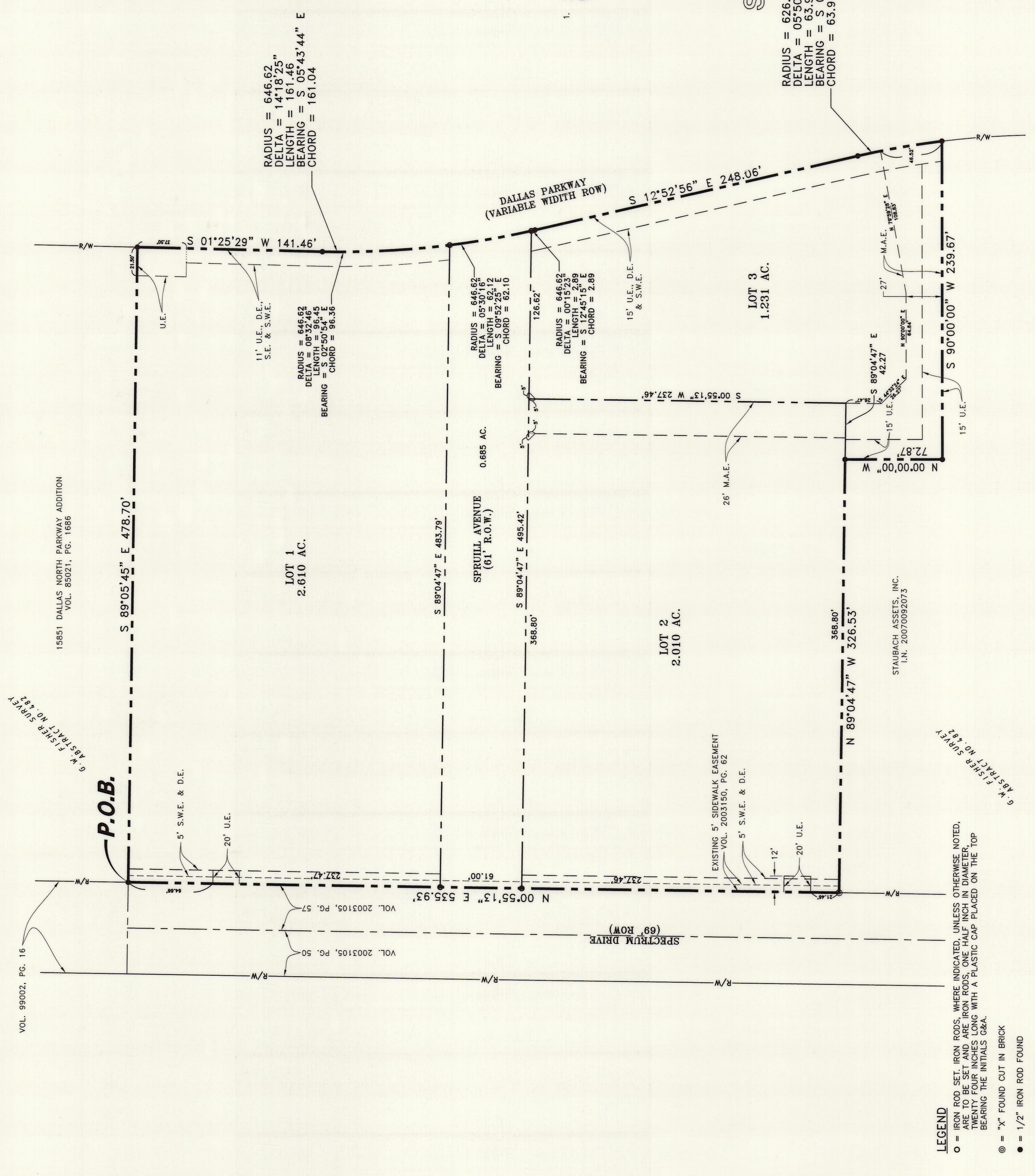
Engineer/Surveyor:



Developer:
SNK DEVELOPMENT INC.
2522 MCKINNEY AVENUE
SUITE 201
DALLAS, TX. 75201
(214) 550-8005

MAY 24, 2007

SHEET 1 OF 2 CASE NO. 1521-Z



LEGEND

- = IRON ROD SET. IRON RODS, WHERE INDICATED, UNLESS OTHERWISE NOTED, ARE TO BE SET AND ARE IRON RODS, ONE HALF INCH IN DIAMETER, BEARING THE INITIALS G&A.
- ⊙ = "X" FOUND CUT IN BRICK
- = 1/2" IRON ROD FOUND
- = UTILITY EASEMENT
- - - = DRAINAGE EASEMENT
- · - · = STREET EASEMENT
- · - · - · = SIDEWALK EASEMENT
- · - · - · - · = MUTUAL ACCESS EASEMENT
- · - · - · - · - · = LOT LINE
- · - · - · - · - · - · = EASEMENT LINE (PROPOSED)
- · - · - · - · - · - · - · = EASEMENT LINE (EXISTING)
- · - · - · - · - · - · - · - · = PROPERTY BOUNDARY

15851 DALLAS NORTH PARKWAY ADDITION
VOL. 85021, PG. 1686

G.W. FISHER SURVEY
ABSTRACT NO. 482

EXISTING 5' SIDEWALK EASEMENT
VOL. 2003150, PG. 62

STAUBACH ASSETS, INC.
I.N. 20070092073

G.W. FISHER SURVEY
ABSTRACT NO. 482