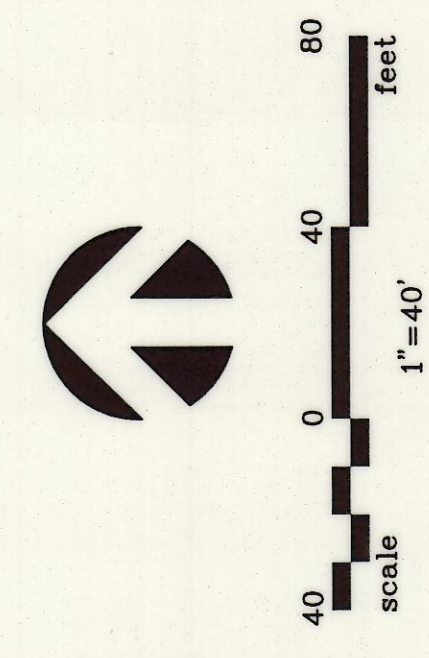


NO.	DATE	REVISION	APPROV.
1	3/12/08	REVISED CALL OUTS	B.R.G
2	1/29/09	REVISED SPECTRUM DRIVE PARKING	B.R.G
3			

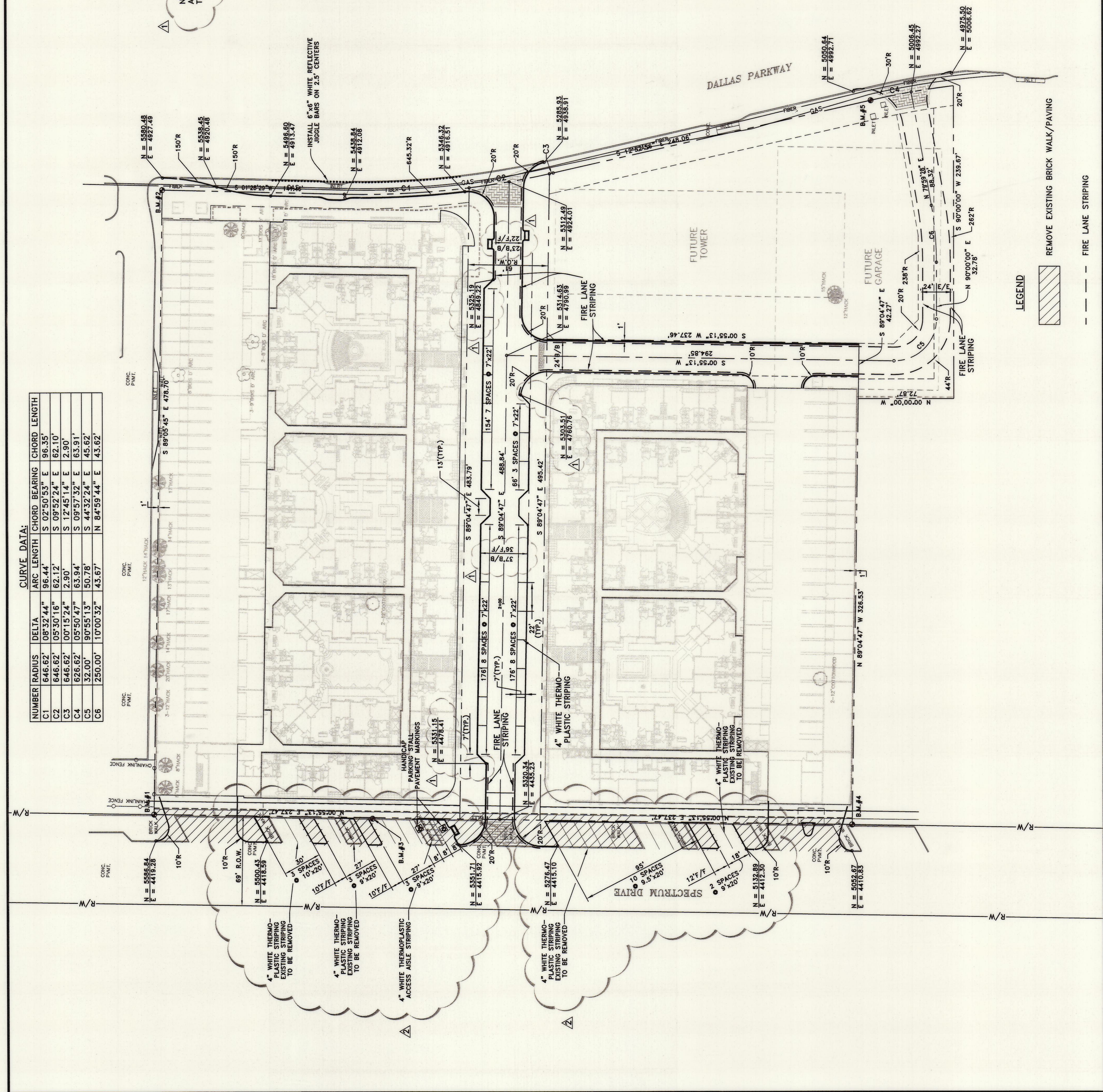
NO.	DATE	REVISION	APPROV.
1	3/12/08	REVISED CALL OUTS	B.R.G
2	1/29/09	REVISED SPECTRUM DRIVE PARKING	B.R.G
3			



CURVE DATA:

NUMBER	RADIUS	DELTA	ARC LENGTH	CHORD BEARING	CHORD LENGTH
C1	646.62'	08°32'44"	96.44'	S 02°50'53" E	96.35'
C2	646.62'	05°30'16"	62.12'	S 09°52'24" E	62.10'
C3	646.62'	00°15'24"	2.90'	S 12°45'14" E	2.90'
C4	626.62'	05°50'47"	63.94'	S 09°57'52" E	63.91'
C5	32.00'	90°55'13"	50.78'	S 44°32'24" E	45.62'
C6	250.00'	10°00'32"	43.67'	N 84°59'44" E	43.62'

NOTE: NOTHING AND EASTINGS ARE AT THE BACK OF CURB



BENCH MARK DATA

B.M. #1
 N = 5588.17
 E = 5052.41
 ELEVATION = 414.36
 FOUND ON IRON ROD FOUND ONE HALF EIGHTHS INCH IN DIAMETER

B.M. #2
 N = 5580.73
 E = 4818.21
 ELEVATION = 488.00
 FOUND ON IRON ROD FOUND ONE HALF EIGHTHS INCH IN DIAMETER

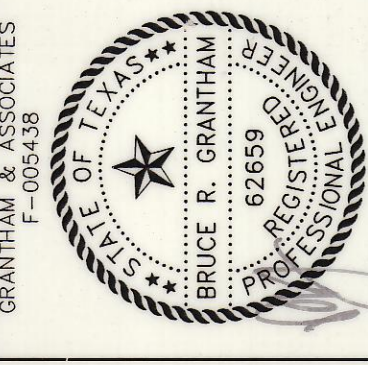
B.M. #3
 N = 5417.84
 E = 4817.72
 ELEVATION = 488.00
 FOUND ON IRON ROD FOUND ONE HALF EIGHTHS INCH IN DIAMETER

B.M. #4
 N = 5588.17
 E = 5052.41
 ELEVATION = 414.36
 FOUND ON IRON ROD FOUND ONE HALF EIGHTHS INCH IN DIAMETER

B.M. #5
 N = 5580.73
 E = 4818.21
 ELEVATION = 488.00
 FOUND ON IRON ROD FOUND ONE HALF EIGHTHS INCH IN DIAMETER

RECORD DRAWING
 BASED ON CONTRACTOR MARKUPS
 NOT FIELD SURVEY

DATE: FEBRUARY 2009 | SCALE: 1"=40' | JOB NO.: 1057-06
 DRAWN: GKA DESIGN | BRG REVIEWED: BRG DWG: 1057DMCONTROL
 MIXED USE DEVELOPMENT
 TOWN OF ADDISON
 DIMENSIONAL CONTROL PLAN
SNK DEVELOPMENT INC.
 Grantham & Associates
 Civil Engineering
 1915 S. WICHITA ROAD, SUITE 400, L.B. 8
 GARLAND, TEXAS 75042
 (972) 864-2333 (TEL)
 (972) 864-2334 (FAX)



THE SEAL APPEARING ON THIS DOCUMENT IS THE PROPERTY OF BRUCE R. GRANTHAM AND IS NOT TO BE REPRODUCED OR COPIED IN ANY MANNER WITHOUT THE WRITTEN PERMISSION OF BRUCE R. GRANTHAM. ANY REPRODUCTION OF THIS SEAL WITHOUT THE WRITTEN PERMISSION OF BRUCE R. GRANTHAM IS A VIOLATION OF THE TEXAS ENGINEERING PRACTICE ACT.

