

NO.	DATE	REVISION	APPROV.
1			
2			
3			

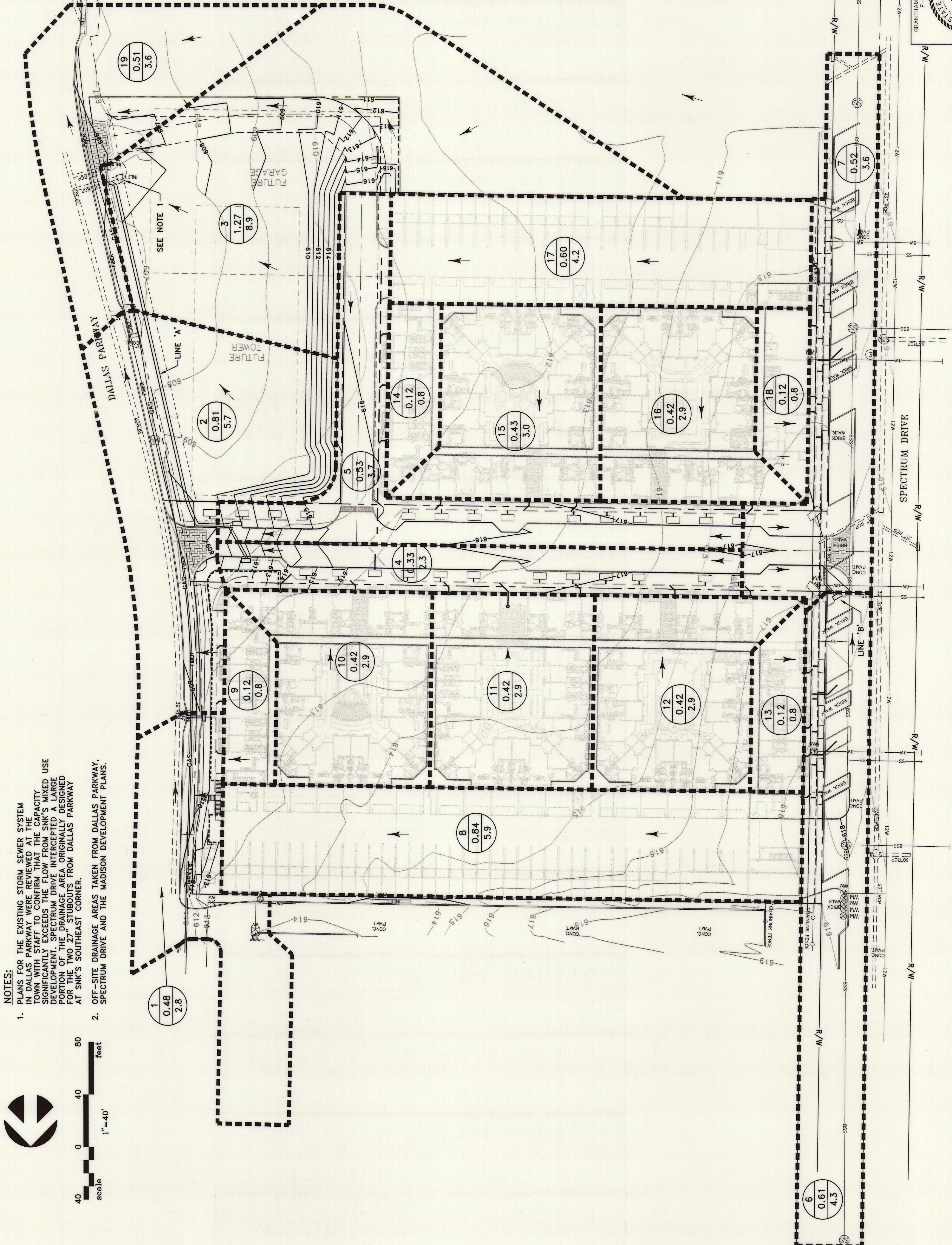
DRAINAGE AREA CALCULATIONS

DRAINAGE AREA NO.	AREA (ACRES)	C	Tc (MINUTES)	1 100 YR (IN/HR)	Q (cfs)	Q (100-YR)
1	0.40	0.80	10	8.74	2.8	2.8
2	0.81	0.80	10	8.74	5.7	5.7
3	1.27	0.80	10	8.74	8.9	8.9
4	0.33	0.80	10	8.74	2.3	2.3
5	0.53	0.80	10	8.74	3.7	3.7
6	0.61	0.80	10	8.74	4.3	4.3
7	0.52	0.80	10	8.74	3.6	3.6
8	0.84	0.80	10	8.74	5.9	5.9
9	0.12	0.80	10	8.74	0.8	0.8
10	0.42	0.80	10	8.74	2.9	2.9
11	0.42	0.80	10	8.74	2.9	2.9
12	0.42	0.80	10	8.74	2.9	2.9
13	0.12	0.80	10	8.74	0.8	0.8
14	0.12	0.80	10	8.74	0.8	0.8
15	0.43	0.80	10	8.74	3.0	3.0
16	0.42	0.80	10	8.74	2.9	2.9
17	0.60	0.80	10	8.74	4.2	4.2
18	0.12	0.80	10	8.74	0.8	0.8
19	0.51	0.80	10	8.74	3.6	3.6

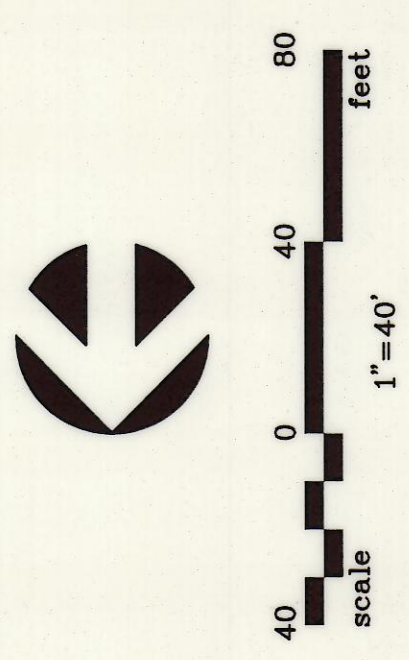
EXISTING INLET TABLE

INLET	DRAINAGE AREA	Q ₁₀₀ (cfs)	INLET SIZE (in)	GUTTER SLOPE (%)	INLET CAPACITY (cfs)	INLET CAPACITY C _p (cfs)	BYPASS FLOW (cfs)
Line 'A'	5	3.7	6	8.3%	0.65	4.0	0
Line 'A'-1'	4	2.3	6	8.3%	0.62	3.7	0
Line 'B'	6	4.3	6	SAG	0.57	9.0	0
Line 'B'-1'	2	2.9	6	0.7%	0.62	3.3	0
Off-site Inlet '1'	19	3.6	20	1.0%	0.55	11.0	0

Note: Inlet capacity taken from Town of Addison Drainage Criteria Manual Figure 4-4



- NOTES:**
- PLANS FOR THE EXISTING STORM SEWER SYSTEM AND THE PROPOSED STORM SEWER SYSTEM FOR THE TOWN OF ADDISON TO CONFIRM THAT THE CAPACITY SIGNIFICANTLY EXCEEDS THE FLOW FROM SNK'S MIXED USE DEVELOPMENT. SPECTRUM DRIVE INTERCEPTS A LARGE PORTION OF THE DRAINAGE AREA ORIGINALLY DESIGNED FOR THE TWO 27" STUBOUTS FROM DALLAS PARKWAY AT SNK'S SOUTHEAST CORNER.
 - OFF-SITE DRAINAGE AREAS TAKEN FROM DALLAS PARKWAY, SPECTRUM DRIVE AND THE MADISON DEVELOPMENT PLANS.



RECORD DRAWING
 BASED ON CONTRACTOR MARKUPS
 NOT FIELD SURVEY

- LEGEND:**
- DRAINAGE AREAS
 - PROPOSED STORM
 - EXISTING STORM
 - DRAINAGE AREA
 - ACRES
 - Q₁₀₀
 - FLOW ARROW

DATE: FEBRUARY 2009 SCALE: 1"=40' JOB NO.: 1057-06
 DRAWN: G&A DESIGN: BRG REVIEWED: BRG DWG: 1057DRNAREA

**MIXED USE DEVELOPMENT
 TOWN OF ADDISON
 DRAINAGE AREA MAP & CALCULATIONS**

SNK DEVELOPMENT INC.

g&a Grantham & Associates
 Civil Engineering
 1919 S. SULLY ROAD, SUITE 400, L.B. 8
 GARLAND, TEXAS 75042
 (972) 864-2334 (TEL)
 (972) 864-2334 (FAX)

SHT. 6
 OF 11

GRANTHAM & ASSOCIATES
 ENGINEERS
 3111 REGENT SQUARE
 SUITE 200
 DALLAS, TEXAS 75244
 (972) 864-2334
 (972) 864-2334 (FAX)

THE SEAL APPEARING ON THIS DOCUMENT WAS AUTHORIZED BY: BRG ON 11/10/09
 ALTERATION OF A SEALED DOCUMENT WITHOUT PROPER NOTIFICATION IS A VIOLATION OF THE PROFESSIONAL ENGINEERING ACT UNDER THE TEXAS ENGINEERING PRACTICE ACT.