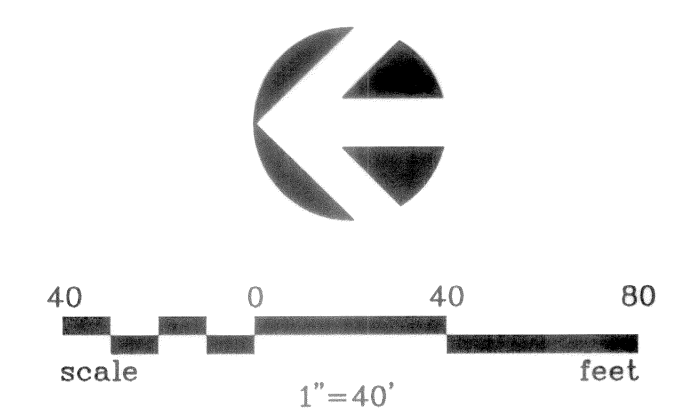
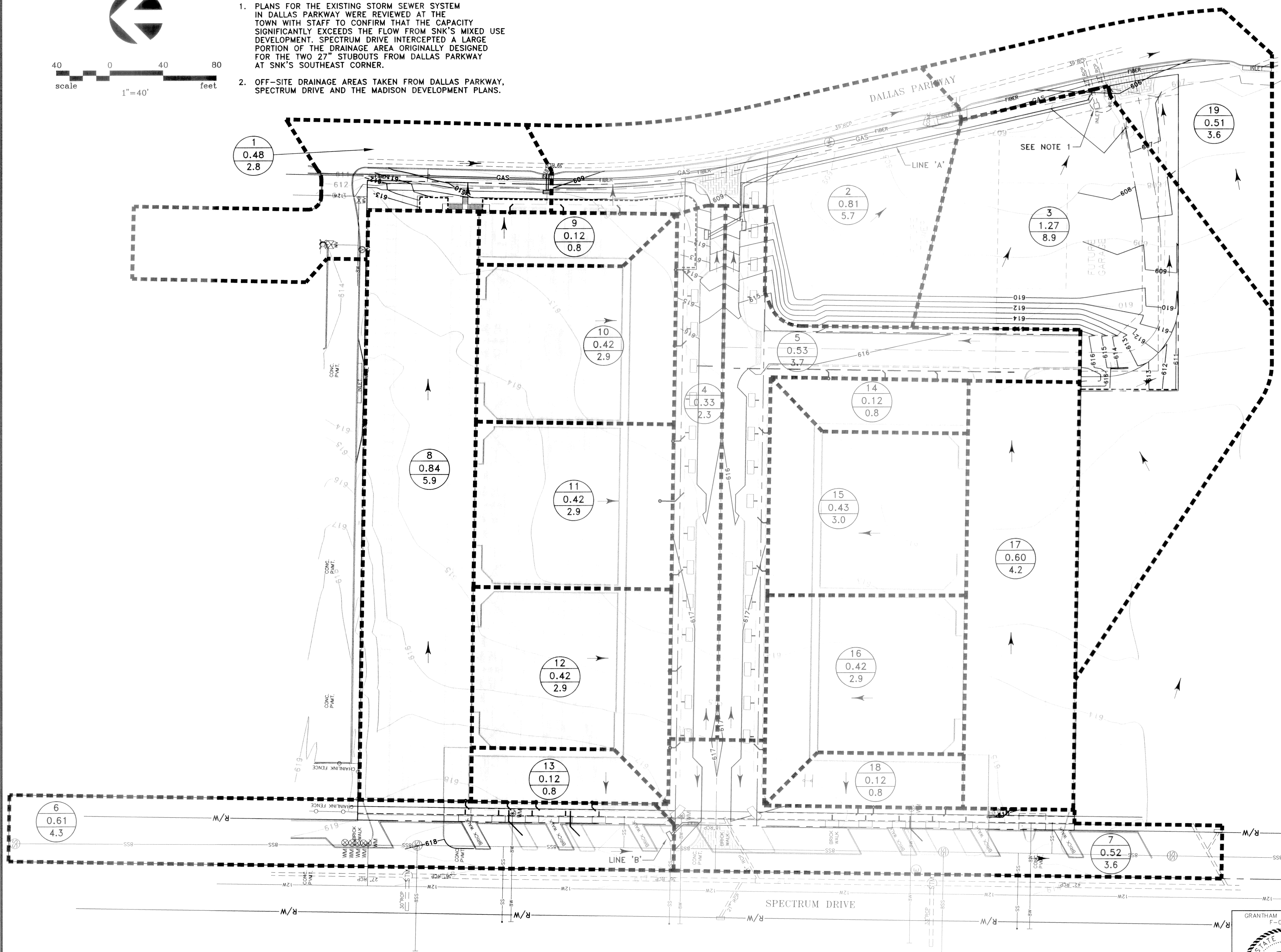


NO.	DATE	REVISION	APPROV.
1			
2			
3			



- NOTES:**
- PLANS FOR THE EXISTING STORM SEWER SYSTEM IN DALLAS PARKWAY WERE REVIEWED AT THE TOWN WITH STAFF TO CONFIRM THAT THE CAPACITY SIGNIFICANTLY EXCEEDS THE FLOW FROM SNK'S MIXED USE DEVELOPMENT. SPECTRUM DRIVE INTERCEPTS A LARGE PORTION OF THE DRAINAGE AREA ORIGINALLY DESIGNED FOR THE TWO 27" STUBOUTS FROM DALLAS PARKWAY AT SNK'S SOUTHEAST CORNER.
  - OFF-SITE DRAINAGE AREAS TAKEN FROM DALLAS PARKWAY, SPECTRUM DRIVE AND THE MADISON DEVELOPMENT PLANS.



**DRAINAGE AREA CALCULATIONS**

DRAINAGE AREA NO.	AREA (ACRES)	C	Tc (MINUTES)	1 100 YR (IN/HR)	Q (cfs) (100-YR)
1	0.40	0.80	10	8.74	2.8
2	0.81	0.80	10	8.74	5.7
3	1.27	0.80	10	8.74	8.9
4	0.33	0.80	10	8.74	2.3
5	0.53	0.80	10	8.74	3.7
6	0.61	0.80	10	8.74	4.3
7	0.52	0.80	10	8.74	3.6
8	0.84	0.80	10	8.74	5.9
9	0.12	0.80	10	8.74	0.8
10	0.42	0.80	10	8.74	2.9
11	0.42	0.80	10	8.74	2.9
12	0.42	0.80	10	8.74	2.9
13	0.12	0.80	10	8.74	0.8
14	0.12	0.80	10	8.74	0.8
15	0.43	0.80	10	8.74	3.0
16	0.42	0.80	10	8.74	2.9
17	0.60	0.80	10	8.74	4.2
18	0.12	0.80	10	8.74	0.8
19	0.51	0.80	10	8.74	3.6

**EXISTING INLET TABLE**

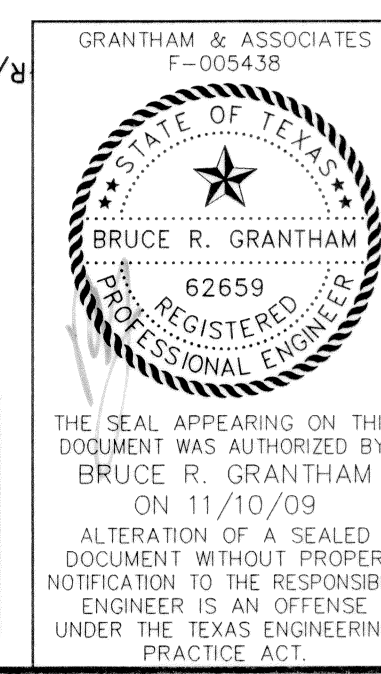
INLET	DRAINAGE AREA	Q <sub>100</sub>	INLET SIZE	GUTTER SLOPE	INLET CAPACITY	INLET C <sub>p</sub> CAPACITY	BYPASS F <sub>100</sub>
		(cfs)	(ft)	(%)	(cfs/ft)	(cfs)	(cfs)
Line 'A'	5	3.7	6	8.3%	0.66	4.0	0
Lat 'A-1'	4	2.3	6	8.3%	0.62	3.7	0
Line 'B'	6	4.3	6	SAG	1	6.0	0
Lat '1'	1	2.8	6	0.6%	0.57	3.4	0
Off-site Inlet '1'	2	5.7	15	0.7%	0.62	9.3	0
Off-site Inlet '2'	19	3.6	20	1.0%	0.55	11.0	0

Note: Inlet capacity taken from Town of Addison Drainage Criteria Manual Figure 4-4

**LEGEND:**

- DRAINAGE AREAS
- PROPOSED STORM
- EXISTING STORM
- DRAINAGE AREA ACRES
- Q<sub>100</sub>
- FLOW ARROW

**RECORD DRAWING**  
BASED ON CONTRACTOR MARKUPS  
NOT FIELD SURVEY



DATE: FEBRUARY 2009 SCALE: 1"=40' JOB NO.: 1057-06  
 DRAWN: G&A DESIGN: BRG REVIEWED: BRG DWG: 1057DRNAREA

**MIXED USE DEVELOPMENT  
TOWN OF ADDISON  
DRAINAGE AREA MAP & CALCULATIONS**

**SNK DEVELOPMENT INC.**

**g&a** Grantham & Associates **SHT. 6**  
Civil Engineering **OF 11**

1919 S. SHILOH ROAD, SUITE 440, L.B. 8 GARLAND, TEXAS 75042 (972) 864-2333 (TEL) (972) 864-2334 (FAX)