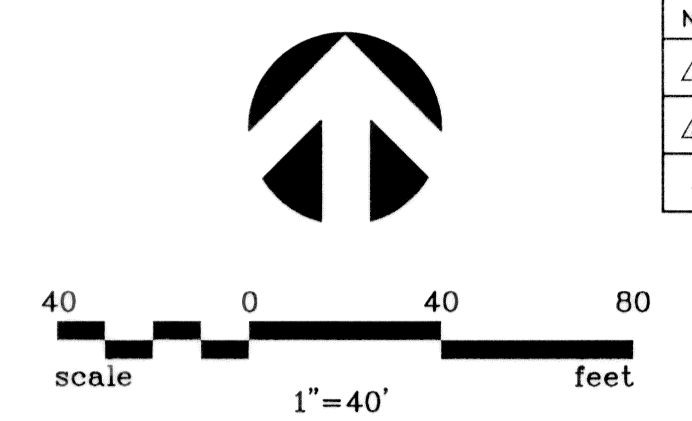


NO.	DATE	REVISION	APPROV.
1	10/19/07	REVISED FIRE HYDRANT LOCATION & DETAIL	BRG
2	11/16/07	REVISED WATER METER LOCATION & DETAIL	BRG
3			

12" WATER CURVE DATA:

NUMBER	RADIUS	DELTA	ARC LENGTH	CHORD BEARING	CHORD LENGTH
C1	300.00'	05°18'32"	27.80'	S 04°04'45" W	27.79'
C2	300.00'	05°18'32"	27.80'	S 04°04'45" W	27.79'
C3	300.00'	07°10'15"	37.55'	S 02°09'39" E	37.52'
C4	300.00'	02°59'58"	15.70'	S 04°14'48" E	15.70'
C5	500.00'	10°08'07"	88.45'	S 07°48'52" E	88.33'



GENERAL NOTES:

- ALL WATER MAINS SHALL BE AWWA C909 PVC WATER PIPE.
- ALL WATER MAINS SHALL HAVE MINIMUM COVER AS FOLLOWS: 48" BELOW FINISHED STREET GRADE OR 60" DEPTH IN UNIMPROVED STREETS OR AS REQUIRED TO CLEAR OTHER UTILITIES.
- EXTEND WATER DEADHEADS AND WASTEWATER LATERALS 2' BEYOND PROPOSED BACK OF CURB OR AS SHOWN.
- WATER AND WASTEWATER EASEMENTS SHALL ALSO INCLUDE ADDITIONAL AREA OF WORKING SPACE FOR CONSTRUCTION AND MAINTENANCE OF THE SYSTEM.
- ALL WATER DEADHEADS SHALL BE COPPER AND LOCATED AND SIZED AS SHOWN, ON THE PLANS.
- ALL WASTEWATER LATERALS SHALL BE LOCATED AND SIZED AS SHOWN ON THE PLANS.
- ALL 8" & 6" WASTEWATER MAINS WHERE PVC PIPE IS USED SHALL BE ASTM 3034 (SDR-35) OR ASTM F789/D3212.
- WATER DEADHEADS AND WASTEWATER LATERALS TO EXISTING MAINS SHALL BE INSTALLED BY CONTRACTOR.
- THE CERTIFICATE OF ACCEPTANCE (C.O.A.) WILL NOT BE ISSUED UNTIL ALL WATER AND WASTEWATER APPURTENANCES HAVE BEEN ADJUSTED TO THEIR FINAL POSITION.
- SET NOZZLE OF FIRE HYDRANT AT HEIGHT OF 18" TO 24" ABOVE FINISH GROUND ELEVATION. LOCATION OF F.H. SHALL BE 2' TO 6' BEHIND CURB LINE.
- THE MAXIMUM ALLOWABLE TRENCH WIDTH FOR ALL PIPE THROUGH 12" DIAMETER SHALL BE 32".
- ALL EXISTING UTILITIES SHOWN ARE APPROXIMATE ONLY. CONTRACTOR SHALL VERIFY ALL EXISTING UTILITY LOCATIONS AND ELEVATIONS PRIOR TO STARTING CONSTRUCTION.
- ANY WATER OR SANITARY SEWER SERVICE LOCATED OUTSIDE OF A STREET, ALLEY OR EASEMENT SHALL BE INSTALLED BY A PLUMBER AND BE INSPECTED BY CODE ENFORCEMENT.
- REFER TO GENERAL NOTES SHEET FOR GENERAL NOTES.
- CONTRACTOR SHALL MATCH FLOWLINE OF 8" SS LATERALS WITH 8" PLUMBING LINES AT LABELED [SS].
- CONTRACTOR SHALL COORDINATE ALL TAPS TO EXISTING WATER MAINS WITH CITY INSPECTOR TO MINIMIZE DISRUPTION TO WATER SERVICE.

CONTRACTOR TO STAKE DRIVEWAY LIMITS AND FIELD VERIFY EXISTING IRRIGATION FACILITIES. RELOCATE ALL EXISTING WATER METERS, DOUBLE CHECK/DETECTOR CHECK VAULTS, IRRIGATION CONTROL VALVES, PIPING, ETC. THAT CONFLICTS WITH PROPOSED PAVING. ALL REPLACEMENT IRRIGATION FACILITIES SHALL MEET TOWN STANDARDS.

!!!CAUTION!!!
UNDERGROUND UTILITIES PRESENT IN THIS AREA. CALL 1-800-DIG-TESS PRIOR TO CONSTRUCTION

CONTRACTOR SHALL VERIFY HORIZONTAL AND VERTICAL LOCATIONS OF EXIST. 8" WATER CONNECT TO EXIST 8" WATER BEGIN 8" WATER
INSTALL:
1-8" 90° BEND
44 L.F. 8" WATER
2-8"x6" TEES
1-6" VALVE
1-F.H.
1-8"x6" REDUCER
5-6" 90° BENDS

!!!CAUTION!!!
UNDERGROUND UTILITIES PRESENT IN THIS AREA. CALL 1-800-DIG-TESS PRIOR TO CONSTRUCTION

STA. 1+00.00
CONSTRUCT STD. 4' DIA. M.H. OVER EXIST. 8" SAN. SEW.
N = 5310.63
E = 4417.22

!!!CAUTION!!!
UNDERGROUND UTILITIES PRESENT IN THIS AREA. CALL 1-800-DIG-TESS PRIOR TO CONSTRUCTION

CONTRACTOR SHALL VERIFY HORIZONTAL AND VERTICAL LOCATIONS OF EXIST. 8" WATER CONNECT TO EXIST 8" WATER BEGIN 8" WATER
INSTALL:
1-8"x8" TEE
1-8"x6" TEE
1-8"x4" REDUCER
1-8"x6" REDUCER
2-4" 90° BENDS
1-6" 90° BEND
36 L.F. 6" WATER
1-6" VALVE
1-F.H.

- INSTALL 38 L.F. OF 8" SAN. SEW. @ 1.0%
- INSTALL 40 L.F. OF 8" SAN. SEW. @ 1.0%
- INSTALL 38 L.F. OF 8" SAN. SEW. @ 1.0%
- INSTALL 20 L.F. OF 8" SAN. SEW. @ 1.0%
- INSTALL 18 L.F. OF 8" SAN. SEW. @ 1.0%
- INSTALL 19 L.F. OF 8" SAN. SEW. @ 1.0%

INSTALL 6" DOMESTIC WATER SERVICE LINE & 6" CLOSED FIRELINE SERVICE SEE PLUMBING PLANS FOR CONNECTION TO BUILDING AND DOUBLE CHECK VALVE BACK FLOW PREVENTION ASSEMBLY LOCATION

12 L.F. 8" WATER TO BE LOWERED UNDER STORM SEWER PER CITY STANDARDS REMOVE EXISTING 8" WATER AS NEEDED

STA. 2+44.00 LINE 'A'
CONSTRUCT STD. 4' DIA. M.H.
N = 5308.32
E = 4560.64

STA. 3+46.00 LINE 'A'
CONSTRUCT STD. 4' DIA. M.H.
N = 5306.68
E = 4663.23

STA. 4+74.00 LINE 'A'
CONSTRUCT STD. 4' DIA. M.H.
N = 5304.62
E = 4791.18

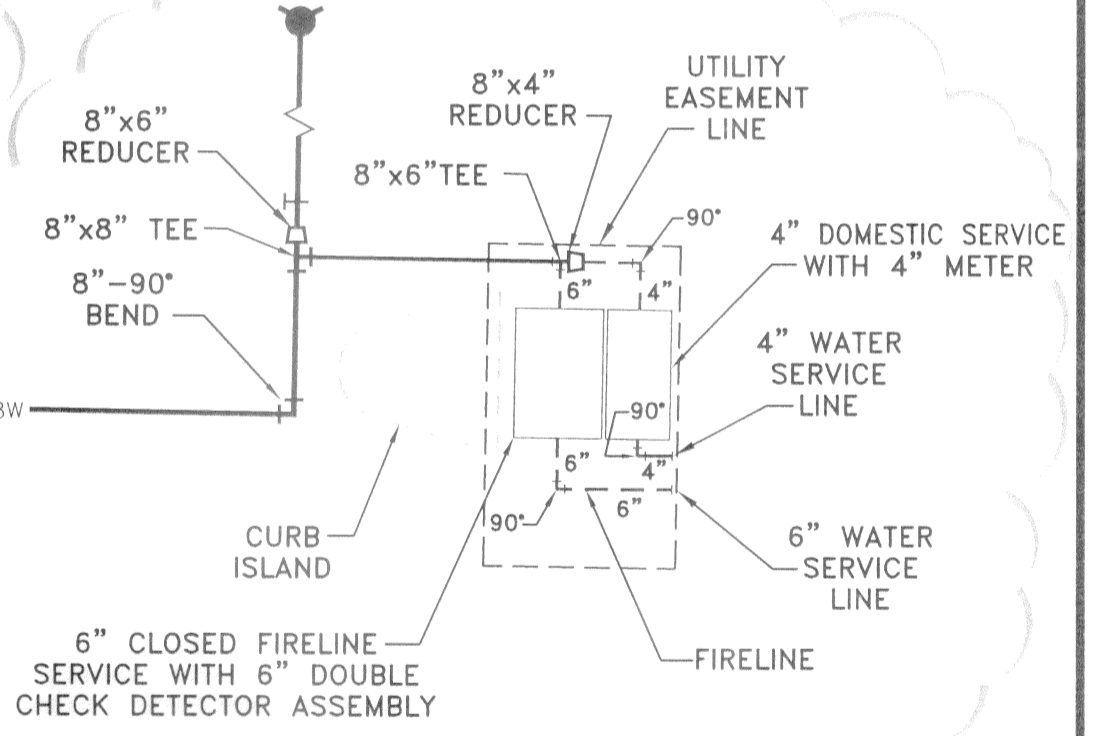
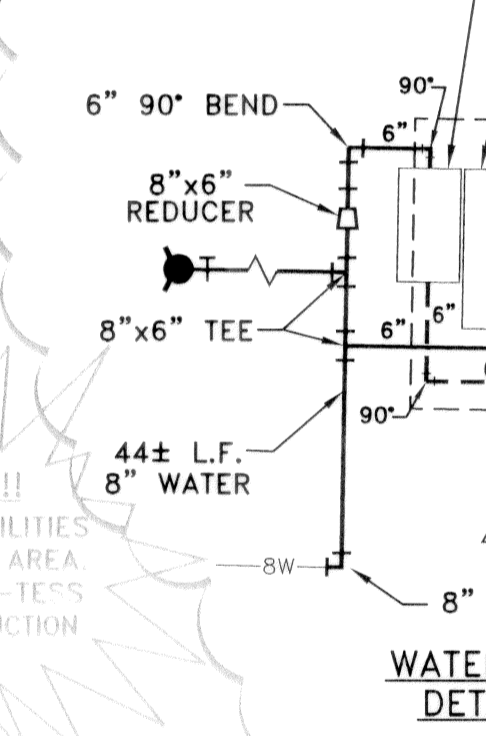
STA. 0+99.20
CONTRACTOR SHALL VERIFY HORIZONTAL AND VERTICAL LOCATIONS OF EXIST. 12" WATER & REMOVE 12" PLUG CONNECT TO EXIST 12" WATER BEGIN 12" WATER
INSTALL:
1-12" VALVE
1-12" 45° BEND
N=5580.91
E=4905.71

P.I. STA. 1+14.17
INSTALL:
1-12" 45° BEND
N=5569.24
E=4913.89

!!!CAUTION!!!
UNDERGROUND UTILITIES PRESENT IN THIS AREA. CALL 1-800-DIG-TESS PRIOR TO CONSTRUCTION

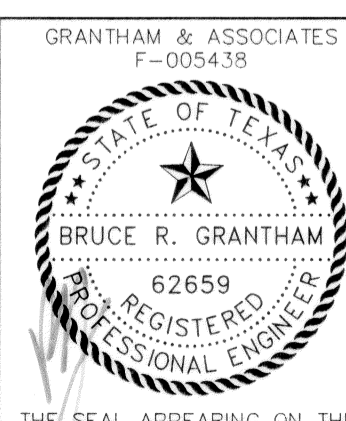
STA. 4+00.00
INSTALL:
1-12"x6" TEE
1-12" VALVE
1-6" VALVE
1-F.H.

STA. 4+10.00
INSTALL:
1-12" PLUG
N = 5275.28
E = 4928.52



WATER METER DETAIL 'B' NOTE:
1. METER VAULTS MUST BE LOCATED BEHIND CURB ISLAND. (SEE CURB DETAIL SHEET 10)

RECORD DRAWING
BASED ON CONTRACTOR MARKUPS
NOT FIELD SURVEY



DATE: FEBRUARY 2009	SCALE: 1"=40'	JOB NO.: 1057-06
DRAWN: G&A	DESIGN: BRG	REVIEWED: BRG
DWG: 1057WATSEW01		

**MIXED USE DEVELOPMENT
TOWN OF ADDISON
WATER AND SANITARY SEWER PLAN**

SNK DEVELOPMENT INC.

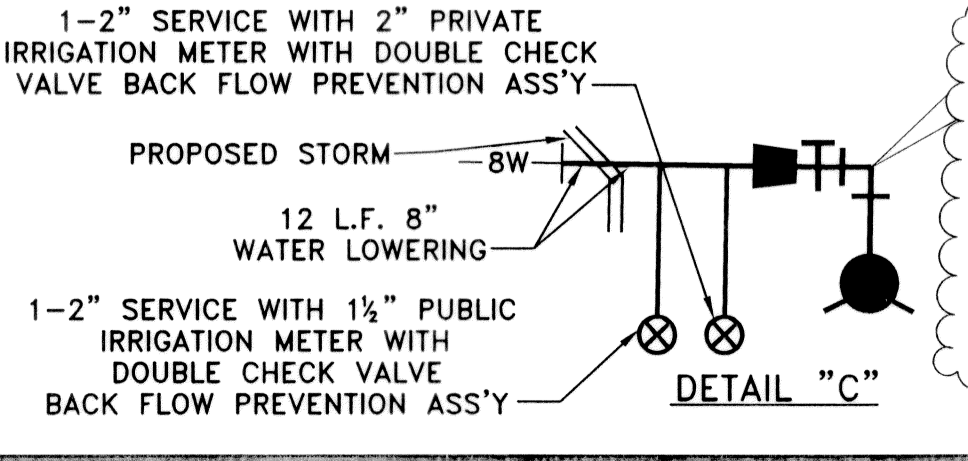
g&a Grantham & Associates
Civil Engineering

1919 S. SHILOH ROAD, SUITE 440, L.B. 8 GARLAND, TEXAS 75042 (972) 864-2333 (TEL) (972) 864-2334 (FAX)

SHT. 8
OF 11

LEGEND:

- PROP. WATER LINE
- PROP. FIRE HYDRANT AND VALVE
- PROP. WATER SERVICE AND METER
- PROP. SANITARY SEWER
- PROP. MANHOLE
- PROP. SANITARY SEWER SERVICE
- INSTALL DOUBLE CLEANOUT AT R.O.W. LINE. CONNECT PROP. 8" SANITARY SEWER SERVICE TO PLUMBING LINE.



CONTRACTOR SHALL VERIFY HORIZONTAL AND VERTICAL LOCATIONS OF EXIST. 8" WATER REMOVE PLUG & VAULT CONNECT TO EX. 8" WATER
INSTALL:
30 L.F. 8" WATER
1-8"x6" REDUCER
1-6" VALVE
1-6" 90° BEND
1-F.H.