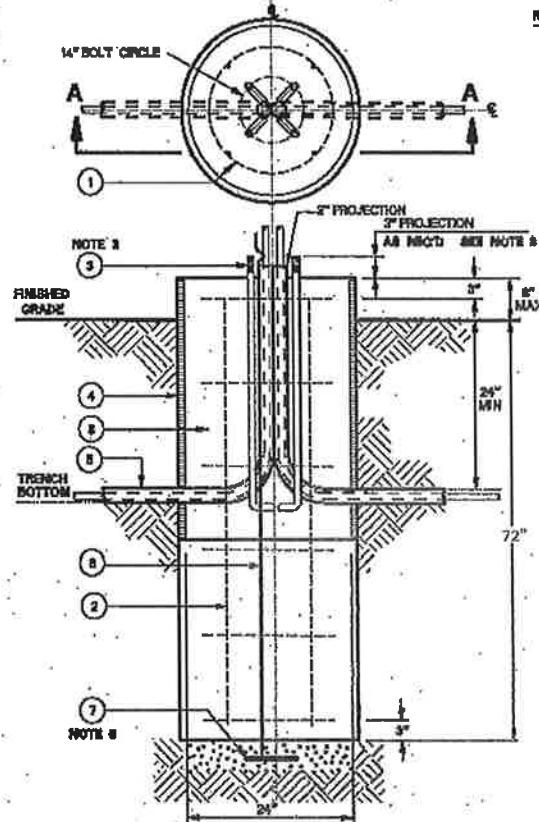


**STREET LIGHT FOUNDATION
26', 30' & 40' SQUARE STEEL POLE
40' M.H. ROUND STEEL POLE**



NOTES:

1. CONCRETE TO BE MINIMUM 3000 PSI AT 28 DAYS. (5 BAGS) MAXIMUM AGGREGATE 3/4" TOP OF FOUNDATION TO BE TROWELED TO A FLAT AND LEVEL SURFACE. AVOID EXCESSIVE TROWELING. CONCRETE TO SET A MINIMUM OF 72 HOURS BEFORE POLE INSTALLATION.
2. REBAR HOOPS ARE TIED BEGINNING 3" BELOW TOP OF CONCRETE FORM AND ARE REPEATED AT APPROXIMATE 1' INTERVALS TO BOTTOM OF FOUNDATION.
3. 1" ANCHOR BOLTS TO BE USED WITH 26' & 30' POLES. 1 1/4" ANCHOR BOLTS TO BE USED WITH 40' POLE. USE TEMPLATE FURNISHED BY POLE MANUFACTURER FOR ALIGNING ANCHOR BOLTS. PROJECTION OF 3" ON 26' & 30' SQUARES AND 3 1/2" ON 40' SQUARE AND ROUND POLES.
4. CONCRETE FORM OF SONOTUBE TO EXTEND TO BOTTOM OF TRENCH OR AS NEEDED.
5. PROVIDE MINIMUM 24" GROUND WIRE PASTAL OUT OF CONCRETE FOR CONNECTION TO POLE.
6. A MINIMUM OF 12' OF BARE #8 SD CU WIRE TO BE PLACED IN BOTTOM OF HOLE AND COVERED WITH 2" OF DIRT.
7. IF SOIL HAS BEEN DISTURBED, EXTEND FOUNDATION BY DEPTH OF DISTURBED SOIL.

| ITEM | QTY | DESCRIPTION | TSN/REF | CU | MU |
|------|---------|--|---------|---------|----|
| 1 | 6 | #8 REBAR, 1/2" DIAMETER HOOP, 3" OVERLAP | 334470 | | |
| 2 | 4 | #8 REBAR, STRAIGHT, 60" LONG | 277821 | | |
| 3 | 4 | ANCHOR BOLT, GALV. 1" FOR 26' & 30' POLES | 218285 | 5117200 | |
| 3 | 4 | ANCHOR BOLT, 1 1/4" GALV FOR 40' POLES | 378286 | 511740 | |
| 4 | AS REQD | CONCRETE FOUNDATION TUBE, 24" DIAMETER | 372641 | | |
| 5 | AS REQD | CONDUIT, PVC OR PEG BROT IN FOUNDATION ALIGN | | | |
| 6 | 5 LB | WIRE, #8 COPPER, SOLID | 303244 | | |
| 7 | 1 | GROUND POLE BUTT WIRE COIL | | | |
| 8 | AS REQD | CONCRETE | | | |

APPROVED BY

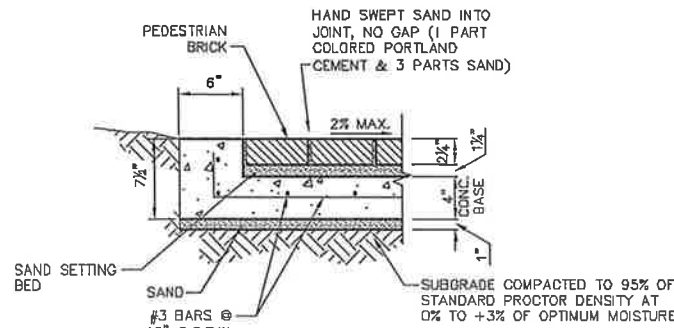


GENERAL NOTES

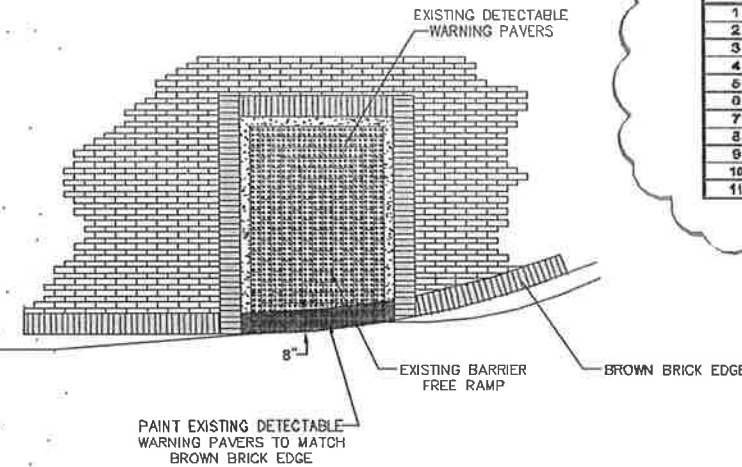
1. ALL CONSTRUCTION SHALL BE IN STRICT ACCORDANCE WITH THE CONSTRUCTION STANDARDS OF THE TOWN OF ADDISON AND GOVERNED BY THE NORTH CENTRAL TEXAS COUNCIL OF GOVERNMENT'S (NCTCOG) STANDARD SPECIFICATIONS FOR PUBLIC WORKS CONSTRUCTION, 3RD EDITION.
2. IN CASE OF CONFLICT OR CONTRADICTIONS BETWEEN THE CONSTRUCTION STANDARDS OF THE TOWN OF ADDISON AND THE NCTCOG SPECIFICATIONS, THE CONSTRUCTION STANDARDS OF THE TOWN OF ADDISON PRESIDE.
3. IT IS THE CONTRACTOR'S RESPONSIBILITY TO MAKE ARRANGEMENTS WITH THE OWNERS OF UNDERGROUND FACILITIES PRIOR TO WORKING IN THE AREA TO CONFIRM THEIR LOCATION. THE CONTRACTOR SHALL PRESERVE AND PROTECT ALL UNDERGROUND FACILITIES.
4. WHERE EXISTING UTILITIES OR SERVICE LINES ARE CUT, BROKEN OR DAMAGED, THE CONTRACTOR SHALL REPLACE OR REPAIR THE UTILITIES OR SERVICE LINES WITH THE SAME TYPE OF ORIGINAL MATERIAL AND CONSTRUCTION, OR BETTER, UNLESS OTHERWISE SHOWN OR NOTED ON THE PLANS, AT HIS OWN COST AND EXPENSE. THE CONTRACTOR SHALL IMMEDIATELY NOTIFY THE TOWN AT ONCE OF ANY CONFLICTS IN GRADES AND ALIGNMENT.
5. FOR FRANCHISE UTILITY LOCATOR SERVICES, CALL TEXAS 811.
6. THE CONTRACTOR SHALL RESTORE ALL AREAS DISTURBED BY CONSTRUCTION TO ORIGINAL CONDITION OR BETTER. RESTORED AREAS INCLUDE, BUT ARE NOT LIMITED TO TRENCH BACKFILL, SIDE SLOPES, FENCES, CULVERT PIPES, DRAINAGE DITCHES, IRRIGATION, SODDING OR SEEDING, DRIVEWAYS, PRIVATE YARDS AND ROADWAYS.
7. THE CONTRACTOR SHALL TAKE ALL NECESSARY PRECAUTIONS TO PROTECT EXISTING FACILITIES FROM DAMAGE. ANY DAMAGE TO EXISTING FACILITIES RESULTING FROM CONSTRUCTION WORK SHALL BE REPAIRED AT THE CONTRACTOR'S EXPENSE.
8. ALL EXCESS EXCAVATED MATERIAL AND STRIPPINGS SHALL BECOME THE PROPERTY OF THE CONTRACTOR AND SHALL BE DISPOSED OF IN A PROPER MANNER OFF THE PROJECT SITE.

SAFETY

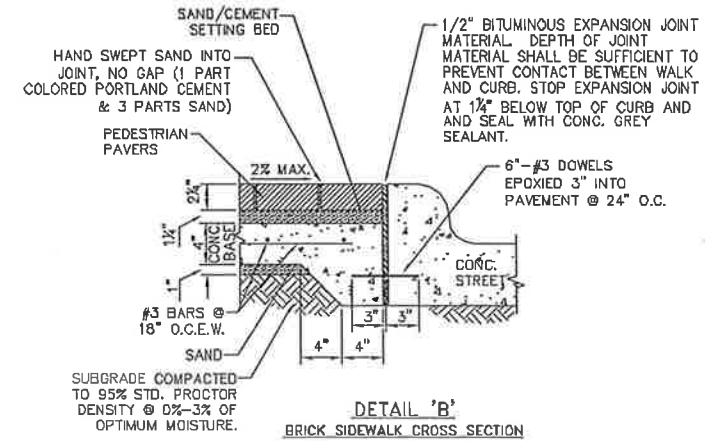
1. ALL CONTRACTORS AND DEVELOPERS, WITH THEIR EMPLOYEES AND AGENTS, SHALL COMPLY WITH ALL APPLICABLE FEDERAL, STATE AND LOCAL SAFETY LAWS AND REGULATIONS INCLUDING BUT NOT LIMITED TO THE OCCUPATIONAL SAFETY AND HEALTH ACT OF 1970, ORDINANCES, RULES, REGULATIONS AND ORDERS OR ANY PUBLIC AUTHORITY HAVING JURISDICTION FOR THE SAFETY OF PERSONS OR PROPERTY TO PROTECT THEM FROM DAMAGE, INJURY OR LOSS. THE CONTRACTOR SHALL PROVIDE, ERECT AND MAINTAIN, AS REQUIRED BY EXISTING CONDITIONS AND PROGRESS OF THE WORK, ALL REASONABLE SAFEGUARDS FOR SAFETY AND PROTECTION, INCLUDING PROVIDING AND MAINTAINING SIGNS IN ACCORDANCE WITH THE MOST CURRENT BARRICADE AND CONSTRUCTION STANDARDS FROM THE TEXAS MANUAL OF UNIFORM CONTROL DEVICES (AND OTHER SUCH BARRICADES AND SIGNS AS DEEMED NECESSARY BY THE TOWN ENGINEER), PROMULGATED SAFETY REGULATIONS AND NOTIFYING OWNERS AND USERS OF ADJACENT UTILITIES. SAFETY PRECAUTIONS SHALL INCLUDE BUT NOT BE LIMITED TO COMPLIANCE WITH ALL FEDERAL, STATE AND LOCAL STANDARDS, LAWS, ORDINANCES AND STANDARDS FOR DESIGN AND IMPLEMENTATION OF TRENCH SAFETY, CONFINED SPACE, TRAFFIC CONTROL, AND UTILITY NOTIFICATION.



DETAIL 'A'
BRICK SIDEWALK CROSS SECTION



DETAIL 'C'
CURB RAMP PAINTING DETAIL



DETAIL 'B'
BRICK SIDEWALK CROSS SECTION

| ITEM NO. | DESCRIPTION | QUANTITIES | | | | | TOTAL |
|----------|--|------------|----|---|----|----|-------|
| | | 1 | 2 | 3 | 4 | 5 | |
| 1 | MOBILIZATION (MAXIMUM 5% OF CONTRACT) | LS | | | | | 1 |
| 2 | BARRICADE, SIGNAGE, & TRAFFIC CONTROL | LS | | | | | 1 |
| 3 | PAINT 2" STRIPE ON EXISTING CURB RAMP | EA | 31 | | | | 31 |
| 4 | RELOCATE EXISTING STREET LIGHT | EA | | | | | 2 |
| 5 | REMOVE PAVERS, GRIND CONC. BASE OR ADD SAND/CEMENT BEDDING, & REINSTALL PAVERS | SY | | 2 | 23 | 27 | 116 |
| 6 | ADJUST EXISTING STORM SEWER MANHOLE LID | EA | | 1 | | | 1 |
| 7 | SAWCUT, REMOVE & REPLACE BRICK SIDEWALK AND CONC. BASE | SY | | | 2 | | 2 |
| 8 | REMOVE & REPLACE STONE FACING | LF | | | 10 | | 19 |
| 9 | SAWCUT, REMOVE & REPLACE BRICK SIDEWALK RAMP AND CONC. BASE | SY | | | | 3 | 3 |
| 10 | RELOCATE EXISTING STREET LIGHT PUSH BUTTON | EA | | | | 1 | 1 |
| 11 | ADJUST EXISTING TRAFFIC SIGNAL BOX | EA | | | | 1 | 1 |

PEDESTRIAN FACILITIES GENERAL NOTES

1. ALL SLOPES ARE MAXIMUM ALLOWABLE. THE LEAST POSSIBLE SLOPE THAT WILL STILL DRAIN PROPERLY SHOULD BE USED. ADJUST CURB RAMP LENGTH OR GRADE OF APPROACH SIDEWALKS AS DIRECTED.
2. THE MINIMUM SIDEWALK WIDTH IS 5'. WHERE THE SIDEWALK IS ADJACENT TO THE BACK OF CURB, A 6' SIDEWALK WIDTH IS REQUIRED. WHERE A 5' SIDEWALK CAN NOT BE PROVIDED DUE TO SITE CONSTRAINTS, A MINIMUM 3' SIDEWALK WITH 5'X 5' PASSING AREAS AT INTERVALS NOT TO EXCEED 200' IS REQUIRED.
3. LANDINGS SHALL BE 5'X5' MINIMUM WITH A MAXIMUM 2% SLOPE IN ANY DIRECTION.
4. MANEUVERING SPACE AT THE BOTTOM OF CURB RAMPS SHALL BE A MINIMUM OF 4'X4' WHOLLY CONTAINED WITHIN THE CROSSWALK AND WHOLLY OUTSIDE THE PARALLEL VEHICULAR TRAVEL PATH.
5. MAXIMUM ALLOWABLE CROSS SLOPE ON SIDEWALK AND CURB RAMP SURFACES IS 2%.
6. CURB RAMPS WITH RETURNED CURBS MAY BE USED ONLY WHERE PEDESTRIANS WOULD NOT NORMALLY WALK ACROSS THE RAMP, EITHER BECAUSE THE ADJACENT SURFACE IS PLANTING OR OTHER NON-WALKING SURFACE OR BECAUSE THE SIDE APPROACH IS SUBSTANTIALLY OBSTRUCTED. OTHERWISE, PROVIDE FLARED SIDES.
7. ADDITIONAL INFORMATION ON CURB RAMP LOCATION, DESIGN, LIGHT REFLECTIVE VALUE AND TEXTURE MAY BE FOUND IN THE CURRENT EDITION OF THE TEXAS ACCESSIBILITY STANDARDS (TAS) AND 16 TAC § 68.102.
8. TO SERVE AS A PEDESTRIAN REFUGE AREA, THE MEDIAN SHOULD BE A MINIMUM OF 5' WIDE. MEDIANS SHOULD BE DESIGNED TO PROVIDE ACCESSIBLE PASSAGE OVER OR THROUGH THEM.
9. SMALL CHANNELIZATION ISLANDS, WHICH DO NOT PROVIDE A MINIMUM 5'X 5' LANDING AT THE TOP OF CURB RAMPS, SHALL BE CUT THROUGH LEVEL WITH THE SURFACE OF THE STREET.
10. CROSSWALK DIMENSIONS, CROSSWALK MARKINGS AND STOP BAR LOCATIONS SHALL BE AS SHOWN ELSEWHERE IN THE PLANS. AT INTERSECTIONS WHERE CROSSWALK MARKINGS ARE NOT REQUIRED, CURB RAMPS SHALL BE ALIGNED WITH THEORETICAL CROSSWALKS, OR AS DIRECTED BY THE ENGINEER.
11. EXISTING FEATURES THAT COMPLY WITH TAS MAY REMAIN IN PLACE UNLESS OTHERWISE SHOWN ON THE PLANS.
12. HANDRAILS ARE NOT REQUIRED ON CURB RAMPS. PROVIDE CURB RAMPS WHEREVER AN ACCESSIBLE ROUTE CROSSES (PENETRATES) A CURB.
13. SEPARATE CURB RAMP AND LANDINGS FROM ADJACENT SIDEWALK AND ANY OTHER ELEMENTS WITH PREWOLD OR BOARD JOINT OF 3/4" UNLESS OTHERWISE DIRECTED BY THE ENGINEER.
14. PROVIDE A SMOOTH TRANSITION WHERE THE CURB RAMPS CONNECT TO THE STREET.
15. FLARE SLOPE SHALL NOT EXCEED 10% MEASURED ALONG CURB LINE.

11/04/10

GRANTHAM & ASSOCIATES
7-05135

STATE OF TEXAS
REGISTERED PROFESSIONAL ENGINEER
101252
CHRISTOPHER ROBINSON

THE SEAL APPEARING ON THIS DOCUMENT WAS AUTHORIZED BY P. CHRISTOPHER ROBINSON ON 11/04/2010. ALTERATION OF A SEALED DOCUMENT WITHOUT PROPER NOTIFICATION TO THE RESPONSIBLE ENGINEER IS AN OFFENSE UNDER THE TEXAS ENGINEERING PRACTICE ACT.

SPECTRUM DRIVE
SIDEWALK RECONSTRUCTION
REQUIRED FOR ADA COMPLIANCE

TOWN OF ADDISON

DATE: OCTOBER 2010
SCALE: NTS
DRAWN BY: C&A
DESIGN: BRC
REVIEWED: -
JOB NO: 22-0
DWG: 22CEN-0015

SHEET 1 OF 5