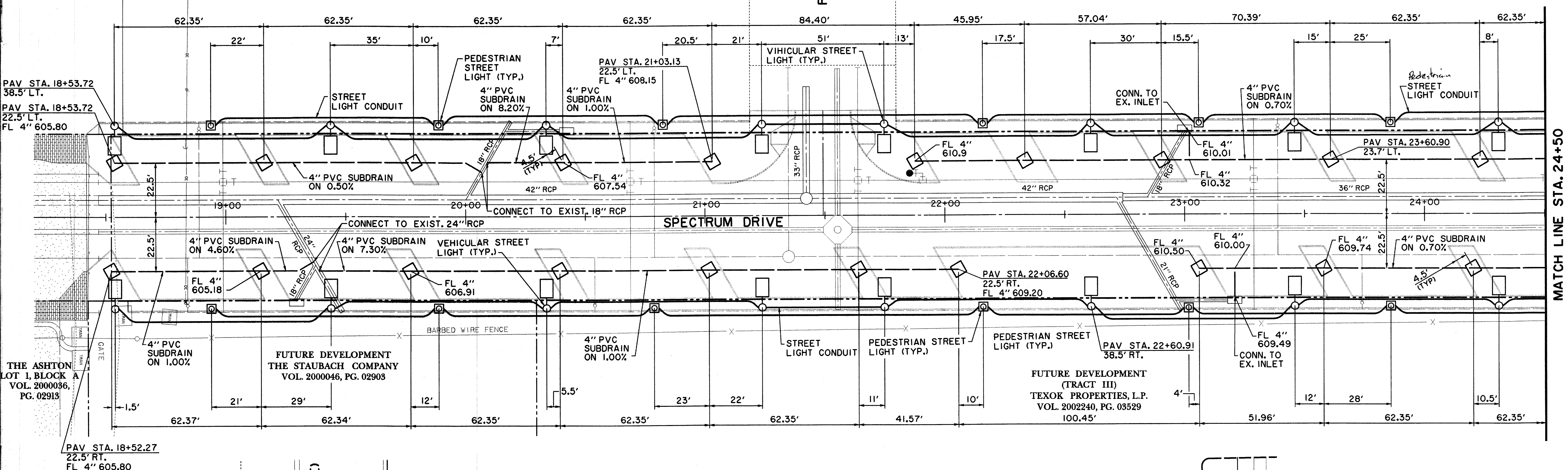


ADDISON CIRCLE
PHASE II
LOT 1, BLOCK D
VOL. 2000153, PG. 00015

FUTURE DEVELOPMENT
(TRACT III)
TEXOK PROPERTIES, L.P.
VOL. 2002240, PG. 03529

FUTURE DEVELOPMENT
(TRACT III)
TEXOK PROPERTIES, L.P.
VOL. 2002240, PG. 03529



THE ASHTON
LOT 1, BLOCK A
VOL. 2000036,
PG. 02913

FUTURE DEVELOPMENT
THE STAUBACH COMPANY
VOL. 2000046, PG. 02903

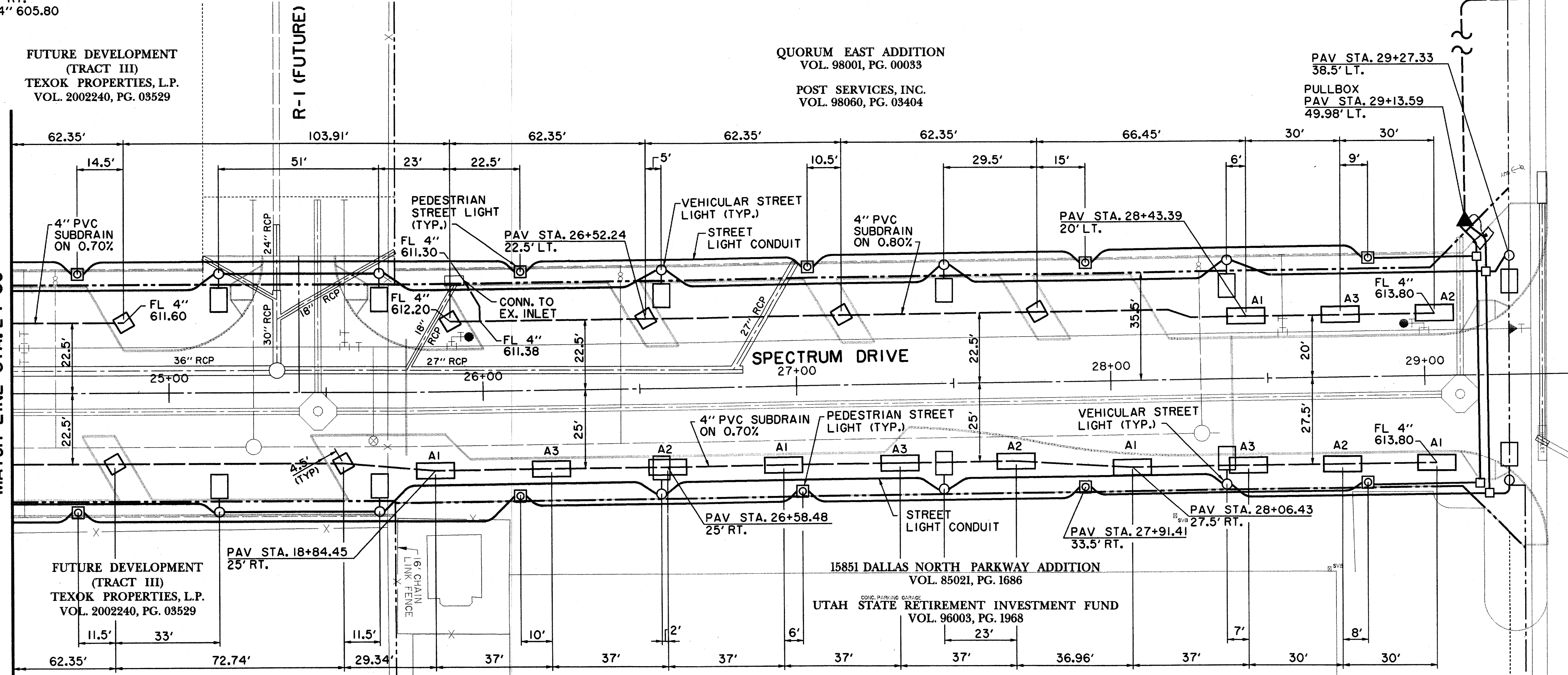
FUTURE DEVELOPMENT
(TRACT III)
TEXOK PROPERTIES, L.P.
VOL. 2002240, PG. 03529

MATCH LINE STA. 24+50

FUTURE DEVELOPMENT
(TRACT III)
TEXOK PROPERTIES, L.P.
VOL. 2002240, PG. 03529

QUORUM EAST ADDITION
VOL. 98001, PG. 00083
POST SERVICES, INC.
VOL. 98060, PG. 03404

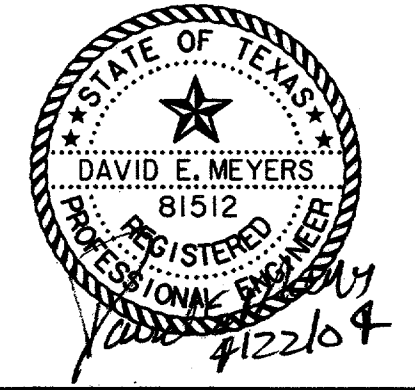
PAV STA. 29+27.33
38.5' LT.
PULLBOX
PAV STA. 29+13.59
49.98' LT.



MATCH LINE STA. 24+50

AIRPORT PARKWAY

BENCHMARKS:
 '□' CUT SOUTHWEST CORNER OF CURB INLET, WEST SIDE OF SPECTRUM DRIVE, ±30' NORTH OF MORRIS AVENUE. ELEV. 611.84
 '□' CUT ON TOP EAST END OF CURB INLET ON NORTH SIDE OF MORRIS AVENUE AND ±150' EAST OF QUORUM DRIVE CENTERLINE. ELEV. 616.39



DATE	DESCRIPTION	REF NO.
4/22/04	DELETED 22 PEDESTRIAN POLES/FOUNDATIONS	
3/04/04	REVISED ALL PEDESTRIAN & STREET LIGHTING	
1/05/04	ISSUED FOR CONSTRUCTION	
11/07/03	ISSUED FOR BID	

STREETScape PLAN						
SPECTRUM DRIVE EXTENSION						
TOWN OF ADDISON, TEXAS						
<small>HUII - 2010rs, Inc. 3131 McKinney Ave., Suite 600, Dallas, TX 75204 Phone (214) 871-3311/Fax (214) 871-0757</small>						
DESIGN	DRAWN	APPR.	SCALE	DATE	PROJECT NO.	NO.
HZI	HZI	DEM	1"=20'	NOV 2003	01-3220-01	11