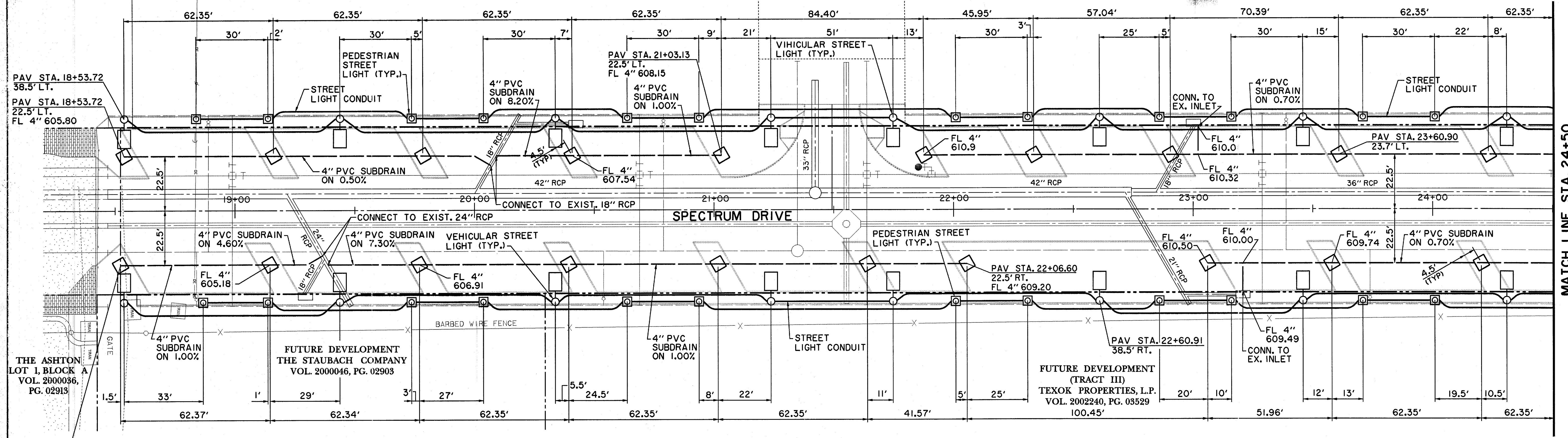


ADDISON CIRCLE
PHASE II
LOT 1, BLOCK D
VOL. 2000153, PG. 00015

FUTURE DEVELOPMENT
(TRACT III)
TEXOK PROPERTIES, L.P.
VOL. 2002240, PG. 03529

FUTURE DEVELOPMENT
(TRACT III)
TEXOK PROPERTIES, L.P.
VOL. 2002240, PG. 03529

R-2 (FUTURE)



MATCH LINE STA. 24+50

THE ASHTON
LOT 1, BLOCK A
VOL. 2000036,
PG. 02913

FUTURE DEVELOPMENT
THE STAUBACH COMPANY
VOL. 2000046, PG. 02903

FUTURE DEVELOPMENT
(TRACT III)
TEXOK PROPERTIES, L.P.
VOL. 2002240, PG. 03529

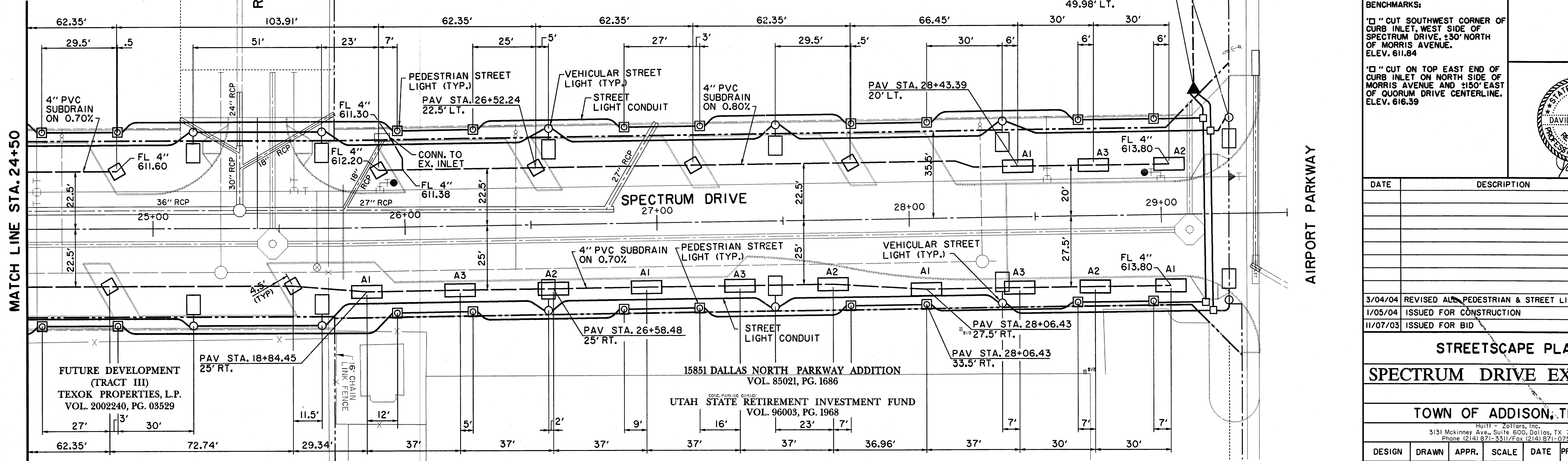
PAV STA. 18+52.27
22.5' RT.
FL 4" 605.80

FUTURE DEVELOPMENT
(TRACT III)
TEXOK PROPERTIES, L.P.
VOL. 2002240, PG. 03529

QUORUM EAST ADDITION
VOL. 98001, PG. 00033
POST SERVICES, INC.
VOL. 98060, PG. 03404

PAV STA. 29+27.33
38.5' LT.
PULLBOX
PAV STA. 29+13.59
49.98' LT.

R-1 (FUTURE)



MATCH LINE STA. 24+50

AIRPORT PARKWAY

FUTURE DEVELOPMENT
(TRACT III)
TEXOK PROPERTIES, L.P.
VOL. 2002240, PG. 03529

15851 DALLAS NORTH PARKWAY ADDITION
VOL. 85021, PG. 1686
UTAH STATE RETIREMENT INVESTMENT FUND
VOL. 96003, PG. 1968

BENCHMARKS:
"1" CUT SOUTHWEST CORNER OF CURB INLET, WEST SIDE OF SPECTRUM DRIVE, ±30' NORTH OF MORRIS AVENUE. ELEV. 611.84
"1" CUT ON TOP EAST END OF CURB INLET ON NORTH SIDE OF MORRIS AVENUE AND ±150' EAST OF QUORUM DRIVE CENTERLINE. ELEV. 616.39



DATE	DESCRIPTION	REF. NO.
3/04/04	REVISED ALL PEDESTRIAN & STREET LIGHTING	
1/05/04	ISSUED FOR CONSTRUCTION	
11/07/03	ISSUED FOR BID	

STREETSCAPE PLAN
SPECTRUM DRIVE EXTENSION

TOWN OF ADDISON, TEXAS

3131 McKinney Ave., Suite 600, Dallas, TX 75204
Phone (214) 871-3311/Fax (214) 871-0757

DESIGN	DRAWN	APPR.	SCALE	DATE	PROJECT NO.	NO.
HZI	HZI	DEM	1"=20'	NOV 2003	01-3220-01	11

PPF ROTATION: 0.000000
 P1: 1/16/2004 10:00:00 AM
 P2: 1/16/2004 10:00:00 AM
 P3: 1/16/2004 10:00:00 AM
 P4: 1/16/2004 10:00:00 AM
 P5: 1/16/2004 10:00:00 AM
 P6: 1/16/2004 10:00:00 AM
 P7: 1/16/2004 10:00:00 AM
 P8: 1/16/2004 10:00:00 AM
 P9: 1/16/2004 10:00:00 AM
 P10: 1/16/2004 10:00:00 AM
 P11: 1/16/2004 10:00:00 AM
 P12: 1/16/2004 10:00:00 AM
 P13: 1/16/2004 10:00:00 AM
 P14: 1/16/2004 10:00:00 AM
 P15: 1/16/2004 10:00:00 AM
 P16: 1/16/2004 10:00:00 AM
 P17: 1/16/2004 10:00:00 AM
 P18: 1/16/2004 10:00:00 AM
 P19: 1/16/2004 10:00:00 AM
 P20: 1/16/2004 10:00:00 AM
 P21: 1/16/2004 10:00:00 AM
 P22: 1/16/2004 10:00:00 AM
 P23: 1/16/2004 10:00:00 AM
 P24: 1/16/2004 10:00:00 AM
 P25: 1/16/2004 10:00:00 AM
 P26: 1/16/2004 10:00:00 AM
 P27: 1/16/2004 10:00:00 AM
 P28: 1/16/2004 10:00:00 AM
 P29: 1/16/2004 10:00:00 AM
 P30: 1/16/2004 10:00:00 AM
 P31: 1/16/2004 10:00:00 AM
 P32: 1/16/2004 10:00:00 AM
 P33: 1/16/2004 10:00:00 AM
 P34: 1/16/2004 10:00:00 AM
 P35: 1/16/2004 10:00:00 AM
 P36: 1/16/2004 10:00:00 AM
 P37: 1/16/2004 10:00:00 AM
 P38: 1/16/2004 10:00:00 AM
 P39: 1/16/2004 10:00:00 AM
 P40: 1/16/2004 10:00:00 AM
 P41: 1/16/2004 10:00:00 AM
 P42: 1/16/2004 10:00:00 AM
 P43: 1/16/2004 10:00:00 AM
 P44: 1/16/2004 10:00:00 AM
 P45: 1/16/2004 10:00:00 AM
 P46: 1/16/2004 10:00:00 AM
 P47: 1/16/2004 10:00:00 AM
 P48: 1/16/2004 10:00:00 AM
 P49: 1/16/2004 10:00:00 AM
 P50: 1/16/2004 10:00:00 AM
 P51: 1/16/2004 10:00:00 AM
 P52: 1/16/2004 10:00:00 AM
 P53: 1/16/2004 10:00:00 AM
 P54: 1/16/2004 10:00:00 AM
 P55: 1/16/2004 10:00:00 AM
 P56: 1/16/2004 10:00:00 AM
 P57: 1/16/2004 10:00:00 AM
 P58: 1/16/2004 10:00:00 AM
 P59: 1/16/2004 10:00:00 AM
 P60: 1/16/2004 10:00:00 AM
 P61: 1/16/2004 10:00:00 AM
 P62: 1/16/2004 10:00:00 AM
 P63: 1/16/2004 10:00:00 AM
 P64: 1/16/2004 10:00:00 AM
 P65: 1/16/2004 10:00:00 AM
 P66: 1/16/2004 10:00:00 AM
 P67: 1/16/2004 10:00:00 AM
 P68: 1/16/2004 10:00:00 AM
 P69: 1/16/2004 10:00:00 AM
 P70: 1/16/2004 10:00:00 AM
 P71: 1/16/2004 10:00:00 AM
 P72: 1/16/2004 10:00:00 AM
 P73: 1/16/2004 10:00:00 AM
 P74: 1/16/2004 10:00:00 AM
 P75: 1/16/2004 10:00:00 AM
 P76: 1/16/2004 10:00:00 AM
 P77: 1/16/2004 10:00:00 AM
 P78: 1/16/2004 10:00:00 AM
 P79: 1/16/2004 10:00:00 AM
 P80: 1/16/2004 10:00:00 AM
 P81: 1/16/2004 10:00:00 AM
 P82: 1/16/2004 10:00:00 AM
 P83: 1/16/2004 10:00:00 AM
 P84: 1/16/2004 10:00:00 AM
 P85: 1/16/2004 10:00:00 AM
 P86: 1/16/2004 10:00:00 AM
 P87: 1/16/2004 10:00:00 AM
 P88: 1/16/2004 10:00:00 AM
 P89: 1/16/2004 10:00:00 AM
 P90: 1/16/2004 10:00:00 AM
 P91: 1/16/2004 10:00:00 AM
 P92: 1/16/2004 10:00:00 AM
 P93: 1/16/2004 10:00:00 AM
 P94: 1/16/2004 10:00:00 AM
 P95: 1/16/2004 10:00:00 AM
 P96: 1/16/2004 10:00:00 AM
 P97: 1/16/2004 10:00:00 AM
 P98: 1/16/2004 10:00:00 AM
 P99: 1/16/2004 10:00:00 AM
 P100: 1/16/2004 10:00:00 AM