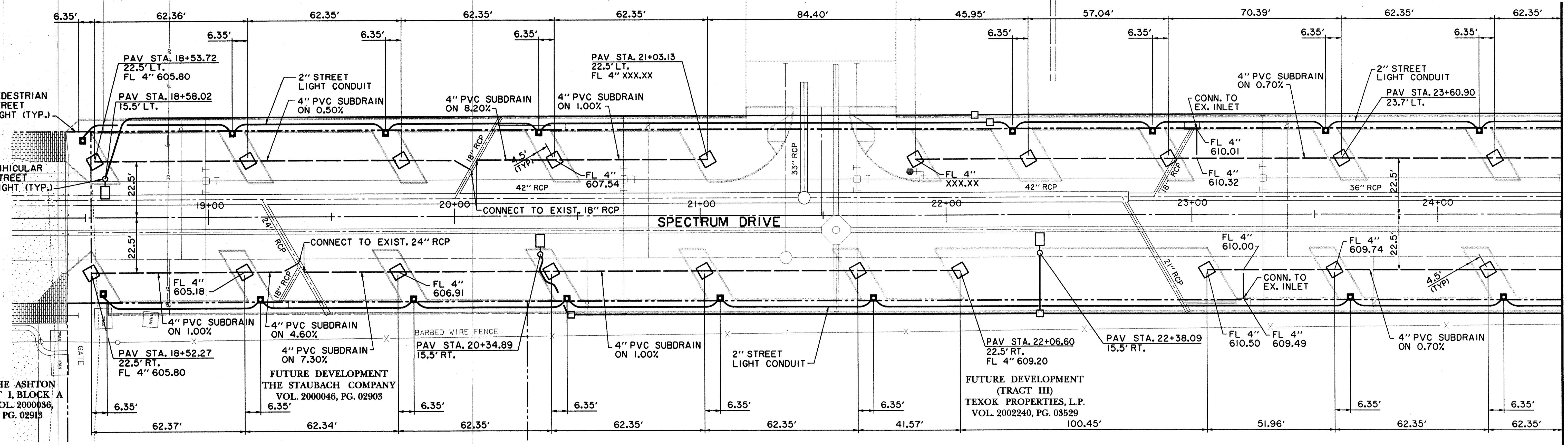


ADDISON CIRCLE
PHASE II
LOT 1, BLOCK D
VOL. 2000153, PG. 00015

FUTURE DEVELOPMENT
(TRACT III)
TEXOK PROPERTIES, L.P.
VOL. 2002240, PG. 03529

FUTURE DEVELOPMENT
(TRACT III)
TEXOK PROPERTIES, L.P.
VOL. 2002240, PG. 03529



THE ASHTON
LOT 1, BLOCK A
VOL. 2000036,
PG. 02913

FUTURE DEVELOPMENT
THE STAUBACH COMPANY
VOL. 2000046, PG. 02903

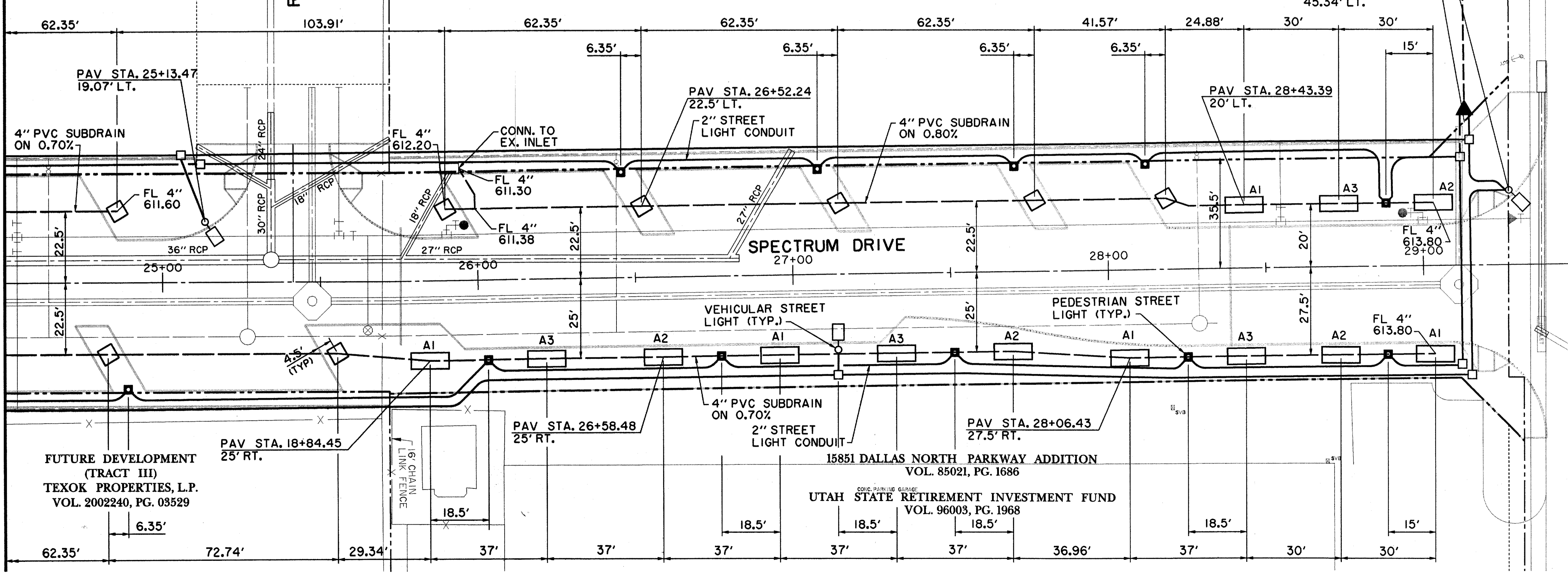
FUTURE DEVELOPMENT
(TRACT III)
TEXOK PROPERTIES, L.P.
VOL. 2002240, PG. 03529

MATCH LINE STA. 24+50

FUTURE DEVELOPMENT
(TRACT III)
TEXOK PROPERTIES, L.P.
VOL. 2002240, PG. 03529

QUORUM EAST ADDITION
VOL. 98001, PG. 00033
POST SERVICES, INC.
VOL. 98060, PG. 03404

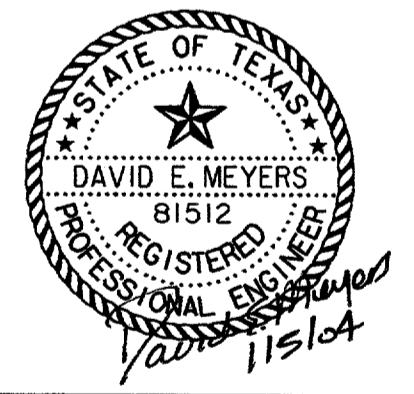
PAV STA. 29+27.33
23.72' LT.
PULLBOX
PAV STA. 29+13.59
45.34' LT.



MATCH LINE STA. 24+50

AIRPORT PARKWAY

BENCHMARKS:
 '□' CUT SOUTHWEST CORNER OF CURB INLET, WEST SIDE OF SPECTRUM DRIVE, ±30' NORTH OF MORRIS AVENUE. ELEV. 611.84
 '□' CUT ON TOP EAST END OF CURB INLET ON NORTH SIDE OF MORRIS AVENUE AND ±150' EAST OF QUORUM DRIVE CENTERLINE. ELEV. 616.39



DATE	DESCRIPTION	REF. NO.
1/05/04	ISSUED FOR CONSTRUCTION	
11/07/03	ISSUED FOR BID	

**STREETSCAPE PLAN
SPECTRUM DRIVE EXTENSION**

TOWN OF ADDISON, TEXAS
 HUIF - 2010rs, Inc.
 3131 McKinney Ave., Suite 900, Dallas, TX 75204
 Phone (214) 871-3311/Fax (214) 871-0757

DESIGN	DRAWN	APPR.	SCALE	DATE	PROJECT NO.	NO.
HZI	HZI	DEM	1"=20'	NOV 2003	01-3220-01	11

11/05/04 11:52:00 AM H:\PROJECTS\2003\01-3220\01-3220-01\DWG\01-3220-01-11.DWG
 PLOT DATE: 11/05/04 11:52:00 AM
 PLOT TIME: 11/05/04 11:52:00 AM
 PLOT USER: HZI
 PLOT DEVICE: HPGLA2
 PLOT SCALE: 1"=20'
 PLOT SHEET: 11
 PLOT TOTAL SHEETS: 11
 PLOT STATUS: SUCCESS
 PLOT MESSAGE: