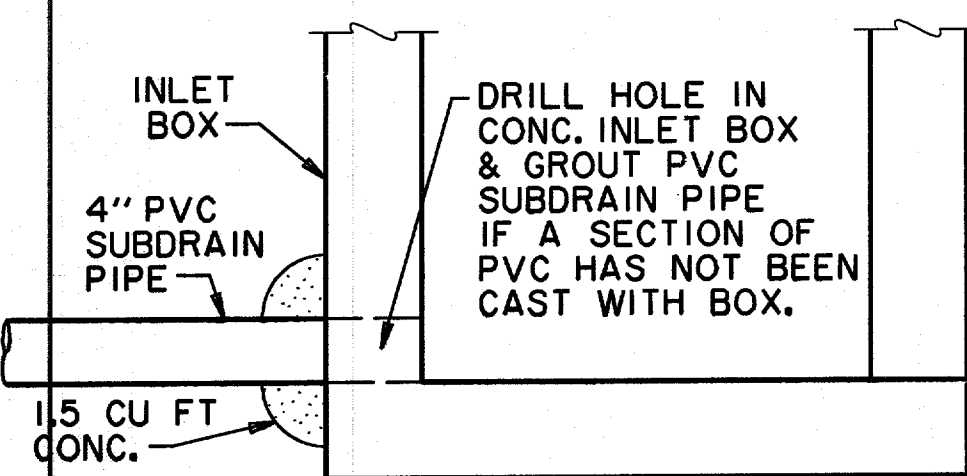
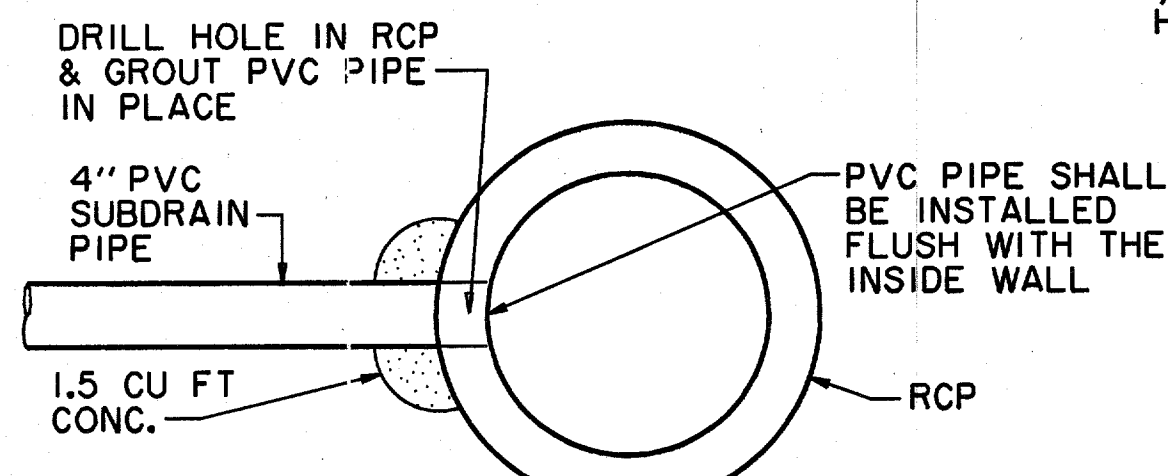


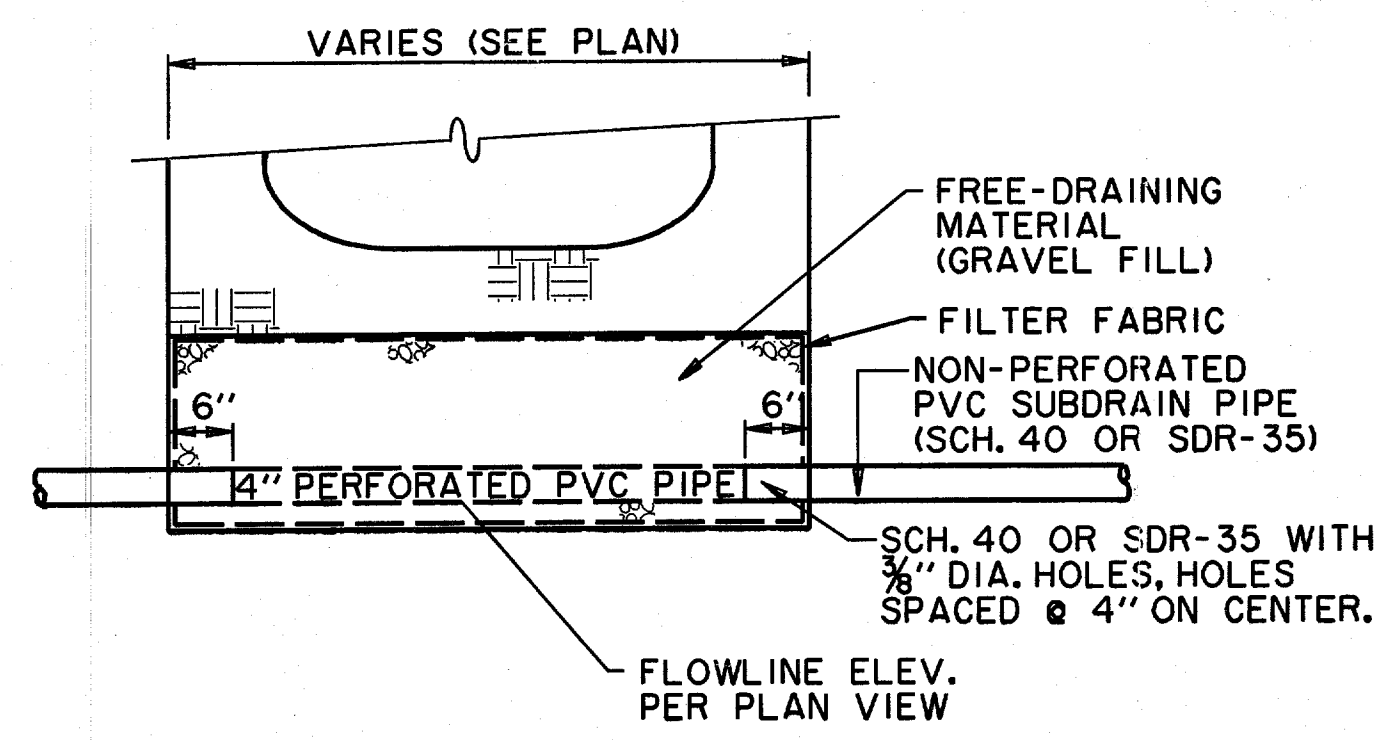
**SUBSURFACE DRAIN SYSTEM DETAIL**  
(SECTION PERPENDICULAR TO CURB)  
N.T.S.  
(TO BE USED ON ALL TREES UNLESS OTHERWISE NOTED)



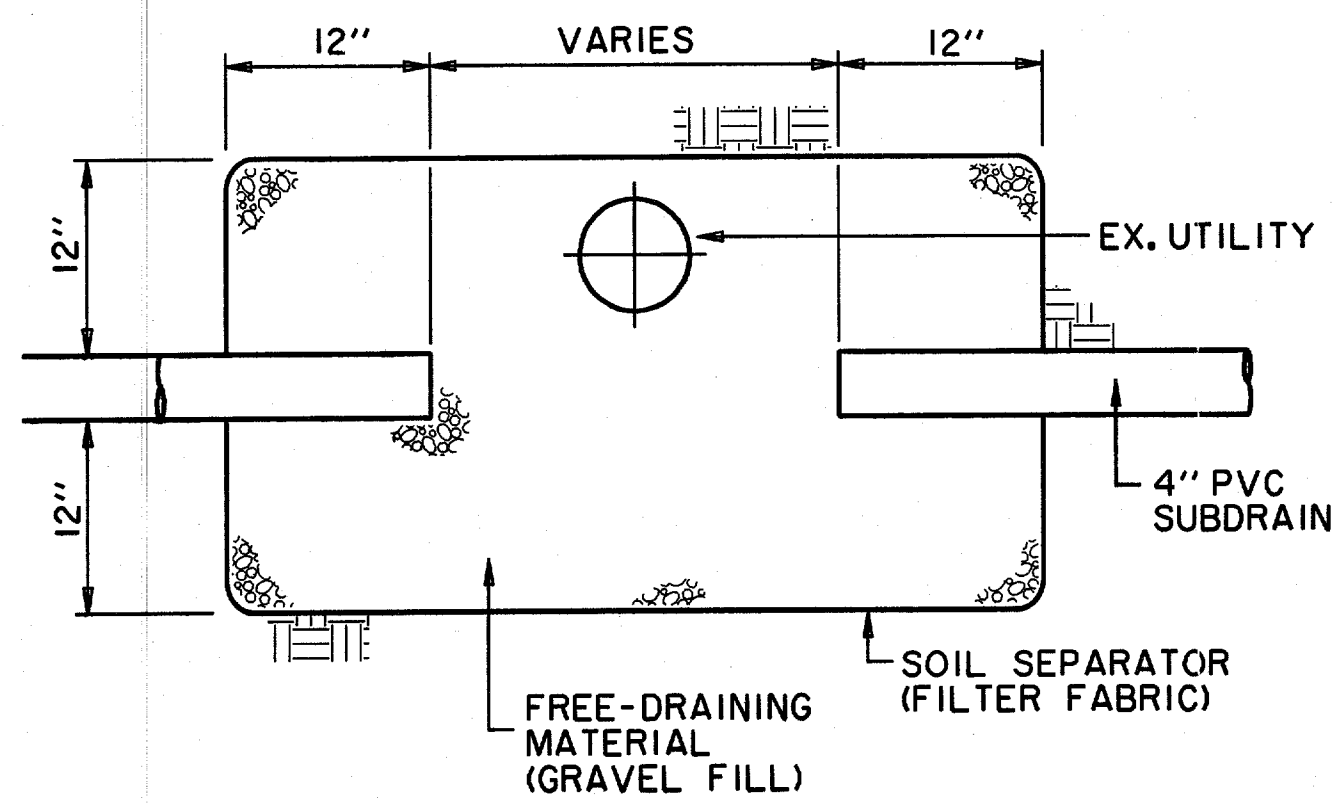
**PVC SUBDRAIN PIPE CONNECTION TO INLET BOX**  
N.T.S.



**PVC SUBDRAIN PIPE CONNECTION TO STORM DRAINAGE PIPE**  
N.T.S.

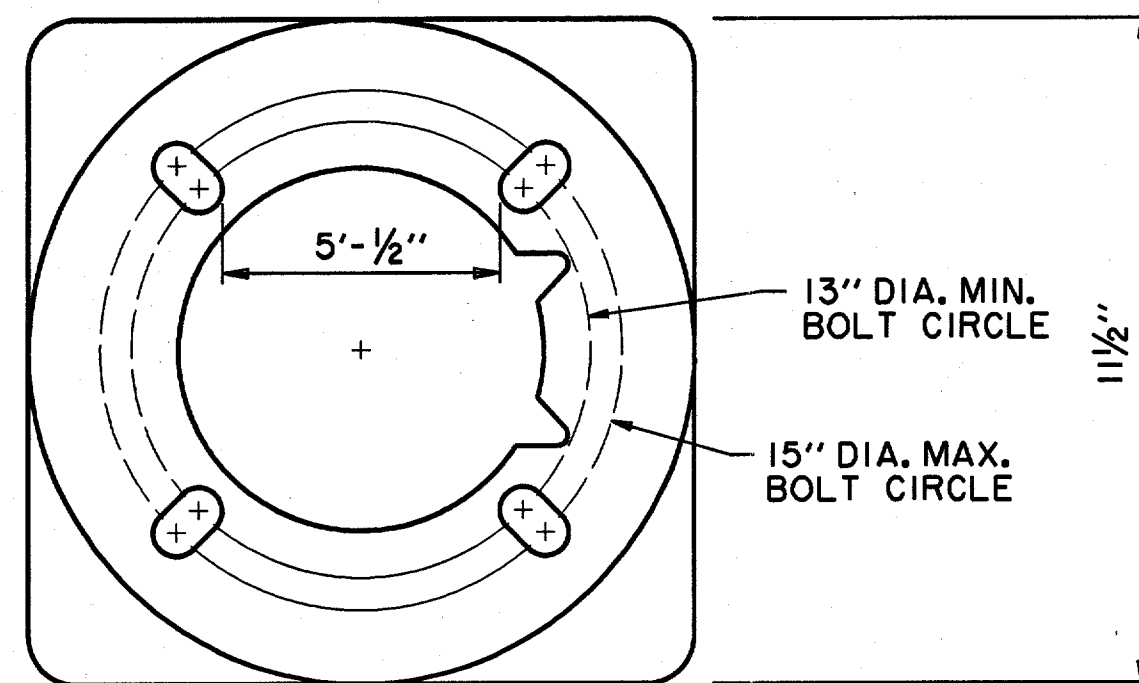


**SUBSURFACE DRAIN SYSTEM DETAIL**  
(SECTION PARALLEL TO CURB)  
N.T.S.



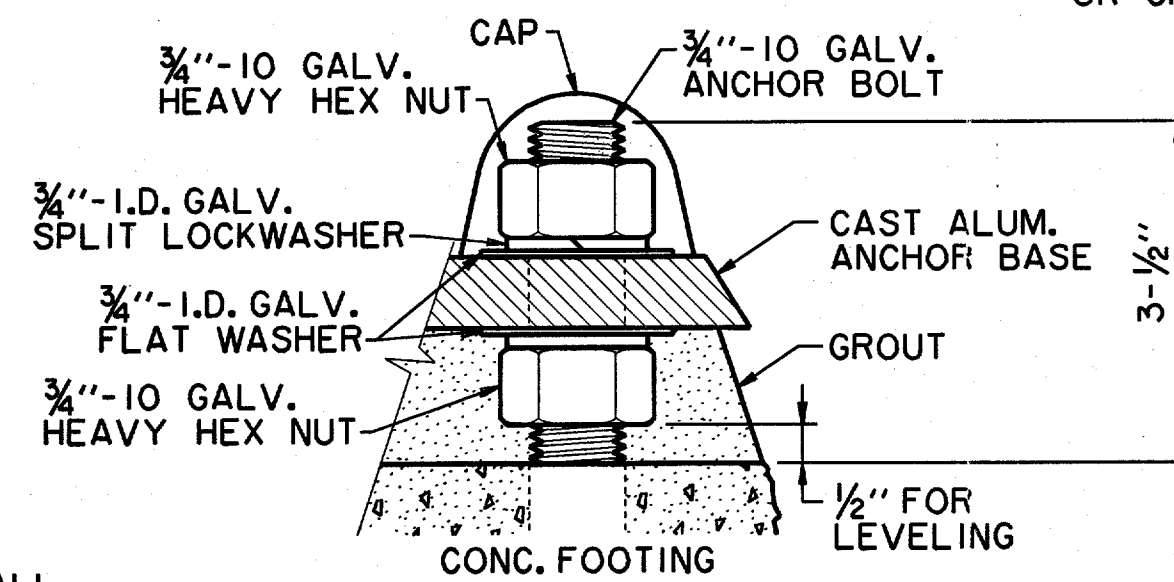
**INSTALLATION OF SUBDRAIN AT UTILITY CONFLICT**  
N.T.S.

USE CAUTION WHEN SETTING ANCHOR BOLTS. BOLTS MUST BE VERT. STRAIGHT & CENTERED ON DIMENSIONS SHOWN.

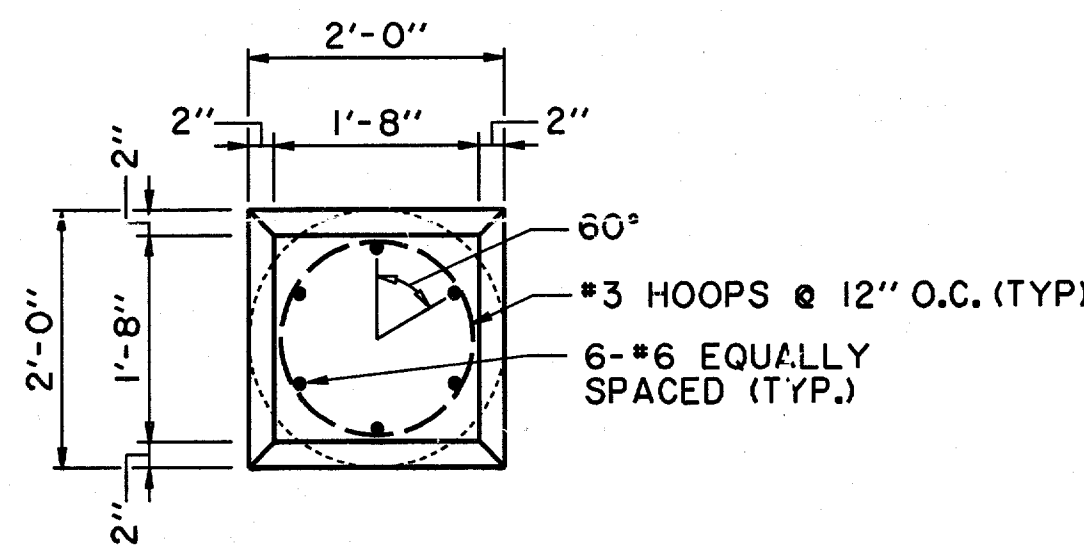


**BASE ANCHOR PLATE (PEDESTRIAN POLE)**  
N.T.S.

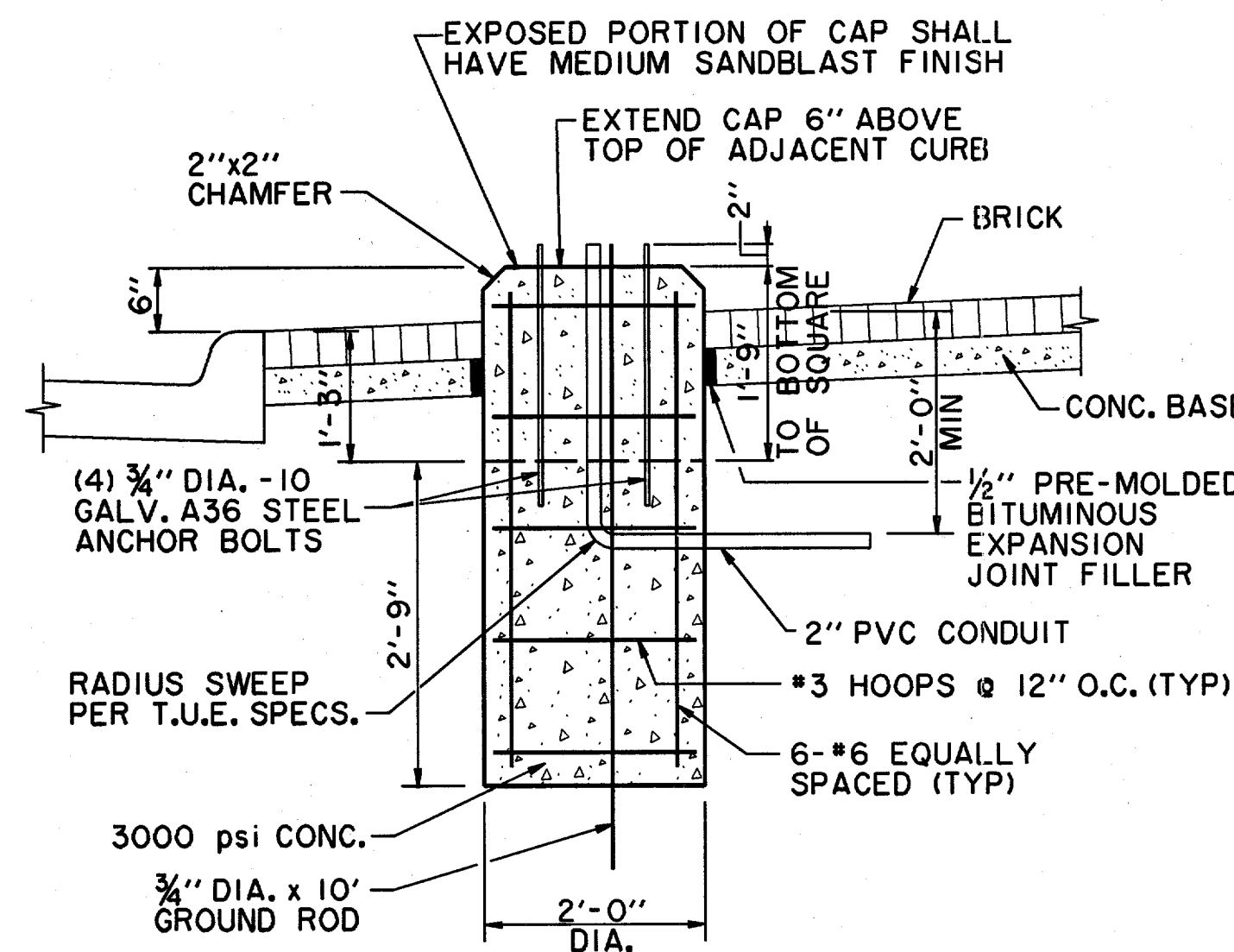
NOTE:  
ADEQUATE DRAINAGE MUST BE PROVIDED IN CONC. FOUNDATION OR GROUT.



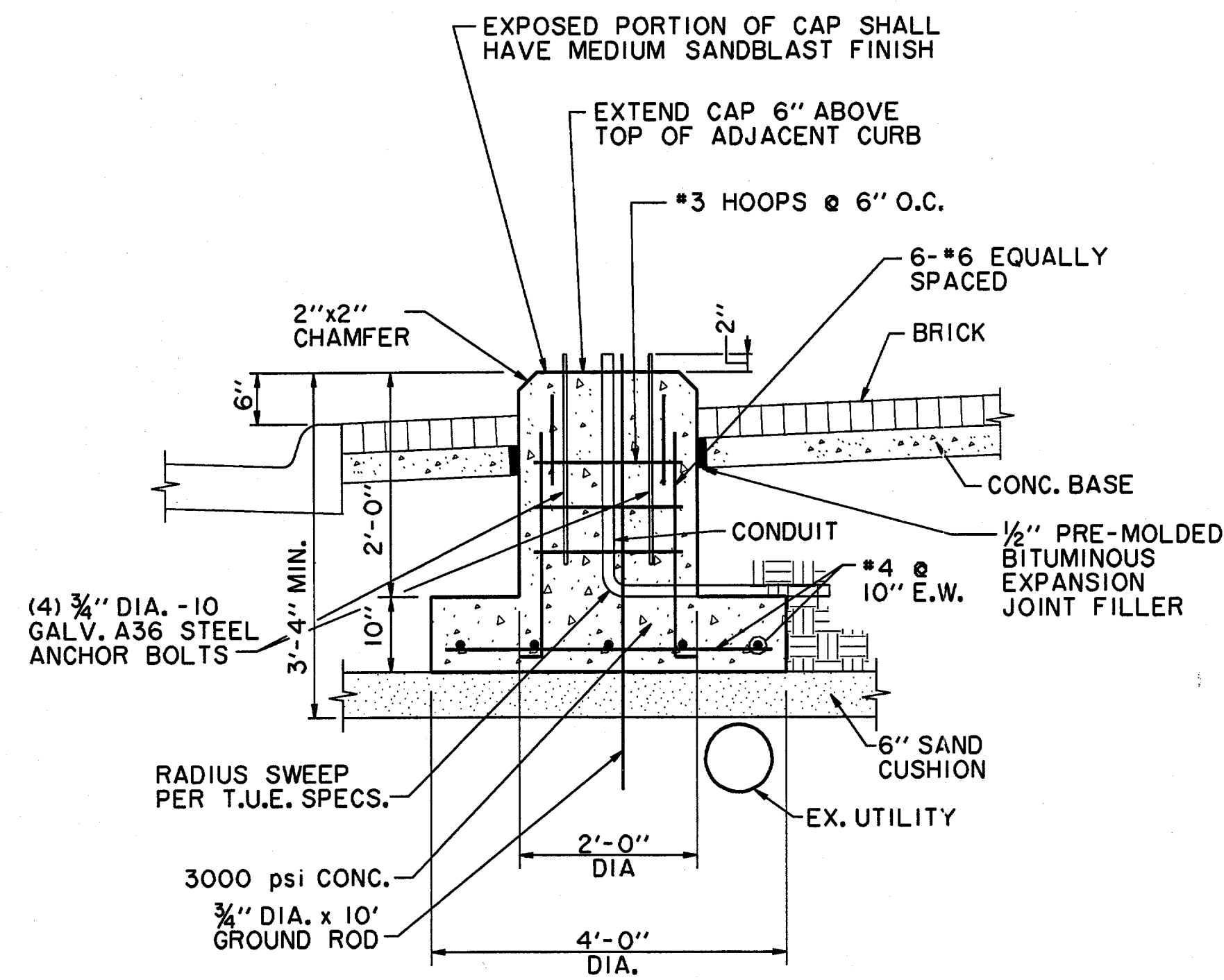
**BOLT PROJECTION DETAIL (PEDESTRIAN)**  
N.T.S.



**LIGHT FIXTURE FOUNDATION AND CAP PLAN (PEDESTRIAN AND VEEHICULAR POLE)**  
N.T.S.



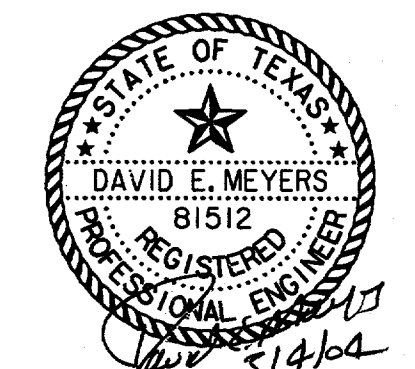
**PEDESTRIAN LIGHT FIXTURE FOUNDATION AND CAP SECTION**  
N.T.S.



**ALTERNATE PEDESTRIAN LIGHT FIXTURE FOOTING AT UTILITY CONFLICT**  
N.T.S.  
(NOT TO BE USED FOR HANGING LIGHT FOUNDATION)

**STREET LIGHTING NOTES**

1. THE PEDESTRIAN STREET LIGHTING FOR THIS PROJECT WILL CONSIST OF INSTALLATION OF 2" PVC CONDUIT, LIGHT POLE BASES, PULL BOXES (HANDHOLES) LIGHT POLES, LUMINAIRES, WIRING & CONNECTION TO POWER SOURCE AS A COMPLETE SYSTEM PER DETAILED SPECIFICATIONS.
2. ALL STREET LIGHTING CONDUIT IS TO BE INSTALLED WITH A MIN. OF 24 INCHES OF COVER TO THE TOP OF THE PIPE FROM FINISHED PVMT. TO AVOID CONFLICT WITH IRRIGATION LINES WHICH WILL BE @ 12" & 18" DEPTH. CONDUIT SHOULD BE NO DEEPER THAN 36" TO AVOID CONFLICT WITH OTHER UTILITIES.
3. FOR THE PURPOSES OF COORDINATION, PEDESTRIAN AND VEHICULAR LIGHTS TO BE INSTALLED PER THE STREETSCAPE PLANS FOR THIS PROJECT WILL BE PER THE TOWN OF ADDISON LIGHTING MASTER PLAN SPECIFICATIONS.
4. LOCATIONS OF ANY STREET LIGHTS MAY NOT BE ALTERED WITHOUT PERMISSION FROM THE ENGINEER.
5. THE LETTER "C" SHALL BE STAMPED OR CHISELED ON CURB AT ALL LOCATIONS OF CONDUIT UNDER STREETS, DRIVES AND INTERSECTIONS.
6. SEE SPECIFICATIONS FOR VEHICULAR POLE, FOUNDATION, MOUNTING HARDWARE ETC... PER THE "TOWN OF ADDISON LIGHTING MASTER PLAN".



DATE	DESCRIPTION	REF. NO.
3/04/04	REVISED ALL PEDESTRIAN & STREET LIGHTING	
1/05/04	ISSUED FOR CONSTRUCTION	
11/07/03	ISSUED FOR BID	

STREETSCAPE DETAILS						
SPECTRUM DRIVE EXTENSION						
TOWN OF ADDISON, TEXAS						
<small>Hull - Zolters, Inc. 3131 McKinney Ave., Suite 600, Dallas, TX 75204 Phone (214) 871-3311/Fax (214) 871-0757</small>						
DESIGN	DRAWN	APPR.	SCALE	DATE	PROJECT NO.	NO.
HZI	HZI	DEM	N.T.S.	NOV 2003	01-3220-01	13