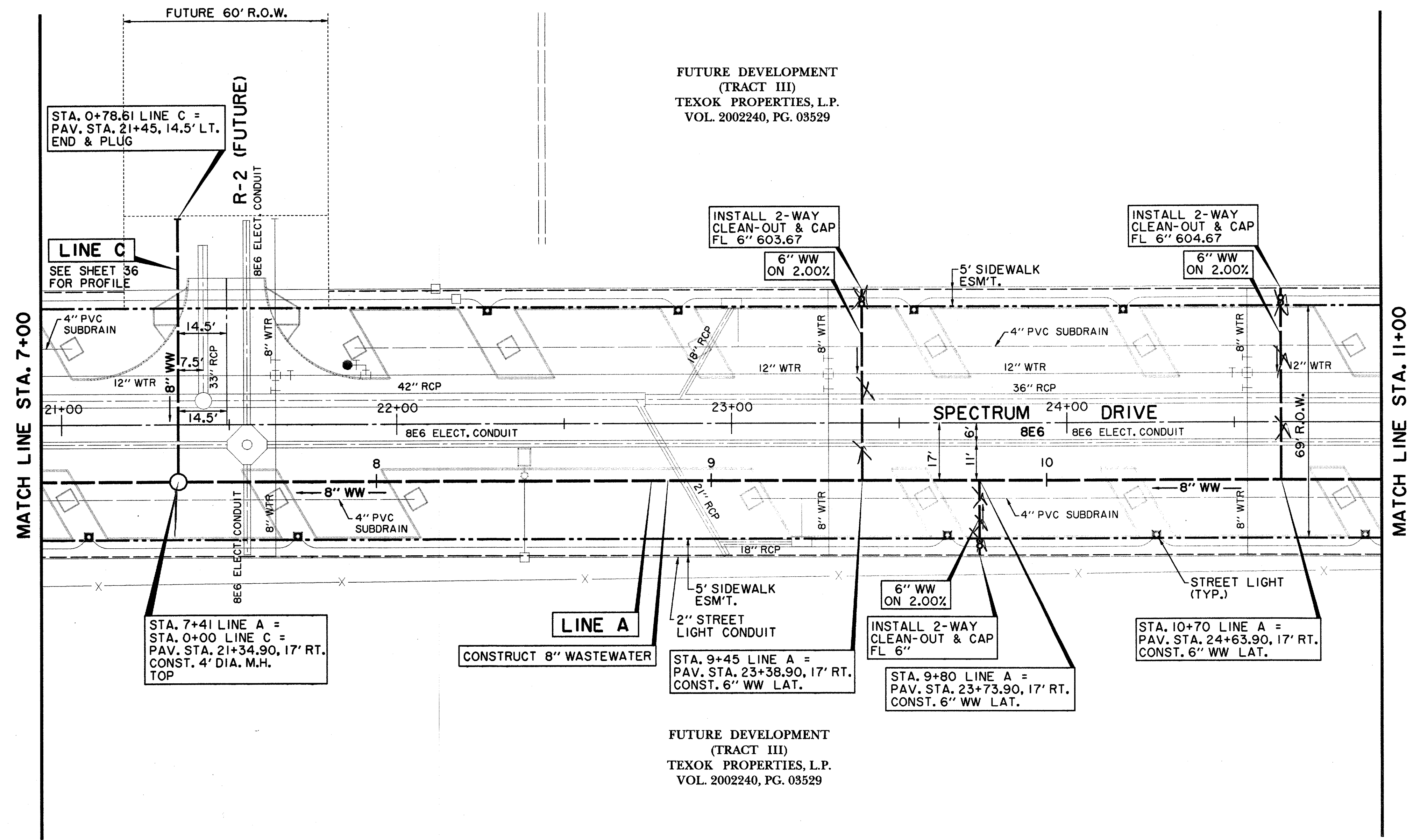


FUTURE DEVELOPMENT
(TRACT III)
TEXOK PROPERTIES, L.P.
VOL. 2002240, PG. 03529

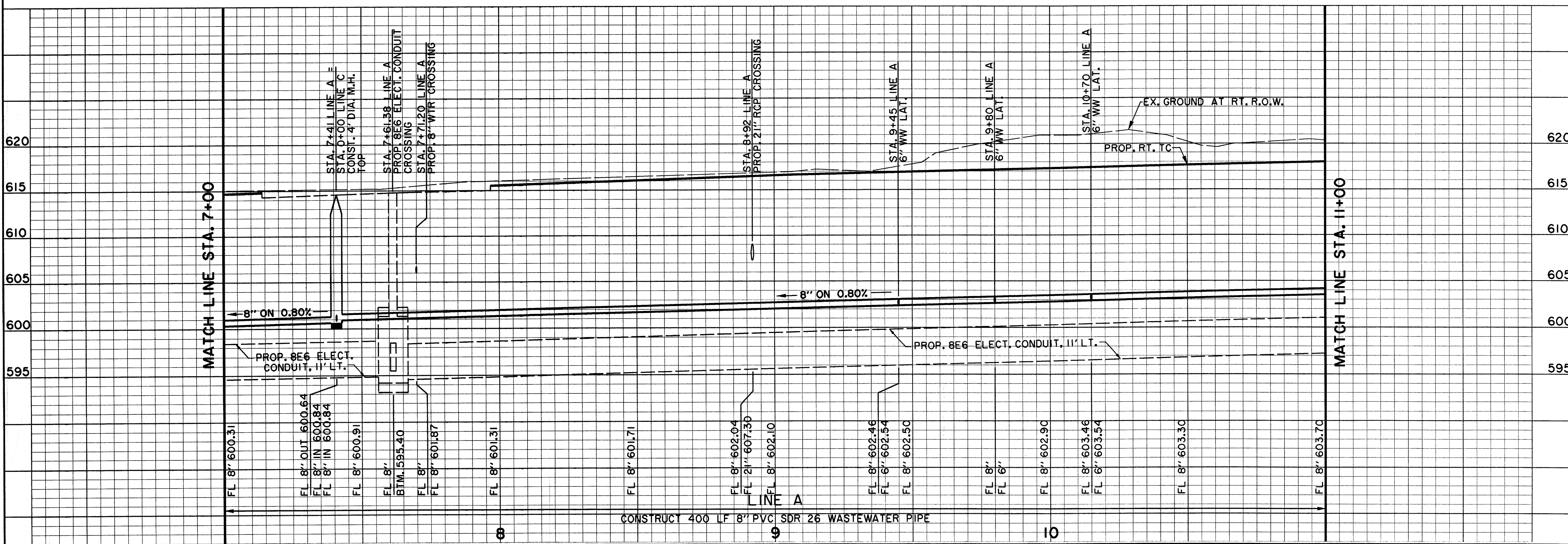


3-6" service laterals.

FUTURE DEVELOPMENT
(TRACT III)
TEXOK PROPERTIES, L.P.
VOL. 2002240, PG. 03529

P:\PROJECTS\2002\240\DWG\322001US02.dwg
 11/15/04 10:52:01 AM
 322001US02.dwg
 11/15/04 10:52:01 AM

P:\PROJECTS\2002\240\DWG\322001US02.dwg
 11/15/04 10:52:01 AM
 322001US02.dwg
 11/15/04 10:52:01 AM



BENCHMARKS:						
"□" CUT SOUTHWEST CORNER OF CURB INLET, WEST SIDE OF SPECTRUM DRIVE, ±30' NORTH OF MORRIS AVENUE. ELEV. 611.84 "□" CUT ON TOP EAST END OF CURB INLET ON NORTH SIDE OF MORRIS AVENUE AND ±150' EAST OF QUORUM DRIVE CENTERLINE. ELEV. 616.39						
DATE	DESCRIPTION	REF. NO.				
1/05/04	ISSUED FOR CONSTRUCTION					
11/07/03	ISSUED FOR BID					
WASTEWATER PLAN & PROFILE						
LINE A						
SPECTRUM DRIVE EXTENSION						
TOWN OF ADDISON, TEXAS						
3131 McKinney Ave., Suite 600, Dallas, TX 75204 Phone (214) 871-3311/Fax (214) 871-0757						
DESIGN	DRAWN	APPR.	SCALE	DATE	PROJECT NO.	NO.
HZI	HZI	DEM	H: 1"=20' V: 1"=6'	NOV 2003	01-3220-01	37

