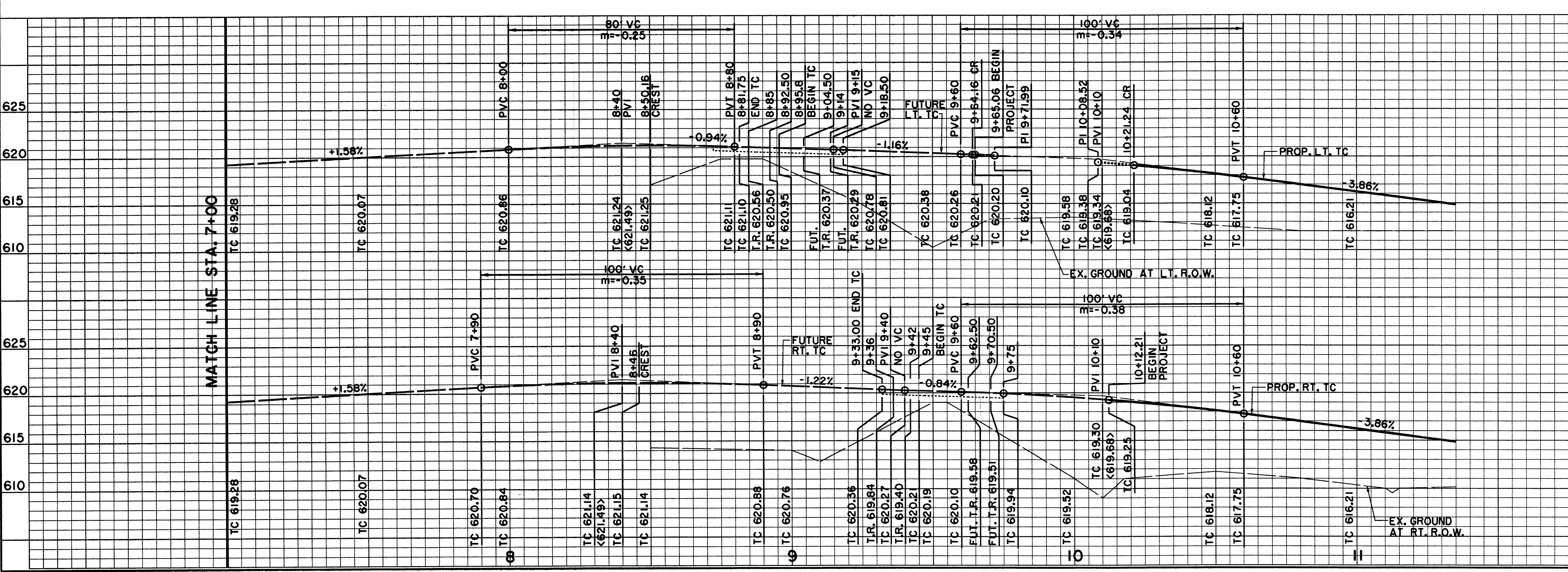


P:\PROJECTS\2003\ADDISON\ADDISON.DWG
 DATE: 11/16/03
 DRAWN BY: HZI
 CHECKED BY: DEM
 PROJECT NO.: 01-3220-01

HULL - ZOLLERS, INC.
 3131 MCKINNEY AVE., SUITE 600, DALLAS, TX 75204
 PHONE: (214) 871-3311 / FAX: (214) 871-0757
 WWW.HULL-ZOLLERS.COM



BENCHMARKS:	
625	'I' CUT SOUTHWEST CORNER OF CURB INLET, WEST SIDE OF SPECTRUM DRIVE, ±30' NORTH OF MORRIS AVENUE. ELEV. 611.84
620	'X' CUT ON CONC. TOP OF CURB OF MEDIAN NOSE ON SPECTRUM DRIVE AT INTERSECTION OF MCENTIRE PLACE. ELEV. 619.30
615	
610	
625	1/05/04 ISSUED FOR CONSTRUCTION
620	12/16/03 REVISED ASPHALT TRANSITION LIMITS 11/20/03 ADDENDUM NO. 1 11/07/03 ISSUED FOR BID
PAVING PLAN & PROFILE SPECTRUM DRIVE STA. 7+00 TO STA. 11+00 SPECTRUM DRIVE EXTENSION	
TOWN OF ADDISON, TEXAS	
<small>Hull - Zollers, Inc. 3131 McKinney Ave., Suite 600, Dallas, TX 75204 Phone: (214) 871-3311 / Fax: (214) 871-0757</small>	
DESIGN	HZI
DRAWN	HZI
APPR.	DEM
SCALE	H _v 1"=20' V _v 1"=6'
DATE	NOV 2003
PROJECT NO.	01-3220-01
NO.	5

