

ADDISON CIRCLE
PHASE II
LOT 1, BLOCK D
VOL. 2000153, PG. 00015

FUTURE DEVELOPMENT
(TRACT III)
TEXOK PROPERTIES, L.P.
VOL. 2002240, PG. 03529

FUTURE DEVELOPMENT
(TRACT III)
TEXOK PROPERTIES, L.P.
VOL. 2002240, PG. 03529

QUORUM EAST ADDITION
VOL. 98001, PG. 00033
POST SERVICES, INC.
VOL. 98060, PG. 03404

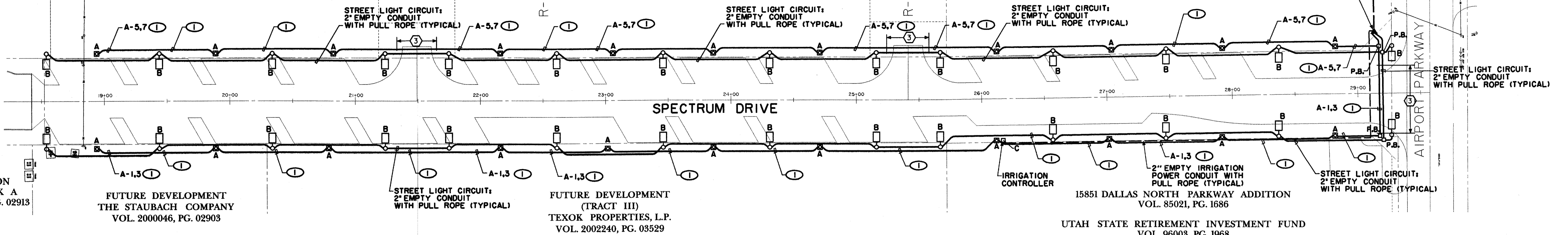
ONCOR ELECTRIC
SERVICE UNDERGROUND
FROM POLE TO METER
(2) SERVICE POINT #1
SERVICE METER AND
LIGHTING CONTROL
PANEL "A"

THE ASHTON
LOT 1, BLOCK A
VOL. 2000036, PG. 02913

FUTURE DEVELOPMENT
THE STAUBACH COMPANY
VOL. 2000046, PG. 02903

FUTURE DEVELOPMENT
(TRACT III)
TEXOK PROPERTIES, L.P.
VOL. 2002240, PG. 03529

15851 DALLAS NORTH PARKWAY ADDITION
VOL. 85021, PG. 1686
UTAH STATE RETIREMENT INVESTMENT FUND
VOL. 96003, PG. 1968



NOTES:
REFER TO LANDSCAPE ARCHITECTURAL PLANS FOR
EXACT LIGHT POLE LOCATIONS.
REFER TO NOTES AND DETAILS ON SHEET 55

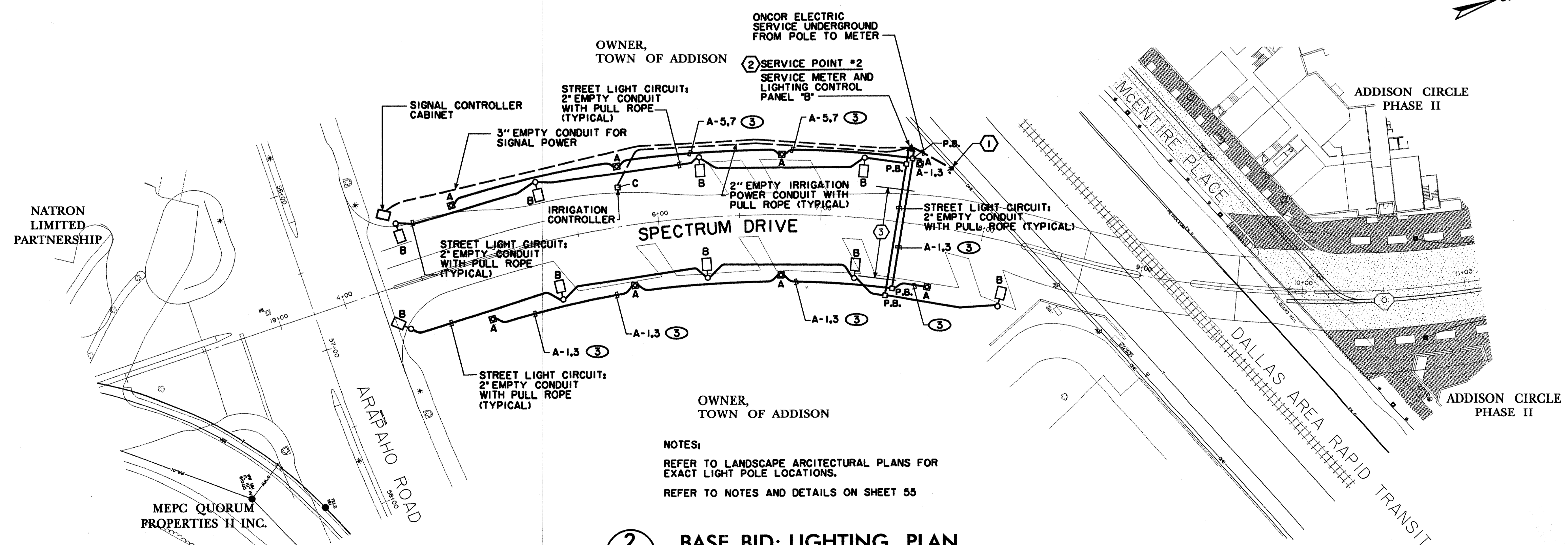
1 BASE BID: LIGHTING PLAN
SCALE: 1"=40'-0"

KEY NOTES	
NUMBER	DESCRIPTION
①	ONCOR ELECTRIC SERVICE POLE WITH AERIAL-TO-UNDERGROUND TRANSITION, PROVIDE WIRE AND CONDUIT TERMINATIONS AS REQUIRED BY ONCOR.
②	PROVIDE NEMA 3R ENCLOSURE TO HOUSE PANELS, LIGHT CONTROLS, METERS ETC. SEE DETAIL 3/55.
③	CONCRETE ENCASE CONDUITS UNDER ROADWAY.

LIGHTING CIRCUIT CONDUCTOR SCHEDULE	
MARK	WIRE AND CONDUIT
①	(2) #4, #8 GROUND - 2" C
②	(2) #6, #8 GROUND - 2" C
③	(2) #8, #8 GROUND - 2" C

P:\PROJECTS\2004000000\DWG\2004000000.dwg
 DATE: 11/07/03 11:31:27 AM
 USER: JLD
 PLOT: 11/07/03 11:31:27 AM
 PLOTTER: HP DesignJet 500

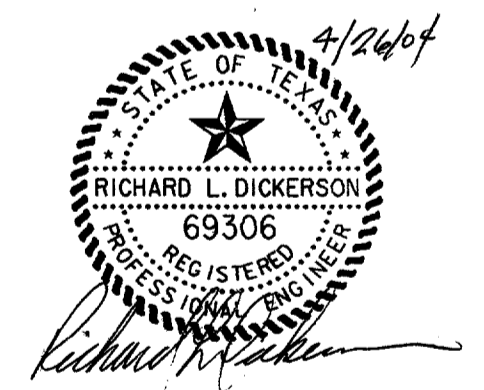
P:\PROJECTS\2004000000\DWG\2004000000.dwg
 DATE: 11/07/03 11:31:27 AM
 USER: JLD
 PLOT: 11/07/03 11:31:27 AM
 PLOTTER: HP DesignJet 500



NOTES:
REFER TO LANDSCAPE ARCHITECTURAL PLANS FOR
EXACT LIGHT POLE LOCATIONS.
REFER TO NOTES AND DETAILS ON SHEET 55

2 BASE BID: LIGHTING PLAN
SCALE: 1"=40'-0"

BENCHMARKS:
 □ " CUT SOUTHWEST CORNER OF CURB INLET, WEST SIDE OF SPECTRUM DRIVE, ±30' NORTH OF MORRIS AVENUE. ELEV. 611.84
 □ " CUT ON TOP EAST END OF CURB INLET ON NORTH SIDE OF MORRIS AVENUE AND ±150' EAST OF QUORUM DRIVE CENTERLINE. ELEV. 616.39
 *X" CUT ON CONC. TOP OF CURB OF MEDIAN NOSE ON SPECTRUM DRIVE AT INTERSECTION OF MCVENTRE PLACE. ELEV. 619.30



DATE	DESCRIPTION	REF. NO.
4/22/04	DELETED 29 PEDESTRIAN POLES/LIGHTS	2
3/02/04	REVISED ALL STREET AND PEDESTRIAN LTG	1
11/07/03	ISSUED FOR BID	

BASE BID STREET LIGHT CONDUIT & POWER PLAN SPECTRUM DRIVE EXTENSION					
TOWN OF ADDISON, TEXAS					
HUII - 2016, Inc. 3131 McKinney Ave., Suite 800, Dallas, TX 75204 Phone: (214) 871-3311 / Fax: (214) 871-0757					
DESIGN	DRAWN	APPR.	SCALE	DATE	PROJECT NO.
HZI	HZI	RLD	1"=40'	NOV 2003	01-3220-01
					54