

ADDISON CIRCLE  
PHASE II  
LOT 1, BLOCK D  
VOL. 2000153, PG. 00015

FUTURE DEVELOPMENT  
(TRACT III)  
TEXOK PROPERTIES, L.P.  
VOL. 2002240, PG. 03529

FUTURE DEVELOPMENT  
(TRACT III)  
TEXOK PROPERTIES, L.P.  
VOL. 2002240, PG. 03529

QUORUM EAST ADDITION  
VOL. 98001, PG. 00033  
POST SERVICES, INC.  
VOL. 98060, PG. 03404

ONCOR ELECTRIC  
SERVICE UNDERGROUND  
FROM POLE TO METER  
② SERVICE POINT #1  
SERVICE METER AND  
LIGHTING CONTROL  
PANEL 'A'

THE ASHTON  
LOT 1, BLOCK A  
VOL. 2000036, PG. 02913

FUTURE DEVELOPMENT  
THE STAUBACH COMPANY  
VOL. 2000046, PG. 02903

STREET LIGHT CIRCUIT:  
2" EMPTY CONDUIT  
WITH PULL ROPE (TYPICAL)

FUTURE DEVELOPMENT  
(TRACT III)  
TEXOK PROPERTIES, L.P.  
VOL. 2002240, PG. 03529

IRRIGATION  
CONTROLLER

15851 DALLAS NORTH PARKWAY ADDITION  
VOL. 85021, PG. 1686

UTAH STATE RETIREMENT INVESTMENT FUND  
VOL. 96003, PG. 1968

STREET LIGHT CIRCUIT:  
2" EMPTY CONDUIT  
WITH PULL ROPE (TYPICAL)

NOTES:  
REFER TO LANDSCAPE ARCHITECTURAL PLANS FOR  
EXACT LIGHT POLE LOCATIONS.  
REFER TO NOTES AND DETAILS ON SHEET 55

KEY NOTES

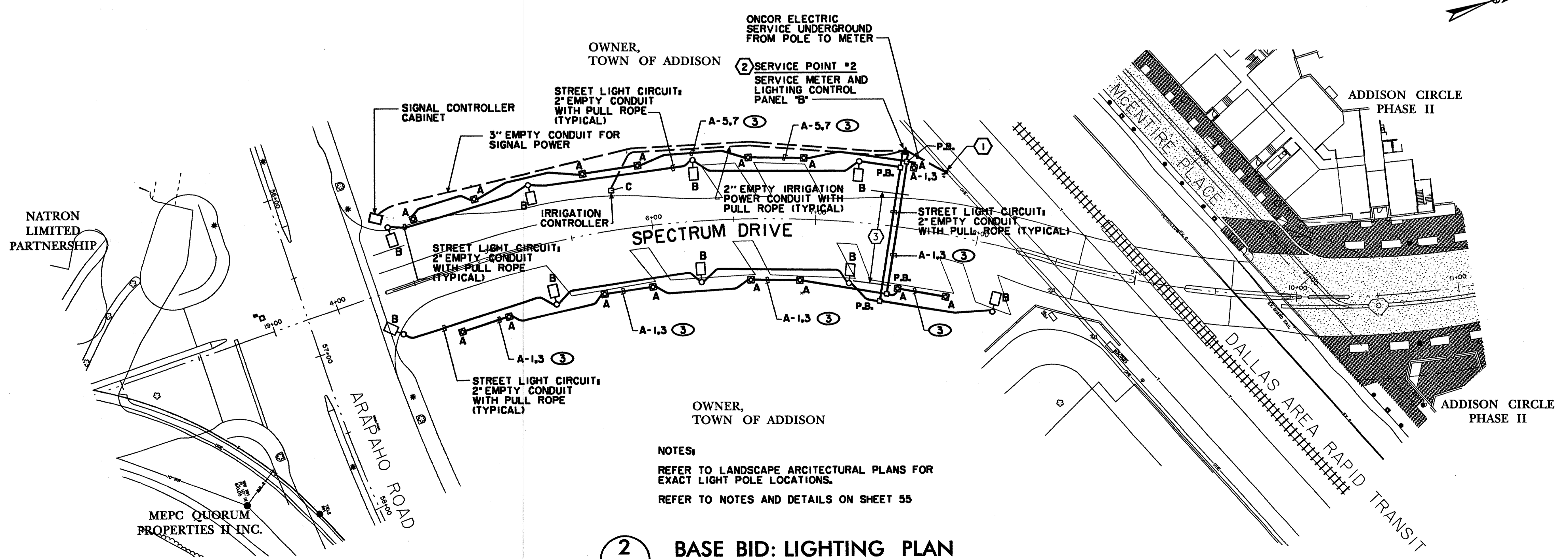
NUMBER	DESCRIPTION
①	ONCOR ELECTRIC SERVICE POLE WITH AERIAL-TO-UNDERGROUND TRANSITION. PROVIDE WIRE AND CONDUIT TERMINATIONS AS REQUIRED BY ONCOR.
②	PROVIDE METER BANK IN NEMA 3R ENCLOSURE. MOUNT ON STEEL CHANNEL FRAME. CONSTRUCT FRAME TO SUPPORT METERS, CONTACTOR PANEL, DISCONNECT SWITCHES, PANELBOARD, TIME SWITCH AND PHOTOCELL. REFER TO DETAILS ON SHEET 55.
③	CONCRETE ENCASE CONDUITS UNDER ROADWAY.

LIGHTING CIRCUIT CONDUCTOR SCHEDULE

MARK	WIRE AND CONDUIT
①	(2) #4, #8 GROUND - 2" C
②	(2) #6, #8 GROUND - 2" C
③	(2) #8, #8 GROUND - 2" C

① BASE BID: LIGHTING PLAN  
SCALE: 1" = 40'-0"

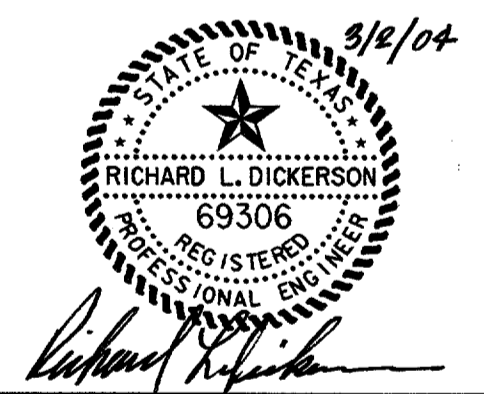
#DGN#SPECIFICATIONS  
 #REV# DATE  
 #APP# BY  
 #APP# DATE  
 #APP# DATE  
 #APP# DATE



NOTES:  
REFER TO LANDSCAPE ARCHITECTURAL PLANS FOR  
EXACT LIGHT POLE LOCATIONS.  
REFER TO NOTES AND DETAILS ON SHEET 55

② BASE BID: LIGHTING PLAN  
SCALE: 1" = 40'-0"

BENCHMARKS:  
 "□" CUT SOUTHWEST CORNER OF CURB INLET, WEST SIDE OF SPECTRUM DRIVE, ±30' NORTH OF MORRIS AVENUE. ELEV. 611.84  
 "□" CUT ON TOP EAST END OF CURB INLET ON NORTH SIDE OF MORRIS AVENUE AND ±150' EAST OF QUORUM DRIVE CENTERLINE. ELEV. 616.39  
 "X" CUT ON CONC. TOP OF CURB OF MEDIAN NOSE ON SPECTRUM DRIVE AT INTERSECTION OF MCENTIRE PLACE. ELEV. 619.30



DATE	DESCRIPTION	REF. NO.
03/02/04	REVISED ALL STREET AND PEDESTRIAN LTG	△
11/07/03	ISSUED FOR BID	

**BASE BID  
STREET LIGHT CONDUIT & POWER PLAN  
SPECTRUM DRIVE EXTENSION**

**TOWN OF ADDISON, TEXAS**

Huff Zolgers, Inc.  
3131 McKinney Ave., Suite 600, Dallas, TX 75204  
Phone (214) 871-3311/Fax (214) 871-0757

DESIGN	DRAWN	APPR.	SCALE	DATE	PROJECT NO.	NO.
HZI	HZI	DEM	1"=40'	NOV 2003	01-3220-01	54