

ADDISON CIRCLE
PHASE II
LOT 1, BLOCK D
VOL. 2000153, PG. 00015

FUTURE DEVELOPMENT
(TRACT III)
TEXOK PROPERTIES, L.P.
VOL. 2002240, PG. 03529

FUTURE DEVELOPMENT
(TRACT III)
TEXOK PROPERTIES, L.P.
VOL. 2002240, PG. 03529

QUORUM EAST ADDITION
VOL. 98001, PG. 00033
POST SERVICES, INC.
VOL. 98060, PG. 03404

ONCOR ELECTRIC
SERVICE UNDERGROUND
FROM POLE TO METER

(2) SERVICE POINT #1
SERVICE METER AND
LIGHTING CONTROL
PANEL "A"

THE ASHTON
LOT 1, BLOCK A
VOL. 2000036, PG. 02913

FUTURE DEVELOPMENT
THE STAUBACH COMPANY
VOL. 2000046, PG. 02903

FUTURE DEVELOPMENT
(TRACT III)
TEXOK PROPERTIES, L.P.
VOL. 2002240, PG. 03529

15851 DALLAS NORTH PARKWAY ADDITION
VOL. 85021, PG. 1686

UTAH STATE RETIREMENT INVESTMENT FUND
VOL. 96003, PG. 1968

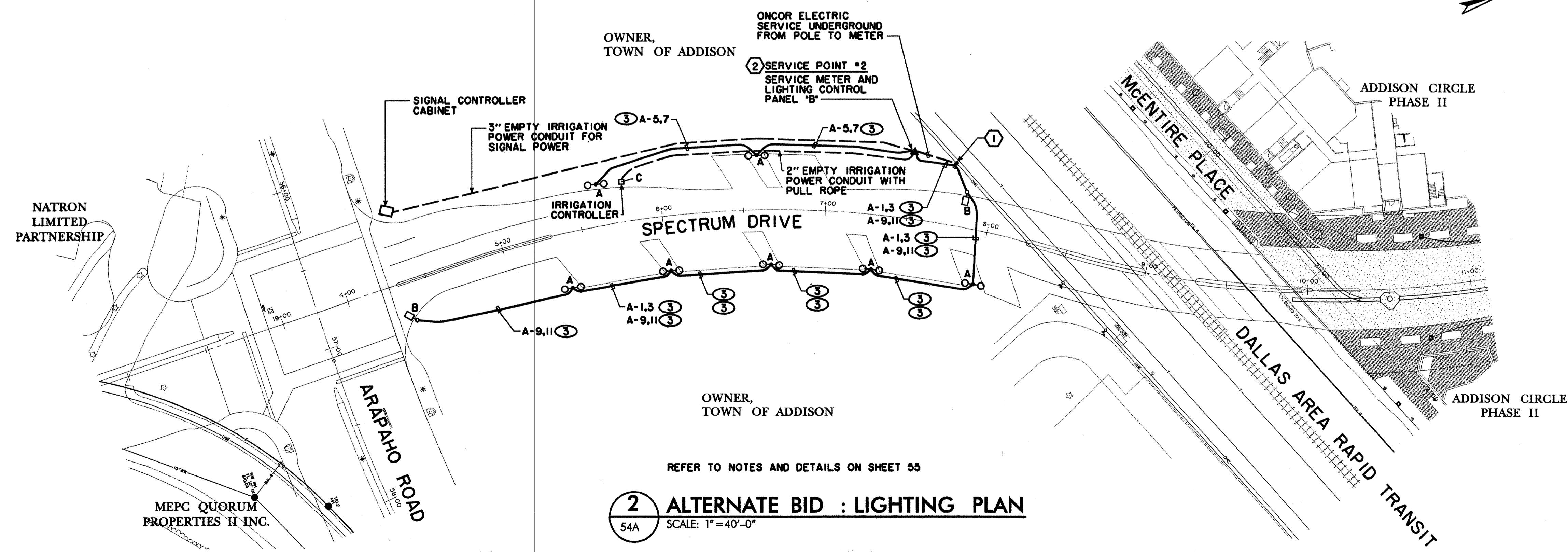
REFER TO NOTES AND DETAILS ON SHEET 55

1 ALTERNATE BID : LIGHTING PLAN
SCALE: 1" = 40'-0"

KEY NOTES	
NUMBER	DESCRIPTION
1	ONCOR ELECTRIC SERVICE POLE WITH AERIAL-TO-UNDERGROUND TRANSITION.
2	PROVIDE METER BANK IN NEMA 3R ENCLOSURE. MOUNT ON STEEL CHANNEL FRAME. CONSTRUCT FRAME TO SUPPORT METERS, CONTACTOR PANEL, DISCONNECT SWITCHES, PANELBOARD, TIME SWITCH AND PHOTOCCELL. REFER TO DETAILS ON SHEET 55.

LIGHTING CIRCUIT CONDUCTOR SCHEDULE	
MARK	WIRE
1	(2) #4, #8 GROUND
2	(2) #6, #8 GROUND
3	(2) #8, #8 GROUND

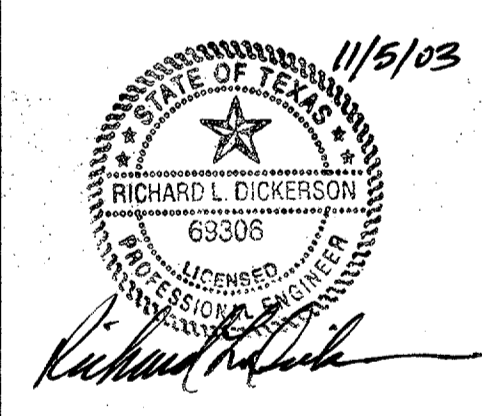
P:\PROJECTS\2003\ADDISON\ADDISON\ADDISON.dwg
 DATE PLOTTED: 11/07/03 10:40:00
 PLOTTER: HP DesignJet 5000PS
 PLOT SCALE: 1/4"=1'-0"
 PLOT DEVICE: HP DesignJet 5000PS



REFER TO NOTES AND DETAILS ON SHEET 55

2 ALTERNATE BID : LIGHTING PLAN
SCALE: 1" = 40'-0"

BENCHMARKS:
 "1" CUT SOUTHWEST CORNER OF CURB INLET, WEST SIDE OF SPECTRUM DRIVE, ±30' NORTH OF MORRIS AVENUE. ELEV. 611.84
 "2" CUT ON TOP EAST END OF CURB INLET ON NORTH SIDE OF MORRIS AVENUE AND ±150' EAST OF QUORUM DRIVE CENTERLINE. ELEV. 616.39
 "3" CUT ON CONC. TOP OF CURB OF MEDIAN NOSE ON SPECTRUM DRIVE AT INTERSECTION OF MCENTIRE PLACE. ELEV. 619.30



DATE	DESCRIPTION	REF. NO.
1/05/04	ISSUED FOR CONSTRUCTION	
11/07/03	ISSUED FOR BID	

**ALTERNATE BID
STREET LIGHT CONDUIT & POWER PLAN
SPECTRUM DRIVE EXTENSION**

TOWN OF ADDISON, TEXAS

HZI
 3131 McKinney Ave., Suite 600, Dallas, TX 75204
 Phone (214) 871-3311/Fax (214) 871-0757

DESIGN	DRAWN	APPR.	SCALE	DATE	PROJECT NO.	NO.
HZI	HZI	DEM	1"=40'	AUG 2003	01-3220-01	54A