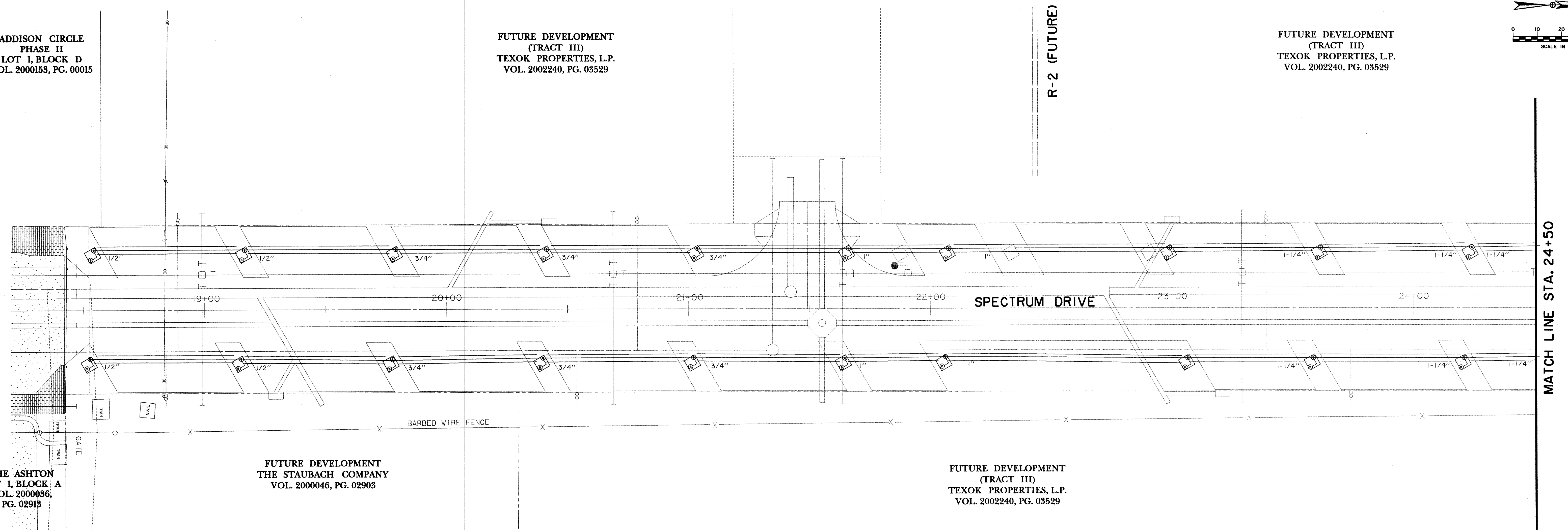
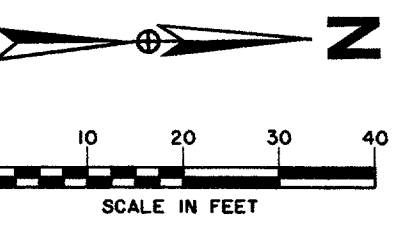


ADDISON CIRCLE
PHASE II
LOT 1, BLOCK D
VOL. 2000153, PG. 00015

FUTURE DEVELOPMENT
(TRACT III)
TEXOK PROPERTIES, L.P.
VOL. 2002240, PG. 03529

FUTURE DEVELOPMENT
(TRACT III)
TEXOK PROPERTIES, L.P.
VOL. 2002240, PG. 03529



THE ASHTON
LOT 1, BLOCK A
VOL. 2000036,
PG. 02913

FUTURE DEVELOPMENT
THE STAUBACH COMPANY
VOL. 2000046, PG. 02903

FUTURE DEVELOPMENT
(TRACT III)
TEXOK PROPERTIES, L.P.
VOL. 2002240, PG. 03529

MATCH LINE STA. 24+50

FUTURE DEVELOPMENT
(TRACT III)
TEXOK PROPERTIES, L.P.
VOL. 2002240, PG. 03529

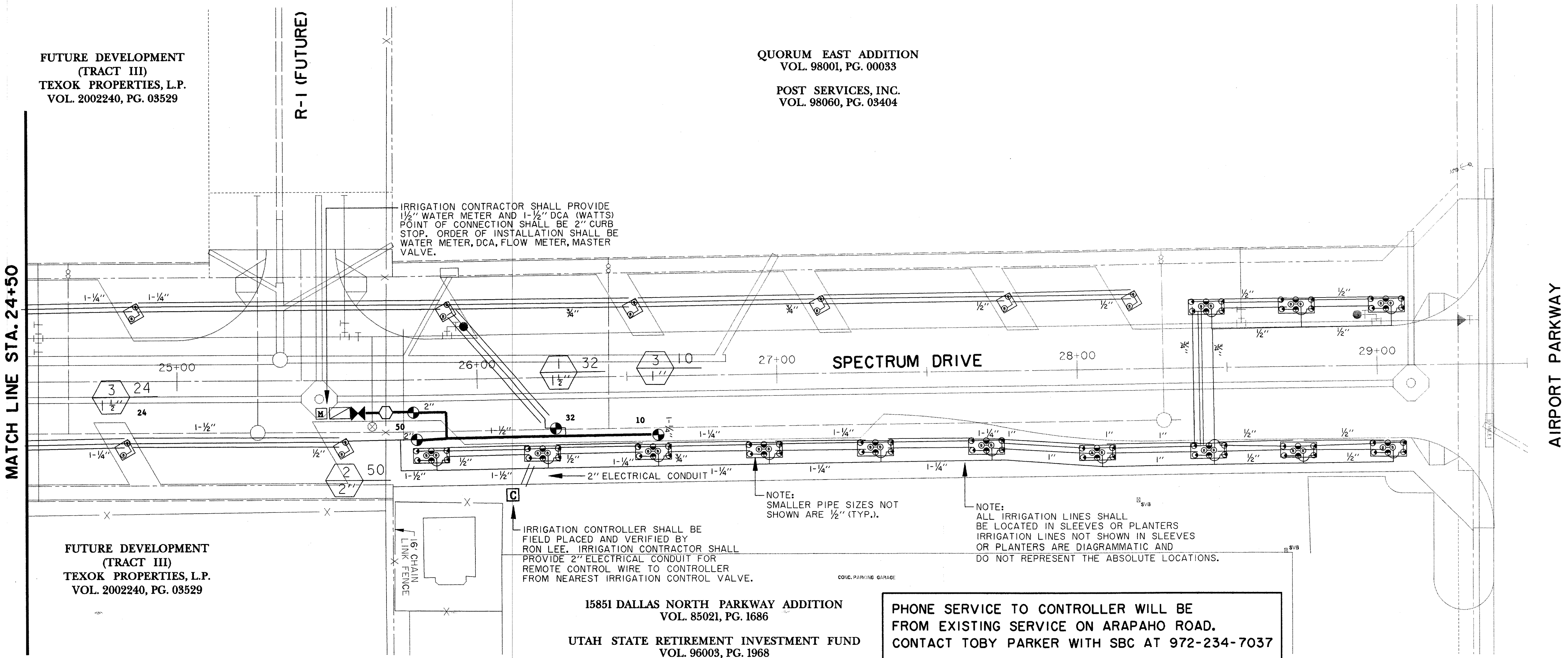
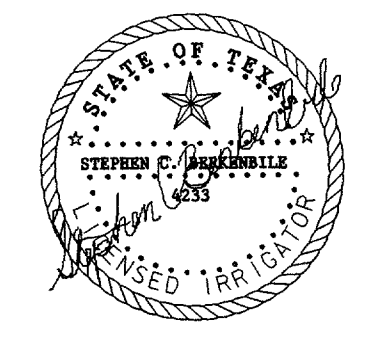
QUORUM EAST ADDITION
VOL. 98001, PG. 00033
POST SERVICES, INC.
VOL. 98060, PG. 03404

STEPHEN C BERKENBILE & ASSOCIATES
IRRIGATION DESIGN CONSULTANTS
2355 JOHNSON ROAD SOUTHLAKE, TX 76092 METRO (817) 817-379-9853 FAX (817) 431-1066

E:\Projects\101322001\Drawings\IRRIREF2.DWG
 DATE PLOTTED: 04/11/2003 10:00 AM
 PLOT SCALE: 1/8\"/>

IRRIGATION CONTRACTOR SHALL PROVIDE
1/2\"/>

BENCHMARKS:
 'C' CUT SOUTHWEST CORNER OF CURB INLET WEST SIDE OF SPECTRUM DRIVE, ±30' NORTH OF MORRIS AVENUE. ELEV. 611.84
 'C' CUT ON TOP EAST END OF CURB INLET ON NORTH SIDE OF MORRIS AVENUE AND ±150' EAST OF QUORUM DRIVE CENTERLINE. ELEV. 616.39



MATCH LINE STA. 24+50

AIRPORT PARKWAY

IRRIGATION CONTROLLER SHALL BE FIELD PLACED AND VERIFIED BY RON LEE. IRRIGATION CONTRACTOR SHALL PROVIDE 2\"/>

NOTE: SMALLER PIPE SIZES NOT SHOWN ARE 1/2\"/>

NOTE: ALL IRRIGATION LINES SHALL BE LOCATED IN SLEEVES OR PLANTERS IRRIGATION LINES NOT SHOWN IN SLEEVES OR PLANTERS ARE DIAGRAMMATIC AND DO NOT REPRESENT THE ABSOLUTE LOCATIONS.

15851 DALLAS NORTH PARKWAY ADDITION
VOL. 85021, PG. 1686
UTAH STATE RETIREMENT INVESTMENT FUND
VOL. 96003, PG. 1968

PHONE SERVICE TO CONTROLLER WILL BE FROM EXISTING SERVICE ON ARAPAHO ROAD. CONTACT TOBY PARKER WITH SBC AT 972-234-7037

DATE	DESCRIPTION	REF. NO.
1/05/04	ISSUED FOR CONSTRUCTION	
11/07/03	ISSUED FOR BID	

IRRIGATION PLAN						
SPECTRUM DRIVE EXTENSION						
TOWN OF ADDISON, TEXAS						
<small>HUITT - ZOLLARS, INC. 3131 McKinney Ave., Suite 600, Dallas, TX 75204 Phone (214) 671-3311/Fax (214) 871-0757</small>						
DESIGN	DRAWN	APPR.	SCALE	DATE	PROJECT NO.	NO.
HZI	HZI	SCB	1\"/>			