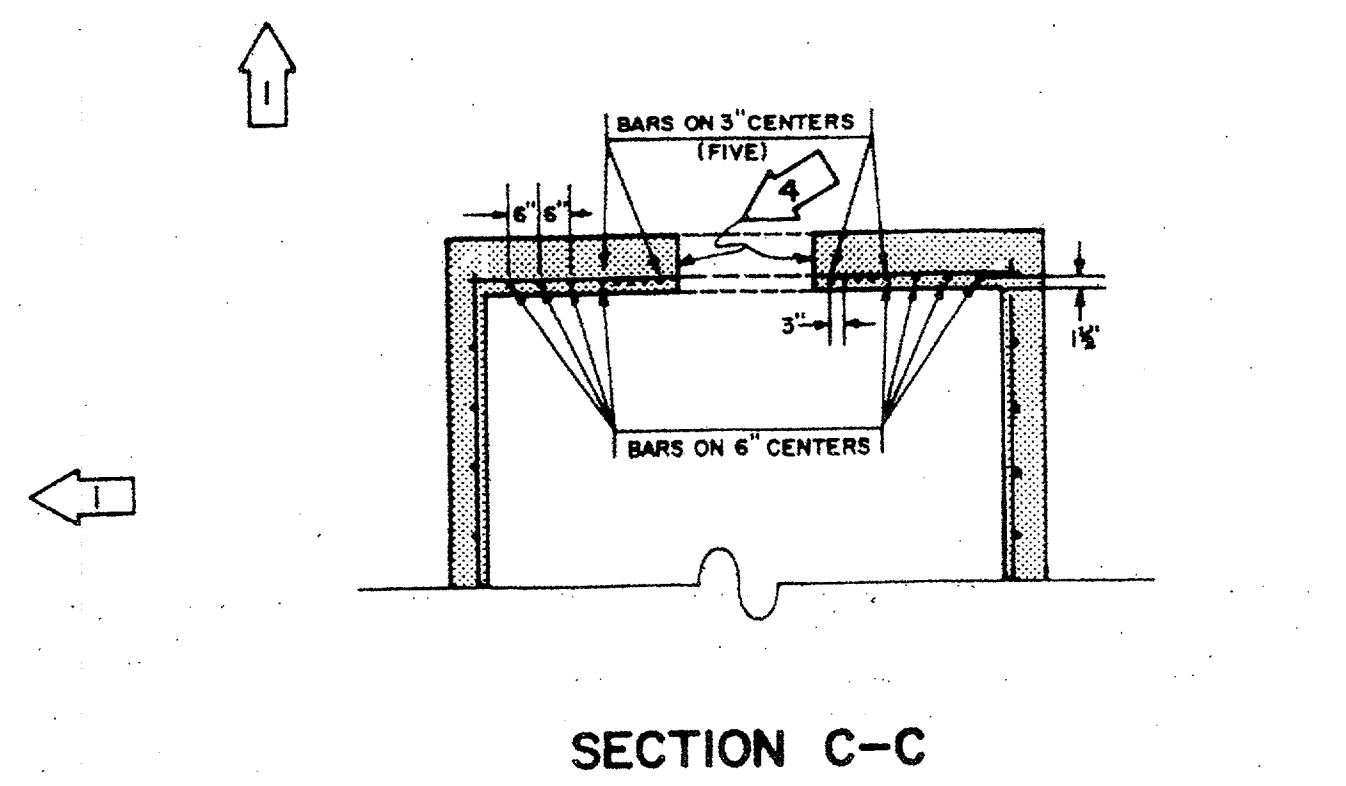
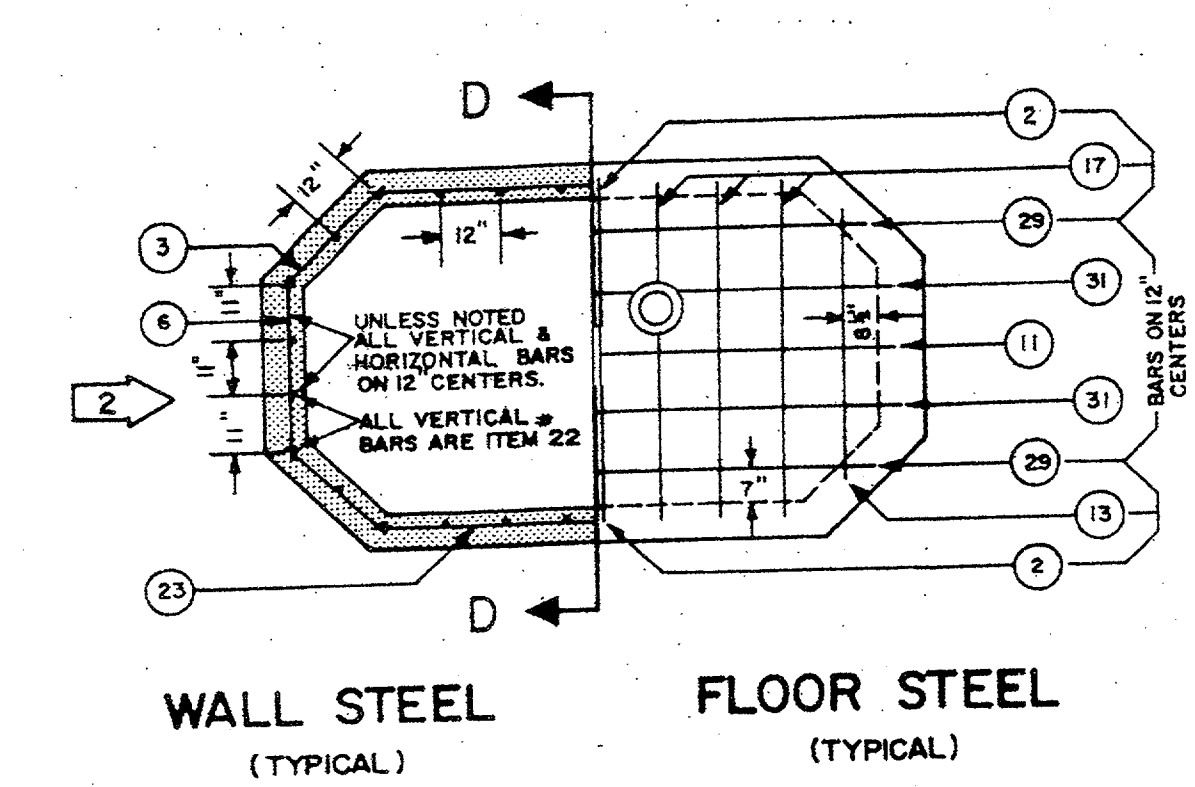
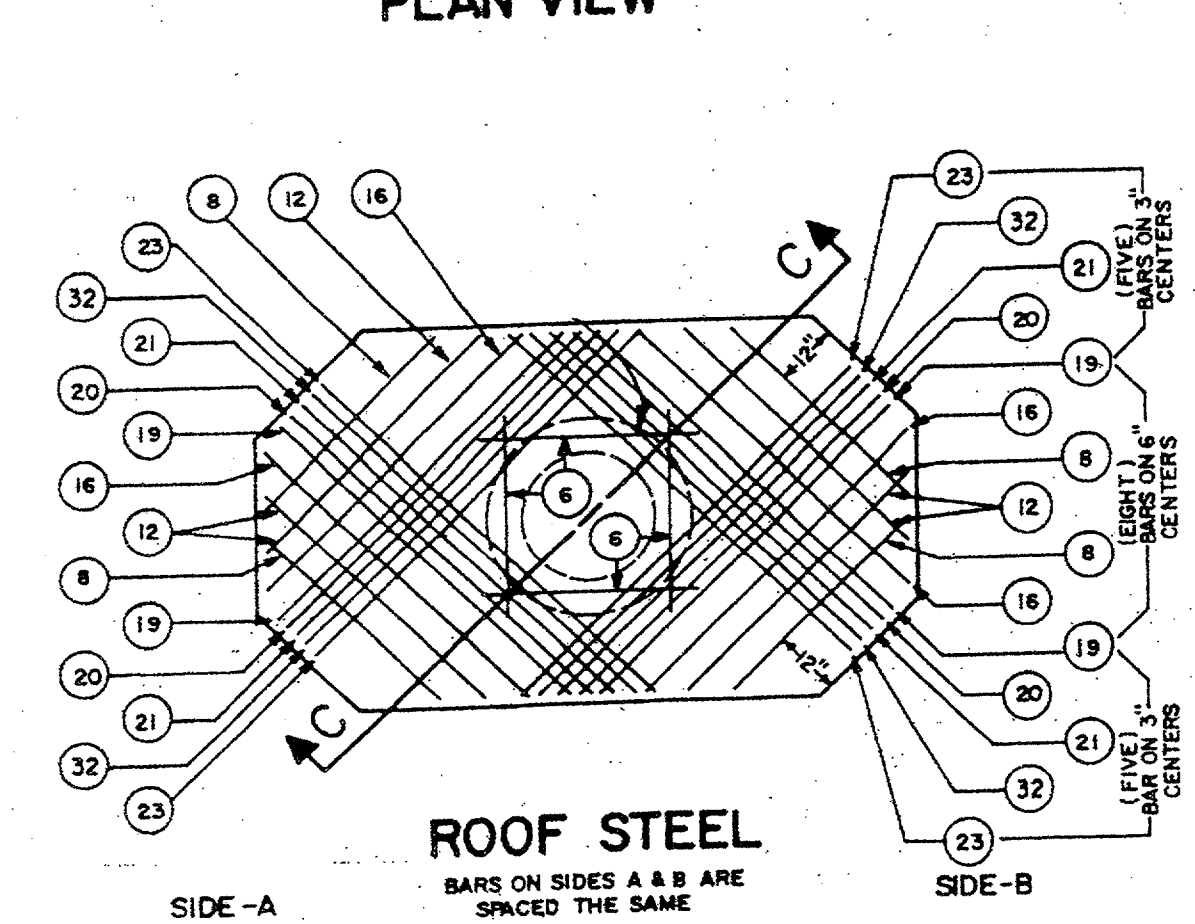
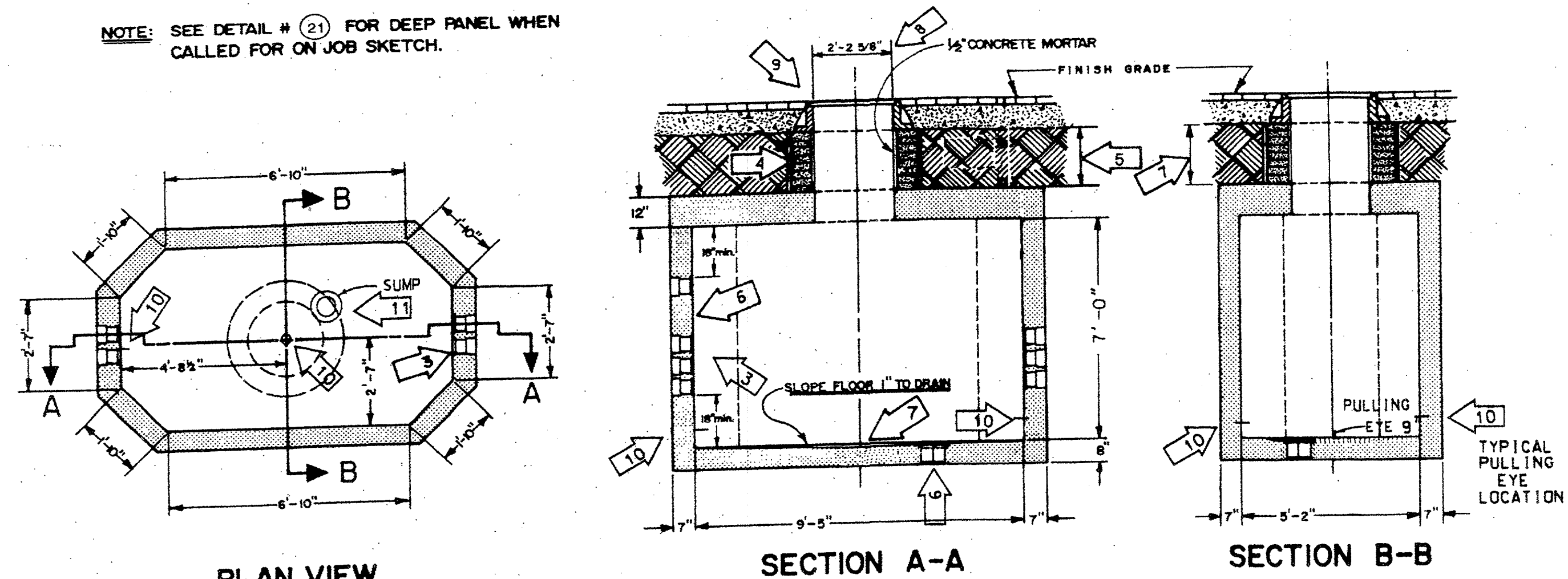


— TYPE "B" MANHOLE —
DETAIL #1

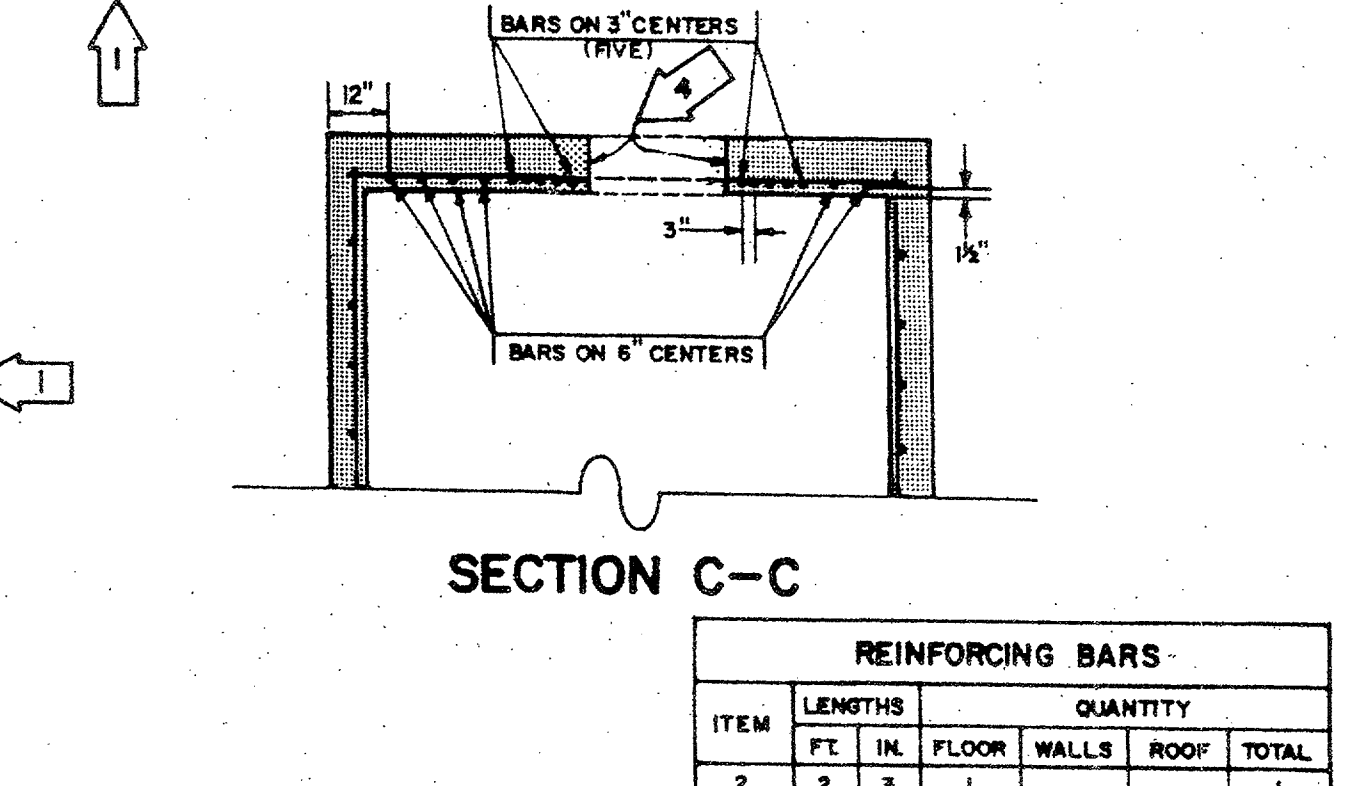
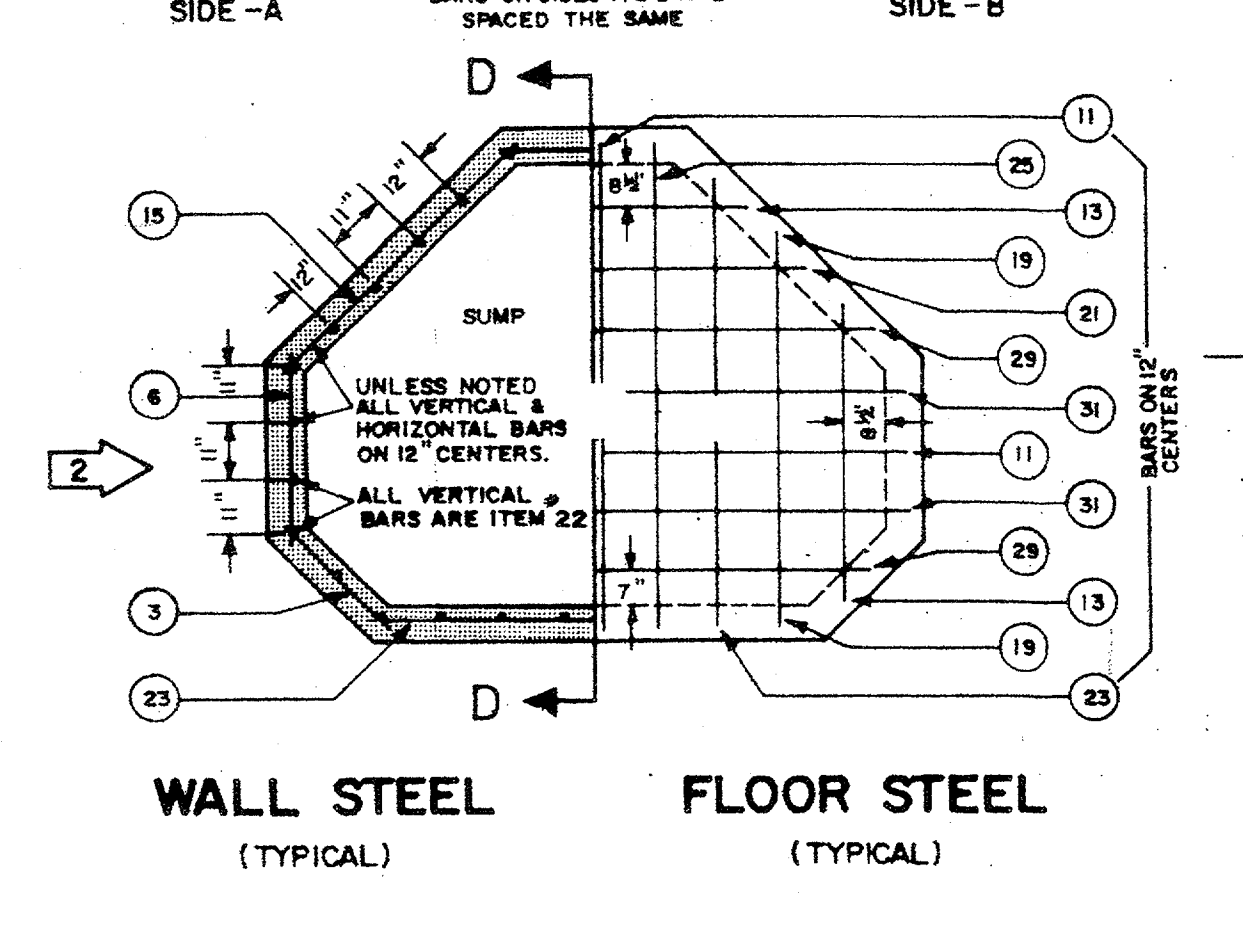
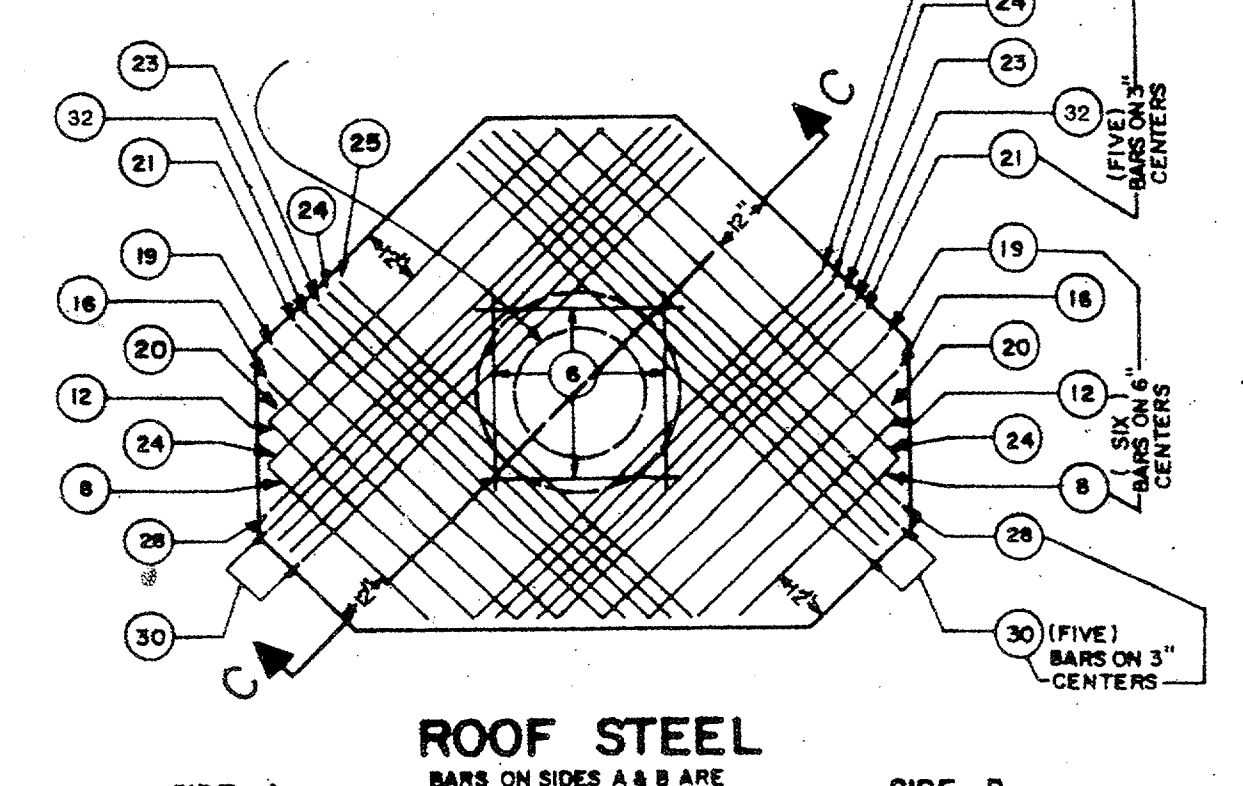
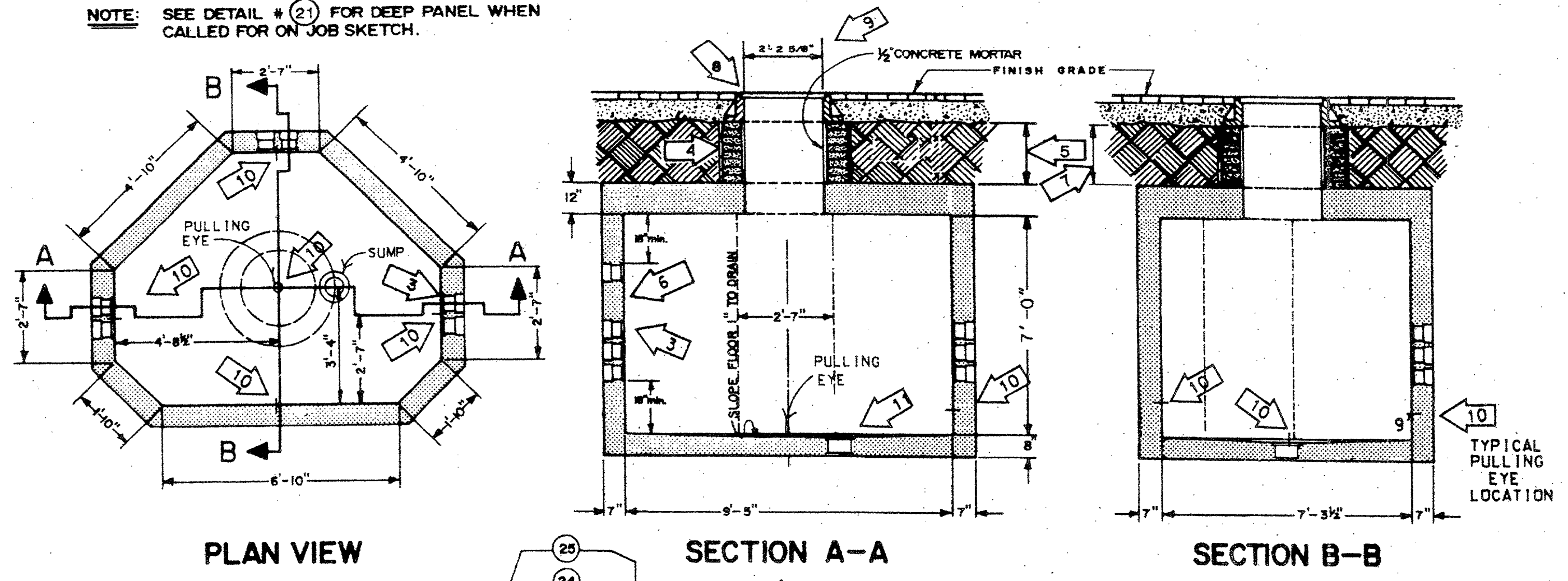


REINFORCING BARS

ITEM	LENGTHS		QUANTITY			TOTAL
	FT.	IN.	FLOOR	WALLS	ROOF	
2	2	3	2			2
3	2	6		24		24
6	3	3		12	4	16
8	3	9			4	4
11	4	6	2			2
12	4	9			4	4
13	5	0	2			2
16	5	9			4	4
17	6	0	6			6
19	6	6			4	4
20	6	9			4	4
21	7	0			4	4
22	7	10		28		18
23	7	6		12	4	16
29	9	0	2			2
31	10	3	2			2

STEEL TO CONFORM TO THE LATEST STANDARD SPECIFICATION FOR DEFORMED BILLET-STEEL BARS FOR CONCRETE REINFORCEMENT.
SEE DETAIL #10 FOR CONCRETE SPECIFICATION

— TYPE "C" MANHOLE —
DETAIL #2



REINFORCING BARS

ITEM	LENGTHS		QUANTITY			TOTAL
	FT.	IN.	FLOOR	WALLS	ROOF	
2	2	3	1			1
3	2	6		12		12
6	3	3		18	4	22
8	3	9			2	2
11	4	6	3			3
12	4	9			2	2
13	5	0	3			3
15	5	6		12		12
16	5	9			2	2
19	6	6	2			4
20	6	9			2	2
21	7	0	1			3
22	7	10		30		10
23	7	6	2	6	2	10
24	7	9			4	4
25	8	0	2			4
28	8	9			2	2
29	9	0	2			2
30	9	3			8	8
31	10	3	2			2

STEEL TO CONFORM TO THE LATEST STANDARD SPECIFICATION FOR DEFORMED BILLET-STEEL BARS FOR CONCRETE REINFORCEMENT.
SEE DETAIL #10 FOR CONCRETE SPECIFICATION

— GENERAL NOTES —

- 1 STANDARD HEADROOM - 7'-0" ALL REINFORCING BARS TO BE #5 DEFORMED BARS. ALL BARS TO HAVE MINIMUM COVER OF 1 1/2". ALL DIMENSIONS ARE TO G. OF BARS. SEE PLANS FOR EXTRA HEADROOM.
- 2 FIELD CUT STEEL AS REQUIRED FOR TERMINATORS.
- 3 NUMBER OF TERMINATORS SHOWN ON PLANS INSTALLED IN EACH END PANEL. SEE DETAIL #8
- 4 BLOCK UP CASTING WITH BRICKS TO FIVE-MENT GRADE. BRICKWORK TO RECEIVE 1/2" MORTAR COATING INSIDE & OUTSIDE.
- 5 1 1/2" MINIMUM CUSHION.
- 6 FOR GROUNDING DETAILS SEE DETAIL #17
- 7 A PRECAST REINFORCED CONCRETE NECK MAY BE USED WHEN 28" OR MORE. SEE DETAIL #13
- 8 4'-4" x 4'-4" x 6" CONCRETE SLAB AROUND M.H. CASTING WHEN INSTALLED IN UNPAVED AREA. SEE DETAIL #10
- 9 26 1/2" MH CASTING. SEE DETAIL #16
- 10 PULLING EYE. SEE DETAIL #12
- 11 SUMP. SEE DETAIL #14

1/05/04 ISSUED FOR CONSTRUCTION

TU ELECTRIC

CD

NETWORK UNDERGROUND APPURTENANCE SHEETS
MANHOLE DETAILS

E NUA-1
SHEET NO. 1

53
00-0343