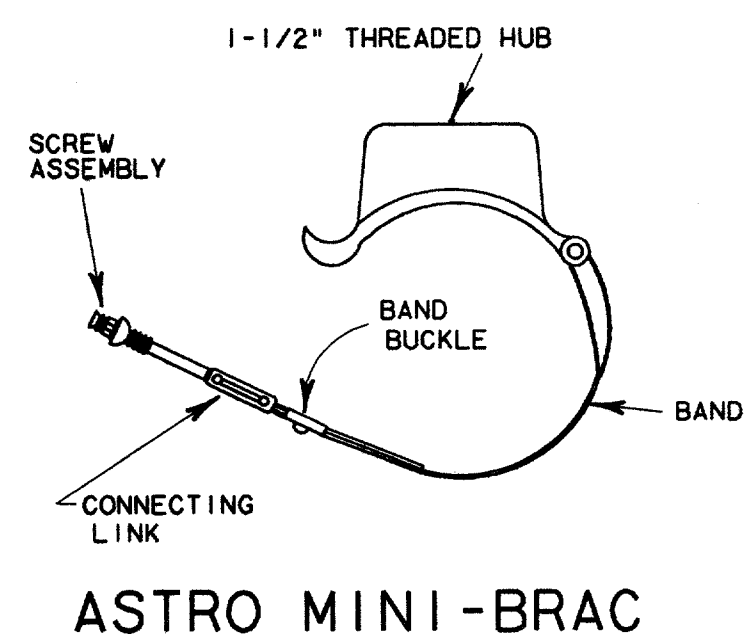


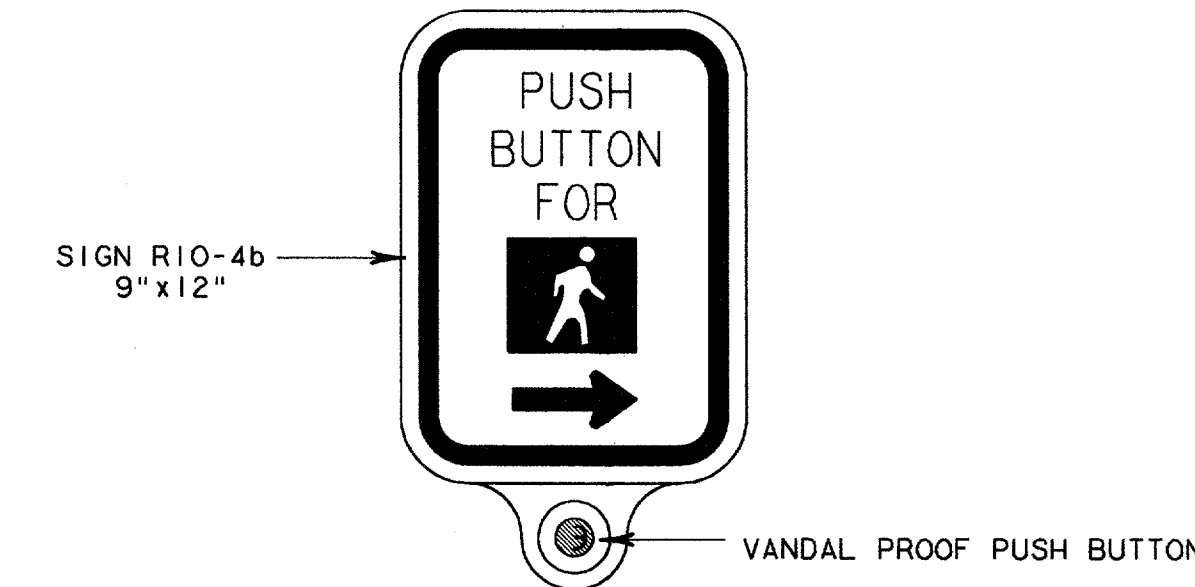
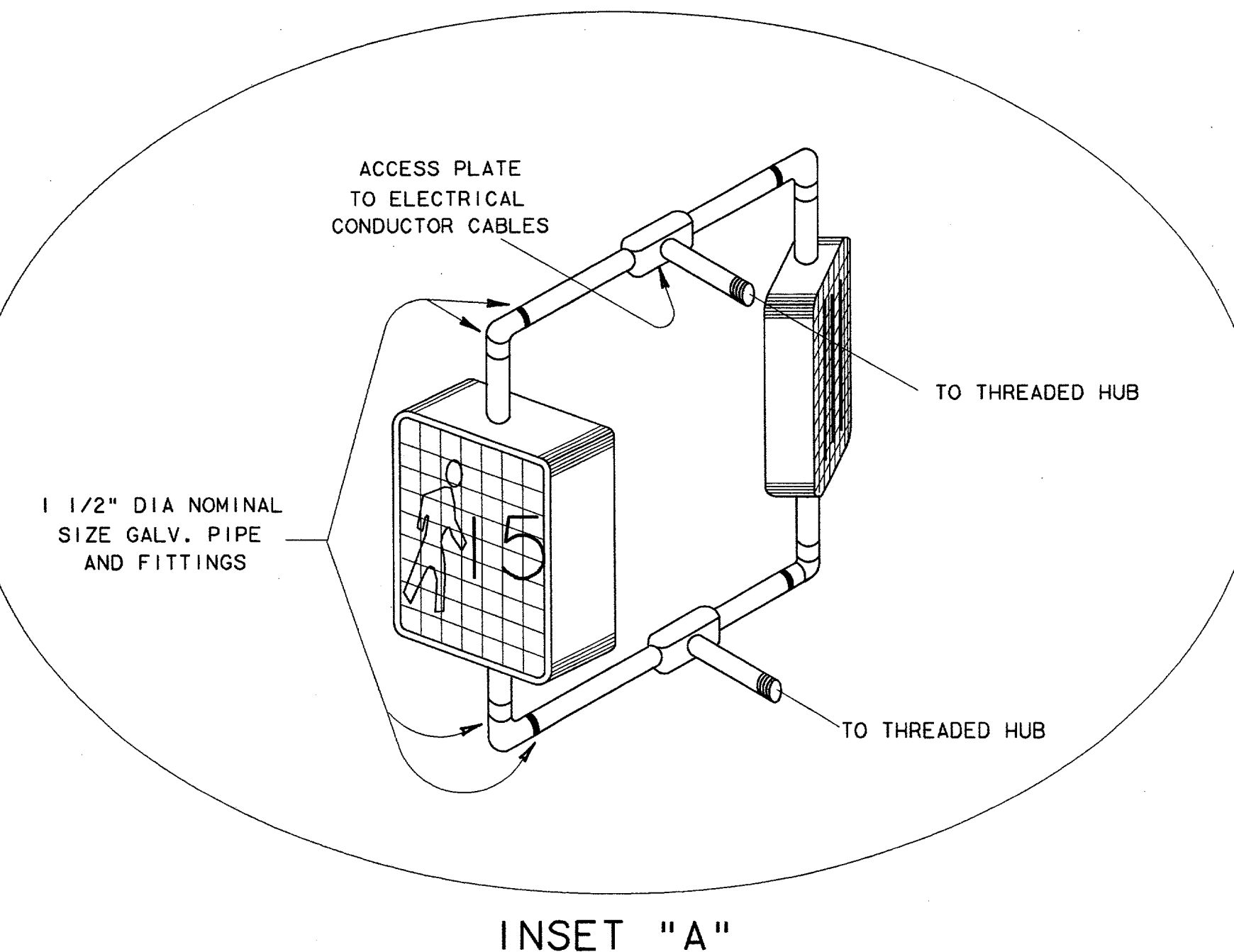
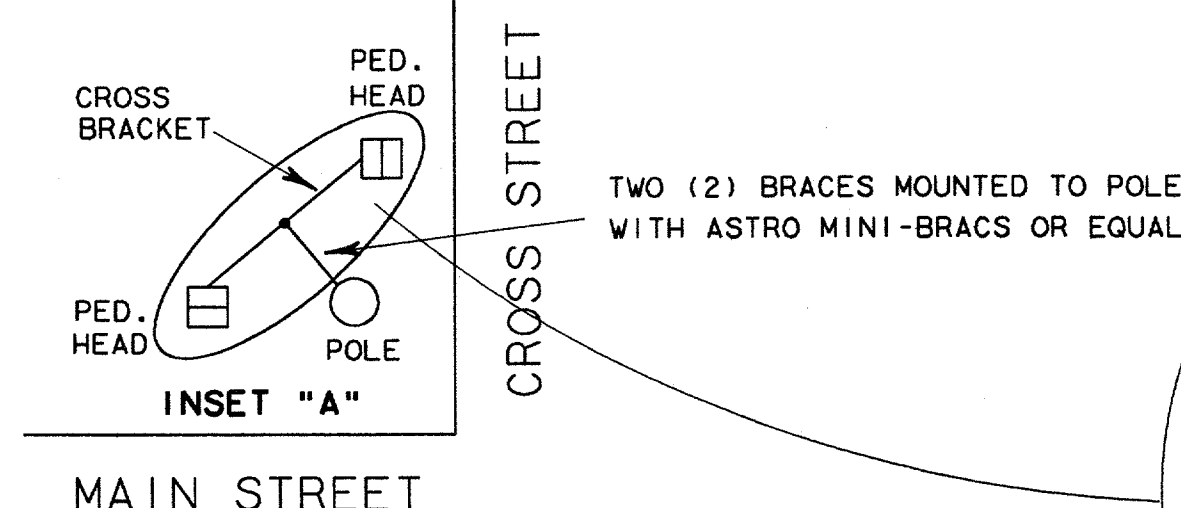
**MAST ARM POLE
(TYPE 1 AND 2)
DETAILS FOR MOUNTING SIGNAL AND
SIGN HARDWARE ON POLES**

GENERAL NOTES

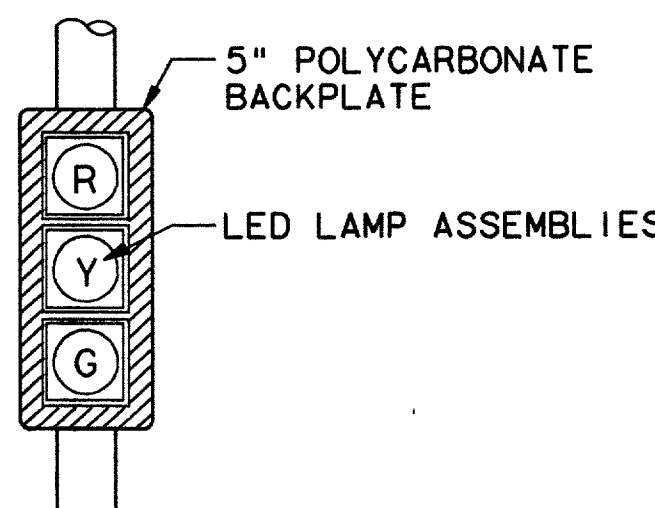
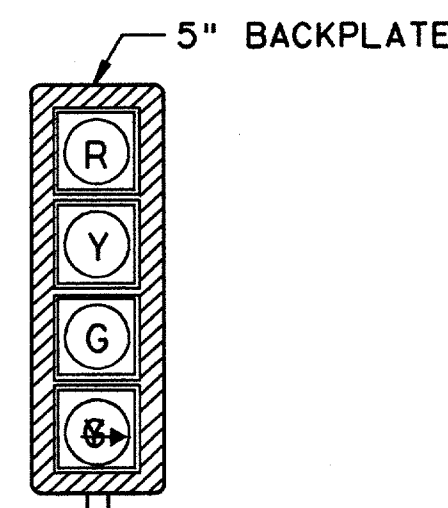
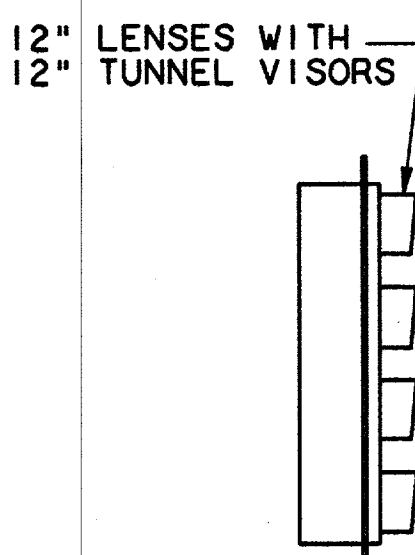
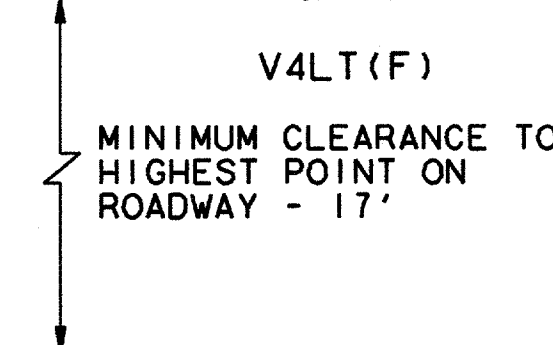
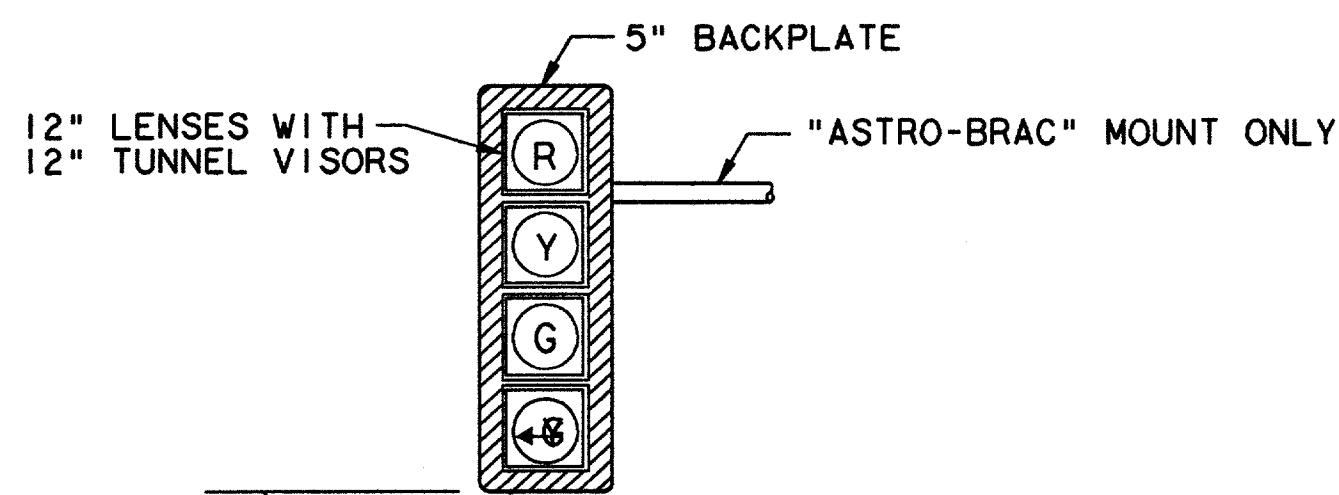
1. ALL WIRE FEED HOLES SHALL BE DRILLED IN THE FIELD BY THE CONTRACTOR. THE USE OF A BLOW TORCH FOR MAKING HOLES WILL NOT BE ALLOWED. COLD GALVANIZING COMPOUND SHALL BE APPLIED TO THE PERIMETER OF ALL DRILLED HOLES, ALLOWING ADEQUATE DRYING TIME BEFORE MOUNTING ANY SIGNAL OR SIGN HARDWARE.
2. 1 1/2" DIAMETER HOLES SHALL BE DRILLED ON THE BOTTOM FACE OF NEW GALVANIZED MAST ARMS WHEN MOUNTING HORIZONTAL SIGNAL HEADS. (WHEN MOUNTING VERTICAL SIGNAL HEADS ON THE MAST ARM, THE HOLES SHALL BE DRILLED ON THE FRONT FACE OF THE ARM.)
3. SIGNAL & SIGN HARDWARE SHALL BE MOUNTED AT THE DISTANCES AND LOCATIONS SHOWN ON THE DIAGRAMS ABOVE UNLESS OTHERWISE INSTRUCTED BY DOT FIELD REPRESENTATIVE.
4. IF THE VEHICLE SIGNAL HEAD IS SKEWED WITH RESPECT TO THE MAST ARM, THE CONTRACTOR MAYBE REQUIRED TO PROVIDE EXTENDED (12") "ASTRO-BRACKET" ARMS SO THAT THE BACKPLATE CLEARS THE MAST ARM.
5. IF THE DISTANCE BETWEEN THE SIDE MOUNT VEHICLE SIGNAL HEAD AND THE MAST ARM POLE IS NOT SUFFICIENT TO INSTALL A BACK PLATE THE CONTRACTOR MAY BE REQUIRED TO PROVIDE EXTENDED (12") "ASTRO-BRACKET" ARMS.
6. PEDESTRIAN SIGNAL HEAD ASSEMBLIES SHALL BE INSTALLED USING CLAMHELL MOUNT PEDESTRIAN SIGNAL MOUNTING HARDWARE.
7. NYLON BUSHINGS SHALL BE INSTALLED IN ALL WIRE FEED HOLES TO PROTECT THE WIRE INSULATION.
8. POLE MOUNTED SIGNAL HEADS SHALL BE INSTALLED ON THE AWAY-FROM-TRAFFIC SIDE OF THE SIGNAL POLE.
9. ALL SIGNAL HEAD LENSES SHALL BE 12" IN DIAMETER AND POLYCARBONATE, UNLESS OTHERWISE STATED.
10. ALL TRAFFIC SIGNAL AND PEDESTRIAN SIGNAL HEADS SHALL BE BLACK.
11. ALL SIGNAL HEADS WILL HAVE LED LAMP ASSEMBLIES & ALL TURN ARROWS SHALL BE BI-MODAL TYPE.
12. THE ADDISON - MITCHELL MOUNT & STANDARD SHALL BE UTILIZED IN THE INSTALLATION OF THE VIDEO DETECTION CAMERAS.



**PEDESTRIAN SIGNAL HEAD MOUNTED
FOR TWO PEDESTRIAN SIGNAL HEADS**



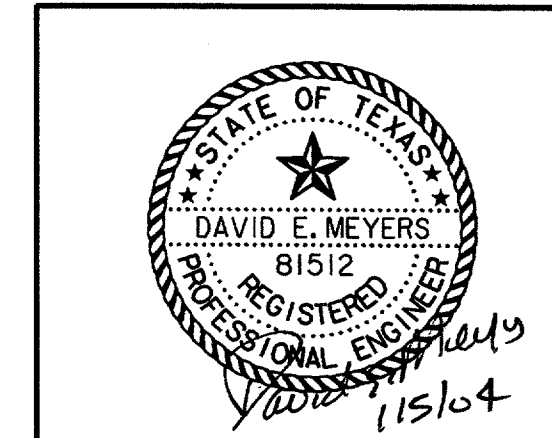
**PEDESTRIAN PUSH BUTTON
WITH INTEGRAL SIGN**



**TYPICAL SIGNAL PEDESTAL
TOP MOUNT -4- LENS HEAD**

NOTES:

1. THE PEDESTRIAN SIGNAL ASSEMBLIES SHALL BE COUNT DOWN LED.
2. FOR THIS PROJECT THE PEDESTRIAN SIGNAL HEAD AND PUSH BUTTON WILL BE MOUNTED ON THE SIGNAL POLE AS SHOWN ON THE "DETAIL OF SIGNAL POLE & MAST ARM".
3. ALL PEDESTRIAN SIGNAL HEADS SHALL BE INSTALLED ON THE AWAY-FROM-TRAFFIC SIDE OF THE PEDESTRIAN OR SIGNAL POLE.
4. ALL WIRING FOR PEDESTRIAN SIGNALS SHALL BE TOTALLY ENCLOSED WITHIN THE SIGNAL MOUNTING HARDWARE.
5. ALL PEDESTRIAN SIGNAL HEADS AND PUSH BUTTON SIGNALS SHALL DISPLAY THE SYMBOLIZED MESSAGE SHOWN ABOVE. (ADA APPROVED)
6. SYMBOLIZED MESSAGE HEIGHT SHALL BE 10 INCHES MINIMUM ON PEDESTRIAN SIGNAL HEADS.
7. V4 TURN SIGNALS SHALL HAVE LED BI-MODAL ARROWS.



DATE	DESCRIPTION	REF NO.
1/05/04	ISSUED FOR CONSTRUCTION	
11/07/03	ISSUED FOR BID	

TRAFFIC SIGNAL POLES, ARMS, & HEADS DETAILS AND ELEVATIONS					
SPECTRUM DRIVE EXTENSION					
TOWN OF ADDISON, TEXAS					
Hull - 201tors, Inc. 3131 McKinney Ave., Suite 600, Dallas, TX 75204 Phone (214) 871-3311/Fax (214) 871-0757					
DESIGN	DRAWN	APPR.	SCALE	DATE	PROJECT NO.
HZI	HZI	DEM	NTS	NOV 2003	01-3220-01
					63