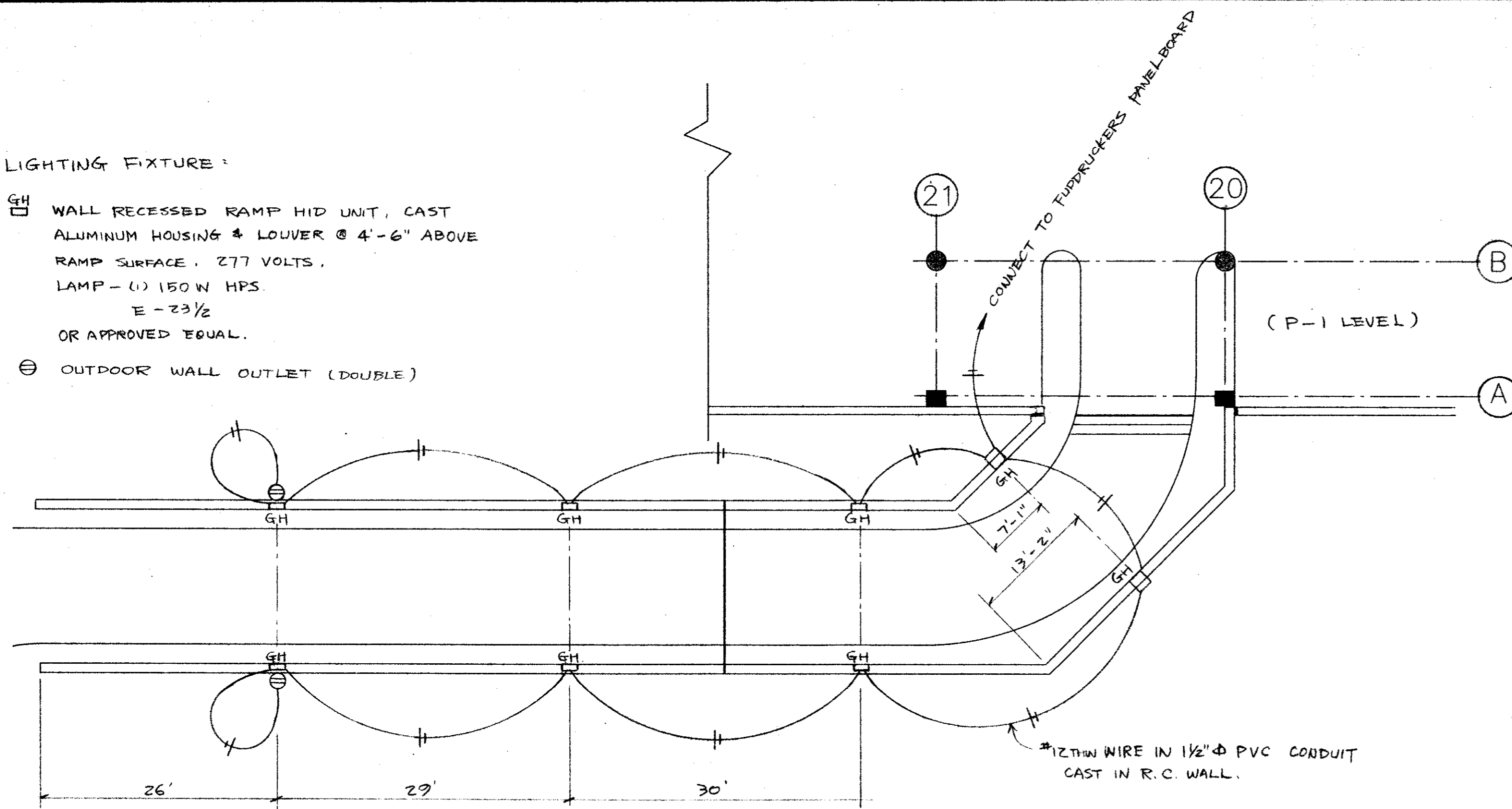


LIGHTING FIXTURE:

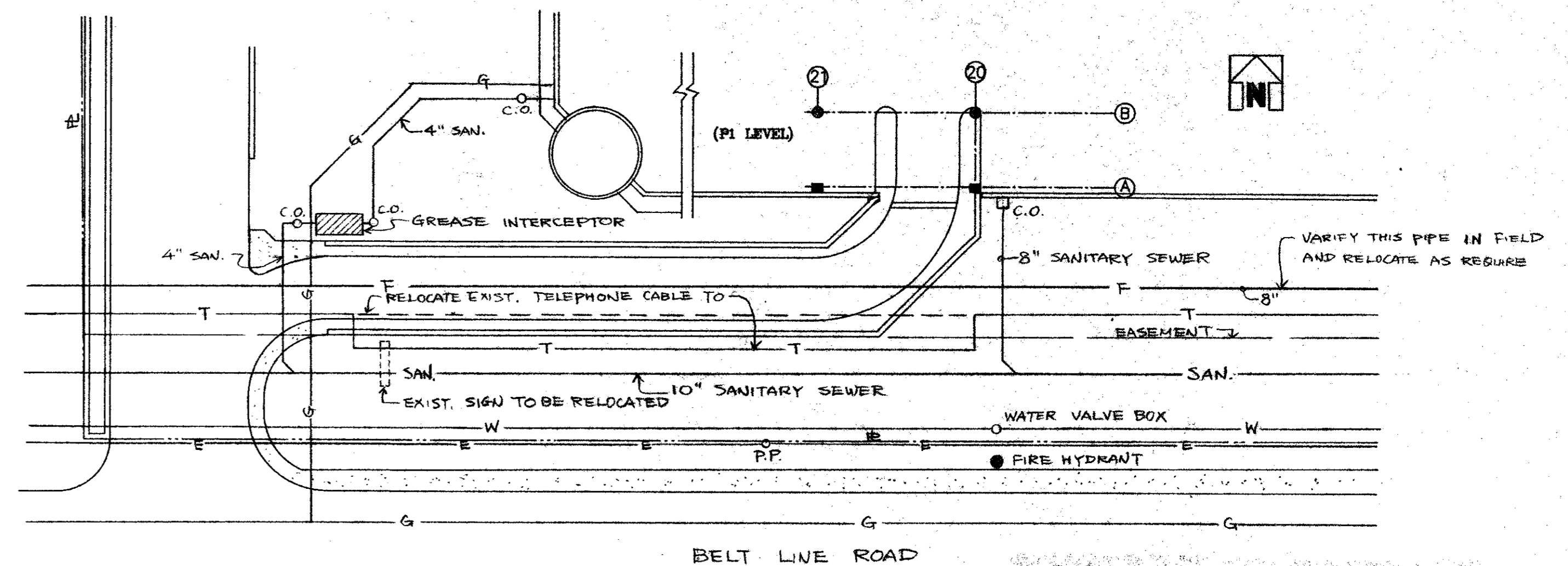
GH WALL RECESSED RAMP HID UNIT, CAST ALUMINUM HOUSING & LOUVER @ 4'-6" ABOVE RAMP SURFACE. 277 VOLTS, LAMP - (1) 150 W HPS. E-23 1/2 OR APPROVED EQUAL.

⊖ OUTDOOR WALL OUTLET (DOUBLE)



LIGHTING FIXTURE PLAN

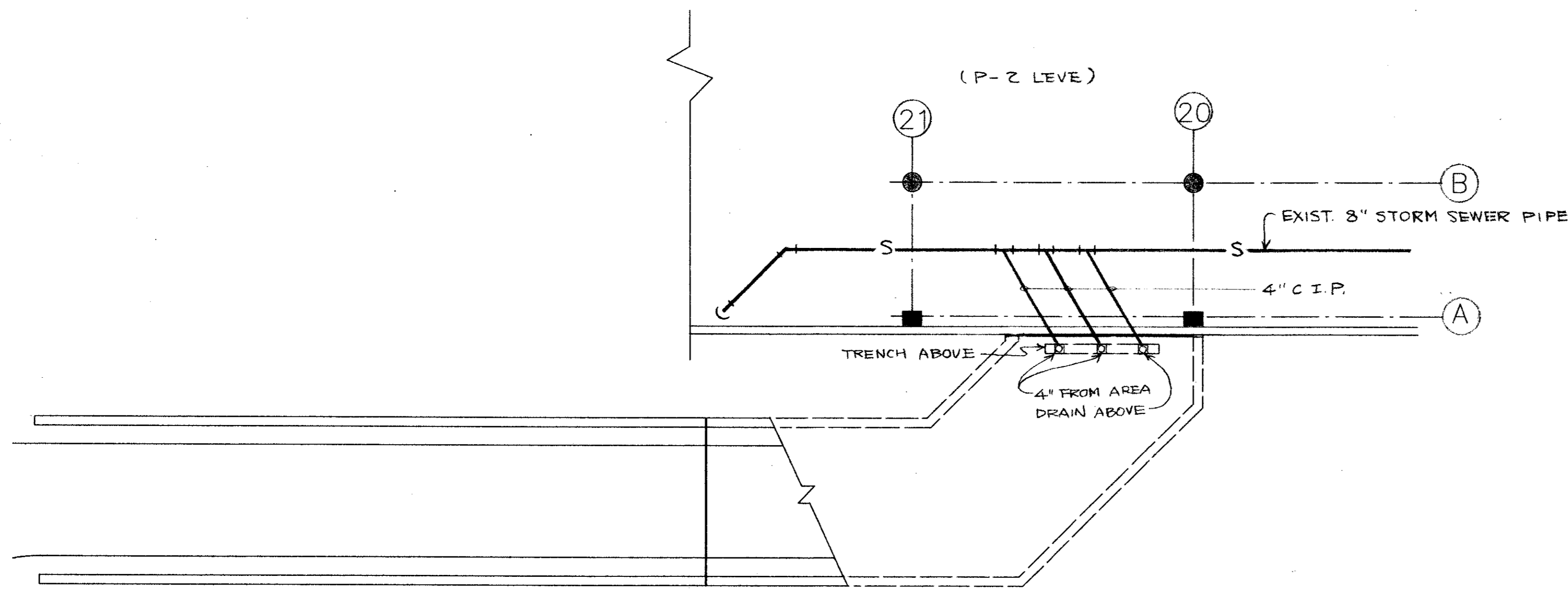
1" = 10'



UTILITY PLAN

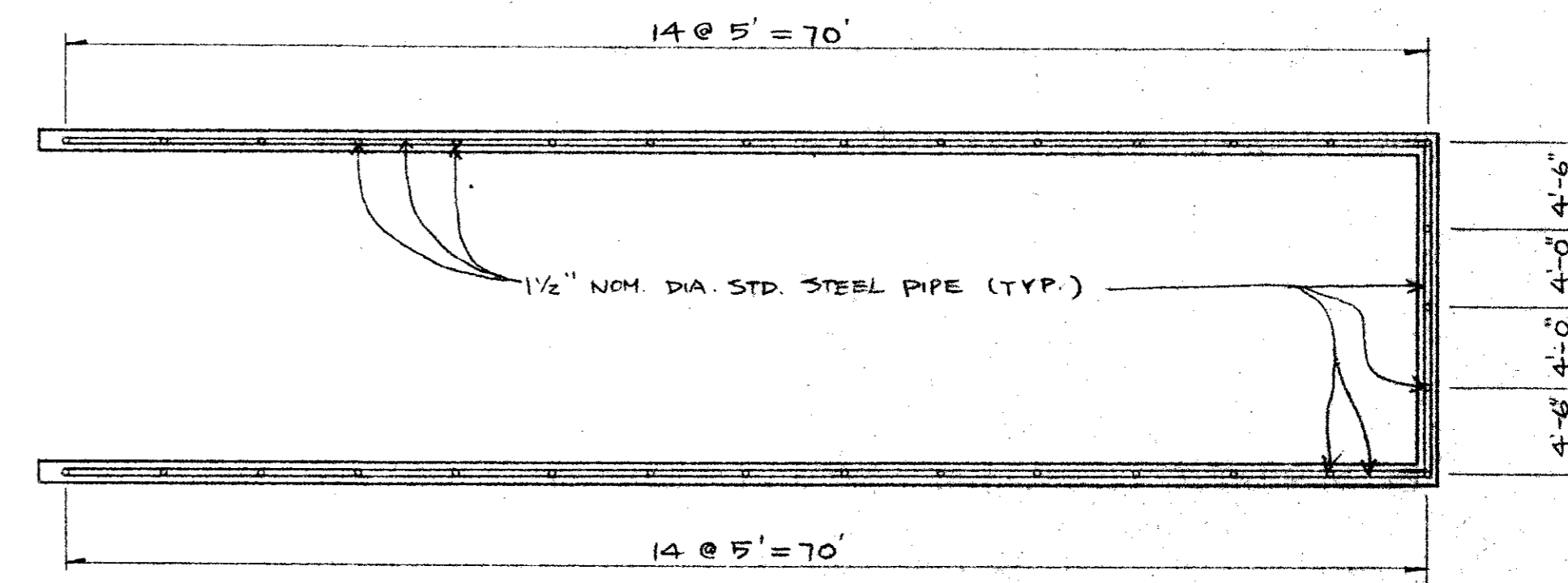
1" = 20'

- NOTES:
1. IT WILL BE THE RESPONSIBILITY OF THE CONTRACTOR TO PROTECT ALL PUBLIC UTILITIES IN THE CONSTRUCTION OF THIS PROJECT. ALL MANHOLES, CLEANOUTS, VALVE BOXES, FIRE HYDRANTS, ETC. MUST BE ADJUSTED TO PROPER LINE AND GRADE BY THE CONTRACTOR PRIOR TO AND AFTER THE PLACING OF PERMANENT PAVING.
 2. UTILITIES MUST BE MAINTAINED TO PROPER LINE AND GRADE DURING THE CONSTRUCTION OF THE PAVING FOR THIS PROJECT.



PLUMBING PLAN

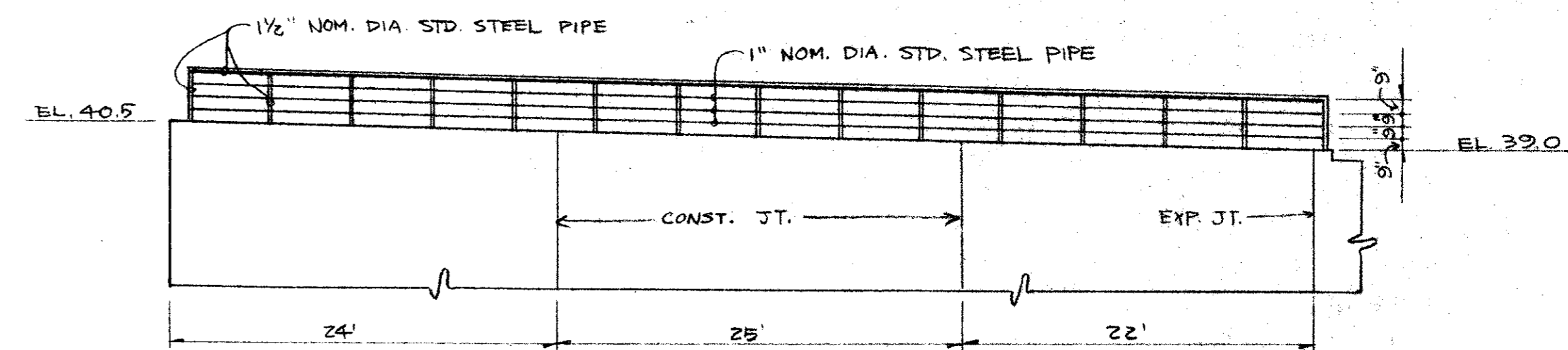
1" = 10'



NOTE: HANDRAILS SHOULD BE "HOLLAENDER MFG. CO." SPEED-RAIL W/ SLIP-ON FITTINGS SYSTEM OR EQUAL.

HANDRAILS PLAN

1/8" = 1'-0"



HANDRAILS ELEVATION

1/8" = 1'-0"

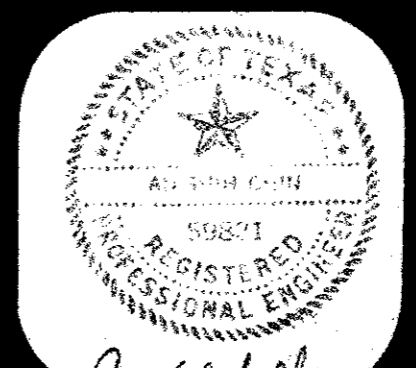
PLUMBING, LIGHTING, UTILITY & HANDRAILS

REVISIONS			
NO.	DESCRIPTION	DATE	BY

SPECTRUM CENTER
ADDISON, TEXAS

DeShazo, Starek & Tang, Inc.
PLANNERS & ENGINEERS
330 Union Station Dallas, Texas 75202-4802 214-748-6740
One Memorial Plaza, Suite 302 7633 East 63rd Place Tulsa, Oklahoma 74133-1294 918-350-2621
208 W. 4th Street Austin, Texas 78701-3917 512-472-4214

DESIGNED BY : A.C. DATE : 10-10-86
DRAWN BY : A.C. DATE : 10-10-86
CHECKED BY : K.T. DATE : 10-15-86
APPROVED BY : _____ DATE : _____



NEW GARAGE RAMP
(NEAR BELTLINE ROAD)
SCALE: AS SHOWN 0 10 20 30 40 50 60 70 80 90 100 ft.

SHEET 4 OF 9
FILE NO. 86379