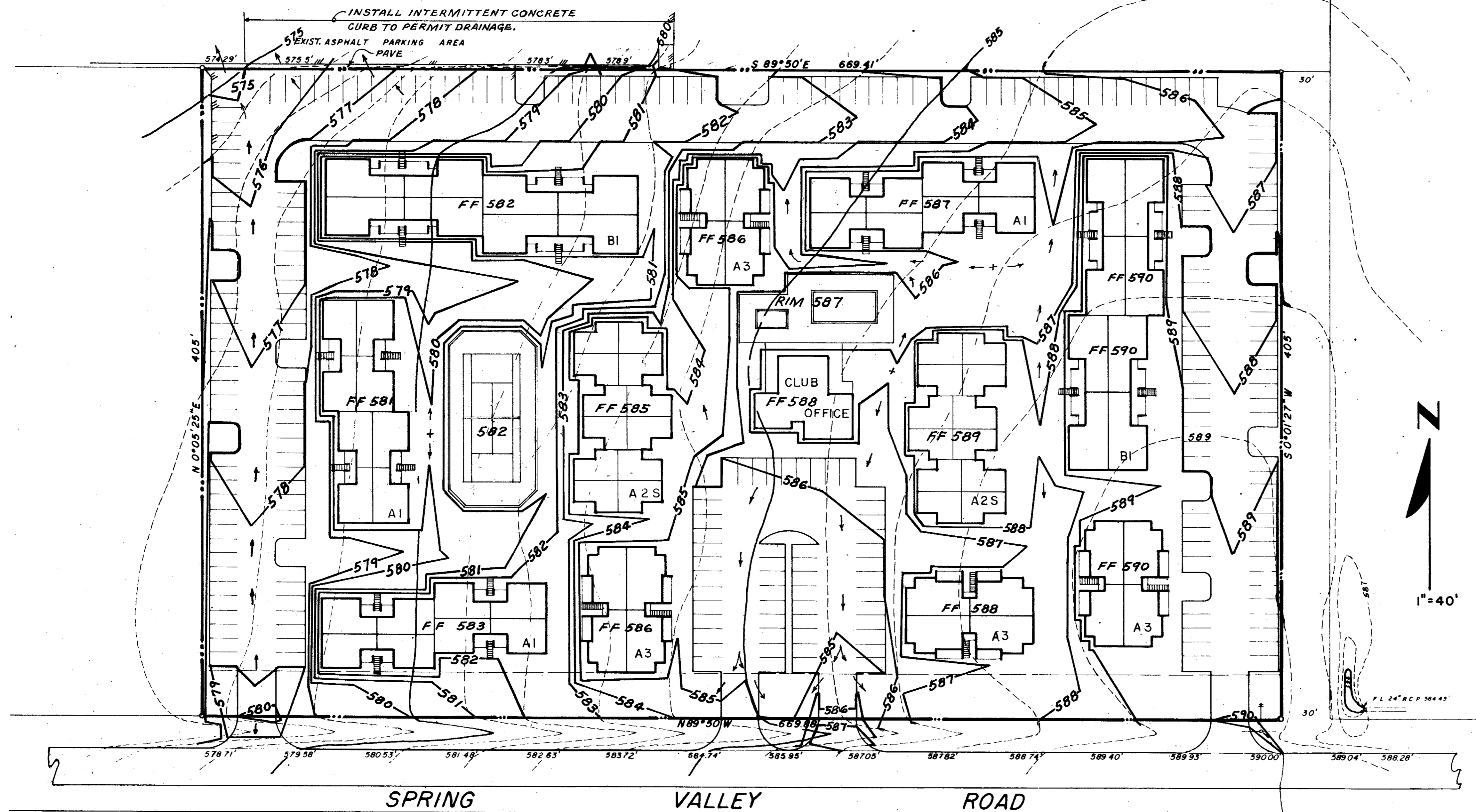
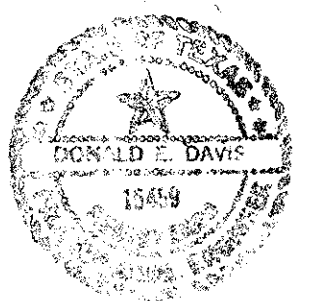
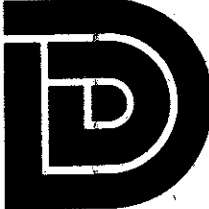


SHADOWOOD APT'S. I



BENCHMARK - 60d Nail in north side of pole  
Elev - 590.42'

<b>SITE GRADING PLAN</b>	
<b>SHADOWOOD APARTMENTS 3</b>	
ADDISON	TEXAS
JOB NO. C 1076	DATE: MAR. 15, 1977
REV.	
	
DONALD E. DAVIS CONSULTING ENGINEERS 	
3000 McKinney Ave., Dallas, Texas 75204	