

REVISIONS:
 No. Date

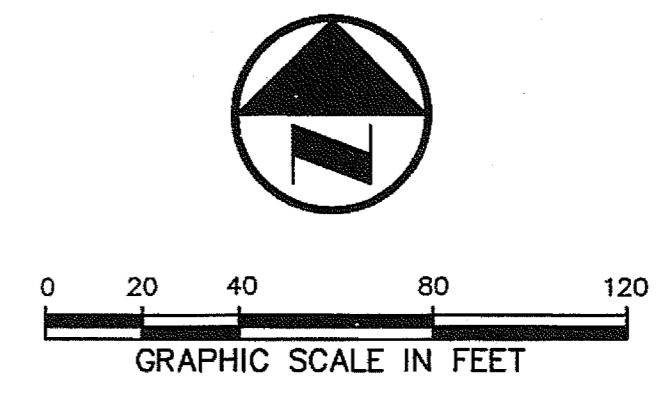
ALFRED J. LOOS SWIMMING CENTER RENOVATIONS
 DALLAS INDEPENDENT SCHOOL DISTRICT

KEYPLAN:

BID PACKAGE 79 ORG #846
 BID PACKAGE 79 ORG #849
 JOB NO. 0903
 DATE: September 30, 2009

BACKGROUND

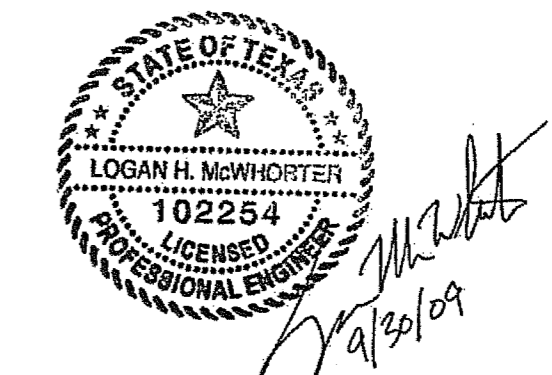
C2.1



LEGEND

B	BOLLARD
EM	ELECTRIC METER
PP	POWER POLE
LS	LIGHT STANDARD
WM	WATER METER
WV	WATER VALVE
ICV	IRRIGATION CONTROL VALVE
FH	FIRE HYDRANT
CN	CLEANOUT
MH	MANHOLE
TSC	TRAFFIC SIGNAL CONTROL
TSP	TRAFFIC SIGNAL POLE
TELE	TELEPHONE BOX
FL	FLOOD LIGHT
FP	FLAG POLE
TR	TRAFFIC SIGN
IRS	1/2-INCH IRON ROD
W/P	PACHECO KOCH CAP SET
(C.M.)	CONTROLLING MONUMENT
---	PROPERTY LINE
---	FENCE
[Pattern]	4" REINFORCED CONCRETE (CLASS "A", 3000 PSI)
[Pattern]	FIRE LANE, 4" REINFORCED CONCRETE PAVEMENT (CLASS "C", 3600 PSI)

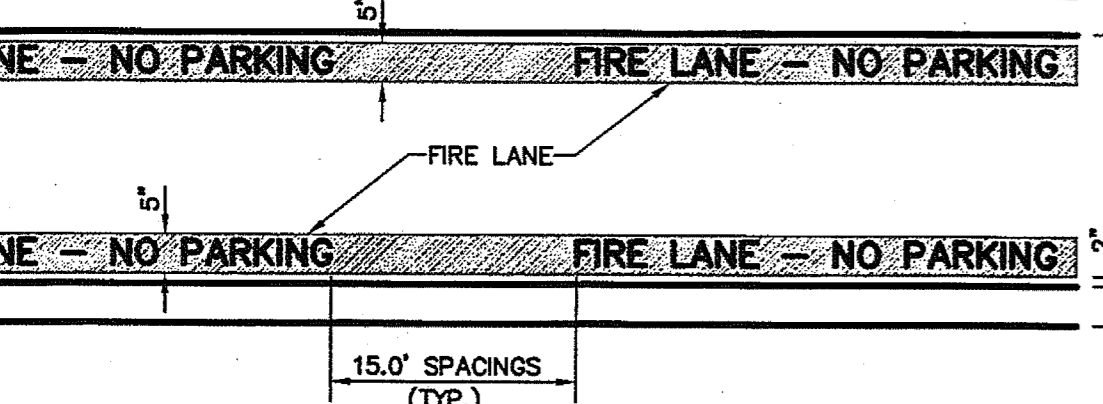
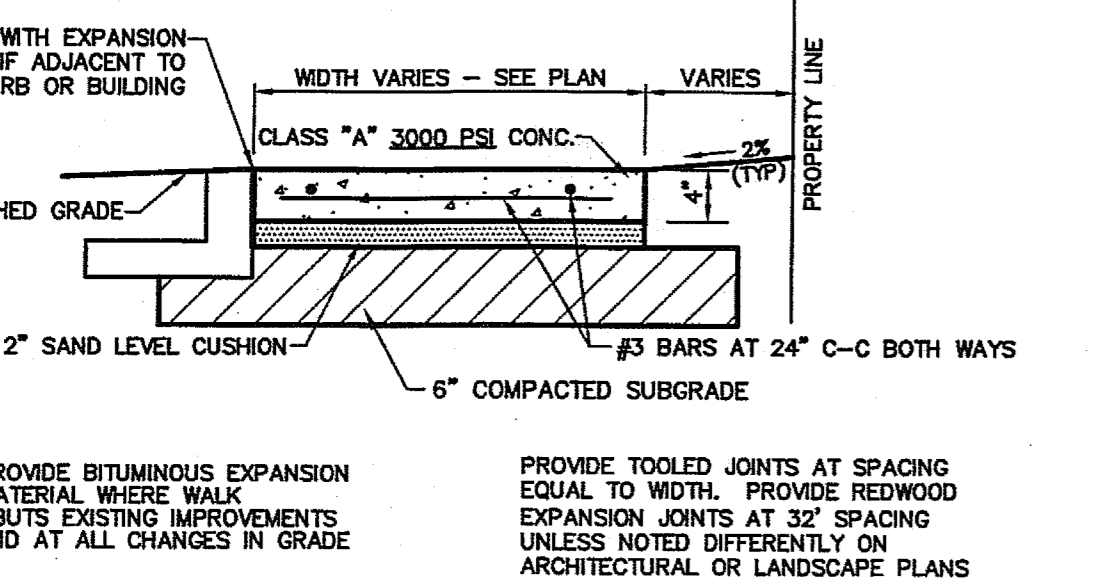
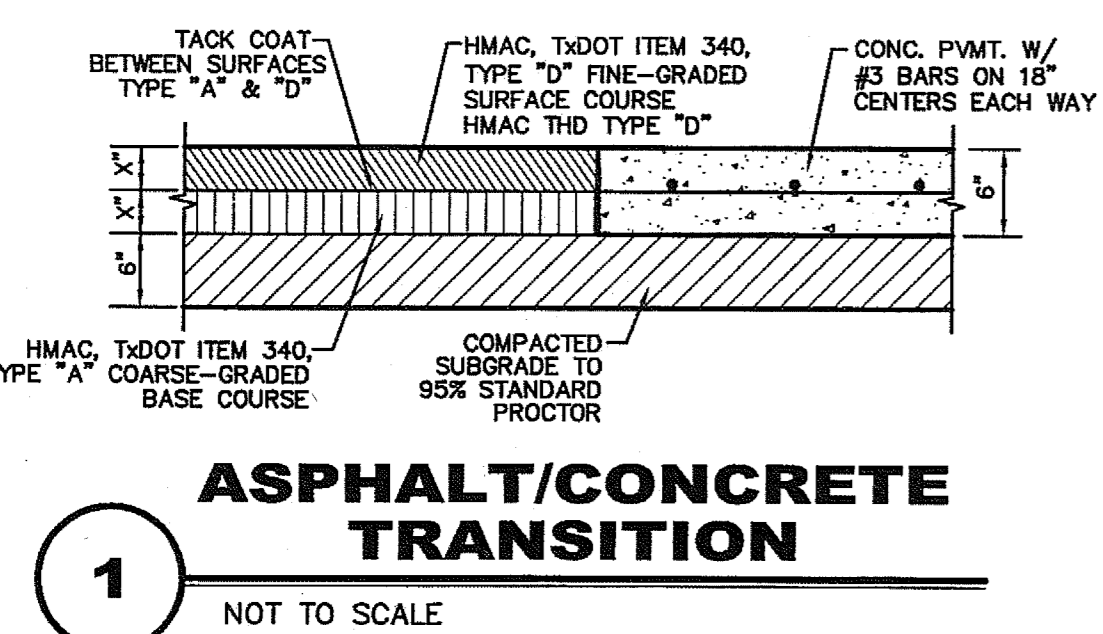
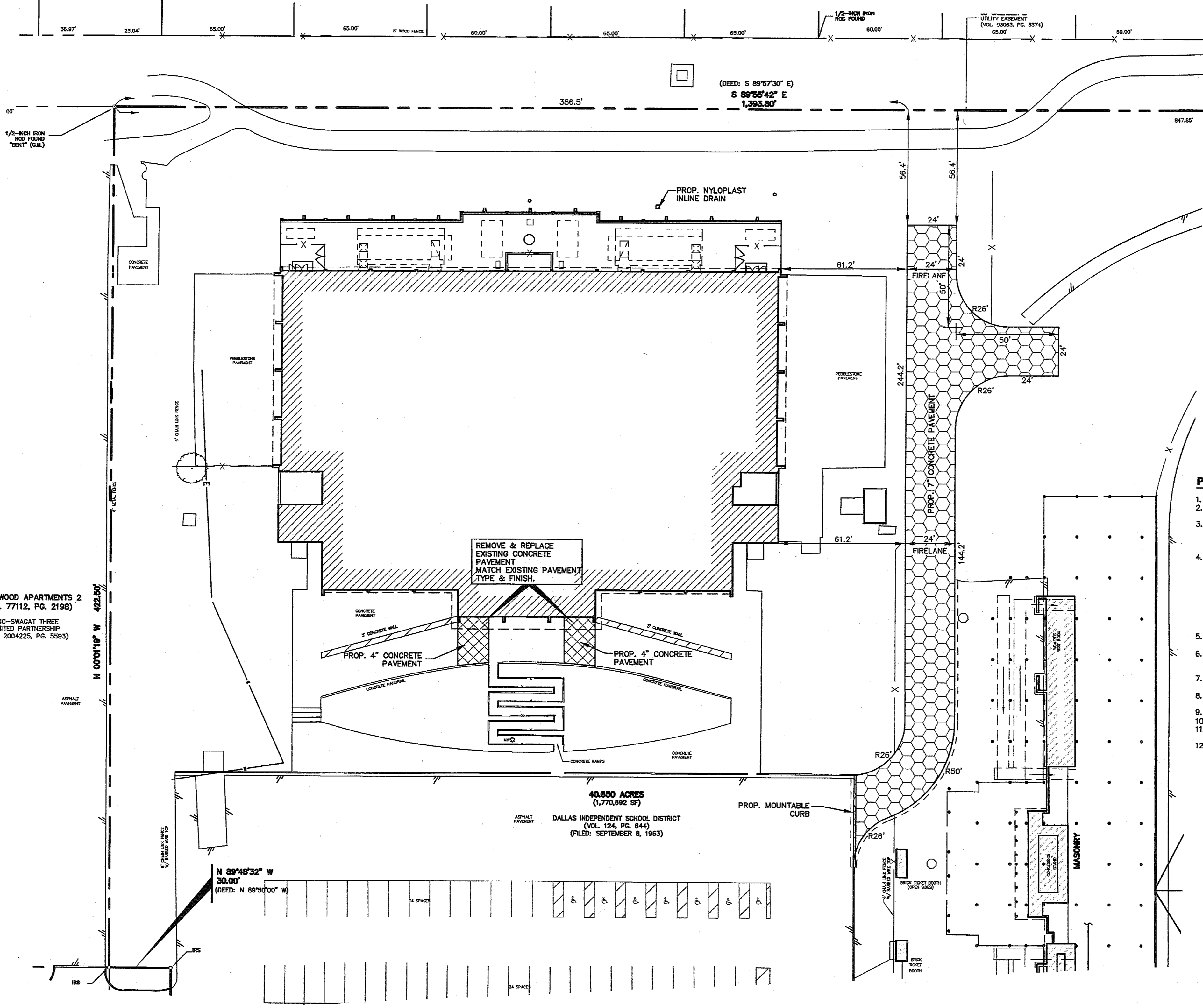
- PAVING GENERAL NOTES**
- ALL DIMENSIONS ARE FROM BACK OF CURB UNLESS OTHERWISE NOTED.
 - ALL CONCRETE SHALL CONFORM TO NCTCOG ITEM 303.3.4, CLASS "A" (3000 PSI) UNLESS OTHERWISE SHOWN ON THESE PLANS OR STATED IN STANDARD TOWN SPECIFICATIONS.
 - UNLESS NOTED, ALL FILL PLACED UNDER PAVING SHALL BE COMPACTED TO 95% STANDARD PROCTOR DENSITY IN 6 INCH LIFTS. REFER TO STRUCTURAL SPECIFICATION FOR FILL PLACED BENEATH BUILDING AREAS. ALL OTHER FILL AREAS TO BE COMPACTED TO 90% STANDARD PROCTOR.
 - JOINTS FOR CONCRETE PAVING SHALL BE INSTALLED IN ACCORDANCE WITH THE AMERICAN CONCRETE PAVEMENT ASSOCIATION (ACPA) RECOMMENDATIONS. CONTRACTION/CONTROL JOINT SPACING FOR CONCRETE PAVEMENT DEPENDS ON THE PAVEMENT THICKNESS AND THE SUBGRADE PREPARATION. CONTRACTOR SHALL REFER TO ACPA PUBLICATION 808.0101 AND 804.0111 FOR THE JOINT SPECIFICATIONS AND THE LAYOUT OF PAVEMENT JOINTS (NON-PAY ITEM). PRIOR TO SUBGRADE STABILIZATION, THE CONTRACTOR SHALL SUBMIT A FULL SIZE 24"X36" JOINT LAYOUT PLAN TO SCALE INCLUDING ALL JOINTS (SAWED CONTRACTION JOINTS, EXPANSION JOINTS, ETC.) INCLUDING RADIAL JOINTS AT ISLANDS FOR REVIEW AND APPROVAL BY THE ENGINEER PRIOR TO PLACING ANY CONCRETE PAVEMENT.
 - TRANSVERSE CONSTRUCTION JOINTS SHALL BE USED AT THE END OF EACH DAY'S PAVING AND WHERE INTERRUPTIONS SUSPEND OPERATIONS FOR 30 MINUTES OR MORE.
 - ALL PAVEMENTS TO BE REMOVED SHALL BE SAWED TO A NEAT LINE, MINIMUM 1-1/2" DEEP, AND THE PAVEMENT REMOVED IN SUCH A MANNER AS TO PRESERVE THE EXISTING TRANSVERSE REINFORCING STEEL TO THE MAXIMUM EXTENT POSSIBLE.
 - ALL CURBS AND CUTTERS SHALL BE INTEGRAL WITH THE PAVEMENT AND HAVE THE SAME COMPRESSIVE STRENGTH.
 - PAVEMENT REINFORCEMENT SHALL BE #3 BARS, SPACED AT 18" CENTER TO CENTER EACH WAY EXCEPT WHERE NOTED IN THE PLANS.
 - BAR LAPS SHALL BE 30 DIAMETERS IN LENGTH.
 - ALL STRIPES SHALL BE 4" WIDE, UNLESS OTHERWISE NOTED.
 - INSTALLATION AND PLACEMENT OF IRRIGATION SLEEVES AND UTILITY CONDUITS SHALL BE IN ACCORDANCE WITH LANDSCAPE ARCHITECTS AND MEP PLANS.
 - SIDEWALKS AND ACCESSIBLE ROUTES SHALL HAVE A SLOPE NO GREATER THAN 5% AND A CROSS FALL NO GREATER THAN 2% UNLESS NOTED OTHERWISE.



THE SEAL APPEARING ON THIS DOCUMENT WAS AUTHORIZED BY LOGAN H. McWHORTER, P.E. 102254 ON 09/20/2009. ALTERATION OF A SEALED DOCUMENT WITHOUT PROPER NOTIFICATION TO THE RESPONSIBLE ENGINEER IS AN OFFENSE UNDER THE TEXAS ENGINEERING PRACTICE ACT.

NO.	DATE	REVISION
Pacheco Koch Consulting Engineers 8350 N. CENTRAL EXPWY, SUITE 1000 TX REG. ENGINEERING FIRM F-469 DALLAS, TX 75208 972.235.3031 TX REG. SURVEYING FIRM LS-100080-00		
PAVING PLAN & DETAILS LOOS SWIMMING POOL MECHANICAL YARD ADDITION 3815 SPRING VALLEY ROAD TOWN OF ADDISON, DALLAS COUNTY, TEXAS		
DESIGN	DRAWN	DATE
LHM	JHB	AUG 2009
SCALE	NOTES	FILE
1"=40'		C2.1

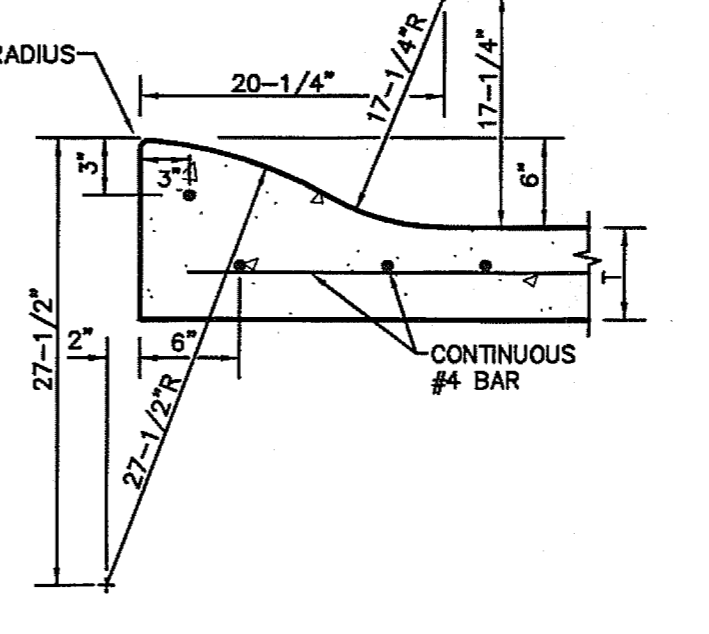
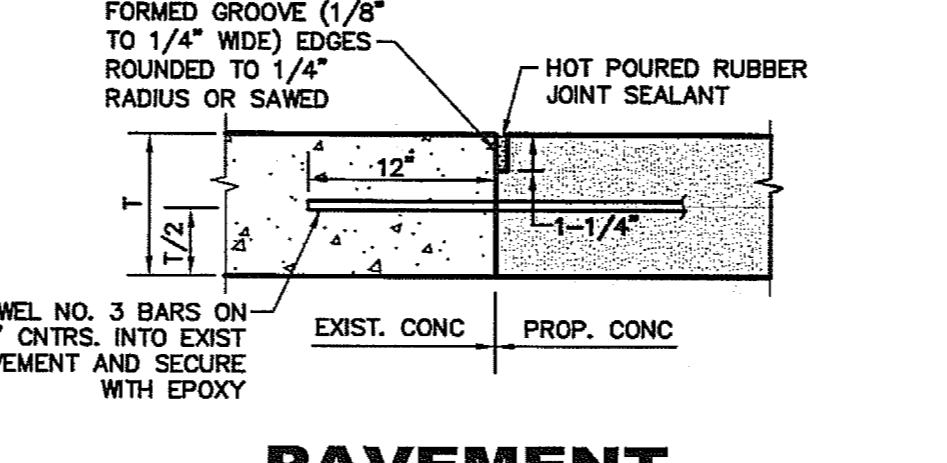
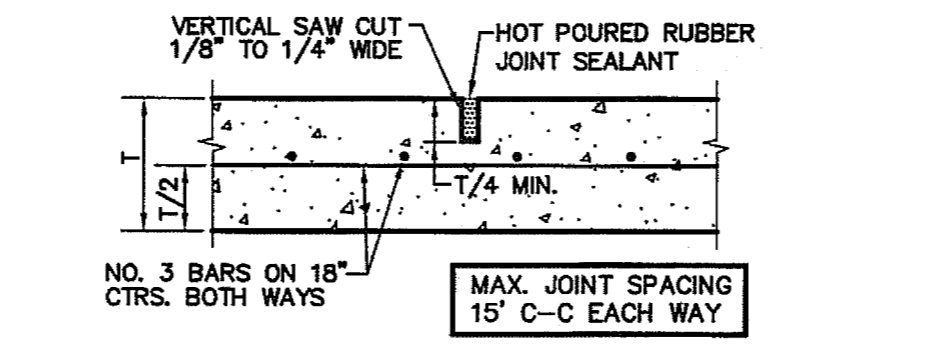
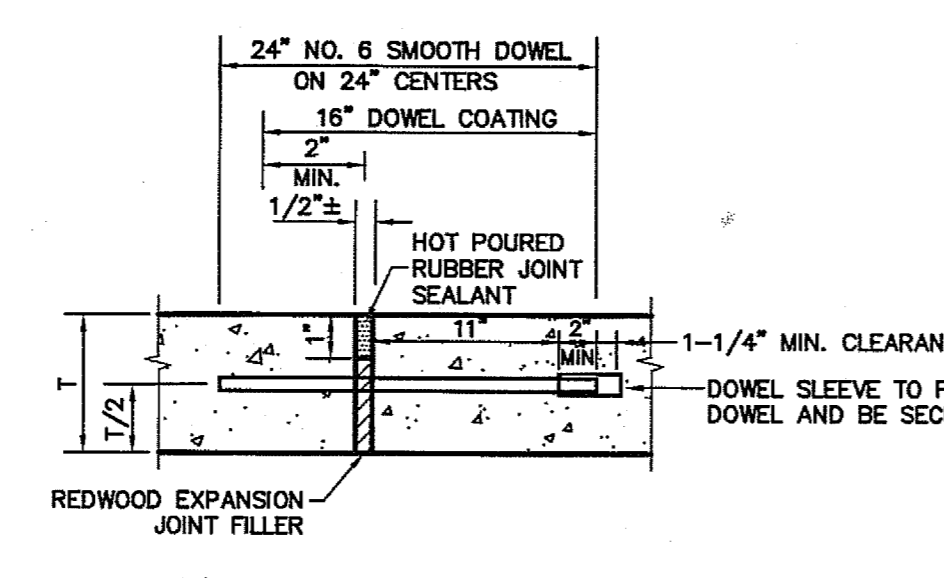
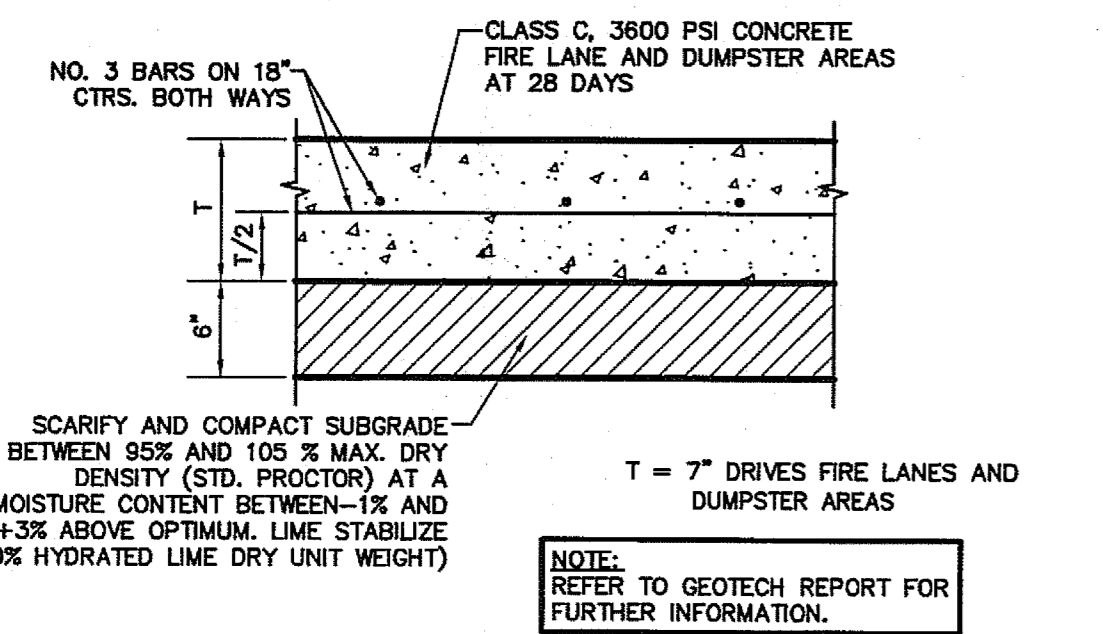
PK FILE: 1170-09.082
 DWG FILE: 1170-09-082P.DWG
 XREF FILE: 1170-09-082A.DWG
 XREF FILE: PK-ST.DWG
 XREF FILE: 1170-09-082R.DWG
 XREF FILE: PK-UT.DWG
 XREF FILE: 1170-09-082S1.DWG



GENERAL NOTE:
 A. STRIPING TO BE DONE IN ACCORDANCE WITH CITY STANDARDS.

STRIPING DETAIL NOTE:
 A. PAINT:
 1. STRIPE SHALL BE FIVE (5) INCHES WIDE PAINTED WITH AN EXTERIOR ACRYLIC LATEX PAINT.
 2. COLOR SHALL BE "TRAFFIC RED" GUDDEN NO. 63251 OR EQUAL.
 3. LETTERS SHALL BE FOUR (4) INCHES HIGH PAINTED WITH AN EXTERIOR ACRYLIC LATEX PAINT.
 B. COLOR SHALL BE "TRAFFIC WHITE" GUDDEN NO. 563245 OR EQUAL.

B. APPLICATION:
 1. STRIPE MAY BE BRUSHED OR SPRAYED, ONE COAT TO FINISH.
 2. LETTERS SHALL BE STENCIL FORMED, BRUSH APPLIED AND SPACED AS DETAILED ON THIS SHEET.



JBR/LLAS
 11/17/09
 11/17/09-082P.DWG
 11/17/09-082P.DWG