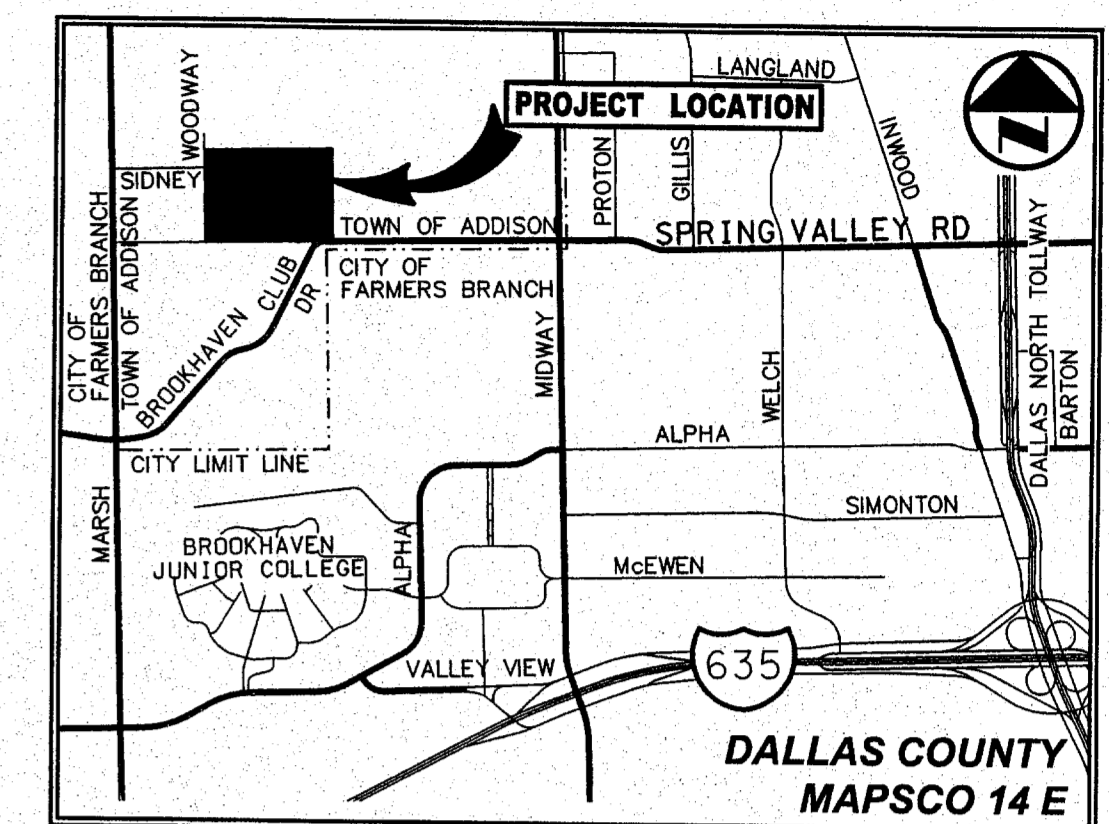
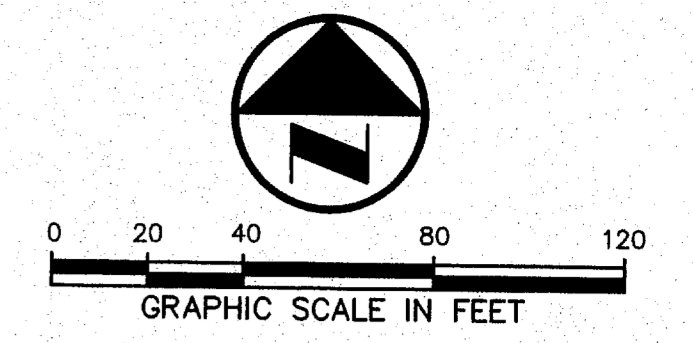


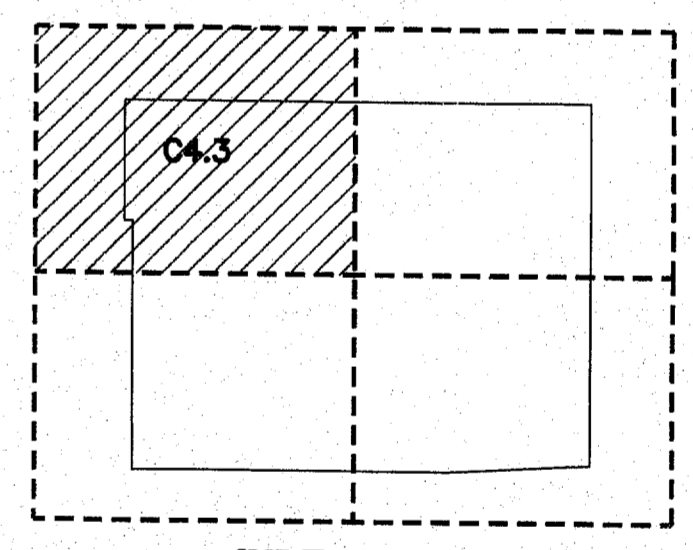
BLOCK A
GRAND ADDISON II
(VOL. 93063, PG. 3374)



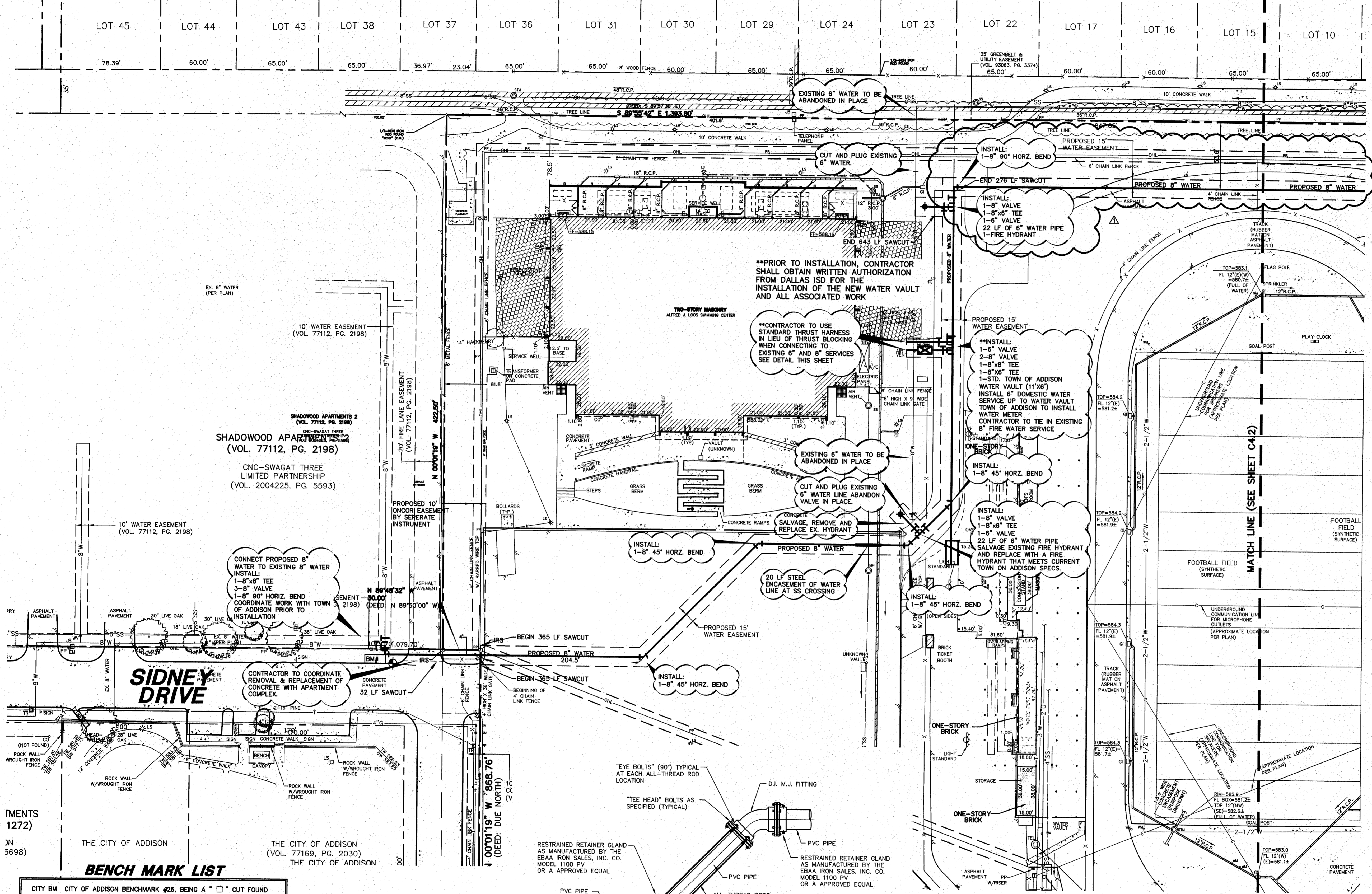
VICINITY MAP
(NOT TO SCALE)

LEGEND

- AC A/C UNIT
- B BOLLARD
- CC CLEANOUT
- FD FIRE DEPT. CONN.
- FI FIRE HYDRANT
- GM GAS METER
- GV GAS VALVE
- GUY ANCHOR
- ICV IRRIGATION CONTROL VALVE
- JL JUNCTION BOX
- LS LIGHT STANDARD
- M MANHOLE (TYPE UNKNOWN)
- PH PAY PHONE
- PLM UG PIPELINE MARKER
- PM PARKING METER
- PP POWER POLE
- PP W/ GUY ANCHOR
- PS SAN. SEWER MANHOLE
- SS STORM DRAIN LINE
- SS SANITARY SEWER LINE
- S13 EXIST CONTOUR
- MW MONITORING WELL
- (C.M.) CONTROLLING MONUMENT
- PFC POINT FOR CORNER
- TRANSFORMER VAULT
- TD TELEPHONE BOX
- TL UG TELEPHONE MARKER
- TR TRASH CAN
- TS1 TRAFFIC SIGNAL
- TS2 TRAFFIC SIGNAL CONTROL
- TSP TRAFFIC SIGNAL POLE
- TS TRAFFIC SENSOR
- STM STORM SEWER MANHOLE
- TE TELEPHONE MANHOLE
- TR TELEPHONE RISER
- WM WATER METER
- WV WATER VALVE
- PROPERTY LINE
- EASEMENT LINE
- SETBACK LINE
- FENCE
- OVERHEAD UTILITY LINE
- UNDERGROUND ELECTRIC LINE
- UNDERGROUND TELEPHONE LINE
- UNDERGROUND CABLE LINE
- UNDERGROUND GAS LINE
- 612.39 EXIST SPOT ELEV.
- 612.39 EXIST TOP OF CURB ELEV.
- 611.92 EXIST GUTTER ELEV.
- 611.92 EXIST TOP OF WALL ELEV.
- 611.92 EXIST BOTTOM OF WALL ELEV.
- 1/2" IRON ROD
- W/PACHCO KOCH' CAP SET

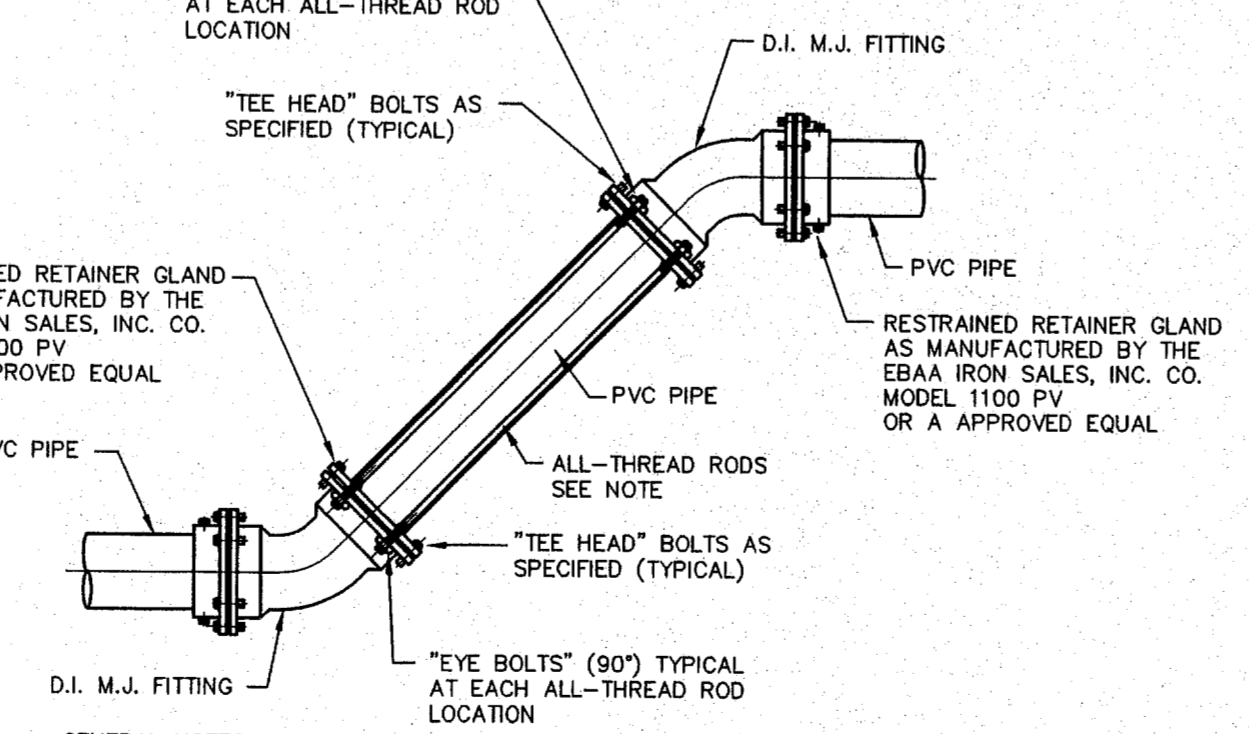


INDEX MAP
(NOT TO SCALE)



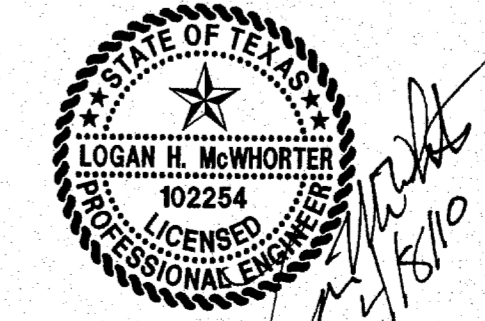
BENCH MARK LIST

CITY BM	DESCRIPTION	ELEVATION
	CITY OF ADDISON BENCHMARK #26, BEING A "X" CUT FOUND ON THE NOSE OF A MEDIAN AT BROOKHAVEN CLUB DRIVE, 25'± SOUTH OF SPRING VALLEY ROAD.	ELEV=584.57
BM # 1	"X" CUT SET ON THE NORTHWEST CORNER OF A Y-INLET ON THE NORTH SIDE OF SPRING VALLEY ROAD, 9'± WEST OF THE SOUTHEAST CORNER OF THE SITE.	ELEV=585.61
BM # 2	"X" CUT SET ON THE SOUTHWEST CORNER OF THE CONCRETE BASE OF A LIGHT STANDARD, 238'± SOUTH OF THE NORTH PROPERTY LINE AND 40'± WEST OF THE EAST PROPERTY LINE.	ELEV=582.06
BM # 3	"X" CUT SET ON THE NORTH CURB OF SIDNEY DRIVE, NEAR THE NORTHWEST CORNER OF THE INTERSECTION OF SIDNEY DRIVE AND WOODWAY DRIVE.	ELEV=583.14
BM # 4	"X" CUT SET ON AN INLET BOX ON THE SOUTH SIDE OF SPRING VALLEY ROAD, 220'± EAST OF WOODWAY DRIVE.	



**STANDARD THRUST HARNESS
DETAIL HORIZONTAL AND/
OR VERTICAL OFFSETS**

1 NOT TO SCALE



THE SEAL APPEARING ON THIS DOCUMENT WAS AUTHORIZED BY LOGAN H. McWHORTER, P.E. 102254 ON 04/29/2010. ALTERATION OF A SEALED DOCUMENT WITHOUT PROPER NOTIFICATION TO THE RESPONSIBLE ENGINEER IS AN OFFENSE UNDER THE TEXAS ENGINEERING PRACTICE ACT.

NO.	DATE	REVISION
1	04/29/2010	REVISED WATER LAYOUT

Pacheco Koch Consulting Engineers
8350 N. CENTRAL EXPWY. SUITE 1000 DALLAS, TX 75206 TX REG. ENGINEERING FIRM F-469 972.235.3031 TX REG. SURVEYING FIRM LS-100080-00

WATER PLAN

GEORGE H.W. BUSH ELEM SCHOOL
DALLAS INDEPENDENT SCHOOL DISTRICT
10.000 ACRES
TOWN OF ADDISON, DALLAS COUNTY, TEXAS

DESIGN	DRAWN	DATE	SCALE	NOTES	FILE	NO.
LHM	KLH	MAR 2010	1"=40'			C4.3